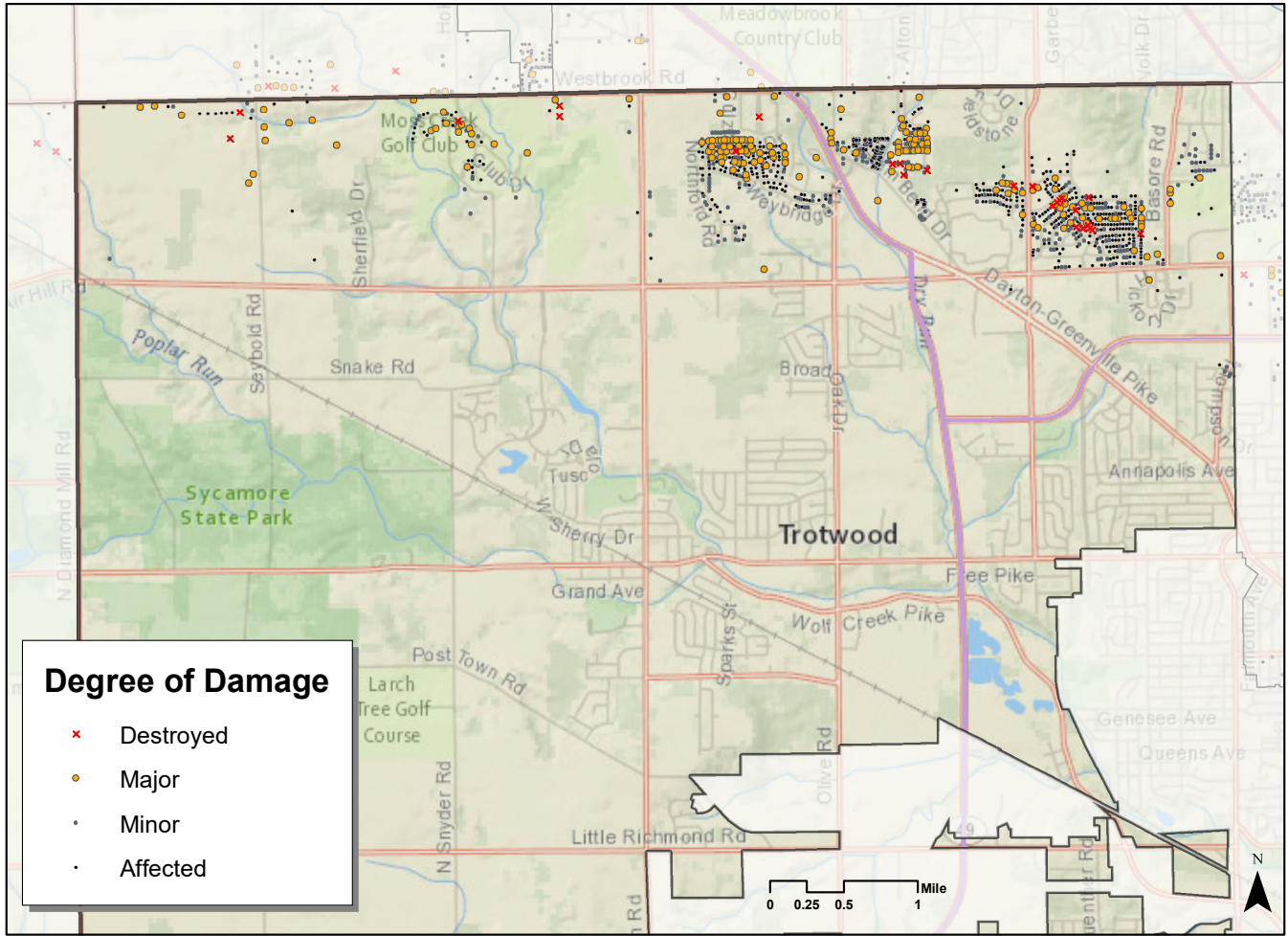
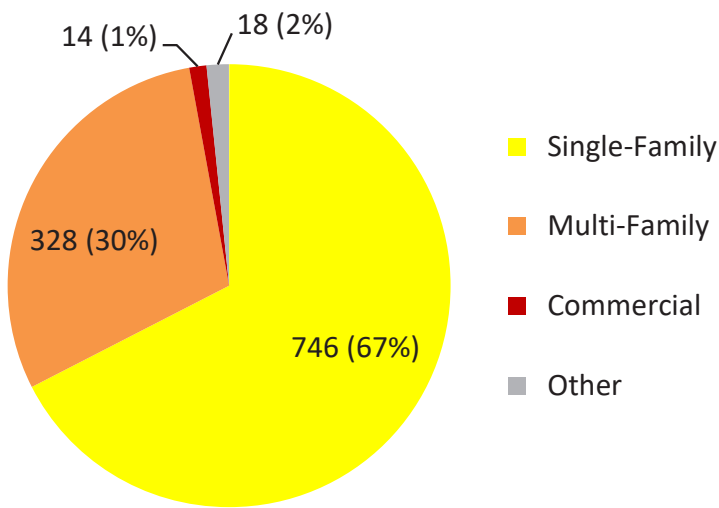


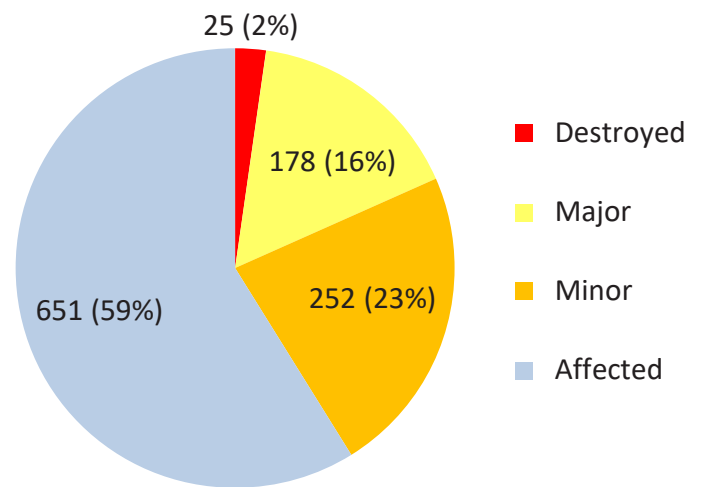
# Trotwood Tornado Damage Assessment



## Affected Land Uses



## Types of Damage



	Destroyed	Major	Minor	Affected
<b>Single Family</b>	22 (88.0%)	148 (83.1%)	202 (80.2%)	374 (57.5%)
<b>Multi Family</b>	2 (8.0%)	18 (8.1%)	45 (17.9%)	263 (40.4%)
<b>Commercial</b>	0 (0.0%)	5 (2.5%)	2 (0.8%)	7 (1.1%)
<b>Industrial</b>	0 (0.0%)	0 (0.0%)	0 (0.0%)	0 (0.0%)
<b>Other</b>	1 (4.0%)	7 (3.9%)	3 (1.2%)	7 (1.1%)
<b>Total</b>	25 (100.0%)	178 (100.0%)	252 (100.0%)	651 (100.0%)

Date Produced: 11/12/2019  
 Montgomery County Auditor  
 Produced by MVRPC