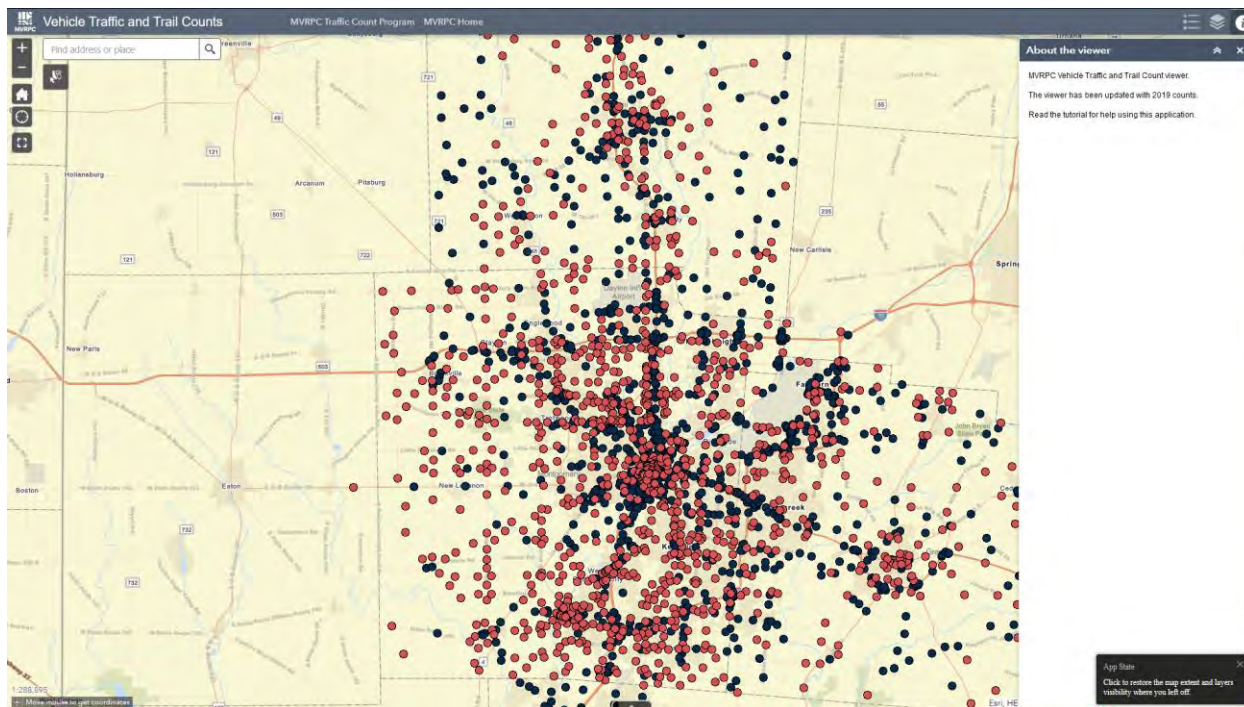


## Traffic Count Viewer Tutorial

### Introduction

When the viewer first loads, the map will open with all traffic count locations in the database.



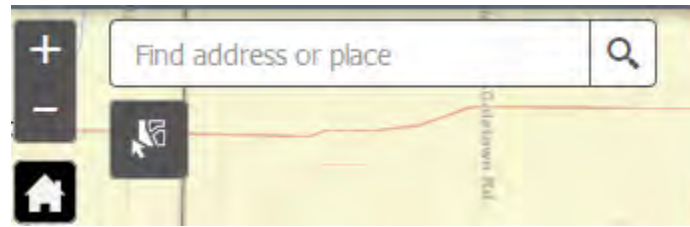
### View Attribute Table

To access the attribute table, click on the *triangle* at the bottom of the viewer. Once clicked, the Program Counts table will open with a second tab available to select Non Program Counts.

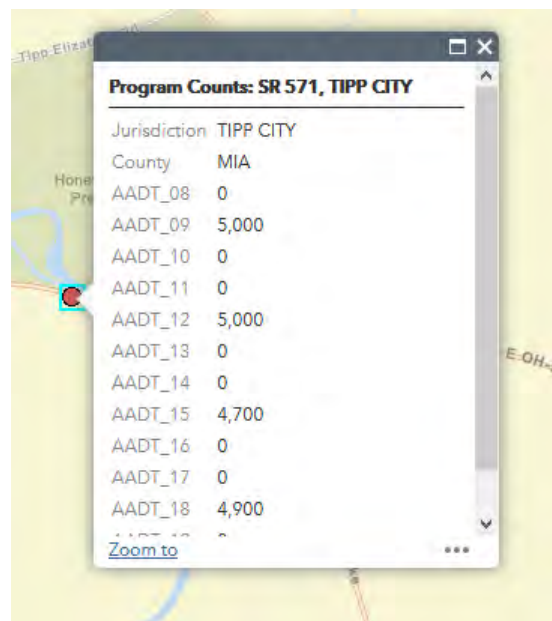
Road Name	Jurisdiction	County	AADT_08	AADT_09	AADT_10	AADT_11	AADT_12	AADT_13	AADT_14	AADT_15	AADT_16	AADT_17	AADT_18	AADT_19
GERMANTOWN - MIDDLETOWN PK	GERMAN TWP	MOT	1,400	0	0	0	0	500	700	0	0	700	0	700
SR 4	GERMAN TWP	MOT	5,300	0	0	0	0	5,300	0	0	5,100	0	0	5,700
CARLISLE PK	GERMAN TWP	MOT	4,700	0	0	0	4,600	0	0	0	5,500	0	0	5,300
CHAUTAQUA RD	CARLISLE	MOT	0	2,400	0	0	2,100	2,400	0	2,300	0	0	2,200	3,300
DAYTON - LEBANON PK	WASHINGTON TWP	MOT	0	11,400	0	0	0	12,700	0	0	14,100	0	0	15,300
BROWNS RUN RD	GERMAN TWP	MOT	100	300	0	0	0	250	100	0	0	100	0	250

### Select by Single Location

View any count location in the database by *panning and zooming* or using the *zoom in (+) and zoom out (-) tool* to a location. Alternatively, search for a specific address or intersection in the *Geo-locator bar*.



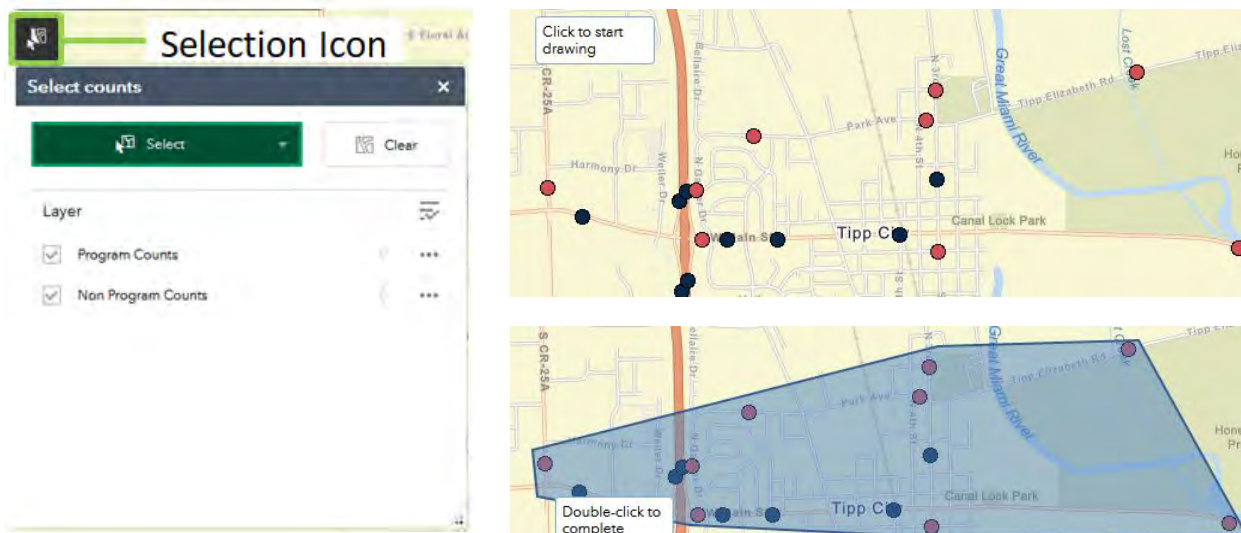
Click on a single count location, and a popup table will open for the location.

A screenshot of a popup table titled "Program Counts: SR 571, TIPP CITY". The table lists various data points for different years and categories. The background shows a map with a red location marker.

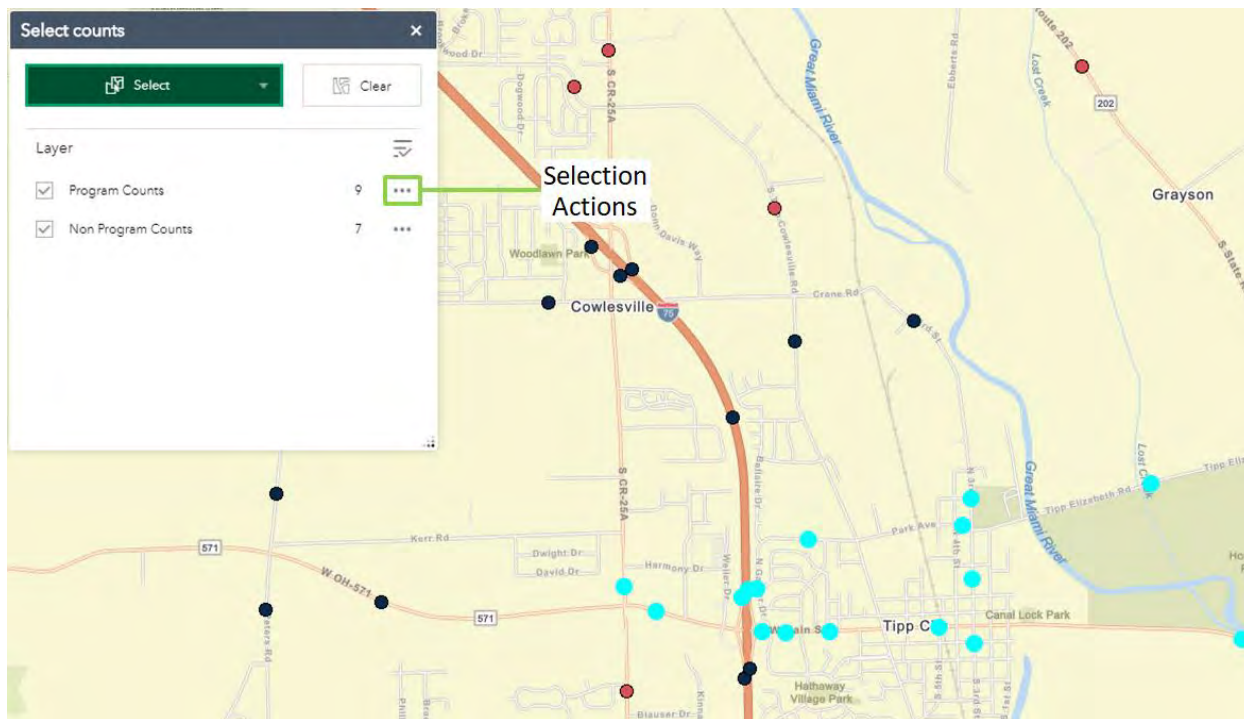
Program Counts: SR 571, TIPP CITY	
Jurisdiction	TIPP CITY
County	MIA
AADT_08	0
AADT_09	5,000
AADT_10	0
AADT_11	0
AADT_12	5,000
AADT_13	0
AADT_14	0
AADT_15	4,700
AADT_16	0
AADT_17	0
AADT_18	4,900
AADT_19	0
<a href="#">Zoom to</a>	

### Select Multiple Locations by Area

Counts can be selected by area by clicking on the *selection icon*. Once the icon is clicked, counts can be selected by drawing a rectangle, polygon, or circle. If selecting by rectangle or circle, click and hold on the starting point and then release to finish the desired area. If selecting by polygon, click on the map to start drawing. Once the desired area is drawn, double click to complete the polygon.

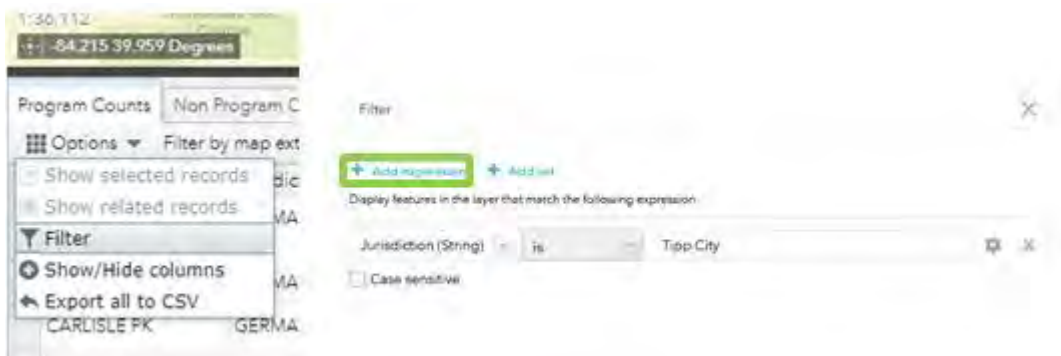


The counts within the drawn shape will then be highlighted. To download the selected counts, click on *Selection Actions* then *Export to CSV file*.

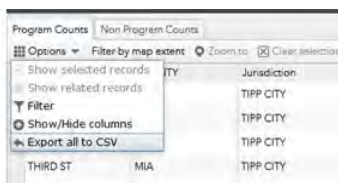


### Select Multiple Location by Filter

Open the attribute table at the bottom of the viewer. In either the Program Counts and/or Non Program Counts attribute table, click on *Options* and select *Filter*. Click on *Add expression* to start filtering, and then click on the first dropdown box to select attribute, for example: Jurisdiction. Once *Add expression* is selected, type in a jurisdiction and then click *OK*. Multiple expressions can be filtered if desired. Counts will be highlighted in the attribute table after through the completed filter. Only locations valid in the filter will be displayed on the map and table.



The counts selected can be exported to CSV by clicking on *Options* and selecting *Export selected to CSV*. The viewer will ask to Export data to CSV file and click *OK*.



*Note: Filtering and exporting functions need to be performed separately for Program and Non Program counts.*

### Export to CSV

Once exported, the X and Y points will be inserted at the last two columns of the CSV and can be used to geocode the counts.

	A	B	C	D	E	F	G	H	I	J	K	L	M	N	O	P	Q	R
1	FID	RD_NAME	Jurisdiction	COUNTY	AADT_08	AADT_09	AADT_10	AADT_11	AADT_12	AADT_13	AADT_14	AADT_15	AADT_16	AADT_17	AADT_18	AADT_19	x	y
2	1053	PETERS RE	TIPP CITY	MIA	0	0	1800	0	1800	1600	0	0	2000	0	0	0	-9375477	4864234
3	1062	THIRD ST	TIPP CITY	MIA	0	0	0	3500	2200	0	0	0	0	0	0	0	-9369933	4861441
4	1063	PARK AVE	TIPP CITY	MIA	0	0	0	1800	1500	0	0	0	0	0	0	0	-9370004	4861199
5	1067	THIRD ST	TIPP CITY	MIA	0	0	0	1300	1300	0	0	0	0	0	0	0	-9369906	4860152
6	1068	MAIN ST	TIPP CITY	MIA	0	22800	0	0	0	0	0	21600	0	0	21000	0	-9371795	4860250
7	1069	GARBER D	TIPP CITY	MIA	3500	0	0	3000	4400	0	0	0	0	0	0	0	-9371839	4860640
8	1075	HYATTSVII	TIPP CITY	MIA	0	0	0	3300	3500	0	0	0	0	0	0	0	-9370127	4858203
9	1077	TIPP - COV	TIPP CITY	MIA	0	0	2700	0	0	2700	0	0	2200	0	0	0	-9369985	4857423
10	1130	COUNTY R	TIPP CITY	MIA	9900	0	9100	0	0	8900	0	0	0	7700	0	0	-9373006	4859724
11	1131	COUNTY R	TIPP CITY	MIA	0	11400	0	0	0	0	0	8700	0	0	9600	0	-9373028	4860658
12	1141	WESTEDG	TIPP CITY	MIA	2400	0	0	4000	2200	0	0	0	0	0	0	0	-9371379	4861072
13	1156	SR 571	TIPP CITY	MIA	0	5000	0	0	5000	0	0	4700	0	0	4900	0	-9367515	4860188