



MIAMI VALLEY

Regional Planning Commission

Shaping Our Region's Future Together

Sustainability Roundtable:

Storm Water Management for Buildings and Grounds

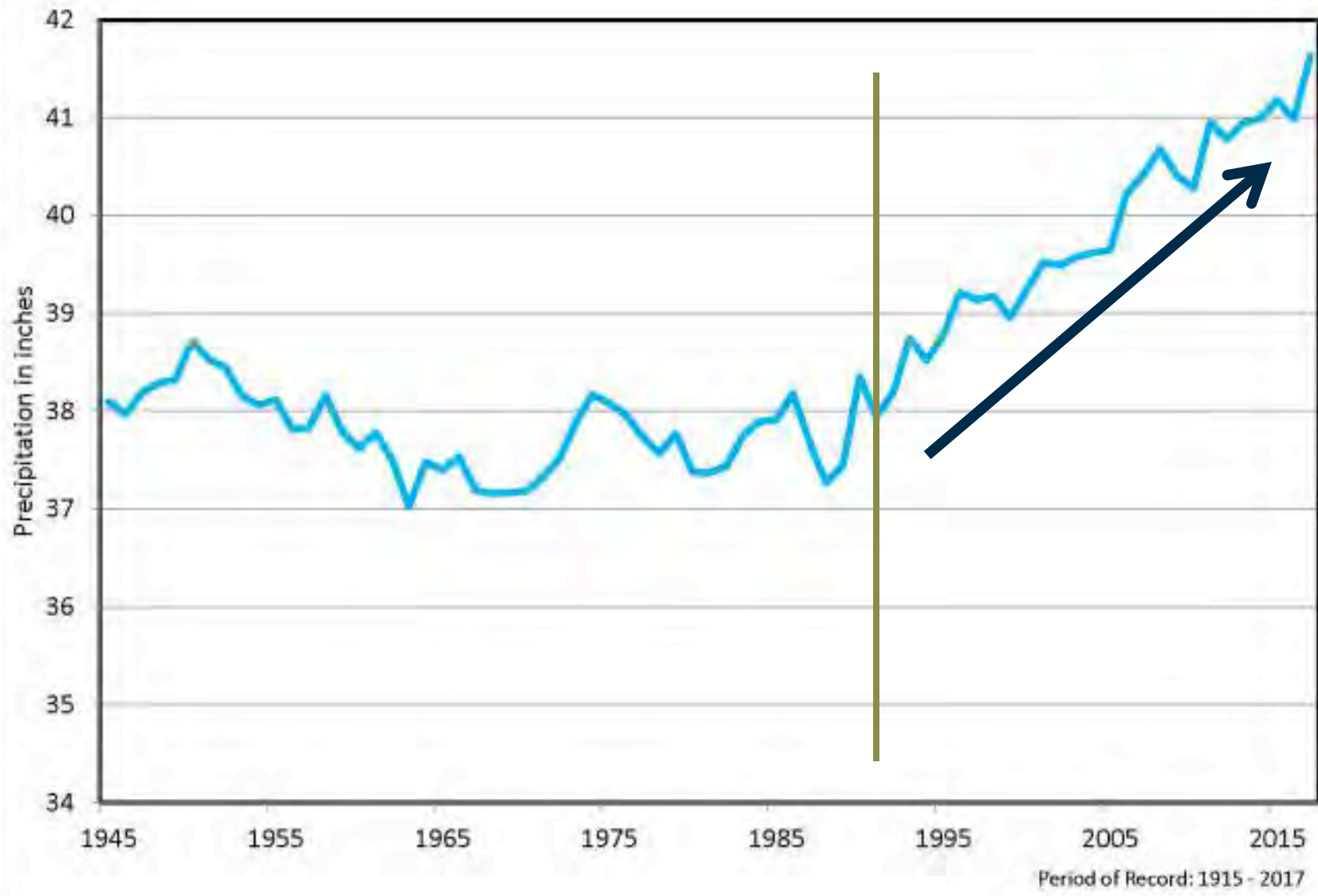
September 26, 2018

Precipitation Trends

The following chart shows the 30-year average annual precipitation in the Great Miami Watershed. Note the changes since the early 1990's.

[Data source: The Miami Conservancy District]

Precipitation: 30-Year Running Average



Source: MCD



MIAMI VALLEY

Regional Planning Commission

Shaping Our Region's Future Together

Sustainability Roundtable

Welcome!!

Please sign in.

September 26, 2018

Storm Water Impacts in the Miami Valley

Hillside slide closes road well into 2019

Buckled asphalt needs repair,
and earth below requires
stabilizing.

Dayton Daily News

September 6, 2018

Storm Water Impacts in the Miami Valley



Lower Miamisburg Road, Montgomery County.
Photo: Dayton Daily News

Storm Water Impacts in the Miami Valley

Miamisburg City Engineer Bob Stanley said the hillside terrain near the road's edge and **heavy spring rains** were contributing factors in causing the asphalt to buckle and separate - several inches in some cases.

“It’s a fairly significant failure as you can see from the drop in elevation,” Stanley said. “It’s mainly **the water, the saturation, the heavy rain.**”

Dayton Daily News

September 6, 2018



MIAMI VALLEY

Regional Planning Commission

Shaping Our Region's Future Together

Sustainability Roundtable

Welcome!!

Please sign in.

September 26, 2018

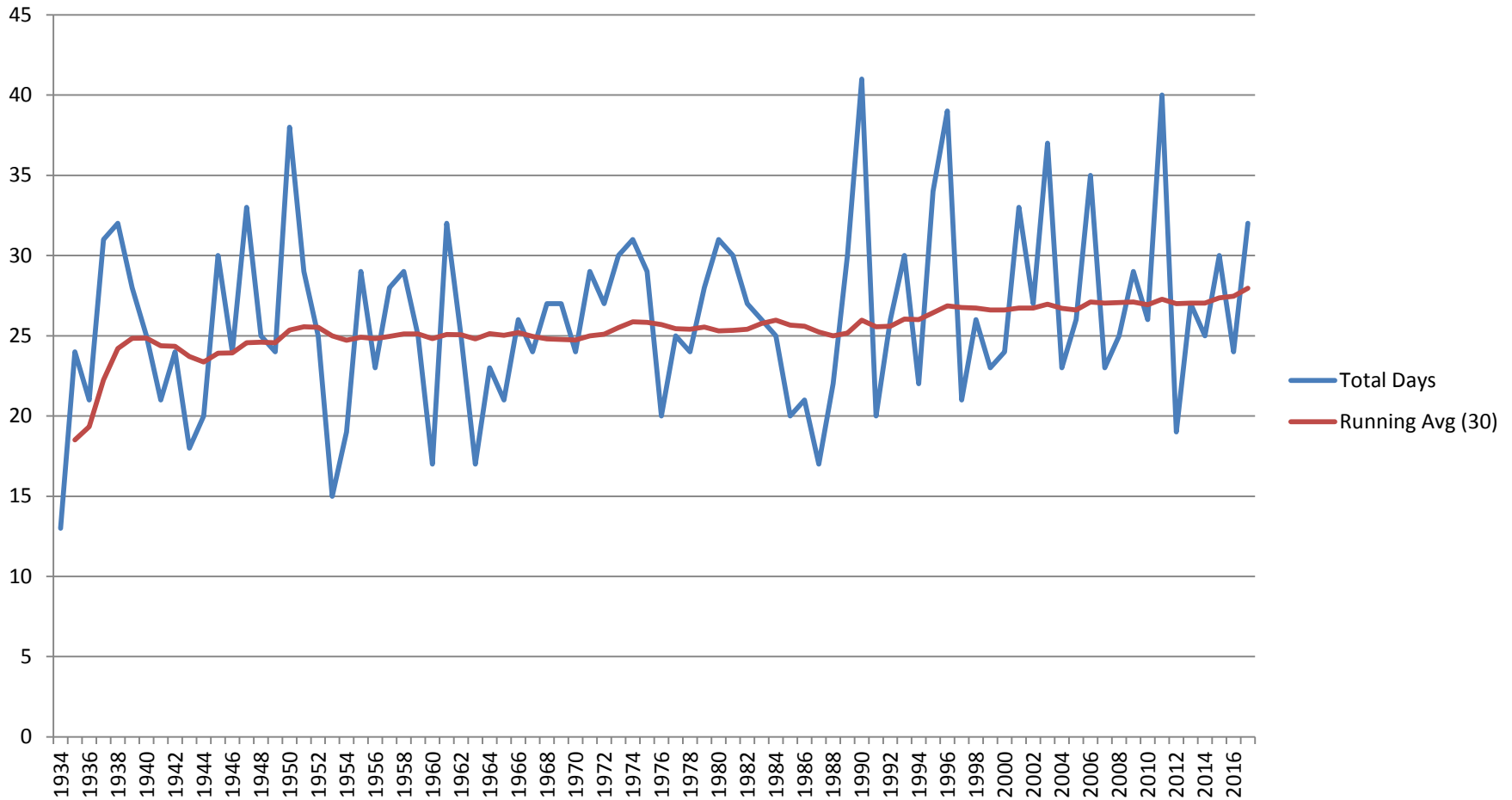
Precipitation Trends

The following chart shows the slight upward trend in the number of days per year with greater than a half inch of rain.

[Data source: The Miami Conservancy District]

More Days with >0.5" of Rain

Total Days with >.5" Precip, 1934 - 2017



Data Source: MCD



MIAMI VALLEY

Regional Planning Commission

Shaping Our Region's Future Together

Sustainability Roundtable

Welcome!!

**Coffee, Tea and Water
available.**

September 26, 2018

Storm Water Impacts in the Miami Valley

Mont. Co. to Realign Creek to Save Road

\$800K to stabilize Little Twin
Creek so it doesn't wash away
Manning Road.

Dayton Daily News

September 21, 2018

Storm Water Impacts in the Miami Valley



Manning Road, Montgomery County.
Photo: Dayton Daily News

Storm Water Impacts in the Miami Valley

“The work is necessary because **erosion — increasing due to large rain events** — left a 30-foot drop off just off the shoulder, compromising the integrity of the roadway, said Joseph Dura, senior engineer in the Montgomery County Engineer’s Office.”

“We weren’t anticipating doing this project in 2018, but here we are. **We don’t have a choice,**” Dura said.

Dayton Daily News

September 21, 2018