



**MIAMI VALLEY**

Regional Planning Commission

## Miami Valley Regional Resiliency Planning

Summary of the top identified critical infrastructure in region and most vulnerable affected populations.

# Critical Infrastructure Sectors

As part of the National Infrastructure Protection Plan drafted by the Department of Homeland Security, 16 sectors of critical infrastructure have been identified to aid state and local governments in building resilience.

- Chemical Sector
- Commercial Facilities Sector
- Communications Sector
- Critical Manufacturing Sector
- Dams Sector
- Defense Industrial Base Sector
- Emergency Services Sector
- Energy Sector
- Financial Services Sector
- Food & Agriculture Sector
- Government Facilities Sector
- Healthcare & Public Health Sector
- Information Technology Sector
- Nuclear Reactor, Materials, & Waste Sector
- Transportation Systems Sector
- Water & Wastewater Sector

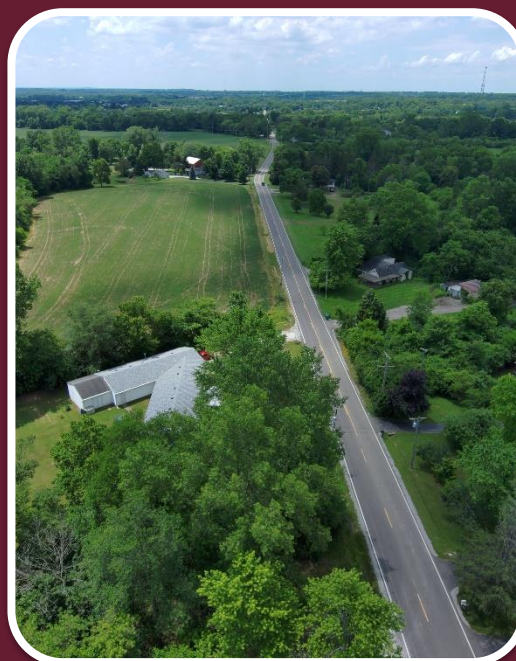
For more information on critical infrastructure systems please visit the [Cybersecurity & Infrastructure Security Agency](#).



# Top Ten Identified Critical Infrastructure Systems in Region



- Public Transit
- Schools/Universities
- Medical Facilities/Hospitals
- Food & Water Access
- Emergency Shelter



- Roads/Bridges
- Utilities
- 911 & Communication Services
- Sanitary Sewer/Waste Management
- Waterway Systems/Dams & Levies



# Most Vulnerable Populations in Region

- Older Adults
- Individuals with Disabilities
- Minorities
- Low Income Individuals
- School-aged Children
- Limited English Proficiency Persons

