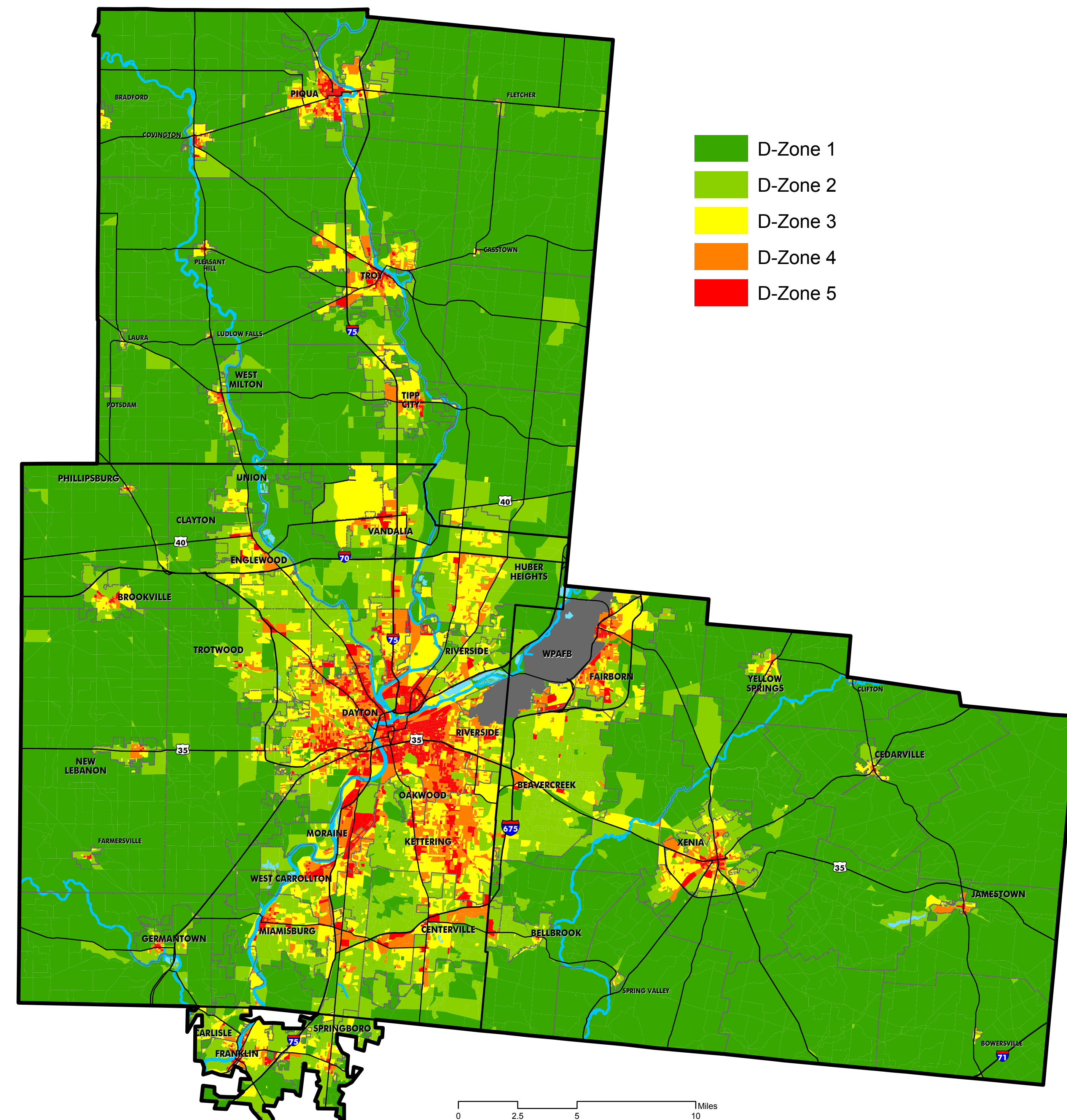


# 2007 TO 2040 – How Does THE PREFERRED SCENARIO CHANGE THE REGION?

## THE REGION IN 2007...

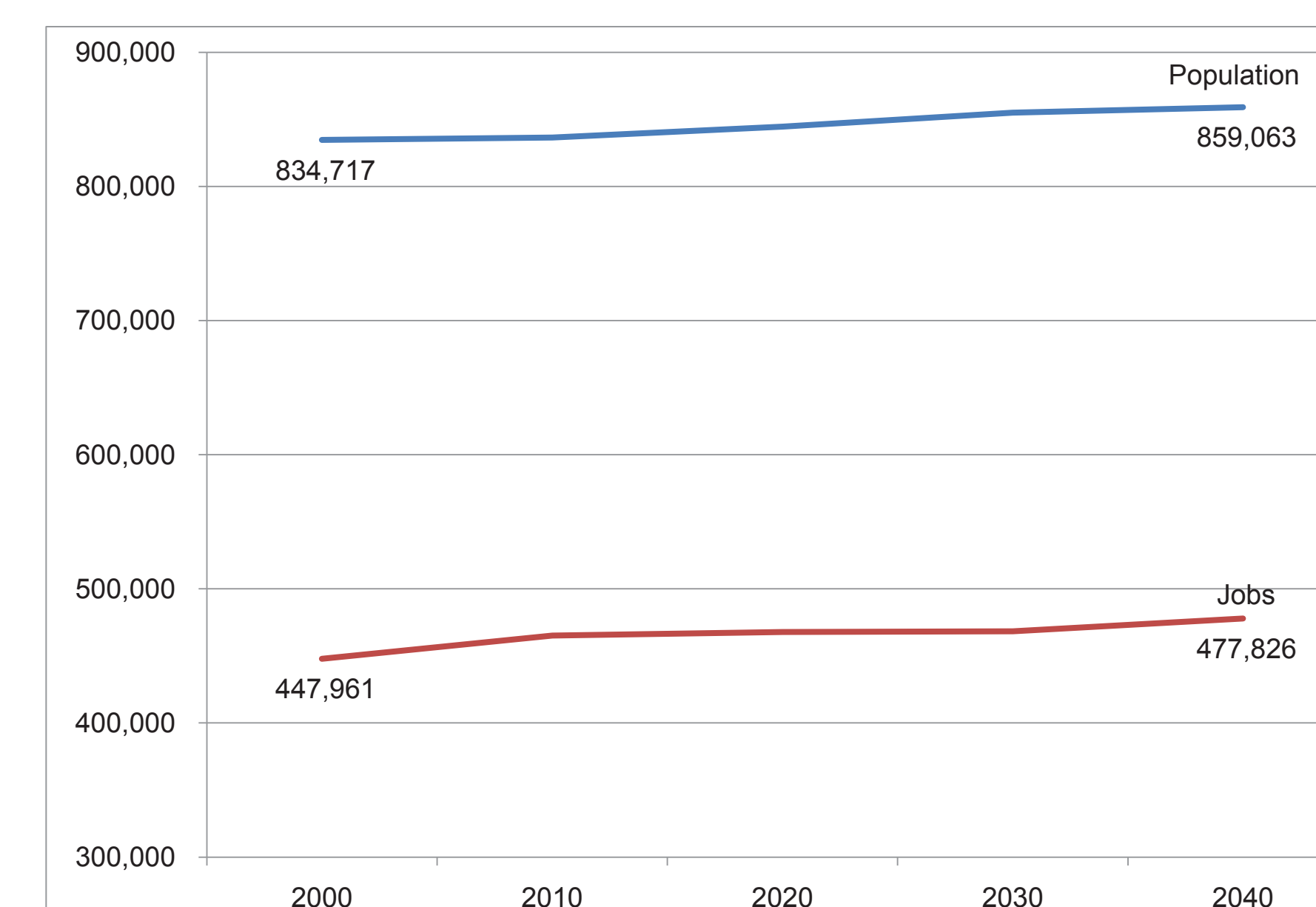


One way to look at the effect the Concentrated Development Scenario may have on the Region is to compare it to current development patterns. The map on the left shows development in the Region in 2007 according to the Density and Diversity Index.

The chart below shows the projected change by decade from 2000 to 2040 for population and jobs. Between 2000 and 2040:

- Population in the Region is expected to grow by 3% from 834,717 to 859,063,
- The number of jobs in the Region is expected to grow by 5% from 436,929 to 458,384, and
- The number of housing units in the Region is expected to grow by 1.2% from 358,383 to 362,924.

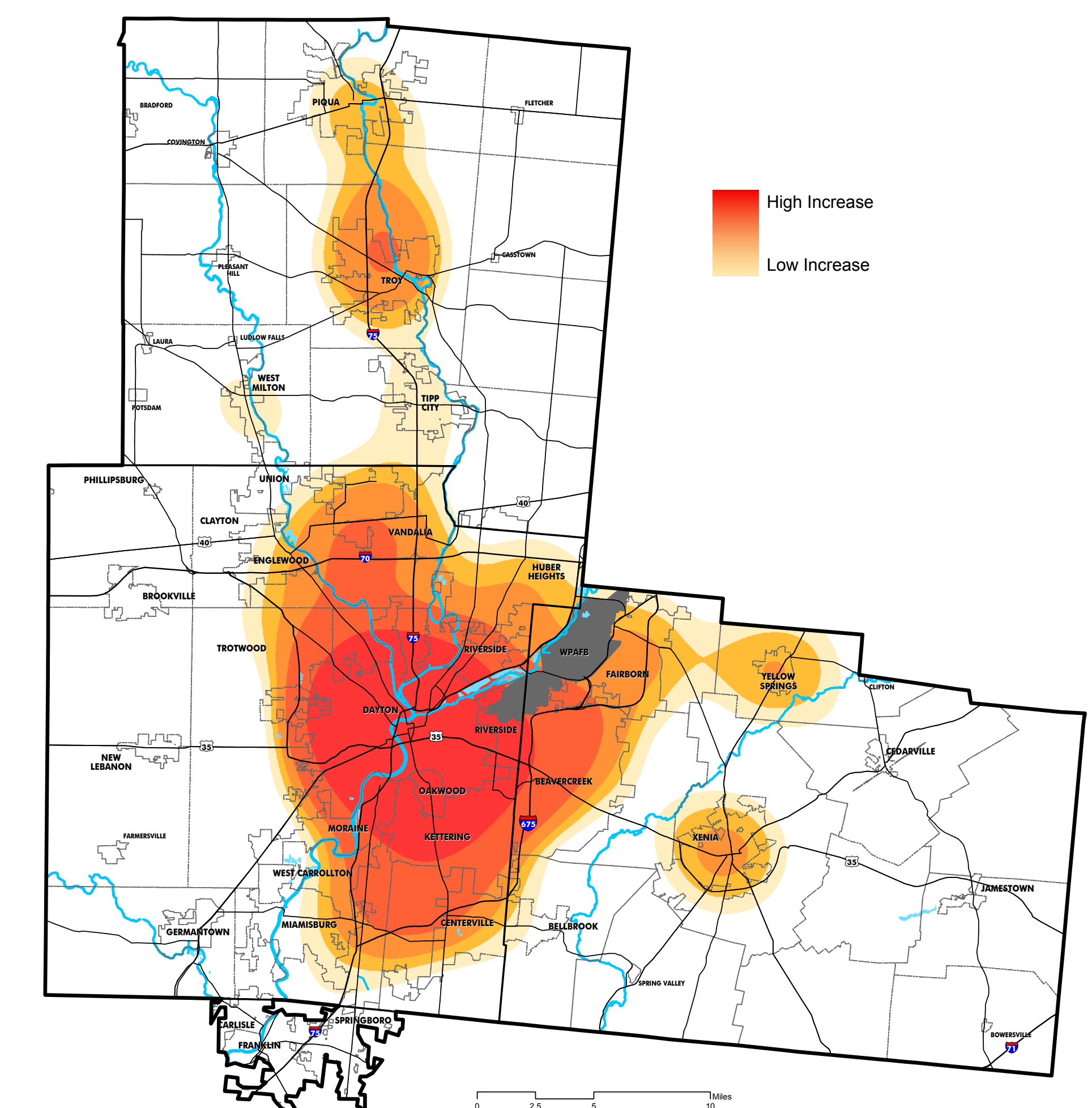
## POPULATION AND JOBS: 2000-2040



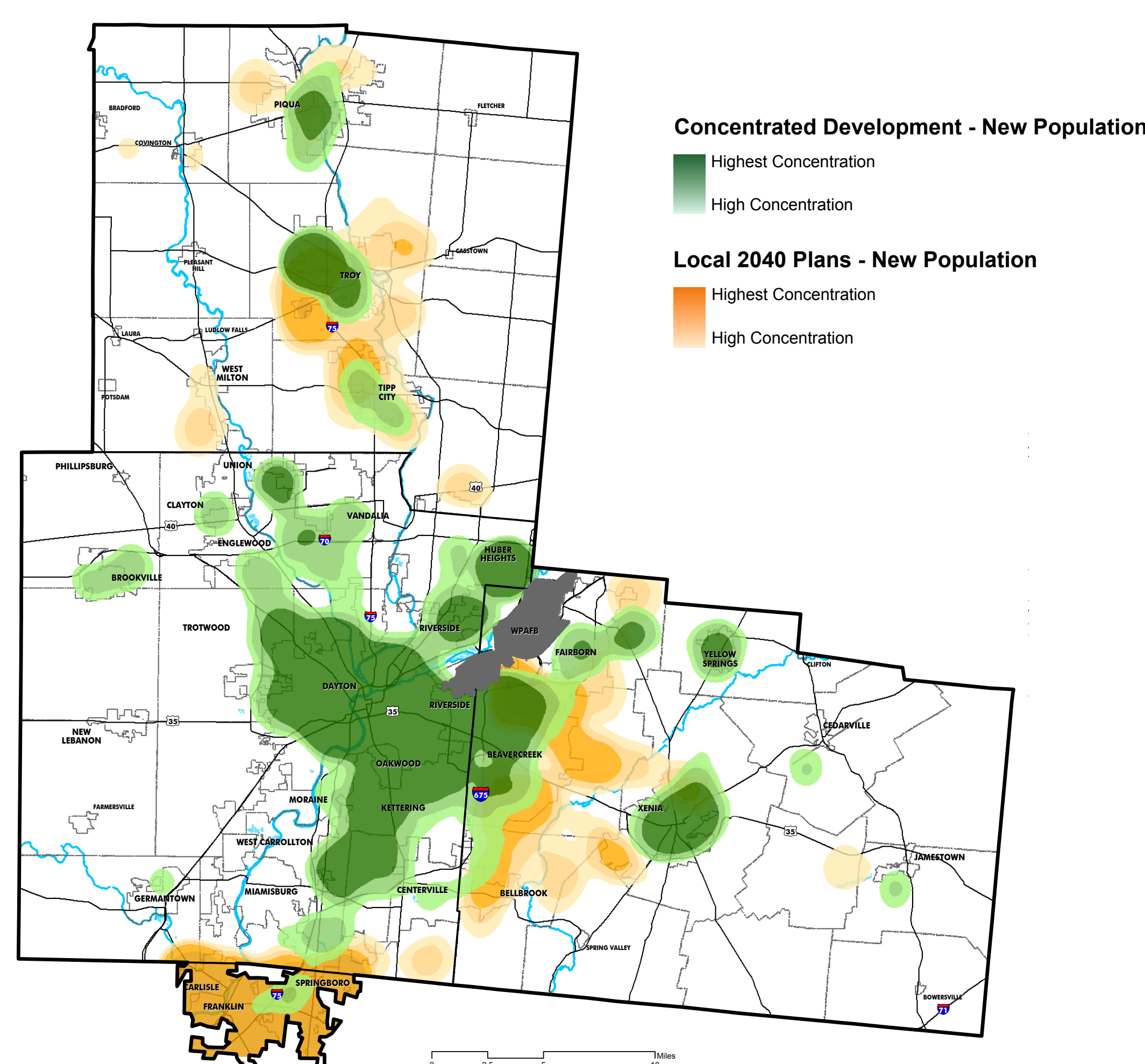
The map on the right shows how the distribution of these new people, jobs, and housing units would change if the Concentrated Development Scenario were to be implemented. The darker orange areas show where the highest increases in density and diversity of development would occur, while the white areas would remain largely unchanged.

The darker red and orange areas on the map show that the highest increases would occur in the Region's more urban areas, reflecting the goal of the Concentrated Development Scenario to concentrate new development around regional assets and in areas that already have the infrastructure in place to support it.

## CHANGE FROM 2007 TO 2040



## POPULATION CONCENTRATIONS



## LOCAL 2040 PLANS VS. THE CONCENTRATED DEVELOPMENT SCENARIO

Another way to look at the effect the Concentrated Development Scenario may have on the Region is to compare it to what is currently planned in the Region for 2040. MVRPC staff have compiled information from local comprehensive plans and through interviews with local planners and officials to determine what kind of development is foreseen for the year 2040. This information was used to determine where the highest concentrations of new population and employment might be located.

The map on the left compares the highest concentrations of new population in the Region, while the map on the right compares the highest concentrations of new employment. Overall, the Local 2040 Plans show concentrations occurring on the edges of the Region's urban areas and beyond. The Concentrated Development Scenario shows the highest concentrations of new population being centered mainly in and around the City of Dayton, in eastern Montgomery and western Greene counties, and in other larger cities scattered throughout the Region, such as the cities of Xenia and Troy.

This depiction of the Concentrated Development Scenario again reflects the goal of concentrating new development around regional assets and in areas that already have the infrastructure in place to support it.

## EMPLOYMENT CONCENTRATIONS

