

Planning for Resilience

w/ Pre-Disaster Recovery Planning



FEMA

Resilience

Community resilience is the ability of a community to prepare for anticipated hazards, adapt to changing conditions, and withstand and recover rapidly from disruptions. Activities such as disaster preparedness (which includes prevention, protection, mitigation, response, and recovery), and reducing community stressors (the underlying social, economic, and environmental conditions that can weaken a community) are key steps to resilience.



FEMA

Pre-Disaster Recovery Planning

PDRP is the pro-active process of anticipating future recovery issues, developing a scenario-based recovery plan, and building the capacity to improve recovery outcomes – all before a disaster happens... Critical information can be gathered; tools to assess needs and provide assistance can be analyzed and prepared, and roles and responsibilities can be defined. Additionally streamlined processes can be developed to expedite recovery efforts and partnerships established to leverage additional resources. These opportunities, and more, have helped governments make more effective use of the limited time in the aftermath of disasters.



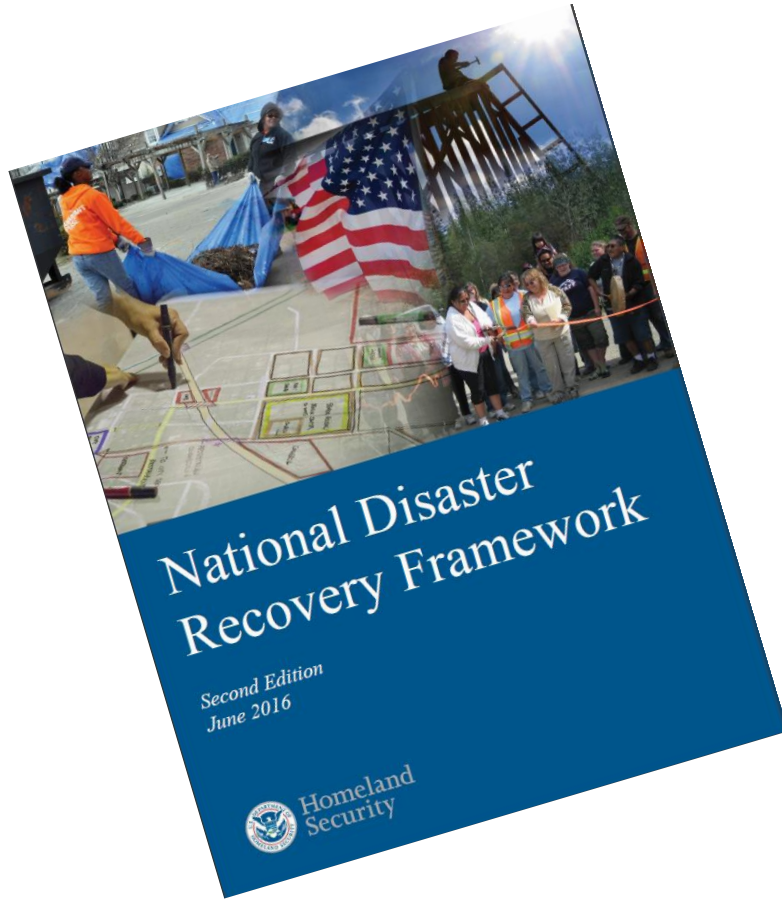
Importance of Recovery Planning

Recovery Planning creates an opportunity not only to survive and rebuild to pre-disaster condition, but also to transform and thrive.

- Identify opportunities
- Create partnerships
- Optimize resources



FEMA



National Disaster Recovery Framework

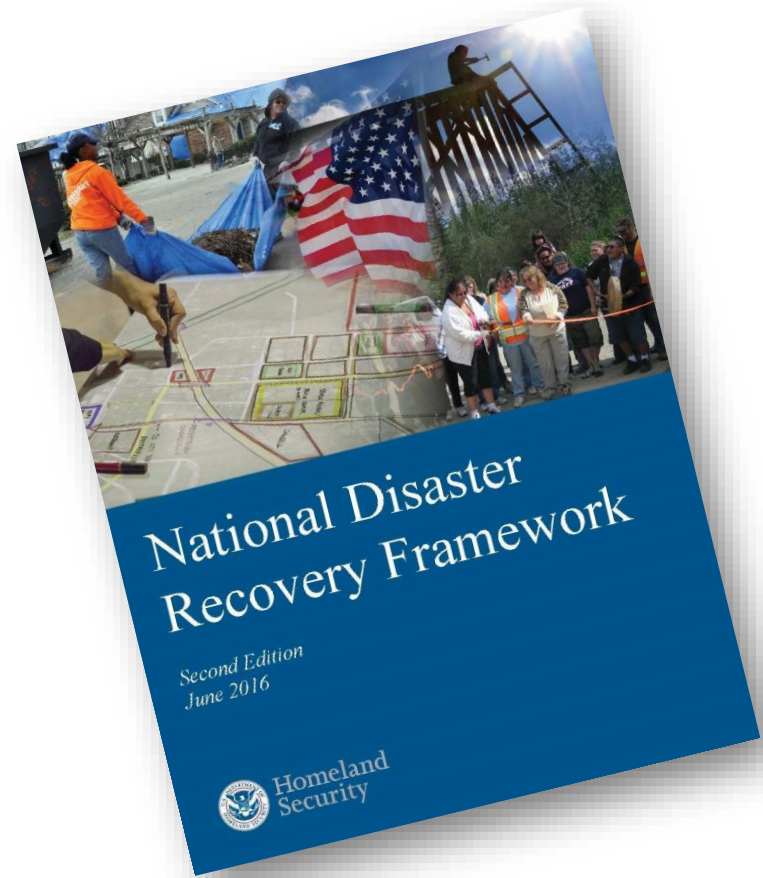


FEMA

National Disaster Recovery Framework (NDRF)

What is it?

- Serves as a roadmap for communities to conduct planning efforts before and after a disaster.
- Guidance to help recovery managers coordinate efforts in a unified and collaborative manner.
- Provides context for how the whole community works together to restore, redevelop, and revitalize the community following a disaster.



FEMA

NDRF Guiding Principles

- Individual and Family Empowerment
- Leadership and Local Primacy
- Pre-Disaster Recovery Planning
- Engaged Partnerships and Inclusiveness
- Unity of Effort
- Timeliness and Flexibility
- Resilience and Sustainability
- Psychological and Emotional Recovery



FEMA

Factors of a Successful Recovery



- Effective decision-making and coordination.
- Integration of community recovery planning processes.
- Well-managed recovery.
- Proactive community engagement, public participation and public awareness.
- Well-administered financial acquisition.
- Organizational flexibility.
- Resilient rebuilding.



FEMA

Organizational Structures for Interagency Recovery Coordination

The NDRF establishes the overarching interagency coordination structure to enhance recovery collaboration and coordination in support of disaster-impacted communities.



FEMA

The Six Recovery Support Functions (RSFs)

- Key federal coordination structure for functional areas of assistance.
- Brings together federal agencies, including those not traditionally associated with emergency response.
- Builds on the concept of Emergency Support Functions (ESFs)



FEMA



**US Army Corps
of Engineers®**



FEMA

RSFs are led by designated Federal coordinating agencies:

- Economic (Commerce...EDA)
- Health and Social Services (HHS)
- Housing (HUD)
- Infrastructure Systems (USACE)
- Natural and Cultural Resources (DOI)
- Community Planning and Capacity Building

Coordinating and Supporting Agencies

	<i>RSF</i>					
<i>Agency</i>	Community Planning and Capacity Building	Economic	Health and Social Services	Housing	Infrastructure	Natural and Cultural Resources
FEMA	Lead Agency/ Coordinating	Primary Area	Primary Area	Primary Area	Primary Area	Primary Area
Department of Commerce (EDA)	Supporting Agency	Lead Agency/ Coordinating		Supporting Agency	Supporting Agency	Supporting Agency
Department of Health and Human Services	Primary Area	Supporting Agency	Lead Agency/ Coordinating	Supporting Agency	Supporting Agency	
Department of Housing and Urban Development	Supporting Agency			Lead Agency/ Coordinating		
Army Corp of Engineers					Lead Agency/ Coordinating	Supporting Agency
Department of Interior	Supporting Agency	Supporting Agency	Primary Area		Supporting Agency	Lead Agency/ Coordinating
Department of Agriculture	Supporting Agency	Primary Area	Supporting Agency	Primary Area	Supporting Agency	Supporting Agency
Environmental Protection Agency	Supporting Agency	Supporting Agency	Primary Area	Supporting Agency	Supporting Agency	Primary Area
Corporation for National and Community Service	Supporting Agency	Supporting Agency	Primary Area	Supporting Agency		Supporting Agency
Department of the Treasury	Supporting Agency	Primary Area	Supporting Agency		Supporting Agency	
Small Business Administration	Supporting Agency	Primary Area	Supporting Agency	Supporting Agency		
Department of Education			Primary Area	Supporting Agency		Supporting Agency



FEMA

Federal Emergency Management Agency

Many Federal Recovery Partners



How could we be more resilient?

But what if.....

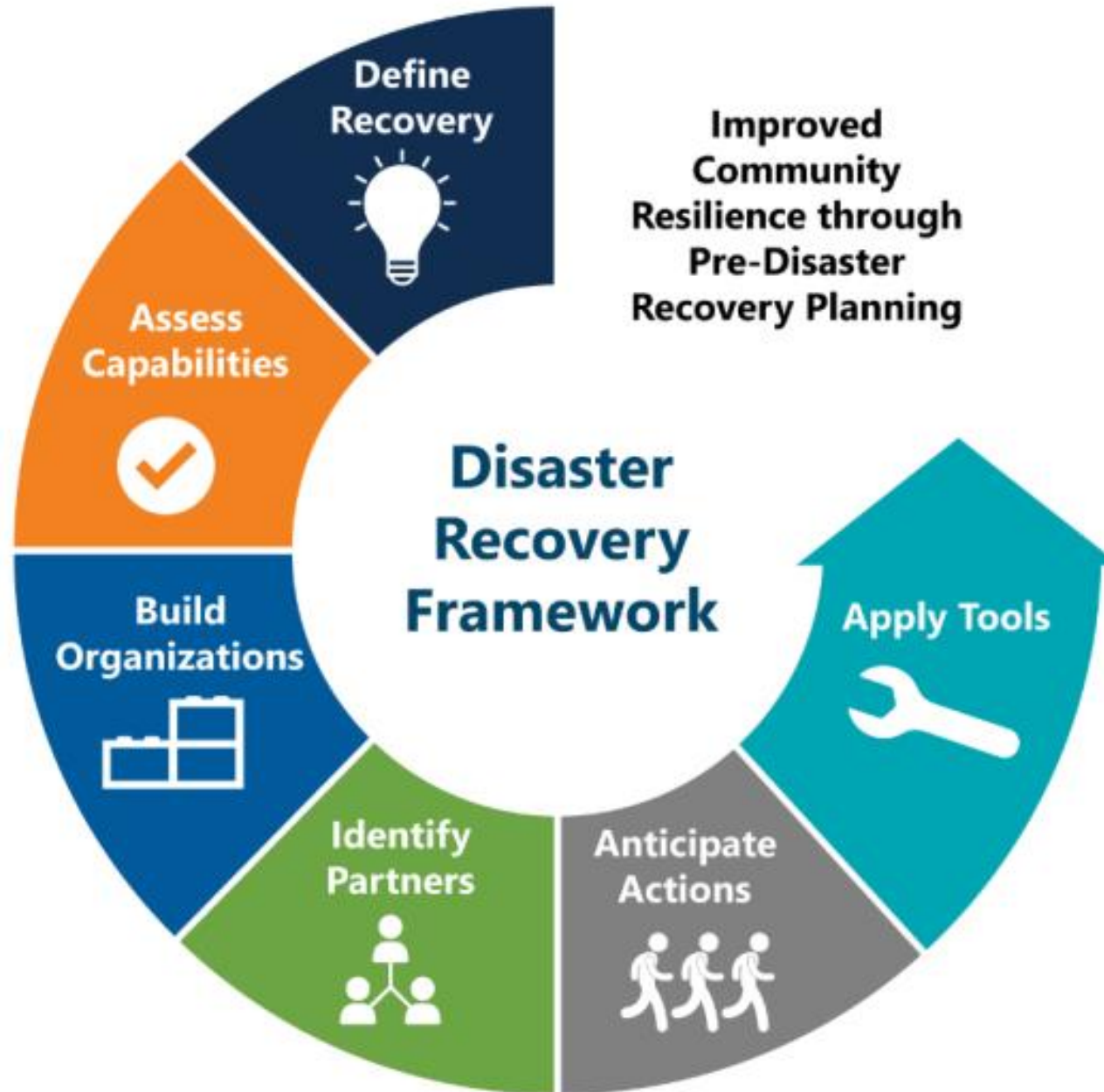
.....we had planned for
disaster(s) and were all ready
with a plan for recovery?

NDRF Guiding Principles

- Individual and Family Empowerment
- Leadership and Local Primacy
- **Pre-Disaster Recovery Planning**
- Engaged Partnerships and Inclusiveness
- Unity of Effort
- Timeliness and Flexibility
- Resilience and Sustainability
- Psychological and Emotional Recovery



FEMA



FEMA

Pre-Disaster Recovery Planning

This isn't the time to be making difficult decisions, nor is the time to figure out the who, the what, and the how of Recovery.

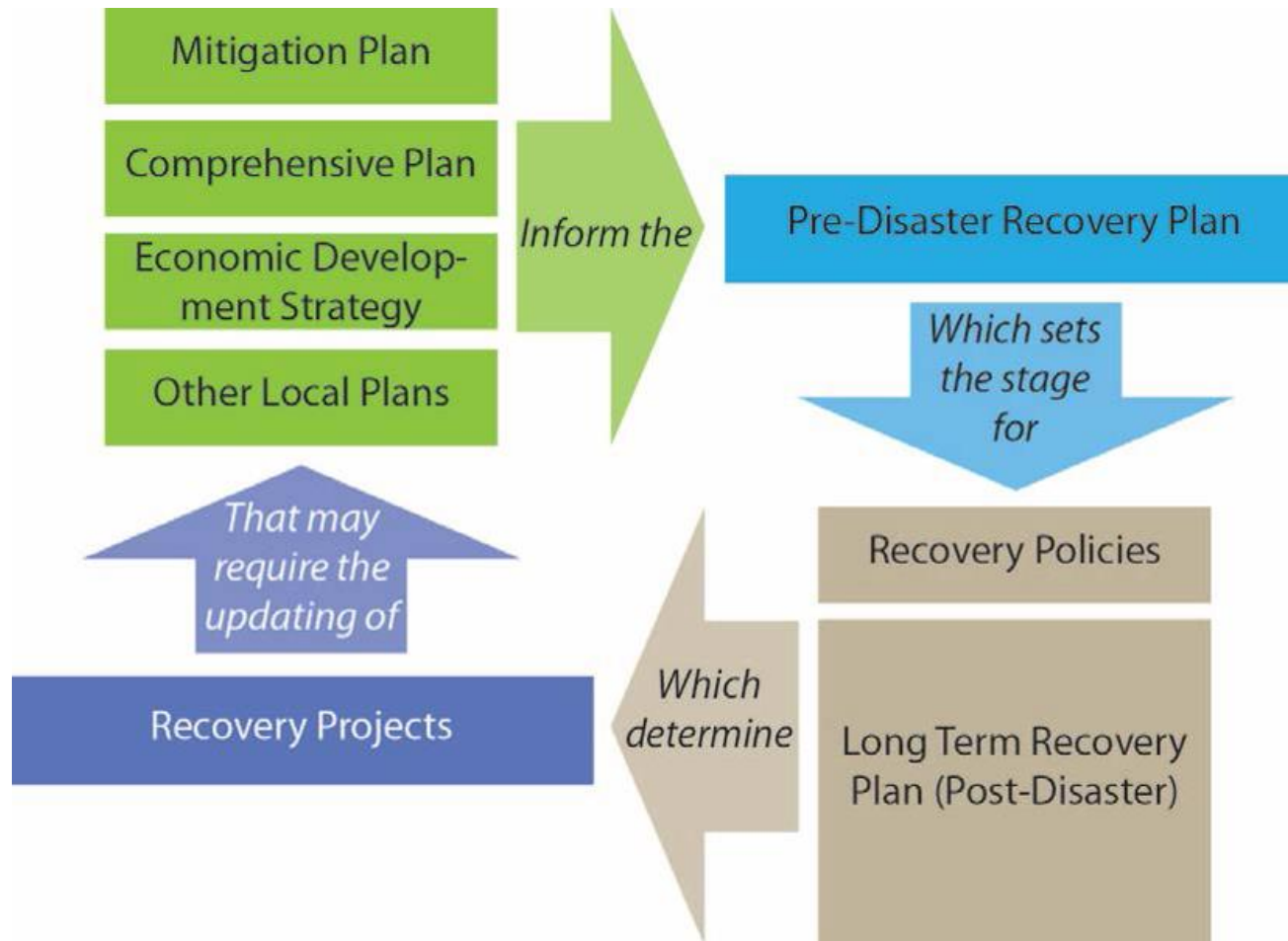


FEMA

Benefits of Pre-Disaster Recovery Planning

- Establish clear leadership roles pre- and post-disaster, allowing for smooth transition into recovery.
- Speed identification of needs and resources and ultimately reduce costs that result from ad hoc allocation of resources.
- Maximize opportunities to build resilience and risk reduction into all aspects of rebuilding and pro-actively confront recovery.
- Improve coordination between Local, State, and Federal resources.

Plan Integration



Pre-Disaster Recovery planning allows the opportunity for involved discussion, partnership development, and assuring that a city's, county's, or region's different plans work together. It can reduce confusion, speed organization, and promote better decision making.

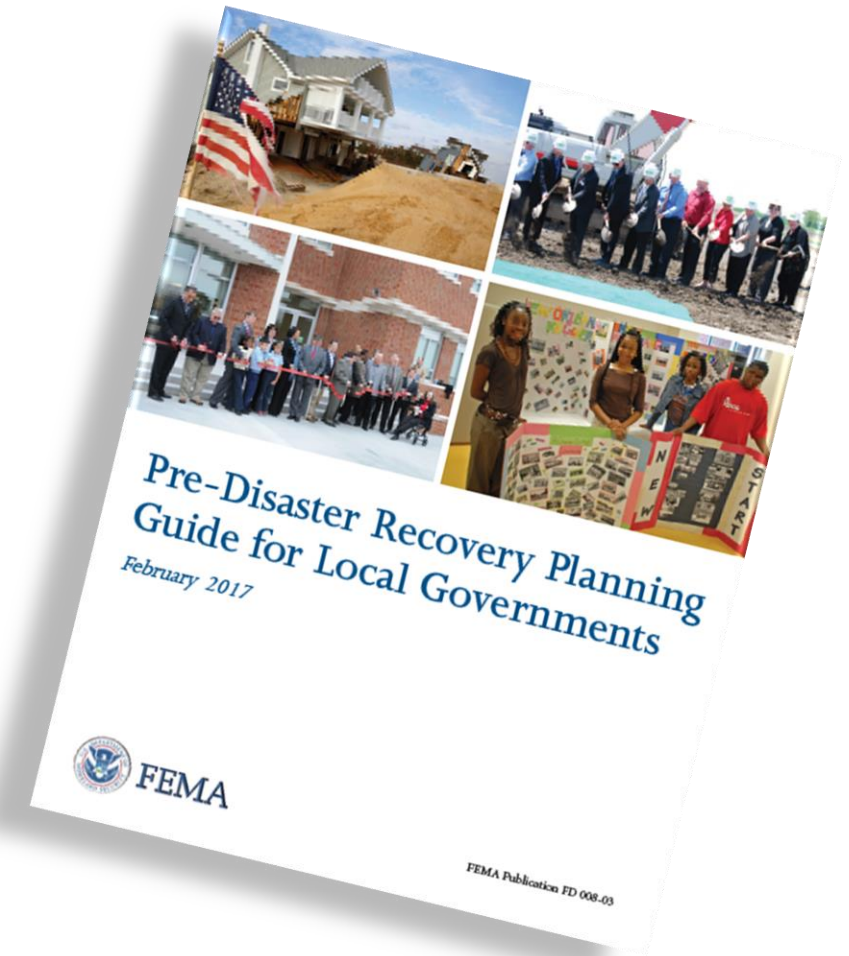


FEMA

Pre-Disaster Recovery Planning Guides

The *Pre-Disaster Recovery Planning Guide for Local Governments* outline steps and techniques directed towards local and state governments so that they can recover from disasters while engaging the whole community and smoothly transition into long-term recovery.

Builds on the recovery coordination principles and concepts outlined in the *National Disaster Recovery Framework*.



Step 1

Form a
Collaborative
Planning
Team

Identify Core
Planning
Team

Engage the
Whole
Community
in Planning

Step 2

Understand
the Situation

Identify
Threats and
Hazards

Assess Risk

Step 3

Determine
Goals and
Objectives

Determine
Operational
Milestones

Set Goals
and
Objectives

Step 4

Plan
Development

Develop and
Analyze
Course of
Action

Identify
Resources

Identify
Information &
Intelligence
Needs

Step 5

Plan
Preparation,
Review, and
Approval

Write the
Plan

Review the
Plan

Approve and
Disseminate
the Plan

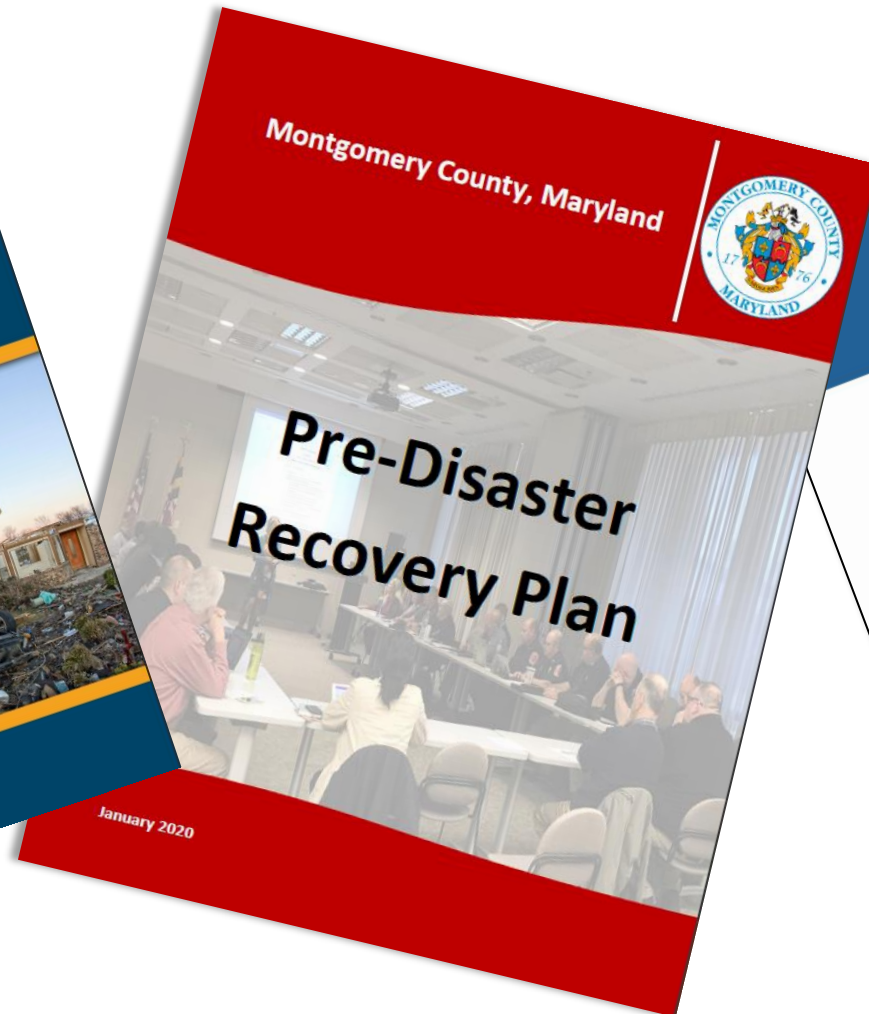
Step 6

Plan
Implementa-
tion and
Maintenance

Exercise the
Plan

Review,
Revise, and
Maintain the
Plan

A few examples of other plans



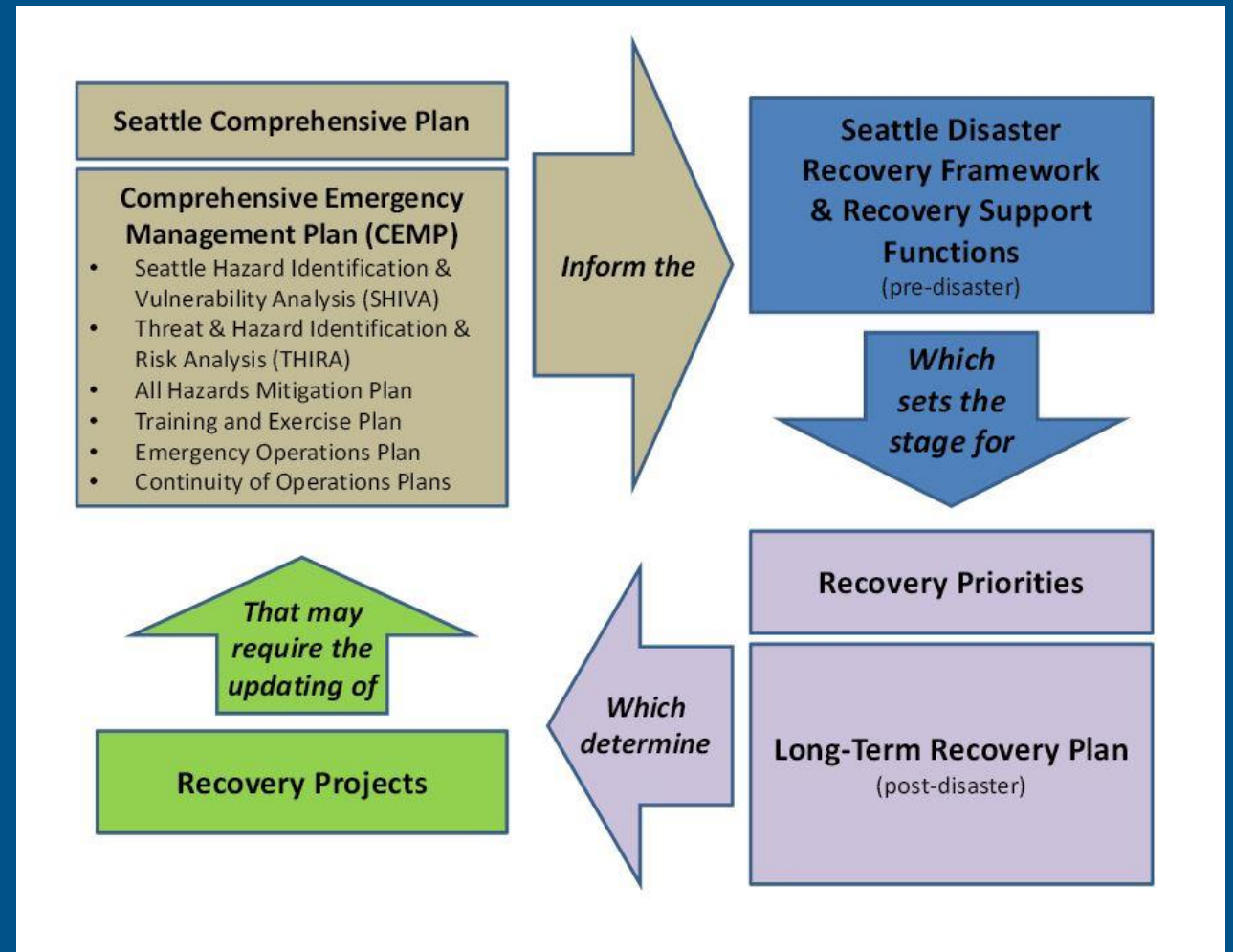
FEMA

Seattle's Plan

- Defining recovery
- Whole community approach
- "Rebuilding in ways that make Seattle more resilient to future disasters, more efficient and sustainable, and more in line with the community's values and vision for the future."
- Major roles, an org chart, criteria for choosing a recovery director and RSF co-chairs, an engagement strategy, and managing finances.



“Response to a disaster lasts until the fires are out, the survivors are rescued, and imminent danger is resolved. Recovery from a disaster often lasts months to years. This Disaster Recovery Framework was developed to address how the City would partner with the community and coordinate with County, State and Federal agencies in recovering from the effects of disaster using a massive earthquake as the premise.”

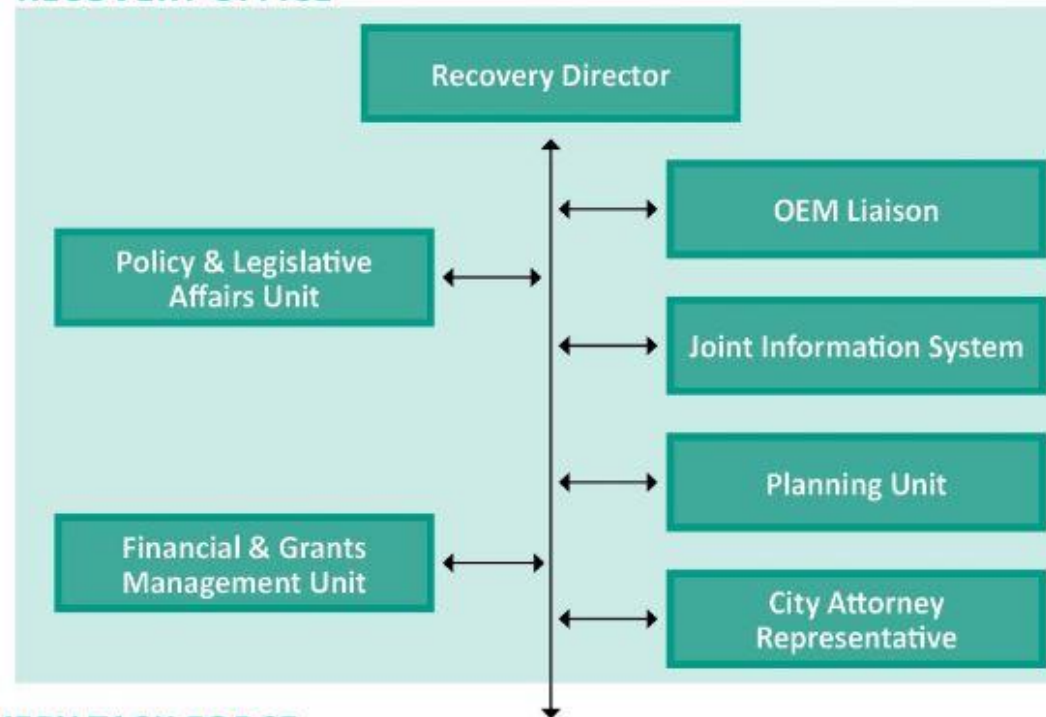
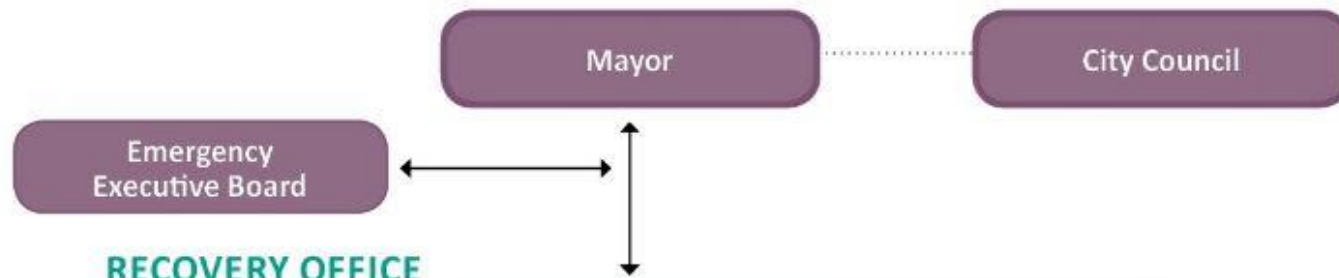



Seattle's Core Values

- Equity and diversity
- Civil rights and liberties
- Independence and individuality
- Participation and communication
- Neighborhood identity
- Environmental quality
- Economic vitality
- Mobility
- Resilience and sustainability
- Innovation

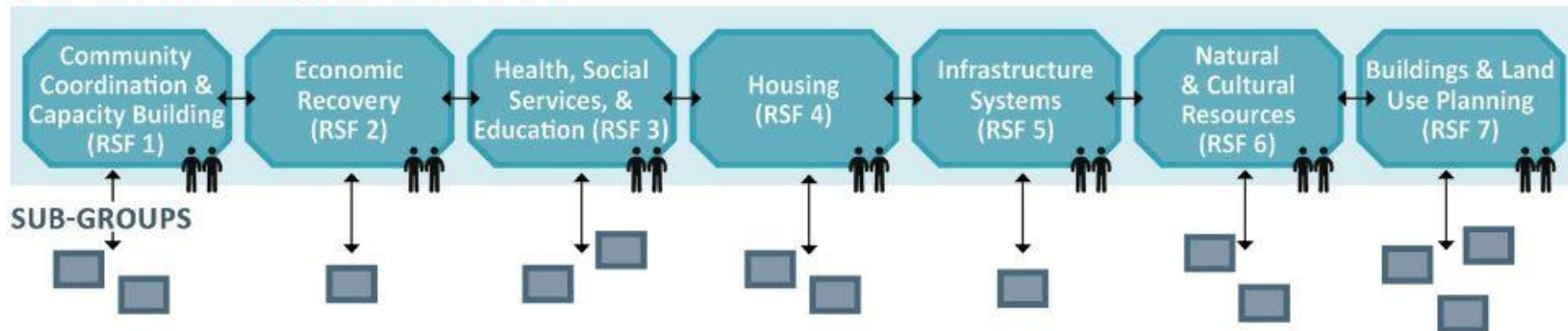
Seattle's 7 RSFs

1. Community Planning and Capacity Building
2. Economic Recovery
3. Health, Social Services, and Education
4. Housing
5. Infrastructure Systems
6. Natural and Cultural Resources
7. Buildings and Land Use Planning



 = Task Force Chairs
1 from City
1 from Community

COMMUNITY RECOVERY TASK FORCE



A few planning considerations

- What does resilience look like for the Miami Valley Region?
- What are your hazards, threats, and risks?
- What partners are missing, especially after the 2019 tornadoes?
- What are some of your guiding principles?
- What is critical for your recovery?
- What works for your communities?

Additional Recovery Complexities

- Integrating resilience and mitigation measures, addressing building codes, hazards, non-conforming uses
- Old or obsolete infrastructure, community facilities, need for reconfiguration or new infrastructure
- Changes in tax base
- Shift in county and local businesses
- Staffing and government operations: short- and long-term
- Community engagement, communications
- Application of mitigation plan and policies, comprehensive plan, economic development plan, school district plans, capital/facilities plans

MIAMI VALLEY LONG TERM DISASTER RECOVERY

The Miami Valley will build a comprehensive, coordinated long term disaster recovery system using the National Disaster Recovery Framework (NDRF) to serve all impacted counties. The NDRF provides guidance to enable recovery by defining recommended roles, responsibilities, coordination and planning among all jurisdictions. Based on decades of disaster response best practices, it focuses on how to restore, redevelop and revitalize the health, social, physical, economic, natural and environmental fabric of community and build resiliency for the future.

LONG TERM INDIVIDUAL DISASTER RECOVERY NETWORK (Chair, Vice-Chair, Secretary, Fiscal Sponsor)			MIAMI VALLEY DISASTER RECOVERY LEADERSHIP BOARD	LONG TERM COMMUNITY DISASTER RECOVERY NETWORK Miami Valley Regional Planning Commission-Brian O. Martin, Executive Director		
Recovery Director, Individual and Household – Laura Mercer				Recovery Director, Community - TBD		
RESOURCE TABLE: Made up of organizations that have resources to give individuals. Will come and go based on what they have to give.				HOUSING (HUD, USDA, DOJ, FEMA)	ECONOMIC RECOVERY (DOC, SBA, USDA, DHS, DOL, USTREAS)	HEALTH & SOCIAL SERVICES RECOVERY (DHHS, CNCS, USDA, DOC, DHS NPPD, DHS/CRCL, HUD, DOI, DOJ, DOL, EPA, FEMA)
FINANCE (Dayton Foundation)	REBUILD & REPAIR (LSS)	DISASTER CASE MANAGEMENT (CSS)		Affordable Housing Permitting & Zoning Strengthen Housing Market Land Use Planning Build Inclusive & Sustainable Communities Mitigation Measures Resilient Construction Implementation Homeownership Programs	Business Recovery Economic Development Workforce Development Community Investments	Restore and improve health care and social service capabilities Increase resilience and sustainability Promote independence and well-being of community members Build community networks
Financial Asset Map	Repair & Rebuild Construction Estimates Project Coordination Material acquisitions and distribution Code Compliance FHLB resources	Intake and Referral Develop Recovery Plans Coordinate w/ Recovery Partners in Delivery of Services and Resources	This high-level advisory group will support both the individual and community long term recovery networks. It will be comprised of 16 community leaders.	NATURAL & CULTURAL RESOURCES RECOVERY (DOI, EPA, FEMA)	Historic Preservation Environmental planning Green Space Community well-being Resource Protection Arts/Culture/History	INFRASTRUCTURE SYSTEMS RECOVERY (USACE, DOE, DHS, DOT, FEMA)
EMOTIONAL & SPIRITUAL CARE (LSS/PMV)	MATERIAL MANAGEMENT (SVDP)	VOLUNTEER MANAGEMENT		COMMUNITY PLANNING & CAPACITY BUILDING (FEMA)	Identify/prioritize critical infrastructure systems and assets Create an interagency, inter-jurisdictional recovery planning	
Crisis Intervention Develop faith based partnership network Collaborate with disaster case managers Canvas for unmet needs	In Kind Donations Warehousing Distribution	Identify Volunteer Opportunities Recruit Qualify & Skill Assess (for select assignments) Assign / Schedule Hospitality & Debrief		Community assessments Planning, managing and implementing recovery post-disaster		

RECOVERY TIMELINE FOR INDIVIDUAL NETWORK: 1-3 YEARS

Draft 01.02.2020

RECOVERY TIMELINE FOR COMMUNITY NETWORK: 1-10 YEARS

Miami Valley Domains:

- **Education**
- **Entrepreneurship, Employment & Volunteering**
- **Engagement**
- **Health & Environment**
- **Housing**
- **Neighborhood**
- **Safety & Justice**
- **Technology & Connectivity**
- **Transportation**

Questions?

Timothy Little
FEMA R5
Regional CPCB Coordinator
timothy.little@fema.dhs.gov
202.615.8267



FEMA