



# Regional Environment & Economic Development

2025 Facility Planning Area Outreach



**MIAMI VALLEY**  
Regional Planning Commission



## Project Overview

---

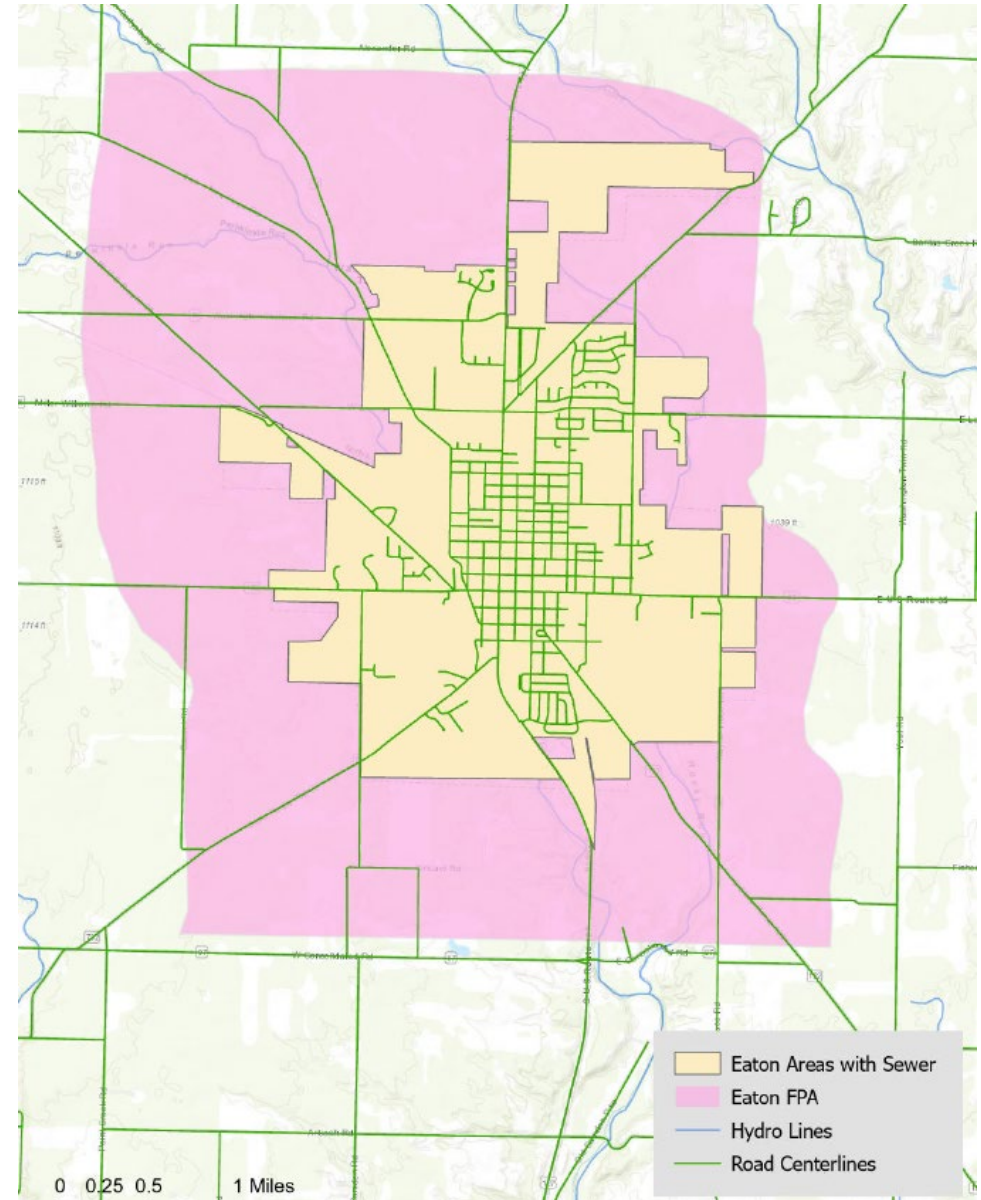
- **Purpose:** seeking to learn what updates are needed to Facility Planning Areas in the region proactively.
  - Seeking to avoid “emergency” updates
- Started with **Darke County**
- **Next will be Preble County**
- **Approach:** MVRPC will reach out and provide baseline data for each community to review. This will allow individual communities to decide on the need for an update.



# Baseline Data – FPA Map

Current MVRPC GIS mapping of:

- FPA area
- Current sewer service area



# Baseline Data – Population Estimates



## Census population data and projections

- 2020 Census in the FPA
- 2050 population projections based on ODOD growth rates.

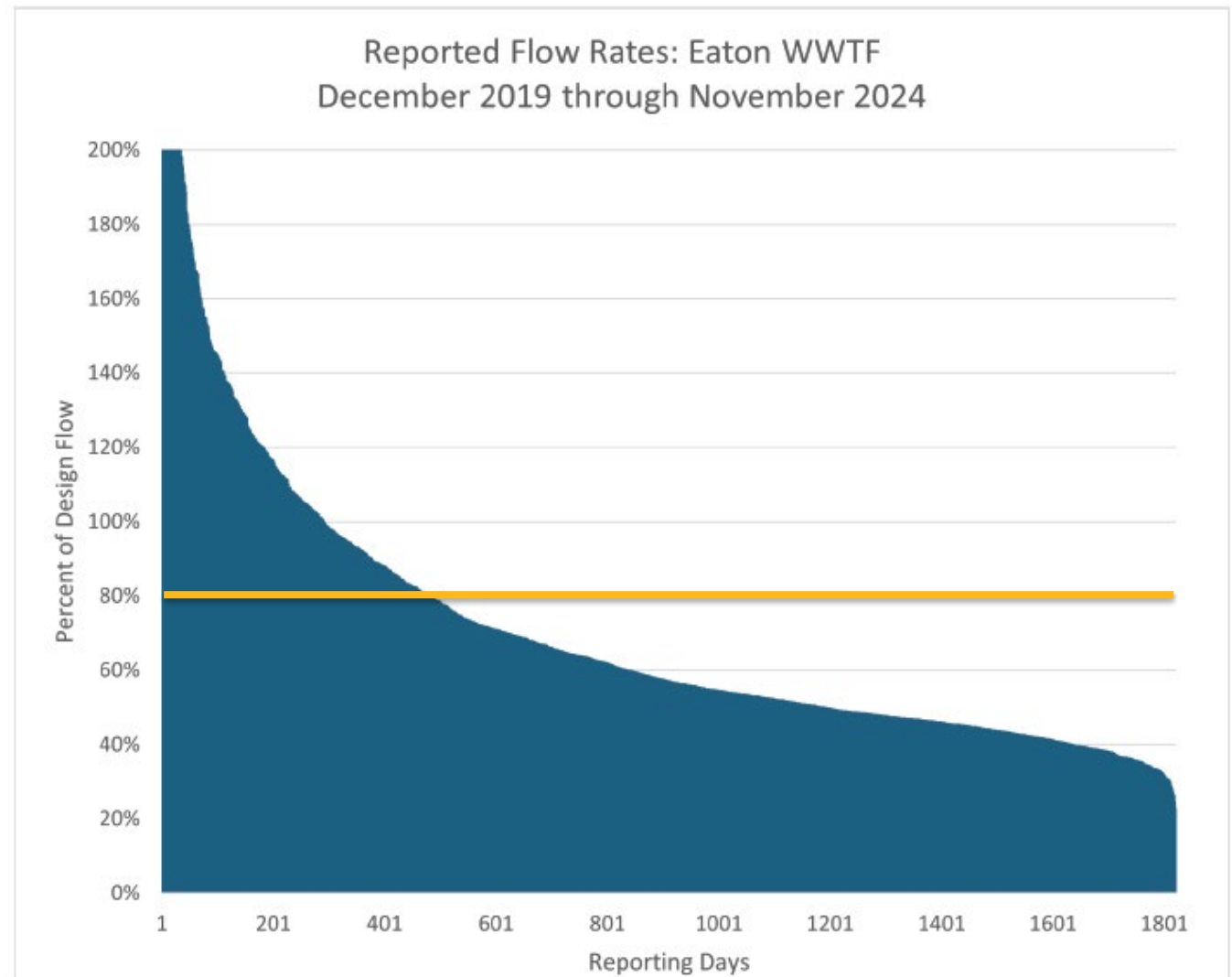
Area	2020 Census	2050 Projected
Community	8,391	6,779
FPA	8,898	7,190
County	40,999	33,130



# Baseline Data – Treatment Facility Utilization

Reported  
Flows as  
compared to  
rated  
capacity of  
the facility

- As reported to Ohio EPA





## Updating the Facility Plan and FPA

---

- Where is our community growing?
  - What does the Comp Plan say?
- Will future growth areas need sanitary sewer service?
- How much population will we be serving in 20 years?
- How much flow is expected?





## Updating the Facility Plan and FPA

---

- Is our current collection system able to handle that flow? Any bottlenecks?
  - Is a sewer upgrade needed? Where? By when?
- Is our treatment facility able to handle that expected flow and meet Ohio EPA permit requirements?
  - Is a WWTF upgrade needed? By when?
- Has the public had a chance to review and comment?





# Questions & Comments