

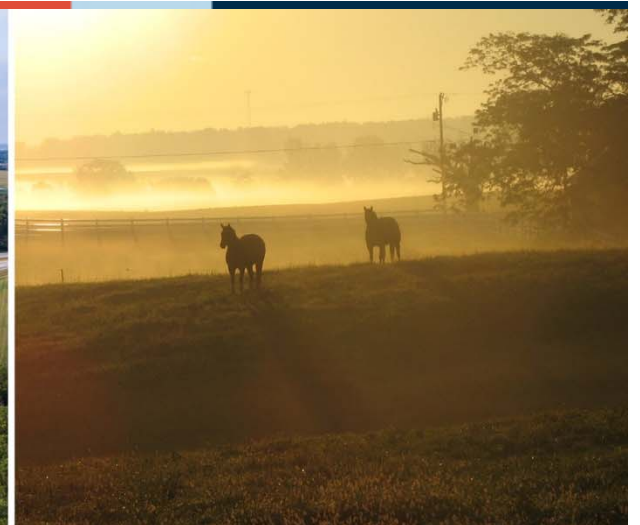


MIAMI VALLEY

Regional Planning Commission

January 18, 2023 Workshop

Land Use and Socio-Economic Data





Welcome and Introductions

Draft Goals and Objectives

The goals and objectives of the Darke, Preble, and Shelby Counties Regional Transportation Plan strive to improve the multimodal transportation system in a manner that supports enhanced accessibility and mobility for all people and freight resulting in a higher quality of life for its residents and economic development opportunities for the Region.

SAFETY

- Improve safety by reducing crashes.
- Evaluate routes with high Amish populations to accommodate mixed buggy/vehicular traffic.
- Evaluate and define truck and alternative truck routes including improved signage.
- Evaluate rail crossings for extended blockages.

SYSTEM PRESERVATION

- Support projects that maintain the condition of the existing transportation system in a state of good repair.
- Upgrade the electrical system in preparation for an increase in transportation system electrification.

MOBILITY

- Leverage and expand existing public transportation services by establishing an on-demand, multi-county, mobility management one-call center.
- Explore cross-county public transportation options.
- Improve the sidewalk and bikeway network to facilitate access to employment hubs and as a form of active transportation.
- Research and leverage new technologies to improve the mobility of seniors and those without access to an automobile.

ECONOMIC DEVELOPMENT

- Improve access to employment hubs and routes for commuters.
- Improve access to Interstates to facilitate the movement of goods and attract new businesses and residents.
- Identify regional growth areas to plan for improvements in advance of development.

QUALITY OF LIFE

- Conduct a study to assess the feasibility of connecting the Cities and Villages in the Region to each other and to the wider Statewide network through a network of bikeways.
- Preserve the rural character of the area by protecting agriculture while diversifying economic opportunities.

STEWARDSHIP

- Address transportation priorities in an equitable manner consistent with environmental principles.
- Research and seek existing and new funding sources to further the goals of the Regional Transportation Plan.



Buggy Related Crashes/Issues

COUNTY NAME	GROUP NAME	CONGREGATION	ADHERENTS
Darke County	Old Brethren (California)	1	31
Darke County	Old Brethren (Goshen)	1	104
Darke County	Old German Baptist Brethren	4	405
Darke County	Old German Baptist Brethren, New Conference	2	224
Darke County	Old Order German Baptist Church	2	183
Preble County	Amish Groups, undifferentiated	1	62
Preble County	Brethren Church, The (Ashland, Ohio)	2	
Preble County	Old German Baptist Brethren	3	339
Preble County	Old German Baptist Brethren, New Conference	3	400




Buggy Related Crashes/Issues

COUNTY	ROUTE	FROM	TO
Preble	US 40		
Preble	US 127		
Preble	US 35		
Preble	SR 320		
?	?	?	?



Website Improvements (rtpo.mvrpc.org)



[TRANSPORTATION](#)
[REGIONAL PLANNING](#)
[ENVIRONMENT](#)
[REGIONAL INITIATIVES](#)
[DATA & MAPPING](#)
[OUR MEMBERS](#)
[OUR VISION](#)

[HOME](#) // [TRANSPORTATION](#) // [RTPO PILOT PROGRAM](#)

- Long Range Planning (LRTP) ↓
- Short Range Plan (SRP) ↓
- Transportation Financing
- RTPO Pilot Program**
- Services for Non-Drivers ↓
- Bikeways & Pedestrians ↓
- Miami Valley RideShare
- Drive Less Live More
- Public Education Campaigns
- Miami Valley Roads

In 2013, ODOT initiated the Regional Transportation Planning Organization (RTPO) pilot program to assist multi-county rural regional planning organizations in developing transportation plans and overall transportation planning expertise amongst RTPO staff. Since then six agencies have officially been designated as RTPOs by the Governor.

MVRPC is excited to be a new participant in the RTPO pilot program working with its rural members in Darke, Preble, and Shelby Counties to advance transportation planning and partnerships that will benefit both ODOT and the member governments of the RTPO.

The first step towards achieving official RTPO designation is the development of a Regional Transportation Plan. For details on the process, see the [scope document](#) for SFY 2022-2023. The development of the Regional Transportation Plan will proceed along the timeline depicted below.

RTPO Pilot Scope and Schedule Year 1

December 2022
Initial Transportation Planning Databases
LRTP Goals and Objectives

June 2023
Future Conditions

March 2023
Existing Conditions

Establish RTPO Organizational Structure Within MVRPC

RTPO Pilot Scope and Schedule Year 2

September 2023
Needs Analysis and Draft Projects

May 2024
Adopt Transportation Plan

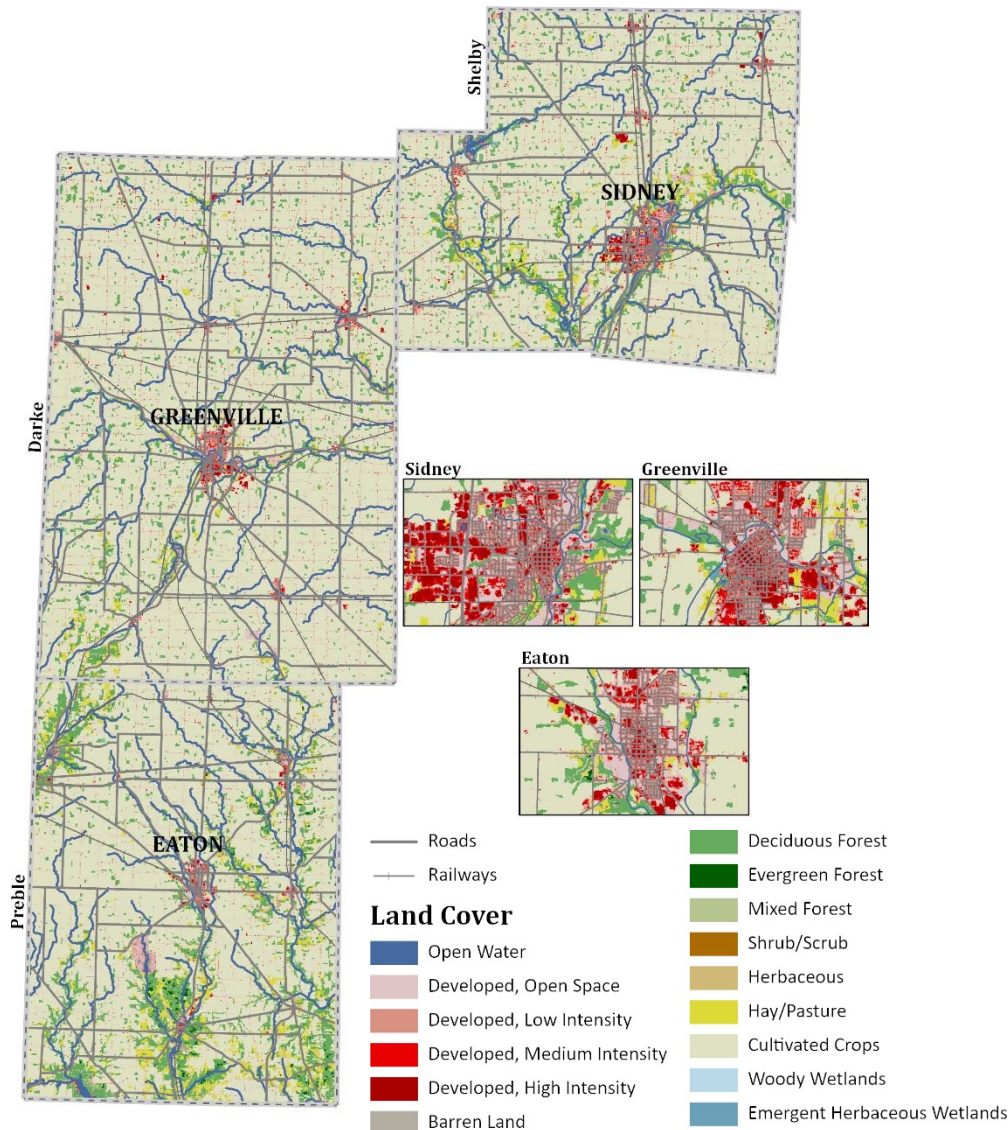
December 2023
Fiscal Constraint
Plan Recommendations

Public Participation

Regional Transportation Planning Organization Meetings & Workshops	Date	Location	Presentations
RTPO Steering Committee	Tuesday, August 16, 2022	Dayton Realtors - 1515 S. Main St., Dayton	RTPO Meeting Agenda August 2022 RTPO Meeting Mailout August 2022
RTPO Workshop	Wednesday, October 19, 2022	Zoom	October RTPO Steering Committee Presentation
RTPO Steering Committee	Wednesday, November 16, 2022	Darke Rural Electric Facility - 1120 Fort Jefferson Ave., Greenville	RTPO Meeting Agenda and Presentation November 2022
RTPO Workshop	Wednesday, January 18, 2023 - 2:00 p.m.	Zoom	
RTPO Steering Committee	Wednesday, February 15, 2023 - 2:00 p.m.	Shelby County Agriculture Center - 820 Fair Road, Sidney	



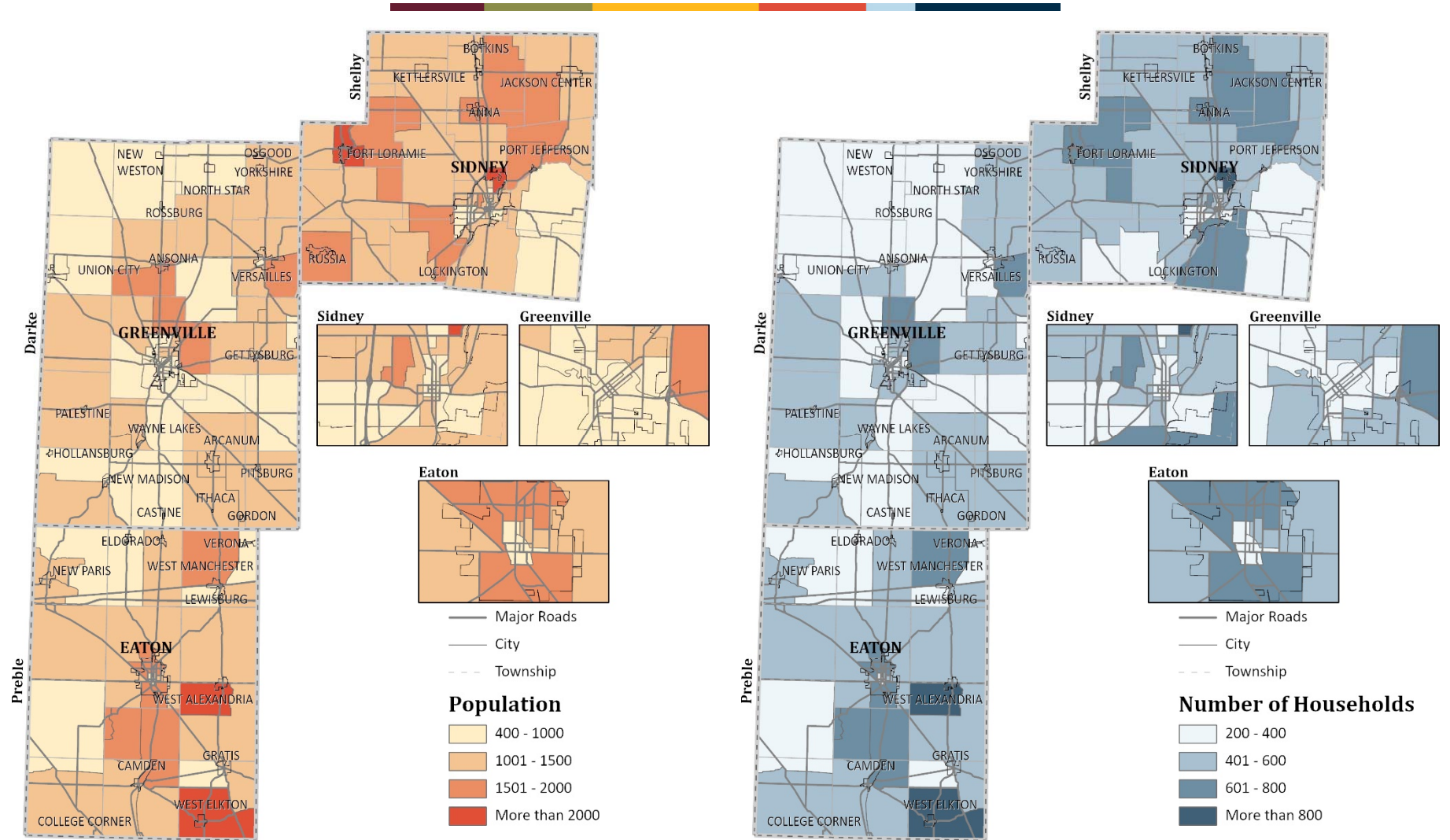
Land Use



- Agriculture is the dominant land use in the region
- County seats make up most of the developed land area
- Smaller cities and towns are clustered near major roads (e.g. I-70, I-75, US-35, US-127, OH-47, & OH-503) and Lake Lakengren
- Lakes, rivers, streams, and forests provide natural resources for wildlife and recreation
 - Great Miami River, Stillwater River & Prairie Reserve, Twin Creek, Greenville Creek & Falls, Lake Loramie, Lake Lakengren, Wayne Lakes, Acton Lake & Hueston Woods
- Commercial corridors consist primarily of walkable historic city/town centers and suburban-style shopping centers & office parks on the edges of cities and towns



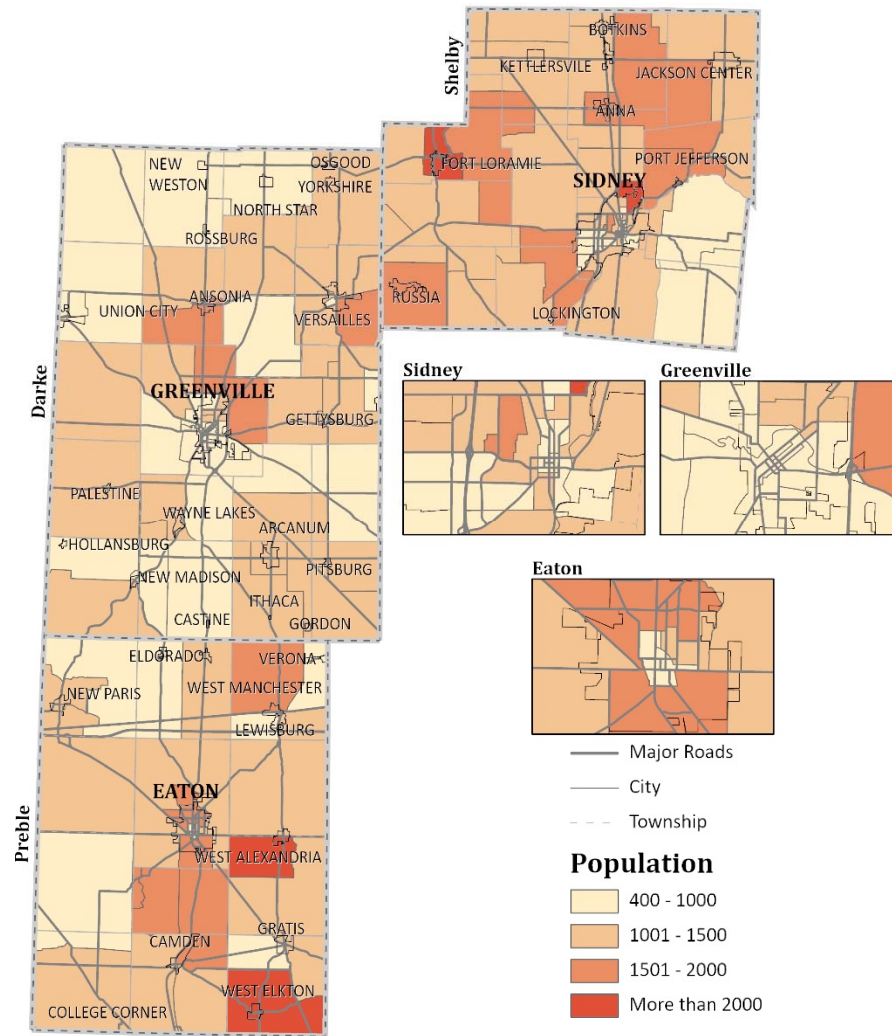
Population & Households



County	2020 Population	2020 Households
Darke	51,881	20,925
Preble	40,999	16,412
Shelby	48,230	18,803

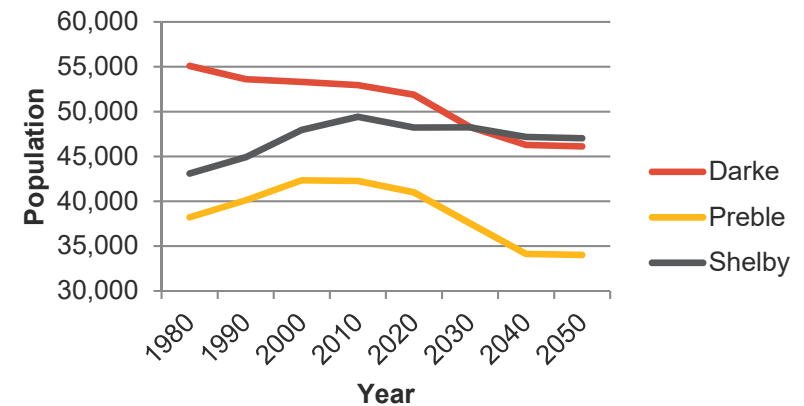


Population Change & Projections



- The regional population is expected to hold mostly steady between 2020 and 2050
- Population decline in Darke County is expected to level off
- Growth in Preble & Shelby Counties is expected to level off

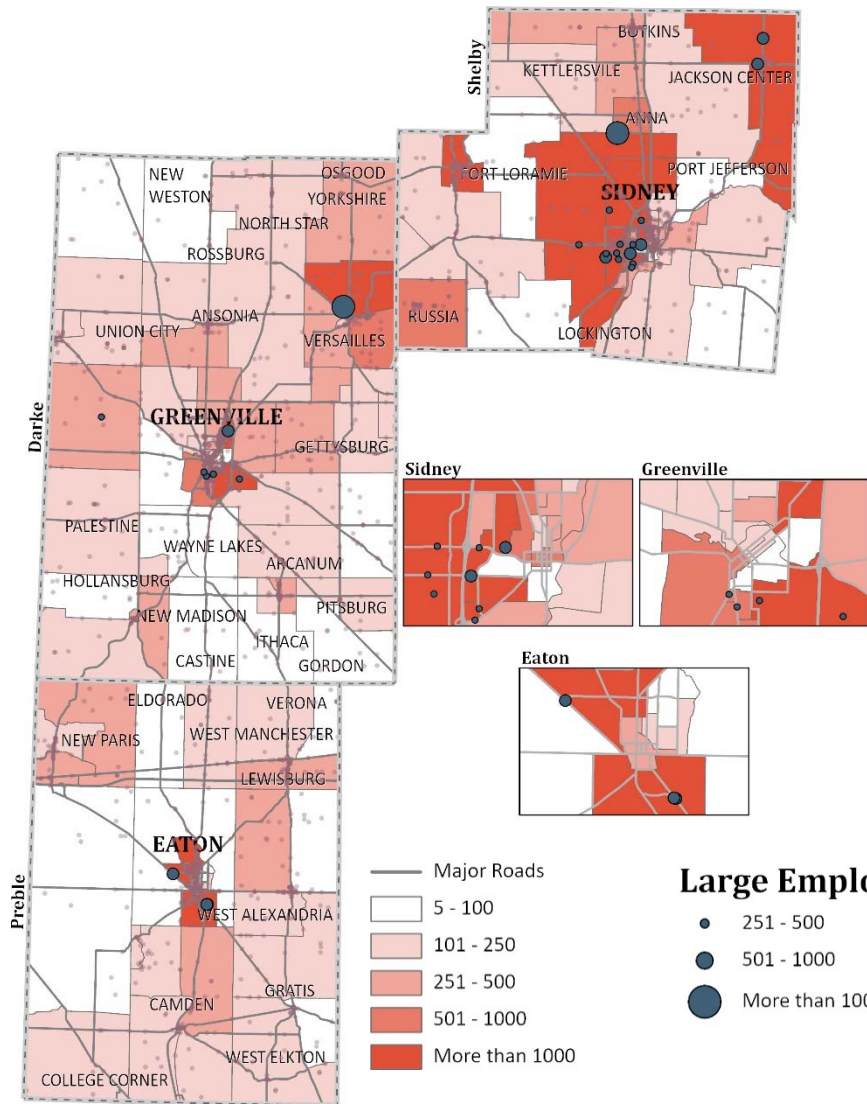
County	Change 1980 to 2020	Change 2010 to 2020
Darke	-6%	-2%
Preble	7%	-3%
Shelby	12%	-2%



County	1980	1990	2000	2010	2020	2030	2040	2050
Darke	55,096	53,619	53,309	52,959	51,881	48,280	46,290	46,120
Preble	38,223	40,113	42,337	42,270	40,999	37,540	34,140	34,020
Shelby	43,089	44,915	47,964	49,423	48,230	48,240	47,180	47,040



Employment Sectors

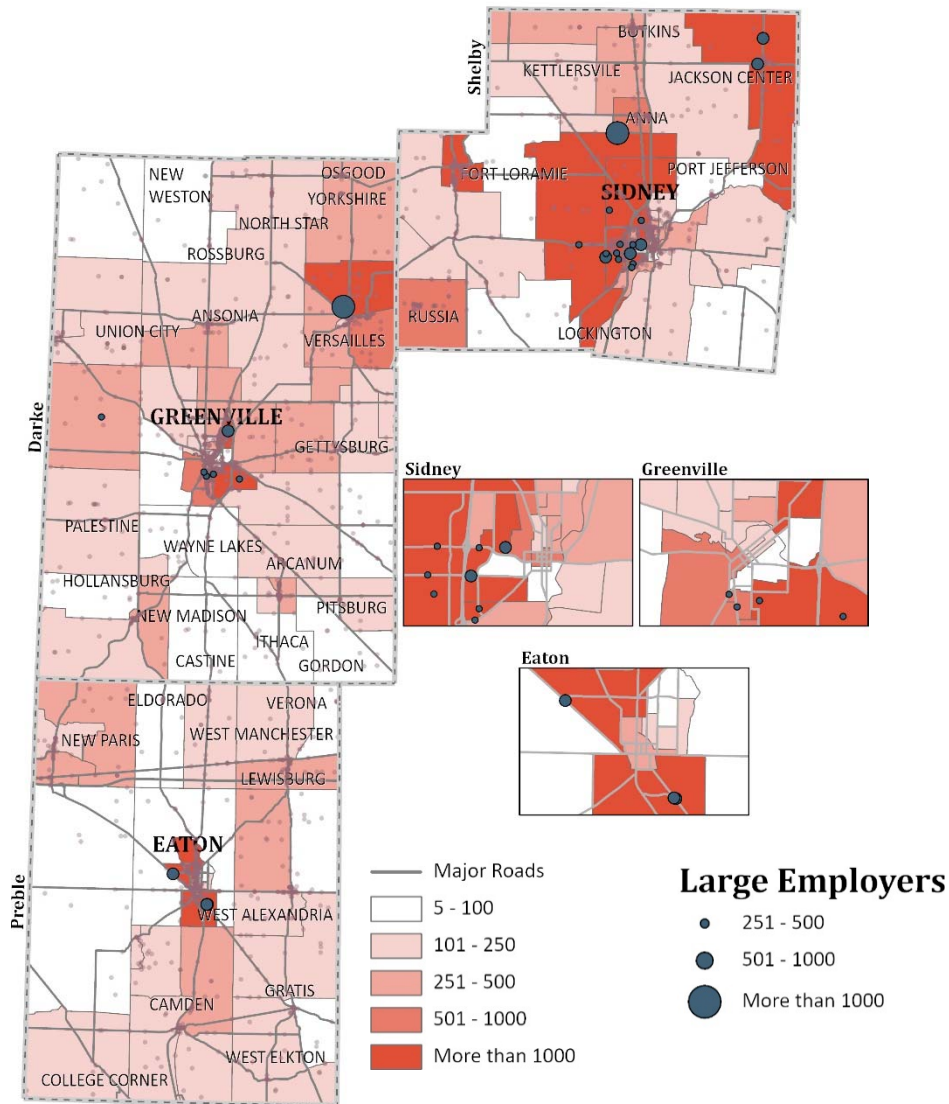


- Manufacturing has the largest employment base in each county
- Nearly half of Shelby's employees (47.14%) are in manufacturing
- Healthcare is especially prevalent in Darke (14.36%)
- Education is especially prevalent in Preble (10.22%)

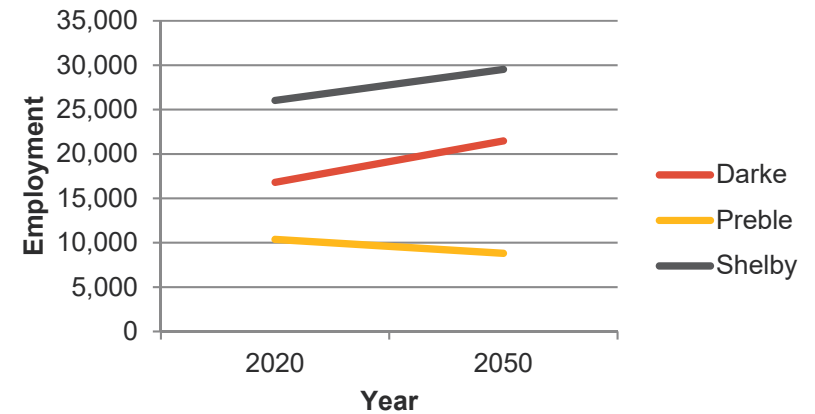
Industry	Darke	Preble	Shelby	RTPO
Agriculture, Forestry, Fishing and Hunting	3.80%	1.00%	0.55%	1.66%
Mining	0.02%	0.21%	0.00%	0.05%
Utilities	0.39%	0.40%	0.38%	0.38%
Construction	5.10%	4.05%	5.90%	5.29%
Manufacturing	23.14%	32.79%	47.14%	36.76%
Wholesale Trade	4.42%	2.72%	4.41%	4.08%
Retail Trade	11.06%	10.97%	7.16%	9.13%
Transportation and Warehousing	7.16%	4.22%	4.21%	5.15%
Education Services	8.38%	10.22%	5.53%	7.34%
Health Care and Social Assistance	14.36%	11.29%	8.09%	10.69%
Arts, Entertainment, and Recreation	6.51%	8.62%	5.71%	6.53%
Public Administration	3.09%	4.14%	2.48%	3.00%
Other Services	12.56%	9.39%	8.44%	9.93%



Employment Change & Projections



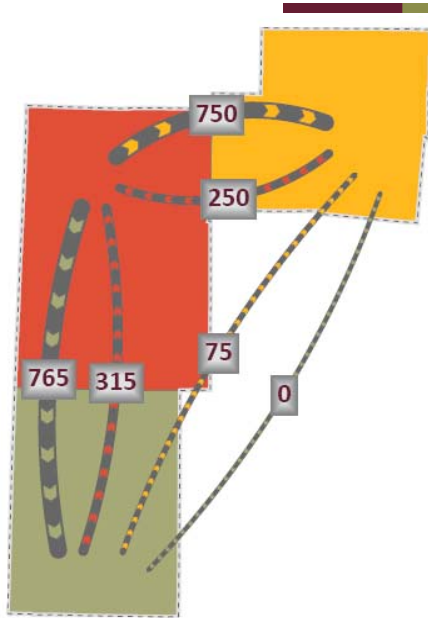
- Job growth projected in Darke and Shelby Counties
- Modest decline projected in Preble County



County	2020	2050	Diff (ODOT)	Change 2020 to 2050
Darke	16,810	21,469	4,659	28%
Preble	10,376	8,800	-1,576	-15%
Shelby	26,034	29,536	3,502	13%

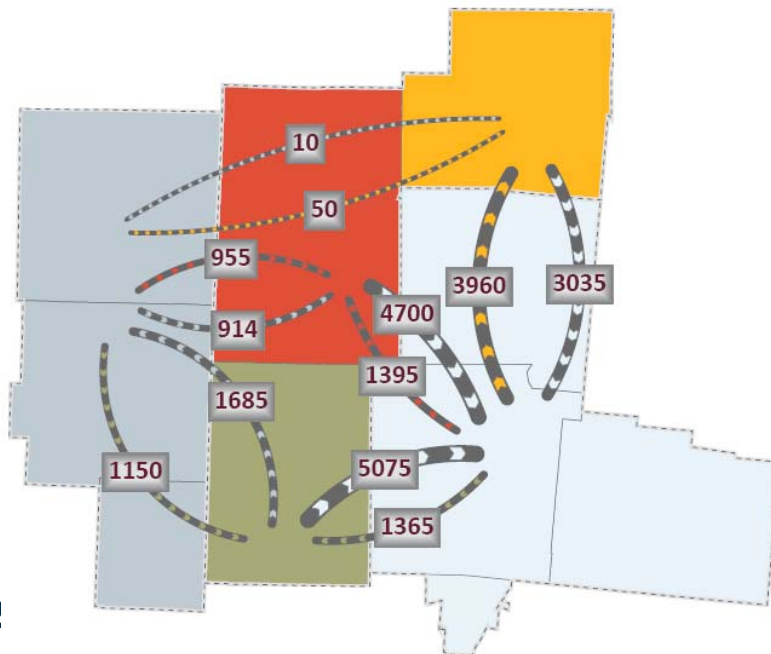


Employment Flows



- Darke and Preble Counties have a greater number of workers residing in the counties than workers employed within the counties
 - Large numbers of residence commute to MPO Counties, with some commuting to Indiana counties
- Shelby County has more employed within the county, serves as a regional job center
 - Draws more employees from MPO counties than county residents working within the MPO

County	County Employees	Working Residents
Darke	16,810	23,552
Preble	10,376	18,479
Shelby	26,034	23,146



		Workplace				
Residence		Darke	Preble	Shelby	Indiana	MPO
	Darke	14,720	765	750	914	4,700
	Preble	315	8,570	75	1,685	5,075
	Shelby	250	0	17,160	10	3,035
	Indiana	955	1,150	50	32,325	545
	MPO	1,395	1,365	3,960	299	389,340

*MPO figures include all of Warren County





Questions/Discussion



Next Meeting:

Shelby County Agricultural
Service Center
820 Fair Road, Sidney Ohio
February 15th 2-3 pm

The goals and objectives of the Darke, Preble, and Shelby Counties Regional Transportation Plan strive to improve the multimodal transportation system in a manner that supports enhanced accessibility and mobility for all people and freight resulting in a higher quality of life for its residents and economic development opportunities for the Region.

SAFETY

- Improve safety by reducing crashes.
- Evaluate routes with high Amish populations to accommodate mixed buggy/vehicular traffic.
- Evaluate and define truck and alternative truck routes including improved signage.
- Evaluate rail crossings for extended blockages.

SYSTEM PRESERVATION

- Support projects that maintain the condition of the existing transportation system in a state of good repair.
- Upgrade the electrical system in preparation for an increase in transportation system electrification.

MOBILITY

- Leverage and expand existing public transportation services by establishing an on-demand, multi-county, mobility management one-call center.
- Explore cross-county public transportation options.
- Improve the sidewalk and bikeway network to facilitate access to employment hubs and as a form of active transportation.
- Research and leverage new technologies to improve the mobility of seniors and those without access to an automobile.

ECONOMIC DEVELOPMENT

- Improve access to employment hubs and routes for commuters.
- Improve access to Interstates to facilitate the movement of goods and attract new businesses and residents.
- Identify regional growth areas to plan for improvements in advance of development.

QUALITY OF LIFE

- Conduct a study to assess the feasibility of connecting the Cities and Villages in the Region to each other and to the wider Statewide network through a network of bikeways.
- Preserve the rural character of the area by protecting agriculture while diversifying economic opportunities.

STEWARDSHIP

- Address transportation priorities in an equitable manner consistent with environmental principles.
- Research and seek existing and new funding sources to further the goals of the Regional Transportation Plan.