



# PLAN4Health Miami Valley

Milo Simpson  
Planner I  
[msimpson@mvrpc.org](mailto:msimpson@mvrpc.org)





**Place-  
Based  
Approach**

# Improved Health Outcomes in the Miami Valley

**People-  
Based  
Approach**



Convene and engage partners to improve environments that are known to be key determinants of health

Promote and advocate “Health in All Plans and Policies”

Advance planning efforts aimed at creating conditions for healthy people and communities



**PLAN4**Health  
Miami Valley





# Outcome and Output

- Not to develop a Regional Health Plan nor does it intend to duplicate planning efforts undertaken by local public health departments.
- Not a Health Equity initiative. However, this topic will be included as appropriate during each project/program.
- Anticipated outcomes and outputs include data, maps, infographics, information sharing applications, forums for knowledge and information sharing, networking opportunities, and best practices.



# Projects



Understanding  
Where We Are



Identifying Barriers &  
Opportunities



Seeking Solutions &  
Building Capacity

## PLAN4Health – Miami Valley: A Planning for Health Initiative

- Health Environment Assessment
- Built Environment Assessment
- Community Health Assessment Mapping

- Plan Audit and Needs Assessment

- Healthy Communities Planning Toolkit
- Healthy Communities Roundtables





# Health Environment Assessment

PLAN4Health - Miami Valley Initiative

Miami Valley Regional Planning Commission | Published March 3, 2022



Social determinants of health (SDOH) is defined as the “conditions in the environments in which people are born, live, learn, work, play, worship, and age that affect a wide range of health, functioning, and quality-of-life outcomes and risks.”

<b>Economic Stability</b>	<b>Education Access and Quality</b>	<b>Social and Community Context</b>	<b>Health Care Access and Quality</b>	<b>Neighborhood and Built Environment</b>
Income	High School Education	Linguistic Isolation	Health Insurance	Access to Healthy Foods
Poverty	Preschool Enrollment	Single Parent Households	Access to Primary Care	Vacant Housing
Unemployment	Higher Education	Civic Participation	Accessibility to Health Care	Crime
Housing Burden	Elementary School Quality	Social Cohesion	Life Expectancy	Housing Quality
Housing Instability		Concentrated Poverty		Harmful Condition Exposure





**Population Health**



**Access to Care**



**Social & Economic Environment**



**Physical Environment**

*Source: 2021 Health value Dashboard, Health Policy Institute of Ohio*



# LIVE DEMO



Health Environment Assessment



# Health Environment Assessment

PLAN4Health - Miami Valley Initiative

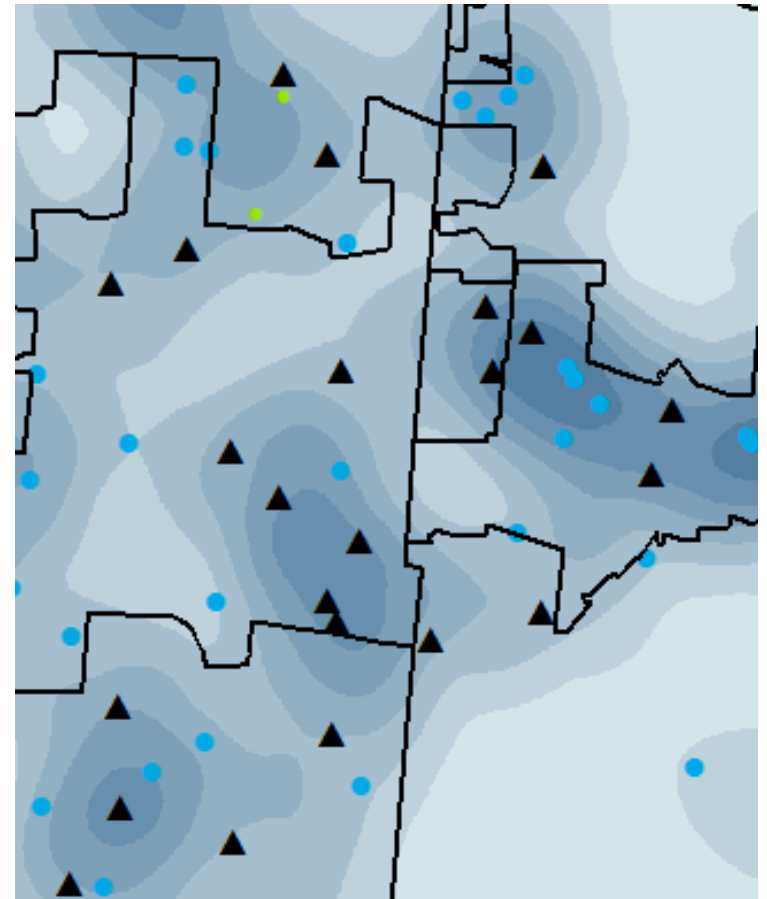
Miami Valley Regional Planning Commission | Published March 3, 2022



# Built Environment Assessment

Examine the physical environment to evaluate the level of active living condition based on the comprehensive index:

- Land Use
- Pedestrian Friendly Environment
- Activity Infrastructure





# PLAN4Health Miami Valley

[www.mvrpc.org/regional-planning/plan4health-miami-valley](http://www.mvrpc.org/regional-planning/plan4health-miami-valley)



Scan to view the application!

Milo Simpson  
Planner I  
msimpson@mvrpc.org

