

**Miami Valley Regional Planning Commission  
Technical Advisory Committee (TAC) Meeting  
Thursday, November 18, 2021  
9:30 AM  
Agenda**

<u>Item</u>	<u>Topic</u>	<u>Pg</u>	<u>Est. Time</u>	<u>Presenter</u>
I.	Call to Order		9:30	P. Gruner
II.	Approval of October 21, 2021 – Meeting Minutes	1	9:35	P. Gruner
III.	Public Comment Period on Action Items		9:36	P. Gruner
IV.	<b>RPC (REGIONAL PLANNING COMMISSION) ACTION ITEMS</b>			
*	A. GRMI Annual Review and Plan Update and Amendment	5	9:38	E. Baxter
*	B. Wayne Lakes FPA Amendment	19	9:45	M. Lindsay
V.	<b>MPO (METROPOLITAN PLANNING ORGANIZATION) ACTION ITEMS</b>			
*	A. SFY2021-SFY2024 Transportation Improvement Program (TIP) Amendment #14	67	10:00	P. Arnold
VI.	<b>INFORMATION ITEMS</b>			
*	A. Proposed New Projects Requesting MVRPC's STP, CRRSAA & TA Funds	79	10:05	P. Arnold
*	B. Going Places Implementation Tools Progress Update	91	10:10	M. Kim
* VII.	<b>EXECUTIVE DIRECTOR'S REPORT</b>	109	10:20	B. Martin
VIII.	<b>ADJOURNMENT</b>		10:30	P. Gruner

\* Attachment/ \*\*Handout/All Information is available on the MVRPC Committee Center

Interpreters for hearing-impaired individuals are available upon request; requests should be made at least one week ahead.

**\*\*The NEXT MEETING is January 20, 2022\*\***

**Until further notice all meetings will be held in-person at the Dayton Realtors. We will request everyone wear a mask, practice social distancing and RSVP before the deadline.**



**MIAMI VALLEY REGIONAL PLANNING COMMISSION  
TECHNICAL ADVISORY COMMITTEE  
OCTOBER 21, 2021  
MINUTES**

**Dayton Realtors  
1515 S. Main St., Dayton, OH**

**October 21, 2021  
9:30 AM**

**Members/ Alternates**

Joseph Brzozowski, City of Dayton  
Mike Busse, Village of Versailles  
Barry Conway, City of Franklin  
Rob Cron, City of Vandalia  
Vanessa Glotfelter, Montgomery County TID  
Paul Gruner, Montgomery County Eng.  
Rap Hankins, City of Trotwood  
Amy Havenar, City of Piqua  
Walt Hibner, CenterPoint Energy  
Dominic Miller, City of Xenia  
Rich Norton, City of West Carrollton  
Don O'Connor, Miami Conservancy District  
Brandon Policicchio, Greater Dayton RTA  
Jillian Rhoades, City of Troy  
Jeffrey Sheridan, Village of West Milton  
William Singer, City of Englewood  
John Sliemers, City of Kettering  
Jim Snedeker, City of Brookville  
Doug Spitler, City of Oakwood  
John Zelinski, City of Dayton

**Other Alternates/Guests**

Nathan Fischer, Woolpert  
Jay Hamilton, Mead & Hunt  
Chad Henry, Choice One  
Anne Rahall, TEC Engineering, INC  
David Swanson, City of Centerville

**Staff**

Paul Arnold  
Savannah Diamond  
Laura Henry  
Mike Lucas  
Brian Martin  
Ami Parikh  
Stacy Schweikhart

**I. INTRODUCTION**

Chairperson Gruner called the meeting to order at 9:30 a.m. Self-introductions were made.

**II. APPROVAL OF AUGUST 19, 2021 MEETING MINUTES**

Mr. Hankins made a motion to approve minutes. Mr. O'Connor seconded. The motion passed unanimously.

**III. Public Comment Period on Action Items**

None

**IV. MPO (METROPOLITAN PLANNING ORGANIZATION) ACTION ITEMS**

**A. SFY2021-SFY2024 Transportation Improvement Program (TIP) Amendment #13**

Mr. Arnold referred to the 13th amendment to the SFY 2021-2024 TIP and the numerous project changes made by MVRPC and ODOT. He referred to the packet showing the tables broken down by county, as well as the statewide line item project tables. Mr. Arnold stated that staff recommends forwarding Amendment #13 to the SFY 2021-SFY 2024 Transportation Improvement Program to the Board of Directors.

Mr. Conway made a motion to recommend forwarding to the Board of Directors for adoption. Mr. Policicchio seconded the motion. The motion passed unanimously.

## **B. Recommended Approval of FAST Act Safety Performance Management Targets**

Ms. Parikh presented information on the Fixing America's Surface Transportation (FAST) Act. She explained the FAST Act continues to place emphasis on the performance management approach first specified in the Moving Ahead for Progress in the 21st Century Act (MAP-21). It requires state DOT's, transit agencies, and MPOs to establish performance and outcome-based programs in several national priority areas. The MPO deadline for adopting safety performance measure targets is February 26, 2022. MVRPC has decided to support the State's targets for the safety measures. Safety measures apply to all public roads and are adopted annually. Ms. Parikh then summarized the safety measures and targets for 2022 including the impact that a 2% annual reduction goal would have in the MVRPC area. Ms. Parikh then opened the floor for questions.

Chairperson Gruner asked for a motion to forward the resolution supporting the FAST Act safety performance management targets request to the Board of Directors.

Mr. Norton made a motion to forward the adoption request to the Board of Directors. Mr. Conway seconded the motion. The motion passed unanimously.

## **V. INFORMATION ITEMS**

### **A. EDA Partnerships & Projects Update**

Ms. Schweikhart provided an update on the EDA partnerships and projects. She discussed the Disaster Recovery Leadership (a response from the 2019 Memorial Day Tornadoes) and provided information on the disaster recovery dashboards, regional resiliency planning, the RETREET Program, federal investment summary and projects, and the Disaster Recovery Leadership Board. She then discussed the Dayton Region Economic Development Strategy and explained how the DDC and MVRPC are partnering with the U.S. Economic Development Administration to update the Comprehensive Economic Development Strategy (CEDS). Ms. Schweikhart then provided information on the CEDS process, a background summary and data analysis, industry cluster analysis, the strengths, opportunities, aspirations and risks (SOAR analysis) on community engagement, the identification of strategic priorities, and stakeholder engagement. She referred to a map of the Economic Development Districts (EDD) and showcased how the Miami Valley Region is not currently part of an active EDD. Lastly, Ms. Schweikhart shared current EDA funding opportunities. She then opened the floor for questions and addressed how they projected the 2026 population from the 2020 Census and community surveys, how MVRPC and DDC work between private and public sectors and American Rescue Plan funding.

Mr. Hankins thanked MVRPC and Ms. Schweikhart for their efforts in the Disaster Recovery.

## **VI. EXECUTIVE DIRECTOR'S REPORT**

Mr. Martin welcomed everyone and reviewed the ED's Update:

- MVRPC receives award at the 2021 Ohio GIS Conference
- Del Mar Encore Fellows Program brings together experienced leaders to address challenging community issues
- Miami Valley Age Friendly Network kickoff
- Miami Valley TREEcovery Campaign Project Update
- Miami Valley Roads.org
- State Route 235 Bridge rehabilitations at Chambersburg update
- Grants and funding resources



Mr. Martin asked TAC members to continue attending meetings in person to ensure they are meeting quorum. RSVP is encouraged from members and guests due to limited space. Mr. Martin then introduced Ms. Savannah Diamond as MVRPC's new Assistant to the Executive Director. She will be the new point of contact for meeting information and RSVPs.

## **VII. ADJOURNMENT**

Chairperson Gruner adjourned the meeting at 10:30 a.m.

The next meeting is scheduled for **Thursday, November 18<sup>th</sup> at 9:30 a.m.**





## MEMORANDUM

**To:** Technical Advisory Committee, Board of Directors  
**From:** MVRPC Staff  
**Date:** November 18, 2021  
**Subject:** Greater Region Transportation Coordination Plan Annual Review and Plan Amendment

This memo provides background information to the MVRPC Technical Advisory Committee and Board of Directors on the Greater Region Mobility Initiative (GRMI) Annual Review and Plan Amendment.

MVRPC worked in coordination with the ODOT Office of Transit on a Public Transit-Human Services Transportation Coordination Plan for an eight-county region. The region includes Preble, Darke, Shelby, Miami, Montgomery, Greene, Clark, and Champaign Counties. A GRMI Coordination Council, with representatives from across the region and including older adults and individuals with disabilities, was formed to develop the plan with staff guidance and to implement elements of the plan going forward. The Plan was adopted by the County Commissioners of each participating county in September 2020 and MVRPC Board of Directors in November 2020.

As part of the regional coordination initiative, it is required that the plan be reviewed annually by each county transportation planning committee and the GRMI Coordination Council. During this review process, some counties identified changes to their local transportation unmet needs. Per ODOT guidance, changes to unmet needs or goals and strategies require a formal amendment to the plan. These changes were acknowledged by relevant County Commissions through a letter of support.

Plan amendments are as follows:

1. Updated local transportation unmet needs in Champaign, Clark and Shelby Counties

### Champaign County Updates to Unmet Needs

1. Out of county travel
2. Coordination between counties
3. Early, evening and weekend hours and scheduling same day trips and future trips

### Clark County Updates to Unmet Needs

1. After hours transportation options, including weekends
2. Public information (expand on PI utilizing additional methods of delivery)
3. Additional funding (expand research including considerations of non-traditional)



# MIAMI VALLEY

Regional Planning Commission

10 North Ludlow St., Suite 700  
Dayton, Ohio 45402

t: 937.223.6323  
f: 937.223.9750  
TTY/TDD: 800.750.0750  
www.mvrpc.org

4. County-wide and cross county transportation options
5. Create HSTC Service Collaboration sub-committee

## Shelby County Updates to Unmet Needs

1. Driver shortage
2. Additional hours for early mornings, evenings, and holidays to accommodate chronic medical treatments and same day request
3. Transportation for employment and non-medical trips; Education of Shelby County residents regarding public and coordinated transportation
4. Affordable out of county services

## Further Documentation and Information

All documents related to the GRMI Plan can be found on the MVRPC web site:

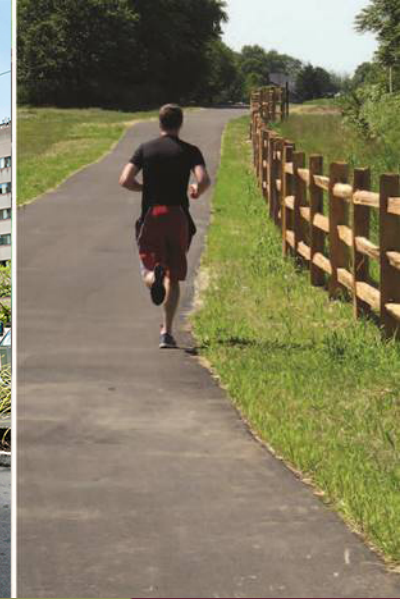
<https://www.mvrpc.org/transportation/services-non-drivers/greater-regional-mobility-initiative>

MVRPC staff recommends adoption of the GRMI Plan update and amendment as presented.

## Attachments:

1. Appendix I: 2021 Annual Review and Plan Amendment
2. Resolution for Adoption: RESOLUTION TO ADOPT THE AMENDMENT FOR THE GREATER REGION TRANSPORTATION COORDINATION PLAN 2021 UPDATE





# Greater Region Mobility Initiative Annual Plan Update, 2021





# Justification for Regions

- To reduce duplication and fill gaps in service
- ODOT sought to organize the provision of these transportation services into regions
- GRMI Plan was adopted by counties in September 2020 and Board November 2020



# Regional Annual Plan Update

- Per ODOT guidance, each regional coordinated transportation plan is required to be updated each year and revised every four years
- MVRPC serves as the Regional Coordinating Agency (RCA)
- MVRPC works in partnership with the county transportation planning committees on annual plan review progress
- Annual plan reviews & resulting plan amendments due to ODOT in December

The following table defines the roles and responsibilities of the county and regional coordinating committees.

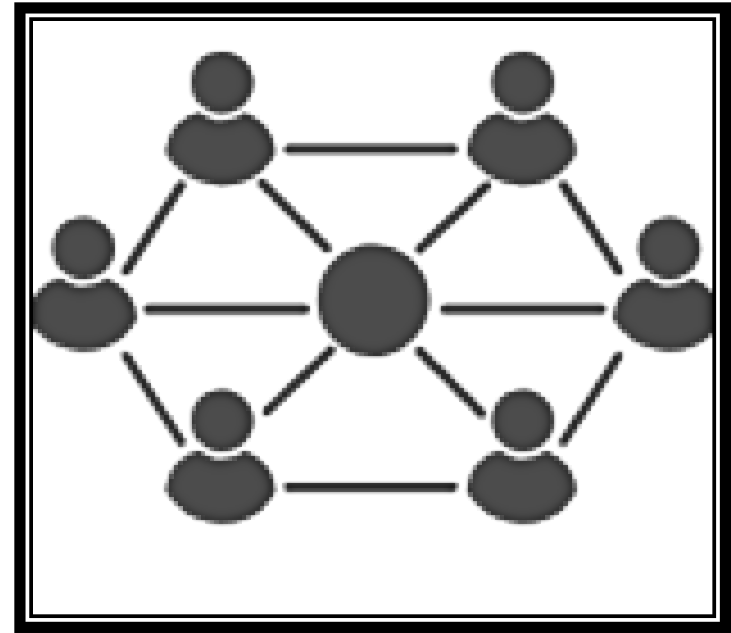
Regional Coordinated Committee	County Coordinated Committee
Write & Update Regional Plan	Public Surveys & Public Meetings
County & Regional Demographics and Population	Summarize County Unmet Needs
Manage the Adoption Process with all counties	County Goals & Strategies
Survey & Public Meetings for regional data	Provide Available Provider Information
Regional Unmet Needs summary	Provider Vehicle Information for tables
Regional Goals & Strategies	Assist Regional Coordinated Committee with Adoption of plan, updates and amendments
Include all county data into the Regional Coordinated Plan	Submit all the items above to the Regional Coordinated Committee



## Regional Annual Plan Update

---

- Each county transportation planning committee held a meeting to review unmet needs for their individual county
- Three counties identified a need for changes
  - Champaign
  - Clark
  - Darke
- Letters of Support were submitted to the RCA by the three County Commissions acknowledging changes





# Questions



# Appendix I: Annual Reviews and Plan Amendments

It is required this plan be reviewed annually by the local and regional planning committees. For more information regarding this process please contact:

Elizabeth Baxter, Transportation Coordination Planner  
Miami Valley Regional Planning Commission  
937-531-6568  
ebaxter@mvrpc.org

## 2021 ANNUAL REVIEW

Beginning in 2021 ODOT will no longer require updates to the locally developed, coordinated public transit-human services transportation plans for those counties included in a region. The Regional Coordinating Agency will serve as the lead to ensure each of the county coordinated planning committees participates in the regional coordinated planning process.

A meeting was held with each county to evaluate the local unmet needs, review progress of plan goals and strategies, and update agency provider information. Upon completion of the local review, the GRMI Advisory Committee performed an assessment of the regional unmet needs and goals to determine if changes were necessary. Furthermore, the GRMI Council evaluated the initial SWOT Analysis conducted in 2018 to assess the progress of the Greater Region.

Below is a summary of plan reviews and changes:

1. The RCA reviewed the geographic and population demographics of the region and determined there were no significant changes.
2. A review of each agency with interest in local transportation was performed. Both the agency characteristics and vehicle inventory were updated. An in depth review of this information can be found on the RCA's website at: <https://www.mvrpc.org/transportation/services-non-drivers/greater-regional-mobility-initiative>
3. The GRMI Council acknowledged the need for more structure within the larger council. As such the GRMI Council established a committee to assist with updating and revising the coordinated plan, provide insight on best practices and offer input on statewide and regional initiatives. The committee became known as the GRMI Advisory Committee. Information on how this group was established and its make up can be found in Chapter 5: Roles, Updates, and Funding structure beginning on page 90.

For a full list of committee members please visit the RCA's website at <https://www.mvrpc.org/transportation/services-non-drivers/greater-regional-mobility-initiative>.

4. Each county transportation coordination planning committee within the region worked to review goal and strategies of the regional plan as well as the county unmet needs. The unmet needs were discussed in detail and determinations were made as to the accuracy and relevance of the unmet needs.

Some changes were identified as needed in the following counties:

## Champaign County Updated Unmet Needs

1. Out of county travel
2. Coordination between counties
3. Early, evening and weekend hours and scheduling sameday and furture trips

## Clark County Updated Unmet Needs

1. After hours transportation options, including weekends
2. Public information (PI) (expand on PI utlizing additional methods of delivery
3. Additional funding (expand reserach including considerations for non-traditional sources)
4. County-wide and cross county transportation options
5. Create HSTC Service Collaboration sub-committee

## Shelby County Updated Unmet Needs

1. Driver shortage
2. Additional hours for early morning, evening, and holidays to accommodate chronic medical treatments and same day request
3. Transportation for employment and non-medical trips; Education of Shelby County residents regarding public and coordinated transportation
4. Affordable out of county services
5. Additions were also made to some of the local HSTC Council Planning Committee. For a full list of planning committee participants for the local and regional planning committees please see Appendix E: List of Planning Committee Participants.

The additions are as follow:

**Champaign County Planning Committee Participants**

Carolyn Young-Mercy Health

**Clark County Planning Committee Participants**

Logan Cobbs-City of Springfield

Carolyn Young-Mercy Health

Ashley Seibert-Clark County Combined Health District

Harold Frost-Clark County Resident

**Darke County Planning Committee Participants**

Joy Bowers-DaVita

Scott Warren-Family Health Services of Darke County

Katherine Claz-Family Health Services of Darke County

Erin Kies-Greenville Transit Systems

Joseph Badell-Darke County Board of Developmental Disabilities

Mike Bowers-Darke County Economic Development

Jordan Francis-Wayne Healthcare

Tricia Alloway-SafeHaven

Heather Robison-Catholic Social Services

Roxann Bickel-Darke County ESC

Jody Haser-Greenville City Schools

**MPO Planning Committee Participants (Greene, Miami, Montgomery)**

Bob Ruzinsky-Greater Dayton RTA

Sarah Baker-Miami Public Transit

Maria Wogoman-Goodwill Easter Seals

Bruce Williams-Goodwill Easter Seals

Anne Lewis-Opportunities for Ohioians with Disabilities

Jennifer Giessler-City of Kettering

Georgeann Godsey-Harrison Township

Paul Gruner-Montgomery County Engineers Office

Mark Schlater-Toward Independence

Melody Burba-Access Center for Independent Living

**Preble County Planning Committee Participants**

Erin Harris-Preble County Job & Family Services

Maria Morgan-Preble County Board of Developmental Disabilities

Bethany Shultz-Preble County Board of Developmental Disabilities

Shawn Hoff-Preble County ESC

Amy Rayne, Preble County Mental Health and Recovery Board

**Shelby County Planning Committee Participants**

Heather Robison-Catholic Social Services

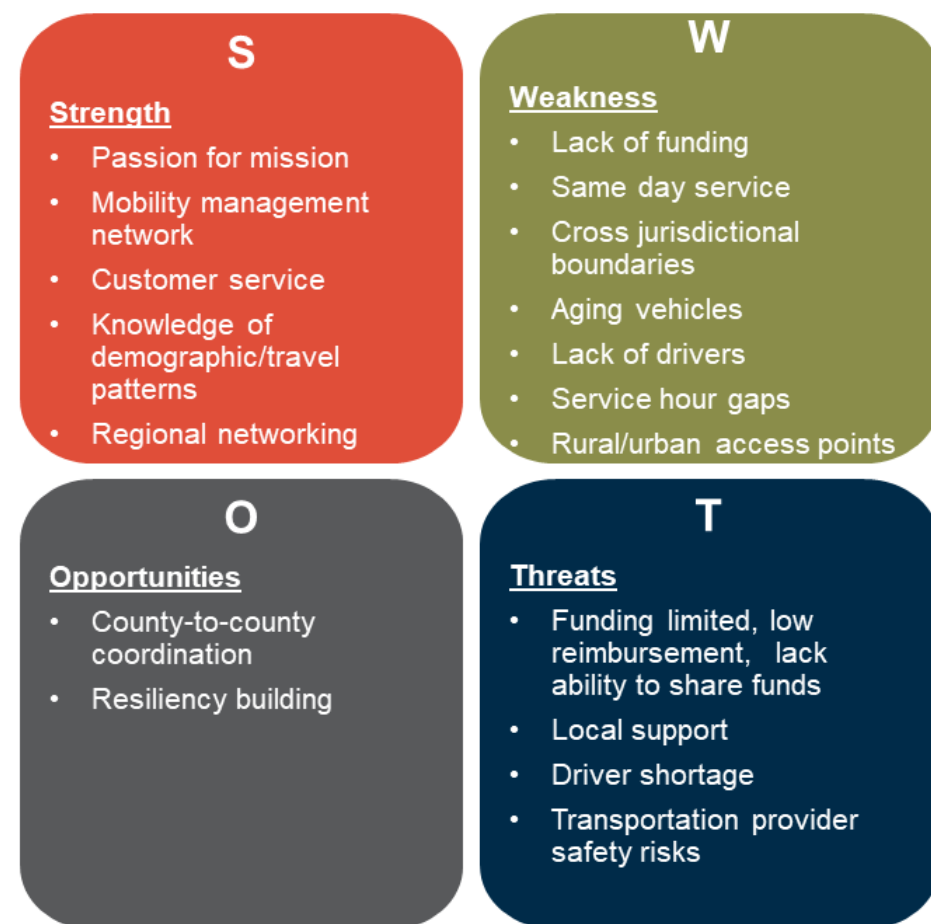
Chris North-Shelby County Veteran Services

Erin Meyer-Catholic Social Services

Jon Crusy-City of Sidney

6. The GRMI Council met to review the regional SWOT Analysis created in 2018 which was used to establish the initial GRMI Plan goals and strategies. Some changes were identified from the original analysis including recommendations of moving characteristics from one category to another, the removal of some characteristics as well as adjustments to language of characteristics to be more reflective of the region.

No changes will be made to the goals and strategies in the regional plan based on the updated SWOT Analysis. The GRMI Council will review the SWOT Analysis next year to determine if further refinement is needed and the GRMI Advisory Committee will recommend if the goals and strategies should be adjusted. The original SWOT Analysis can be reviewed in Chapter 4: Goals and Strategies page 73.



**Figure AE: 2021 Review of SWOT Analysis**

Source: MVRPC

The GRMI Advisory Committee met after review of the local level was complete. The committee evaluated the data and discussed the regional unmet needs. It was determine the region's unmet needs are still reflective of the region and no changes are needed.

Additionally, the GRMI Advisory Committee reviewed the goals and strategies to determine if the region is on target to meet the goals. Evaluation of this information can be found in Chapter 4: Goals and Strategies beginning on page 71. A more in depth assessment can be found on the RCA's website in the document labeled Regional Plan Goals and Strategy Progress.

<https://www.mvrpc.org/transportation/services-non-drivers/greater-regional-mobility-initiative>

## 2021 AMENDMENTS

Per the ODOT Office of Transit guidance for Coordinated Public-Transit Human Services Transportation Planning documents, a formal amendment is required for the following changes:

- if a review of unmet needs results in chagne to the needs inclucing the removal or additional of needs
- the prioritization of needs changes
- significant changes to the plan goals and strategies

As noted during the local review of unmet needs some counties identified changes. The RCA and ODOT Office of Transit determined not all counties included in Region 2 would be required to acknowledge the changes through a formal amendment rather only those impacted by changes.

The RCA worked with the following counties through the Boards of County Commissioners (BOCC) to approve a formal amendment outlining the changes:

- Champaign County
- Clark County
- Shelby County

Furthermore, the Miami Valley Regional Planning Commission Board of Directors acknowledged the adjustments to the impacted counties through a resolution.

Each BOCC provided a letter of support to the RCA approving changes to the county unmet needs. The original unmet needs for each county were included in the regional coordinated transportation plan in 2018 when the plan was first being drafted. Unmet needs had not been revisited at the local level since that time. A review was necessary to determine if the needs were still reflective of the local environment. These changes will allow the individual counties to focus on improving services and becoming more aligned with the Greater Region.


Date of Amendment adoption: December 2021

Copies of the updated regional coordinated public-transit human services transportation plan were provided to each member of the GRMI Council electronically, the updated plan was included on the RAC's website, and ODOT Office of Transit was provided a copy of the plan with changes.



COMMISSIONERS

BOB E. CORBETT  
STEVEN R. HESS  
TIM CASSADY



CLERK/Administrator

ANDREA MILLICE

1512 SOUTH U.S. HIGHWAY 68  
SUITE A100  
URBANA, OHIO 43078  
(937) 484-1611

BOOKKEEPER/CLERK/RECEPTIONIST

NATALIE RANDELL

October 4, 2021

Brian O. Martin, AICP  
Executive Director  
Miami Valley Regional Planning Commission  
10 North Ludlow Street, Suite 700  
Dayton, Ohio 45402

Dear Mr. Martin,


The Board of County Commissioners of Champaign County offers support and acknowledges changes in the Greater Region Transportation Coordination Plan to the local unmet needs for Champaign County.

As part of the annual plan review process, Champaign County Transportation Coordination Planning Committee met and reviewed the unmet transportation needs. The existing unmet needs for Champaign County were drafted in 2018 for inclusion in the Greater Region Transportation Coordination Plan. Unmet needs had not been revisited at the local level since that time. The Champaign County Transportation Coordination Planning Committee determined during their review that some original needs should be revised, removed, and/or new needs added to be more reflective of the local environment. These changes will allow Champaign County to focus on improving services and becoming more aligned with the Greater Region.

Champaign County requests that the updated needs be incorporated by MVRPC, as the Regional Coordinating Agency, as you complete the 2021 Greater Region Transportation Coordination Plan update.

Champaign County is committed to continued investment in regional transportation coordination in order to move the Greater Region forward and increase access in mobility.

Sincerely,



Steven R. Hess, President  
Champaign County Board of County Commissioners  
Champaign County, Ohio

Placeholder Image for Clark Letter of Support



**SHELBY COUNTY  
BOARD OF COUNTY COMMISSIONERS**  
129 East Court Street Suite 100  
Shelby County Annex Building  
Sidney, Ohio 45365  
(937) 498-7226  
Fax No. 498-1293  
[Shelbycountycommissioners@shelbyco.net](mailto:Shelbycountycommissioners@shelbyco.net)

ANTHONY J. BORNHORST  
  
JULIE L. EHEMANN  
  
ROBERT A. GUILLOZET  
  
PAMELA STEINKE, Clerk of the Board

October 7, 2021

Brian O. Martin, AICP  
Executive Director  
Miami Valley Regional Planning Commission  
10 North Ludlow Street, Suite 700  
Dayton, Ohio 45402

Dear Mr. Martin,

The Board of County Commissioners of Shelby County, Ohio offers support and acknowledges changes in the Greater Region Transportation Coordination Plan to the local unmet needs for Shelby County.

As part of the annual plan review process, the Shelby County Transportation Coordination Planning Committee met and reviewed the unmet transportation needs. The existing unmet needs for Shelby County were drafted in 2018 for inclusion in the Greater Region Transportation Coordination Plan. Unmet needs had not been revisited at the local level since that time. The Shelby County Transportation Coordination Planning Committee determined during their review that some original needs should be revised, removed, and/or new needs added to be more reflective of the local environment. These changes will allow Shelby County to focus on improving services and becoming more aligned with the Greater Region.

Shelby County requests that the updated needs be incorporated by MVRPC, as the Regional Coordinating Agency, as you complete the 2021 Greater Region Transportation Coordination Plan update.

Shelby County is committed to continued investment in regional transportation coordination in order to move the Greater Region forward and increase access in mobility.

Sincerely,

Board of County Commissioners  
Shelby County, Ohio

  
Anthony J. Bornhorst

  
Julie L. Ehemann

  
Robert A. Guillozet



## RESOLUTION TO ADOPT THE GREATER REGION TRANSPORTATION COORDINATION PLAN ANNUAL REVIEW AND PLAN AMENDMENT

**WHEREAS**, the Miami Valley Regional Planning Commission is the designated Metropolitan Planning Organization (MPO) by the Governor acting through the Ohio Department of Transportation in cooperation with locally elected officials for Greene, Miami, and Montgomery Counties including the jurisdictions of Carlisle, Franklin, Springboro and Franklin Township of Warren County; and

**WHEREAS**, the Miami Valley Regional Planning Commission (MVRPC) was named by the Governor of Ohio as the Designated Recipient for the Enhanced Mobility for Senior and Individuals with Disabilities program (Section 5310) for the Dayton Urbanized Area; and

**WHEREAS**, The Fixing America's Surface Transportation Act (FAST) Act regulations require that each area receiving funding create a locally developed Coordinated Public Transit-Human Services Transportation Plan and update that plan regularly prior to the award of Section 5310 funds; and

**WHEREAS**, Ohio Department of Transportation, Office of Transit, is working to regionalize transportation coordination across the state and needs to work with experienced partners in delivering effective coordination and planning of transportation and transit services; and

**WHEREAS**, ODOT and MVRPC entered into an agreement in which funding the project elements in the SFY2022 Transportation Budget and Work Program was approved to implement the Greater Miami Valley Region Transportation Coordination Plan; and

**WHEREAS**, MVRPC followed the ODOT Office of Transit Coordinated Public Transit-Human Services Transportation Plan annual review guidance for the GRMI Plan;

**NOW, THEREFORE, BE IT RESOLVED** that the Board of Directors of the Miami Valley Regional Planning Commission hereby adopts the above-referenced Greater Miami Valley Region Transportation Coordination Plan amendments contained therein.

**BY ACTION OF THE** Miami Valley Regional Planning Commission's Board of Directors.

---

Brian O. Martin, AICP  
Executive Director

---

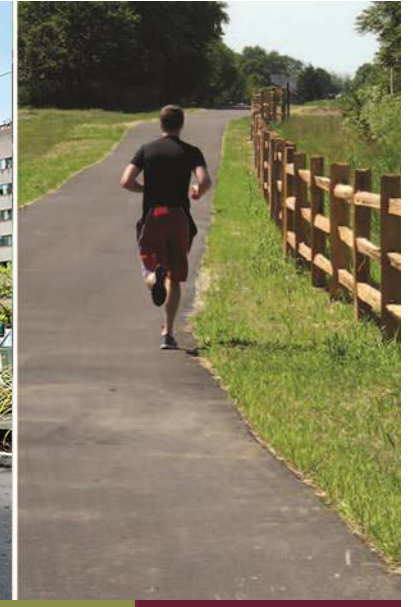
Chris Mucher, Chairperson  
Board of Directors of the  
Miami Valley Regional Planning Commission

---

Date







# Wayne Lakes FPA Amendment

Matt Lindsay



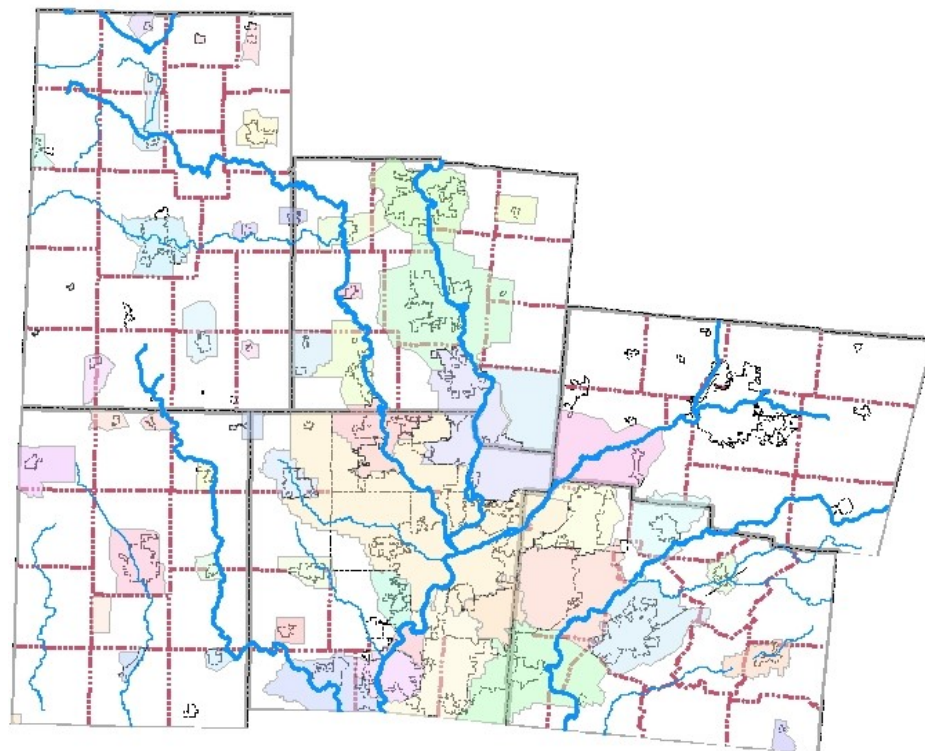


# Background



## Water Quality Planning at MVRPC

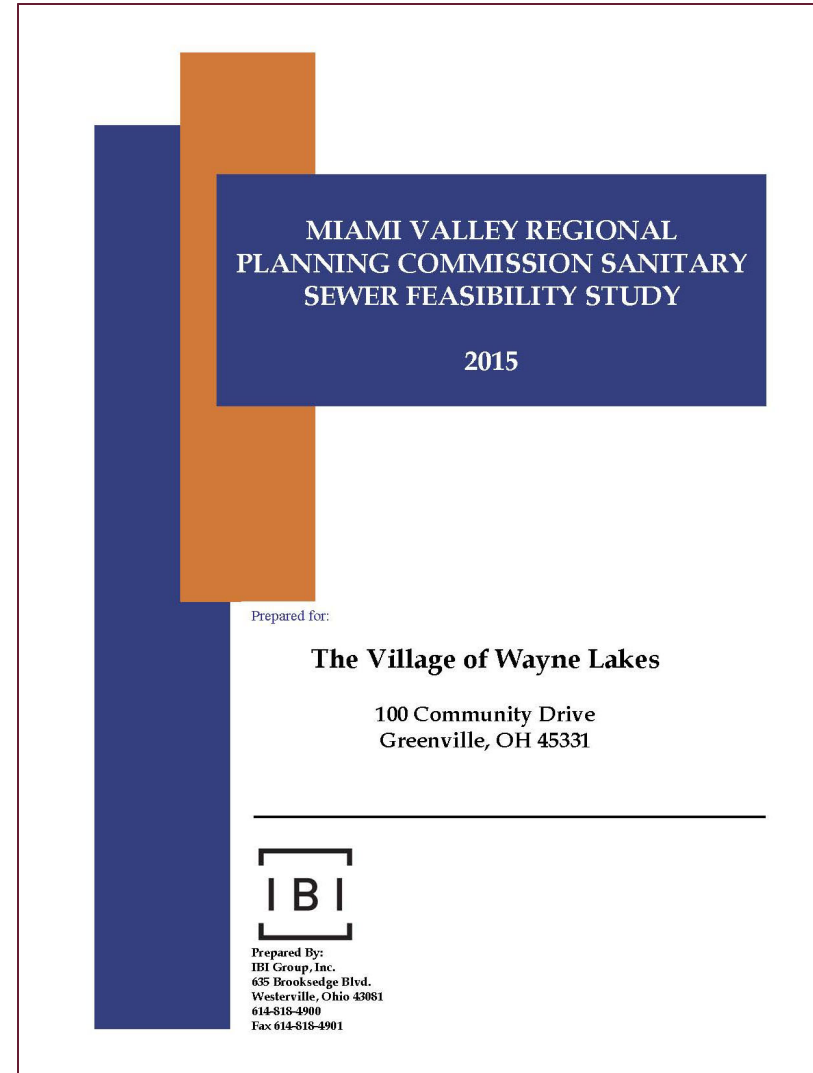
- Designation from the Governor
- Under contract with Ohio EPA
- All five RPC counties
- AWQMP
  - Main planning topic: regional wastewater treatment planning



# Unsewered Communities Project – 2014-15



- Assistance to five communities to develop general plans for sanitary sewers.
  - **Wayne Lakes**
  - **Ludlow Falls**
  - Jackson Twp.
  - Glenwood
  - Bowersville



## Village of Wayne Lakes

---

- Proceeding with development of sanitary sewers for the village.
- Updates to plan developed in 2015:
  - Cost updates
  - Partnership with New Madison



## Current Progress



### Technical

- Plan revisions & detailed design
- Project team including Village, County, RCAP, Ohio EPA

### Finance

- Billing system established
- Funding applications submitted – two awarded!

### Admin.

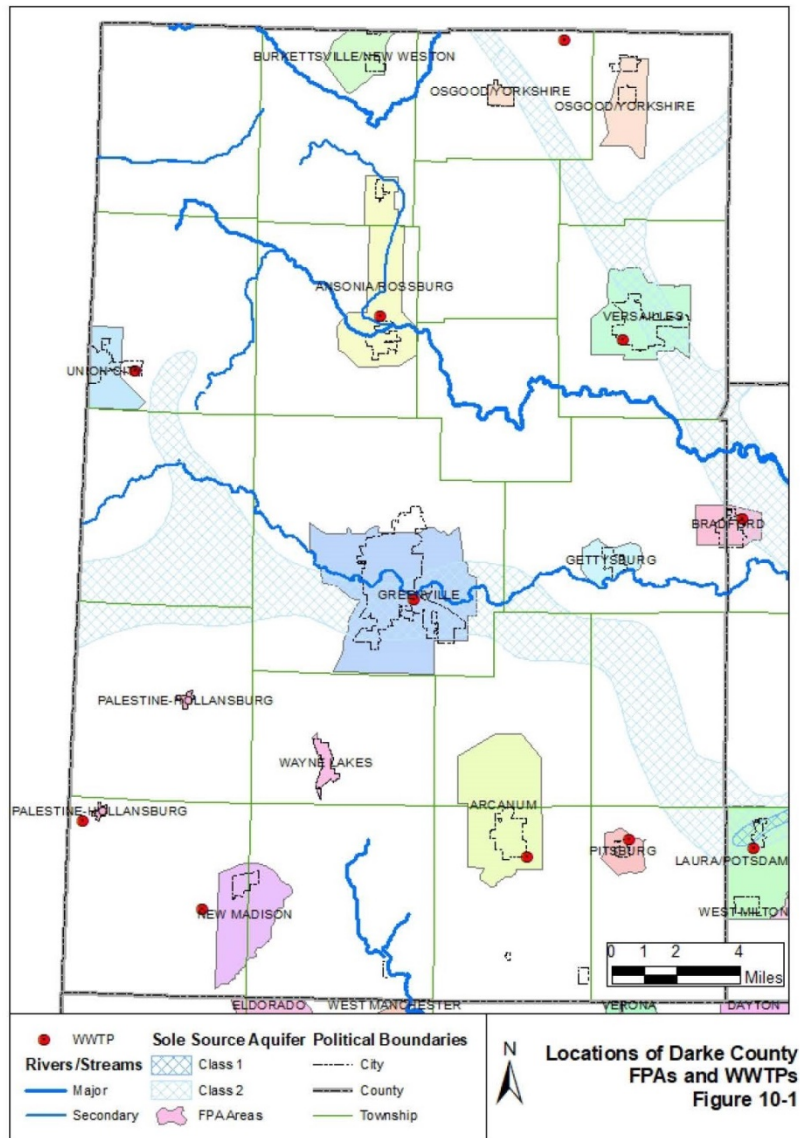
- Permit to Install application submitted
- Agreement with New Madison in the works





# **Proposed AWQMP Amendment**

# Reflecting local decisions in the Regional Plan



## The AWQMP:

- Guides Ohio EPA permit decisions
- Signals land use planning to the development community

Maps and text in the AWQMP need to include the decisions made for Wayne Lakes.

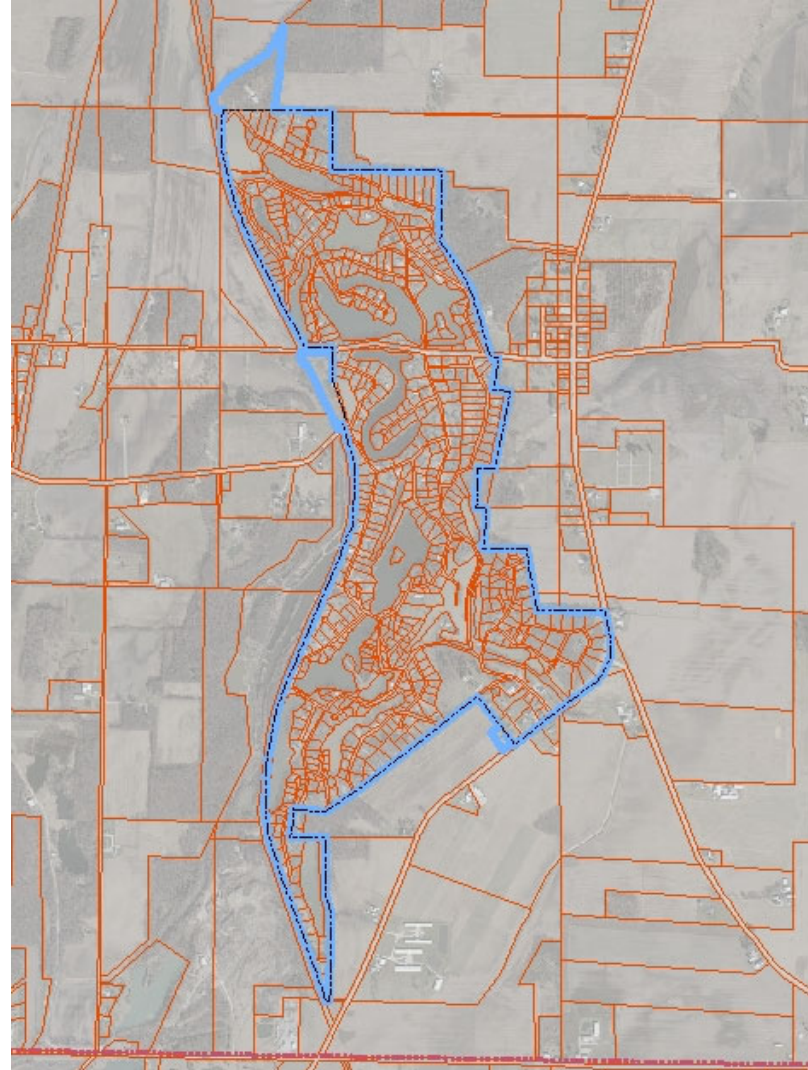




## Facility Planning Area

---

- FPA: the area for which the DMA will have primary responsibility for wastewater collection and treatment
- DMA: Designated Management Agency – in this case, the Village



## Text Updates

---

Adds Wayne Lakes as an FPA and DMA and lists agreement with New Madison as Satellite Agreement.

Also updates narrative about Wayne Lakes as an HSTS area of concern.

- Chapter 10
- Appendix A: Darke County





# Public Involvement

## 30-Day Comment Period

---

- October 25 through November 23
- Public Meeting:  
November 15, 2021  
from 6:30 to 8:00 p.m.
  - In Wayne Lakes
- All meeting materials also available at the MVRPC offices and [mvrpc.org](http://mvrpc.org)



*2015 Public Meeting, Wayne Lakes*



## Public Comment Summary

---

A complete Public Involvement Summary will be developed at the conclusion of the comment period.

- Meeting materials
- Public Notices
- All comments received, and responses to comments



## Conclusion

---

There is a resolution in the packet. Staff recommends forwarding this resolution to the Board for adoption.

Thank you.

**Matt Lindsay**

**Manager, Environmental Planning**

**[mlindsay@mvrpc.org](mailto:mlindsay@mvrpc.org)**

**937.531.6548**





November 18, 2021

From: MVRPC Staff  
To: MVRPC Technical Advisory Committee and Board of Directors  
Subject: Proposed Amendment to the Areawide Water Quality Management Plan for the Village of Wayne Lakes, Darke County

This memorandum and accompanying proposed resolution support the proposed update to the Areawide Water Quality Management Plan for the Miami Valley related to a project to construct sanitary sewers for the Village of Wayne Lakes, Neave Township, Darke County.

#### Background

Under designation from the governor of Ohio, MVRPC conducts water quality planning work on behalf of the Ohio EPA in all five of our Regional Planning Commission counties. This work focuses on maintenance of the Areawide Water Quality Management Plan (AWQMP) and engagement with stakeholders to that plan. The core of the AWQMP is our work on regional wastewater treatment planning. The AWQMP includes a map of wastewater Facility Planning Areas (FPA) and the text of the plan designates management agencies responsible for wastewater planning within the various FPA. The plan also lists generic wastewater treatment prescriptions, as well as specific prescriptions for FPA where the management agency so desires.

In 2014 and 2015, MVRPC partnered with IBI Group for the Unsewered Communities Project. Ultimately, five communities participated in this effort to develop general plans for sanitary sewers for areas where concentrations of older home sewage treatment systems ("septic systems" or HSTS) combined with small lot sizes indicated future replacement of the HSTS would be difficult, or indeed impossible, under updated Ohio Department of Health rules for new HSTS. These plans were developed with sufficient detail to be used as support for future funding applications for sanitary sewer projects. The Village of Wayne Lakes was one of the participating communities, and the resulting report is available on the MVRPC web site.

Ongoing conversation and decision-making within the Village of Wayne Lakes has resulted in a commitment by the village to pursue funding and, if successful, construct a wastewater collection system and enter into an agreement with a nearby community, the Village of New Madison, for wastewater treatment. The Village of Wayne Lakes has submitted several funding applications as well as applied for a permit to install for the collection system through Ohio EPA. In mid-October, it was announced that Wayne Lakes had been awarded a \$500,000 H2Ohio grant to contribute to the funding plan for this project. As a consequence of these steps, it is necessary to reflect these local decisions with in the text of the AWQMP and on the map of FPA maintained by MVRPC. That is the purpose of this proposed amendment.

### The Proposed Amendment

Attached to this memo are excerpts from the AWQMP from Chapter 10 and Appendix A that are proposed to be updated through this amendment. Changes to the text are shown using red text and ~~striketrough~~ indicating additions and deletions, respectively. **The changes to the text are strictly to reflect the addition of a new FPA for the Village of Wayne Lakes and to list the village itself as the Designated Management Agency (DMA) for the new FPA.** The text additions also reflect the decision to partner with New Madison for wastewater treatment services, creating a new Satellite Agreement between the two DMAs. Other edits include the Palestine-Hollansburg FPA in Darke County tables

Also attached is a map depicting the proposed boundary for the Wayne Lakes FPA. The proposed boundary matches the village corporate boundary plus the addition of three contiguous parcels that are not within the village but will be served by the proposed wastewater collection system. This proposed boundary was developed in consultation with the Wayne Lakes Sewer Committee in meetings in summer 2021.

### Public Involvement Process

As required for an AWQMP amendment, MVRPC is conducting a full 30-day comment period and holding a public meeting to allow for interested parties to comment on the proposed update. The comment period opened on October 25, 2021 and closes on November 23, 2021. The public meeting, to be held in the village offices in Wayne Lakes is scheduled for November 15, 2021 from 6:30 to 8:00 p.m. All materials presented at the public meeting are also available to view from the MVRPC web site:

[mvrpc.org/unsewered-communities#wayne](https://mvrpc.org/unsewered-communities#wayne).

A full public involvement summary, including proofs of public notice, all meeting exhibits, and all comments and feedback received will be developed as a part of the full amendment package.

The Areawide Facility Planning Subcommittee was sent specific invitations to review and comment upon the amendment text as well as the proposed FPA map. MVRPC staff decided there was not a need to hold a specific AFPSC meeting for the single topic of a new, isolated FPA for a single jurisdiction. Comments received from AFPSC participants will be indicated as such within the Public Involvement Summary.

### Recommendation

MVRPC staff recommends adoption of the amendment as presented, including text updates and the new FPA for the Village of Wayne Lakes.





## RESOLUTION AMENDING THE AREAWIDE WATER QUALITY MANAGEMENT PLAN FOR A NEW RURAL SANITARY SEWER SYSTEM

**WHEREAS**, the Miami Valley Regional Planning Commission is the Designated Planning Agency (DPA) for Water Quality Management Planning within the Miami Valley Region pursuant to Section 208 of the Federal Water Pollution Control Act Amendments of 1972 (P.L. 92-500) and 1977 (P.L. 95-217); and

**WHEREAS**, in fulfillment of its responsibilities as the DPA, MVRPC has prepared the 208 Areawide Water Quality Management Plan, and administers said Plan within its designated five-county water planning jurisdiction, including Greene, Montgomery, Miami, Preble, and Darke Counties, Ohio; and

**WHEREAS**, it is periodically necessary to amend said Plan to incorporate pertinent and appropriate modifications; and

**WHEREAS**, a proposed new rural sanitary sewer system to serve the Village of Wayne Lakes necessitates the creation of one new Facility Planning Area and text modification of the Plan; and

**WHEREAS**, the following amendment, herein known as the 2021 Amendment, has been proposed for the Areawide Water Quality Management Plan:

1. New Facility Planning Area for the Village of Wayne Lakes in Darke County
2. Updates to Chapter 10 and Appendix A: Darke County

**NOW, THEREFORE, BE IT RESOLVED** that the Board of Trustees of the Miami Valley Regional Planning Commission hereby adopts the above-referenced 2021 Amendment to the Areawide Water Quality Management Plan and recommends its certification by the State of Ohio.

**BY ACTION OF THE** Miami Valley Regional Planning Commission's Board of Directors.

---

**Brian O. Martin, AICP**  
Executive Director

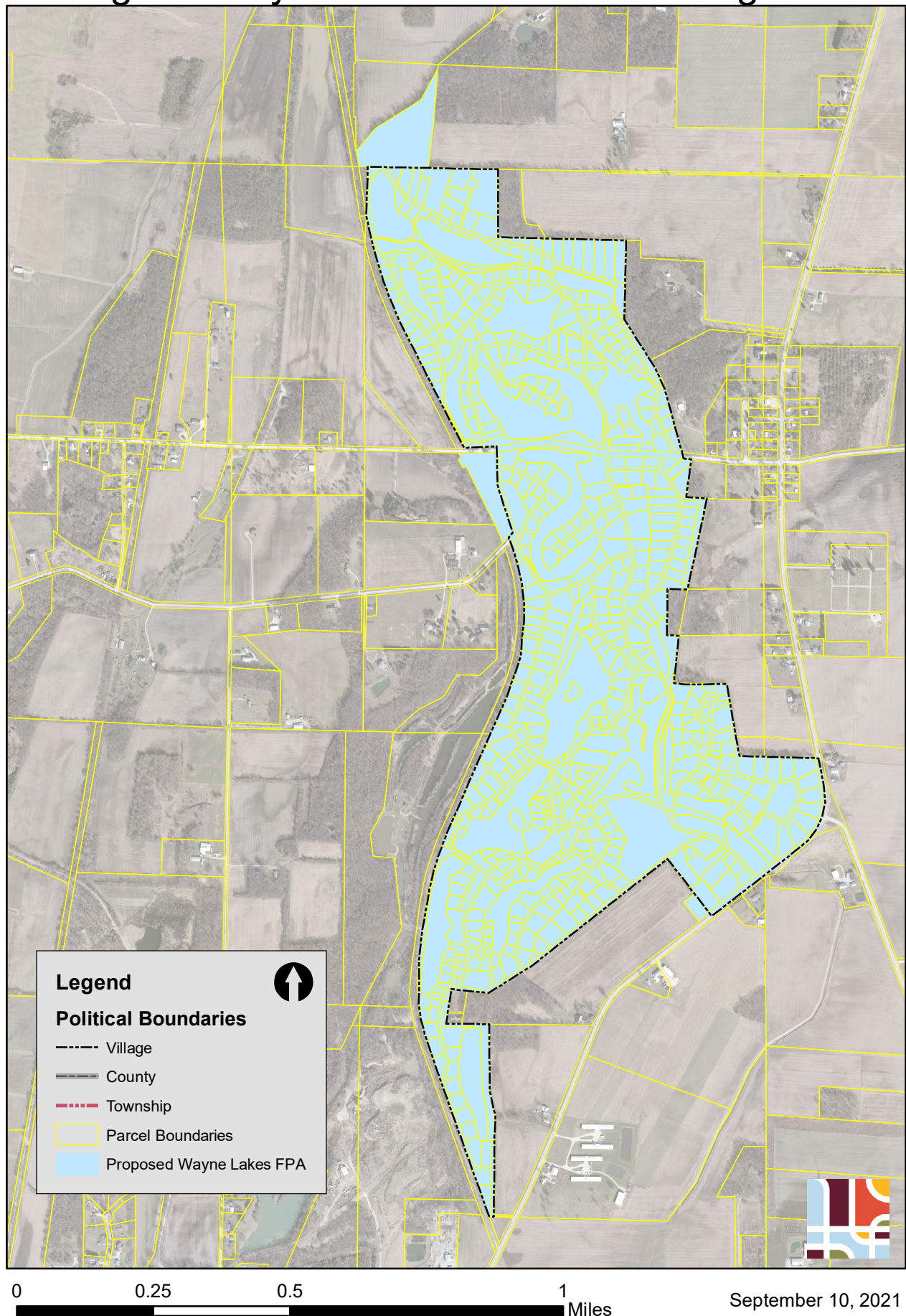
---

**Chris Mucher, Chairperson**  
Board of Directors of the  
Miami Valley Regional Planning Commission

---

Date

# Proposed Facility Planning Area Map Village of Wayne Lakes and Surrounding Area



## 10.0 Wastewater Collection and Treatment Systems Planning

---

Wastewater Treatment Facility Plans and their associated Facility Planning Areas are the cornerstones of the AWQMP. In response to Ohio EPA directives, the Planning Commission has updated the wastewater treatment-related portions of the AWQMP to ensure that current and future wastewater treatment needs are met in ways that are protective of the region's water resources. The update process is undertaken with the following objectives:

1. Provide a regional inventory of the agencies responsible for wastewater treatment, planning areas, and surface water quality protection facilities and infrastructure;
2. Define regional policies to guide future wastewater infrastructure planning and development; and
3. Identify, evaluate, prioritize and recommend future water quality improvement projects intended to help surface water bodies attain Ohio EPA intended use designations.

This section provides a summary of the policies adopted by the Planning Commission to review and approve updates to Wastewater Treatment Facility Plan and modifications to Facility Planning Areas, as well as the requirements for completing and submitting planning documents.

### 10.1 WASTEWATER FACILITY PLANNING

On September 1, 2005, MVRPC Board of Directors adopted the following Areawide Wastewater Facility Planning Policies (see **Appendix N**):

Policy A: Designated Management Agencies

Policy B: Facility Planning Area Boundaries

Policy C: Modifications to Facility Planning Area Boundaries

Policy D: Development of Local Wastewater Management Options

Policy E: AWQMP Consistency Reviews

Policy F: Utilization of Areawide Population Projections

Policy G: Modifications to Designated Management Agencies

Policy H: Nomination of New Designated Management Agencies

The MVRPC document entitled: *Guidelines for Facility Plan (FP) and Facility Planning Area (FPA) Update Proposals: Content, Submittal & Review* is presented in **Appendix O**. This guidance document provides detailed instructions on what information is required for a FP and in what format the GIS mapping of FPAs must be provided.

#### 10.1.1 Designated Management Agencies

As defined in Policy A, owners and operators of publicly owned WWTPs (WWTPs, aka Publicly Owned Treatment Works or POTWs) are identified as *Designated Management Agencies*



(DMAs). Primary DMAs are the entities responsible for the planning, construction, operation and maintenance of WWTPs and collection systems. Satellite DMAs are the entities responsible for sanitary sewers, lift stations, and sometimes treatment facilities tributary to a primary DMA's collection and/or treatment systems. Satellite DMAs provide services that complement Primary DMA operations, usually pursuant to an agreement or contract between the entities.

Each primary DMA is responsible for developing and maintaining a *Wastewater Treatment Facility Plan* (FP, aka 201 Plan) that identifies and prescribes wastewater management options in a surrounding *Facility Planning Area* (FPA). These management options represent current and best understanding about where sewers will be extended and where areas will remain un-sewered over the twenty year planning period. The designation of DMAs reduces the potential for duplication of services and investment in infrastructure by preventing multiple (and potentially competing) treatment facilities from being planned or constructed in an FPA.

As prescribed by the Ohio EPA in the 2006 State WMP, County Commissioners (or a sewer district under ORC 6119) are responsible for sewage collection and treatment in unincorporated communities. Where sewers are not available, approval of individual home sewage treatment systems is the responsibility of the County Health Department or local health department.

There are currently sixty seven (67) recognized DMAs within the Miami Valley Region. Primary DMAs and associated FPAs are listed by county in **Table 10-1**.

**Table 10-1. Miami Valley Region Designated Management Agencies**

County	DMA	FPA(s)
Darke	Village of Ansonia	Ansonia/Rosburg
	Village of Arcanum	Arcanum
	Village of Burkettsville	Burkettsville/New Weston <sup>25</sup>
	Darke County	Darke County Unincorporated
	Darke County General Health District	
	Darke County SWCD	
	Village of Gettysburg	Gettysburg (satellite to Bradford)
	City of Greenville	Greenville
	Village of New Madison	New Madison
	Village of North Star	Osgood/Yorkshire/North Star
	Village of Osgood	Osgood/Yorkshire/North Star
	<a href="#">Palestine-Hollansburg Sewer District</a>	<a href="#">Palestine-Hollansburg</a>
	Village of Pittsburg	Pittsburg
	Village of Union City	Union City
	Village of Versailles	Versailles
	<a href="#">Village of Wayne Lakes</a>	<a href="#">Wayne Lakes</a>

<sup>25</sup> The FPA encompassing the Burkettsville/New Weston area of Darke County which drains to a WWTP located in Mercer County.

	Village of Yorkshire	Osgood/Yorkshire/North Star
<b>Preble</b>	Village of Camden	Camden
	Village of College Corner	College Corner <sup>26</sup>
	City of Eaton	Eaton
	Village of Eldorado	Eldorado
	Village of Gratis	Gratis
	Lakengren Water Authority	Lakengren
	Village of Lewisburg	Lewisburg
	Village of New Paris	New Paris
	Preble County	Preble County Unincorporated
	Preble County General Health District	
	Preble County SWCD	
	Village of Verona	Verona
	Village of West Alexandria	West Alexandria
	Village of West Elkton	West Elkton
	Village of West Manchester	West Manchester
<b>Miami</b>	Village of Bradford	Bradford
	Village of Covington	Covington
	Village of Laura	Laura/Potsdam/Ludlow Falls
	Miami County	Bethel Township, Fletcher, Southwest Bethel Township Service Area, Miami County Unincorporated, Tri-Cities
	Miami County Health District	Miami County Unincorporated
	Miami County SWCD	
	City of Piqua	Piqua
	Village of Pleasant Hill	Pleasant Hill
	City of Tipp City	Tri-Cities
	City of Troy	Troy
	Village of West Milton	West Milton
<b>Montgomery</b>	City of Brookville	Brookville
	Village of Carlisle	Franklin
	Clark County	Clark County Southwest Regional <sup>27</sup>
	City of Dayton	Dayton
	Dayton and Montgomery County Board of Health	Montgomery County Unincorporated
	City of Englewood	Englewood
	Village of Farmersville	Farmersville

<sup>26</sup> The College Corners FPA drains to a WWTP located in the state of Indiana.

<sup>27</sup> Clark County Southwest Regional Facilities Planning Area also includes area in Greene County



	City of Germantown	Franklin
	City of Huber Heights <sup>28</sup>	Tri-Cities
	City of Miamisburg	Miamisburg
	Montgomery County	Eastern Regional, Western Regional, Opossum Creek, Montgomery County Unincorporated
	Montgomery County SWCD	Montgomery County Unincorporated
	Village of New Lebanon	New Lebanon
	Tri-Cities North Regional Wastewater Authority	Tri-Cities
	City of Union <sup>29</sup>	Union
	City of Vandalia	Tri-Cities
	City of West Carrollton	West Carrollton
<b>Greene</b>	Village of Bowersville	Bowersville
	City of Fairborn	Fairborn
	Greene County	Sugarcreek <sup>30</sup> , Beavercreek, Cedarville, Clifton, Greene County Unincorporated
	Greene County Combined Health District	Greene County Unincorporated
	Greene County SWCD	
	Village of Jamestown	Jamestown
	City of Xenia	Xenia
	Village of Yellow Springs	Yellow Springs

Policy G, Modifications to DMAs, outlines the process to be followed and policies applicable to when the need arises to consider changes to DMA designations within an FPA or affected jurisdictions seek to challenge DMA decisions and/or designations.

All entities that are not designated as a DMA must apply to be considered for that status prior to applying for permits. Policy H: Nominations of New DMAs, provides the factors considered by MVRPC's AFPSC when reviewing new DMA applications as well and the process undertaken to complete the review.

## 10.2 FACILITY PLANNING PROCESS

The development of Wastewater Facility Plans and Plan Updates involves the identification of viable local wastewater management options or prescriptions for a specified facilities planning area. The State WQM Plan includes recommended wastewater facility planning guidelines for individual POTWs as shown in **Table 10-2**.

<sup>28</sup> Huber Heights is a city in Montgomery and Miami Counties

<sup>29</sup> Union is a city in Montgomery and Miami Counties

<sup>30</sup> Sugarcreek FPA extends into Montgomery and Warren Counties.

Each wastewater utility in the Miami Valley Region was encouraged to complete wastewater facility planning in accordance with these guidelines as part of the overall MVRPC 208 Plan Update Process. Due to the schedule for completing the countywide 208 Plan, individual utilities may not have completed each step in the recommended guidelines to develop the Facility Planning Area boundaries identified in this Plan.

**Table 10-2. State WQM Plan Facility Planning Guidelines**

<b>Steps</b>	<b>Materials Submitted in Facility Plan</b>
Delineate current service area	Provide up to date maps of the current sewer service areas with all trunk lines and pump stations shown.
Evaluate sewer system conditions	Identify needed improvements; provide cost estimates.
Evaluate need for additional sewer service area	Define a study area (FPA); delineate the geographic area that was evaluated relative to growth/development and the need for central sewers (provide on map).
Delineate projected service area	Forecast and map new areas expected to be sewered in the next 20 years (projected service area); provide cost estimates.
Develop prescriptions for wastewater treatment in areas without sewers	Evaluate options and select interim prescriptions for areas expected to be sewered within 20 years. Evaluate options and select permanent prescriptions for areas not expected to have sewers.
Evaluate wastewater treatment capacity	Itemize improvements, if any, to meet current needs (population now served) and provide cost estimates.
Determine future capacity need for treatment	Forecasts of population growth and other demands used to assess the treatment capacity needed in next 20 years.
Evaluate future wastewater treatment capacity options	Identify feasible alternatives, select most likely option(s); itemize improvements to meet future needs and provide cost estimates.
Develop general plan to implement improvements	Provide a capital improvement plan to finance necessary sewer and treatment upgrades; include a schedule for improvements (sewers and treatment plant); provide an operation and maintenance plan.
Qualify as Management Agency	Agree to provide services indicated in 201/208 plan; obtain written agreements with other governmental jurisdictions if service involves more than one jurisdiction.

### 10.2.1 Facility Planning Areas/Service Areas

As stated in its Water Quality Management Plan Framework, Ohio EPA defines a *Facility Planning Area* (FPA) as “A discrete geographical planning area of sufficient scope to allow for an analysis of various alternatives for the treatment and disposal of wastewater. An FPA established as part of the Section 201 construction grants program was a "study area" for determining the needs and cost effective methods of providing sewer service, and was not intended to equate to a service area. FPAs will continue to be viewed as study areas unless the applicable areawide planning agency establishes alternative definitions as part of the area's 208 plan update.”

The Framework defines a *Service Area* as “A discrete geographic area within which a specific governmental jurisdiction or other entity has the authority and major infrastructure needs in place (e.g., trunk sewer lines, lift stations, interceptors, treatment capacity) to provide for the collection and treatment of sewage. The collection and/or treatment of sewage may be provided through legally executed contracts for such services, or other forms of intergovernmental agreements deemed acceptable to the parties involved.”

In the Guidance for Preparing a Facility Plan, U.S.EPA states “The facility planning area for new wastewater treatment systems should be large enough to analyze the cost-effective alternative methods of waste transport, treatment, handling and disposal of sludge and treated effluent. It also should be large enough to analyze the environmental effects of alternatives, as required by the regulations.”

Service Area boundaries should reflect the anticipated growth in a particular jurisdiction over the 20-year life of the Plan. Such anticipated growth should be a realistic reflection of the future ability of the treatment plant to service all areas within the Service Area boundary. Service Area boundaries should not be so all encompassing as to place restrictive land use conditions on properties within the boundary, nor should they be so narrowly defined as to require frequent modification. ‘

The introduction to the Areawide Wastewater Facility Planning Policies adopted by MVRPC on September 1, 2005, states the following:

“The overlap of multiple FPAs will not be permitted in Facility Plan and FPA updates. The Facility Planning process is intended to provide an organized and efficient approach to wastewater treatment planning. Allowing the overlap of FPAs brings undue confusion and conflict to the process, in addition to potentially resulting in duplication of effort, unwise public expenditures on redundant infrastructure, and excess plant capacities.

DMA's may consider establishing a Primary-Satellite DMA relationship to resolve overlapping boundary issues.”

Neither the Facility Planning Policies nor Ohio EPA guidance forbids non-contiguous facility planning areas. Circumstances may arise in which a single facility serves multiple communities and the planning area may consist of separate, discrete areas.

A list of the satellite/service agreements in place in the Miami Valley Region is provided in **Table 10-3**.

**Table 10-3. Satellite/Service Agreements in the Miami Valley Region**

<b>Primary DMA</b>	<b>Satellite DMA/Agreement</b>
Village of Ansonia	Village of Rossburg
Village of Bradford	Village of Gettysburg
City of Dayton	Village of Phillipsburg, City of Vandalia
Clark County Sanitary Engineer	City of Huber Heights, Miami County (Brant Area and Phonton Bethel Township)
Greene County	Clark County (re: Clifton WWTP), City of Kettering (Eastern Regional WRF), and Montgomery County
Village of Jamestown	Greene County (Shawnee Hills)
Lakengren Water Authority	Preble County (Sanitary Landfill)
Miami County	Village of Casstown, Village of Fletcher, Village of Pleasant Hill, City of Tipp City, Tri-Cities North Regional Water Authority(southwest Bethel Township), City of Troy
City of Miamisburg	Montgomery County Environmental Services
<u>Village of New Madison</u>	<u>Village of Wayne Lakes (Wayne Lakes)</u>
City of Piqua	Brown Township (Miami County), Village of Fletcher (Miami County), Monnin Estates (Miami County), Greens of Springcreek & Piqua Country Club
Tri-Cities	City of Huber Heights, City of Tipp City, City of Vandalia
West Carrollton	Montgomery County Environmental Services (Western Regional)
City of Xenia	Central State University

Policy B, Facility Planning Area Boundaries, includes a prohibition of overlapping FPAs and a provision for actions to be taken when boundary conflicts arise. Policy C, Modifications to Facility Planning Area Boundaries, outlines the process for changing FPA boundaries.

MVRPC maintains the map of all FPAs in the region's five-county area. These maps are used by the Ohio EPA in determining where Permits-to-Install (PTIs) for new sewer lines may and may not be issued.

In addition to a comprehensive update of plan contents, the 208 Plan Update process included an opportunity for DMA agencies and jurisdictions to submit updates to Facility Planning Area maps for the consideration of the Facility Planning Subcommittee. The following FPA updates are submitted to be included in the updated regional Facility Planning Areas map:

- Ansonia
- Bethel
- Brookville
- Clark County Southwest Regional
- Eaton
- Fairborn
- Huber Heights
- Miamisburg

- New Paris
- Piqua
- Tri-Cities
- Troy
- Union
- Verona
- Xenia

Upon adoption of the updated 208 Plan by the MVRPC Board of Directors, these FPA boundaries will be incorporated into the master FPA map maintained by MVRPC.

The current (April 2011) Facility Planning Areas in the Miami Valley Region are shown in **Appendix P**. Facilities Planning Areas presented by County are that are shown in **Figures 10-1** through **10-5** as described in **Table 10-4**.

**Table 10-4. Facility Planning Area Maps by County**

County	Figure
Darke	10-1
Preble	10-2
Miami	10-3
Montgomery	10-4
Greene	10-5

**Table 10-5** provides current FPA statistics within each County. FPAs are considered for this discussion to be the boundaries of those POTWs that have distinctive service area boundaries.

**Table 10-5. Current Facility Planning Areas within the Miami Valley Region<sup>31</sup>**

County	Number of FPAs	Area within FPA (sq. mi.)	Total Area in County (sq. mi.)	% County Area within FPA
Darke	<del>40</del> <u>13</u>	<del>55</del> <u>63</u>	600	<del>9.2</del> <u>10.6</u>
Greene	9	198	416	47.5
Miami	8	180	410	44.0
Montgomery	13	354	465	76.0
Preble	11	45	427	10.6
<b>Total</b>	<del>51</del> <u>54</u>	<del>832</del> <u>840</u>	<b>2,318</b>	<del>35.9%</del> <u>36.2%</u>

### 10.2.2 Population Projections

Policy E, Utilization of Areawide Population Projections, specifies that FP applicant's population projections must be consistent with MVRPC population projections as described in Section 3.1.

In 2013 MVRPC staff developed FPA-based population projections using 2010 Census figures and transportation planning data developed by the Ohio Department of Transportation and by the MVRPC Long Range Transportation Planning process. Population projections for 2040 were

<sup>31</sup> The difference in the number of DMAs and FPAs are due to Preble County Sanitary Districts No. 2 and 3 not having identified FPAs and the City of Xenia FPA being served by two WWTPs. Additionally, two DMAs are located within multiple counties.



plotted for each facility planning area, as a guide for management agencies planning for future collection system extensions and treatment works upgrades. The projections, map and methodology description are incorporated into this AWQMP as Appendix R.

### **10.2.3 Development of Local Wastewater Management Options**

The development of Wastewater Facility Plans and Plan Updates involves the identification of viable local wastewater management options or prescriptions. Policy D, Development of Local Wastewater Management Options, details the categories into which each FPA is to be subdivided according to the type of wastewater treatment in existence, proposed and/or predicted. This policy provides the mechanism for encouraging DMAs to amend engineering plans based on the desire of a local government to manage growth within its jurisdictions.

Figure 10-1. Darke County Facility Planning Areas

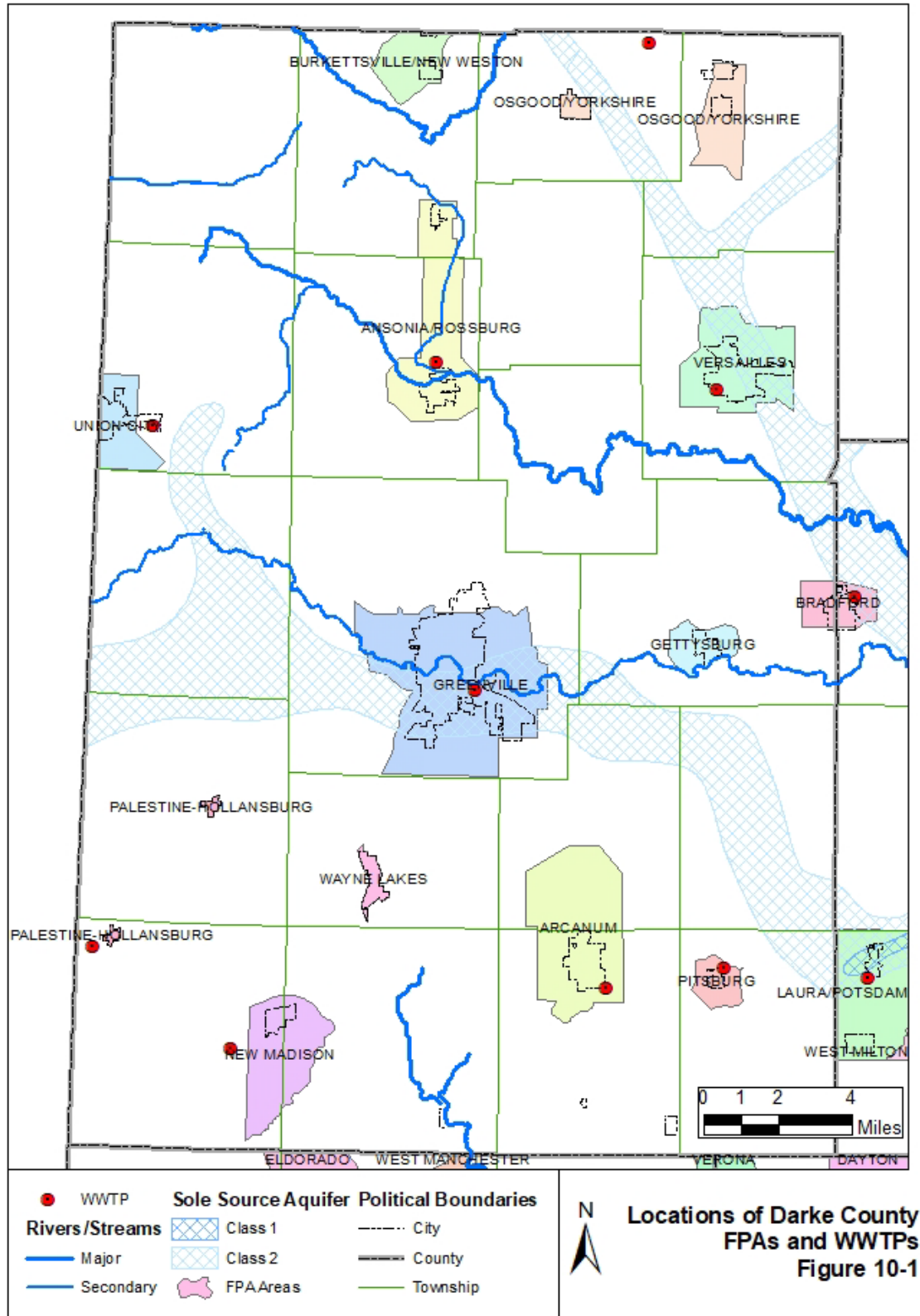


Figure 10-2. Preble County Facility Planning Areas

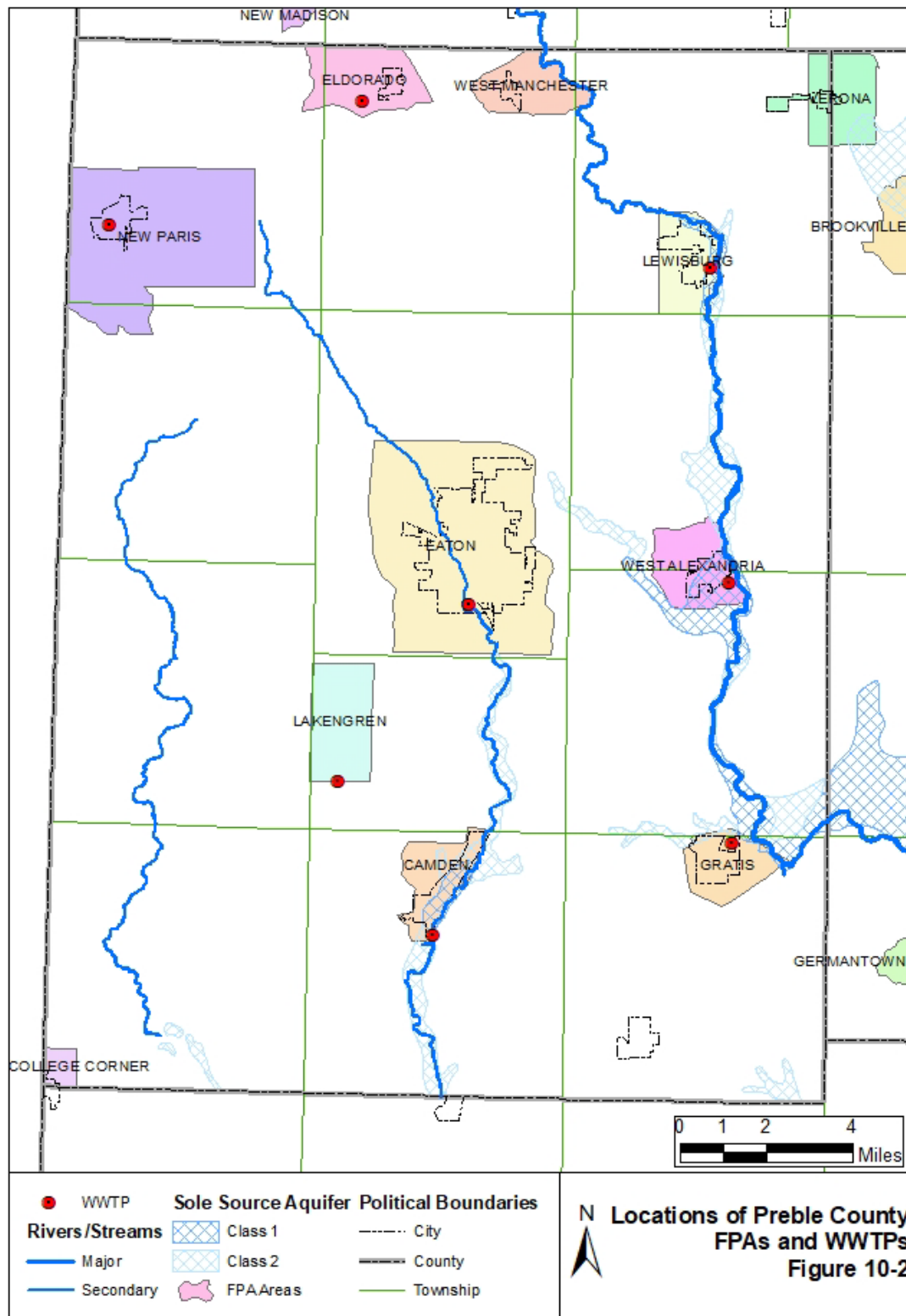


Figure 10-3. Miami County Facility Planning Areas

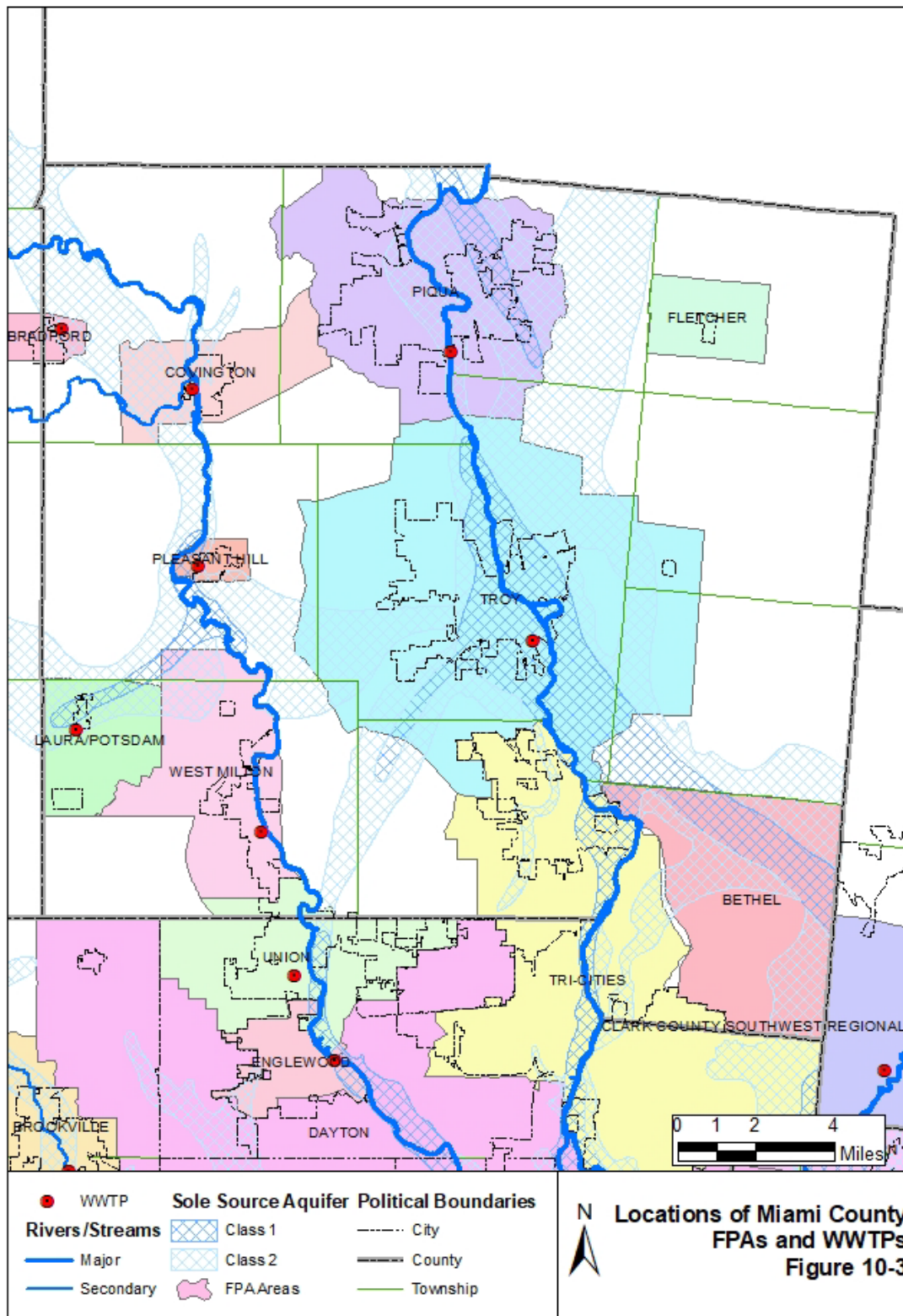
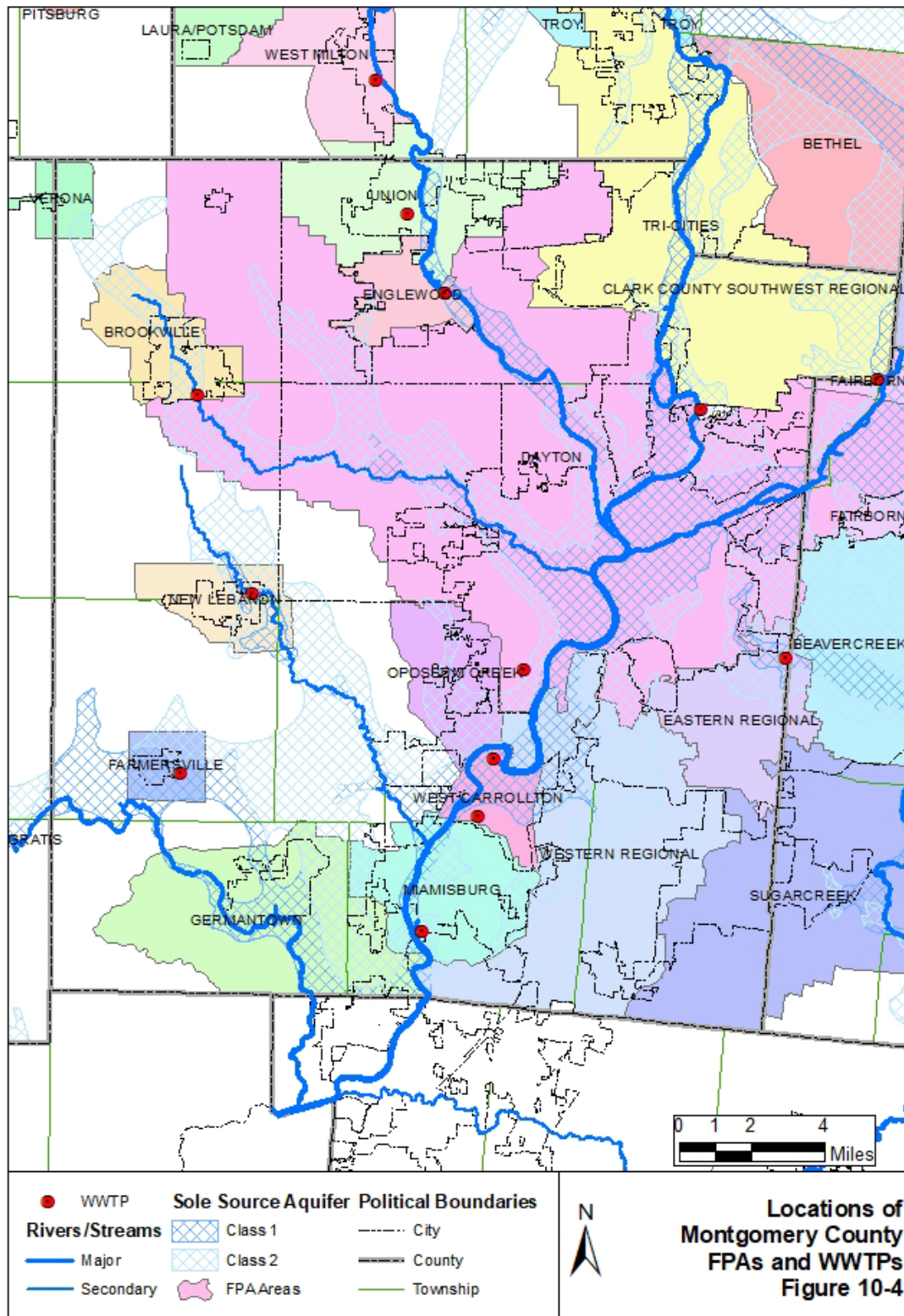
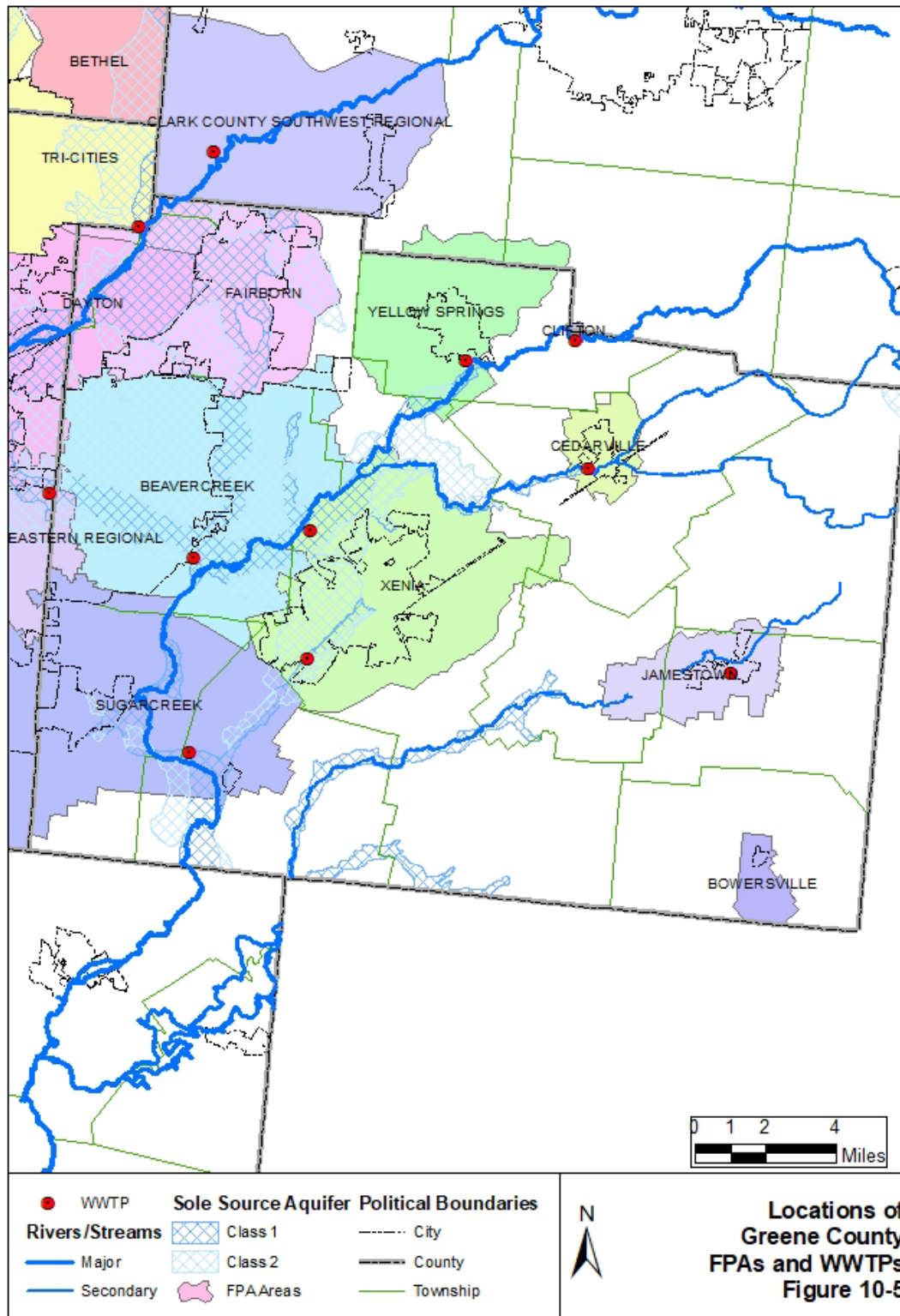


Figure 10-4. Montgomery County Facility Planning Areas





**Figure 10-5. Greene County Facility Planning Areas**



Additionally, the policy outlines the conditions that must be met in those areas where local officials want to restrict wastewater treatment to individual on-site systems.

This policy recognizes the legal responsibilities and authorities of local health departments to influence wastewater treatment options.

#### **10.2.4 AWQMP Consistency Reviews**

Policy E, AWQMP Consistency Reviews, outlines the process under which DMA actions are reviewed by MVRPC. As described in Policy E, any action proposed by a DMA is considered consistent with the AWQMP as long as the following criteria are met:

1. Meets Ohio EPA's regulatory and technical requirements
2. Consists solely of actions that are within the existing FPA boundary, and
3. Conforms to accepted regional population projections.

Requests for plan updates that do not follow the policies are considered to be incomplete.

### **10.3 OHIO EPA PERMIT TO INSTALL PROCESS**

The Ohio EPA is responsible for issuing PTIs. A full explanation of the PTI application and review process is provided on Ohio EPA's website at:

<http://www.epa.state.oh.us/dsw/pti/index.aspx>.

The Ohio EPA tracks pending PTI applications on their website at:

<http://wwwapp.epa.ohio.gov/dsw/pti/PtiStatus.htm>.

### **10.4 ONGOING MAINTENANCE OF THE AWQMP FOR THE MIAMI VALLEY**

Upon final adoption of this update to the Areawide Water Quality Management Plan, the Miami Valley Regional Planning Commission resumes the regular, ongoing responsibility to maintain the content of the plan to ensure that it addresses new developments in the state and federal regulatory environment, and local plans for development in the five county region. To accomplish this, MVRPC will continue to manage a process designed to facilitate dialogue between and among diverse water interests in the region, including jurisdictions, utilities, watershed groups, environmental groups, regulators, and MVRPC staff.

#### **10.4.1 Meetings**

All interested parties will be invited and encouraged to attend periodic watershed-based meetings in which current issues regarding the Plan content will be open for discussion. Currently existing meetings (the Great Miami River Watershed Network and the Upper Little Miami TMDL Implementation Group) will be leveraged for their opportunities to foster dialogue regarding development and water resources. Jurisdictions proposing changes to Facility Plans or Facility Planning Areas within the AWQMP will be asked to make short presentations to the appropriate watershed meeting to describe the proposed change. Presentations on developments regarding groundwater protection, storm water management, agricultural BMPs

and on-site sewage treatment management will also be encouraged so that the meeting participants can be informed on the broad range of water resource issues in the AWQMP.

#### **10.4.2 Tours**

Annually, in coordination with numerous agencies across the region, MVRPC will sponsor a “Best Management Practices Tour” of current and recent projects designed to protect or enhance water resources in the region. These tours will demonstrate the ongoing work of many agencies, with the intention of sharing ideas and approaches to water resource management across the region.

#### **10.4.3 Content Review**

In coordination with jurisdictions and agencies across the region MVRPC staff annually will compile necessary and requested updates to the content of the AWQMP for the review and consideration of the MVRPC Board of Directors. ANY Designated Management Agency (DMA) may submit updates to the AWQMP relevant to their area of responsibility. Additionally, MVRPC staff may recommend updates to the AWQMP based upon regulatory changes, updates to ongoing projects and other similar developments that warrant a change to plan content.

#### **10.4.4 Committee Structure**

The MVRPC Areawide Facility Planning Subcommittee will have the responsibility of detailed review and comment on all proposed updates to the AWQMP for the Miami Valley. After the subcommittee’s review, proposed updates to the AWQMP recommended by the subcommittee will be forwarded to the MVRPC Technical Advisory Committee for review, and then the MVRPC Board of Directors for consideration for adoption. Updates approved by the MVRPC Board of Directors will be incorporated into the plan document, maintaining a single current plan report. The updated plan will be forwarded to Ohio EPA for state-level certification and incorporation into the state water quality management plan.

### **10.5 MVRPC RECOMMENDATIONS**

During the Plan update process, MVRPC staff developed a policy regarding modifications to Facility Planning Areas based on property annexation. The proposed policy was evaluated by the AFPSC and determined to conflict with MVRPC planning policies. Therefore, adoption of the proposed policy was not pursued.

Clarifying statements have been developed by MVRPC to the current Facility Planning Policies as follows:

- ORC 6117 and 6119 Sewer Districts can be useful tools for delivering sanitary services to areas in need of sewers and/or needing to disconnect from failing or underperforming on-site septic systems. Designated Management Agencies operating wastewater treatment facilities are encouraged to enter into satellite sewer services agreements to treat wastewater collected by sewer systems operated by 6117 and 6119 Sewer Districts,

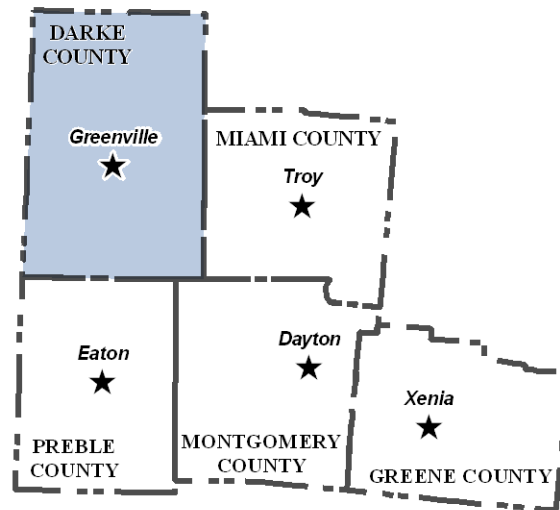
provided such arrangements can meet Ohio EPA permitting requirements. 6117 and 6119 Sewer Districts that have undertaken engineering planning for sewer design and financial planning for construction and long term operation and maintenance of a sewer system shall be given serious consideration for such satellite sewer service agreements.

- The Ohio Revised Code specifically anticipates the possibility that an area served by 6117 Sewer Districts may be annexed by a municipal corporation, and provides suggested mechanisms for compensating the Sewer District for infrastructure investments. See ORC section 6117.05. For this reason, anticipated or desired annexations should not discourage Designated Management Agencies from entering into satellite sewer service agreements with 6117 Sewer Districts. Rather, because future annexation interests are protected, priority should be given to delivery of sanitary services.
- MVRPC will coordinate with the Ohio Kentucky Indiana (OKI) Planning Commission and/or Ohio EPA to ensure issues involving FPAs that overlie County boundaries and extend beyond the MVRPC areawide planning area will be appropriately addressed by all necessary planning agencies.

## Appendix A. Darke County

### A.1 DESCRIPTION AND LOCATION

Darke County is located in the northwest portion of the Miami Valley Region as shown in **Figure A-1** and encompasses approximately 600 square miles, or 26% of the planning area.



**Figure A-1. Darke County Location Map**

Land use within Darke County is predominately rural, with over 80% of the land used for agricultural production. Darke County has the second highest concentration of animal feeding operations (AFOs) in Ohio. The County is characterized by small villages and wide open spaces. There are also several natural open spaces along stream corridors designated for recreational use and wildlife preservation.

#### A.1.1 Communities in Darke County

Although Darke County includes several communities, it is not heavily populated. The most recent 20-year projections indicate that the population in Darke is expected to remain constant. Although the population projections indicate overall growth in Darke County over the next 20 years, the population within the Stillwater River watershed in the county is not anticipated to change significantly. The administrative boundaries within this area are listed in **Table A-1**.

**Table A-1. Administrative Boundaries within Darke County**

Townships			Incorporated Communities		
Adams	Neave	Liberty	Ansonia	Greenville	Versailles
Allen	Patterson	Mississinawa	Arcanum	North Star	Wayne Lakes
Brown	Richland	Wayne	Bradford (portion)	Osgood	Yorkshire
Franklin	Van Buren	York	Burkettsville/New Weston	Rosburg	
Greenville	Wabash	Washington	Gettysburg	Union City	
Jackson					



Watershed groups that are active in Darke County are listed in **Table A-2**.

**Table A-2. Watershed Groups in Darke County<sup>32</sup>**

<b>Watershed Group</b>	<b>Watershed(s)</b>
Grand Lake/Wabash Watershed Alliance	Grand Lake and Wabash River
Loramie Valley Alliance	Loramie Creek Watershed
Miami Conservancy District	Great Miami River Watershed
Stillwater Watershed Project	Stillwater River
Three Valley Conservation Trust	Fourmile, Sevenmile, Twin and Indian Creek Valleys
Twin Creek WAP	Twin Creek

### **A.1.2 Other Watershed-Related Groups in Darke County**

The following organizations and special districts are located and/or operate within Darke County:

- Darke County Parks: Alice Bish Park, Coppess Nature Sanctuary, Preserve, Eidson Woods Preserve, Prairie Ridge Park, Routzong Preserve, Shawnee Prairie Preserve, Tecumseh Point, Turkeyfoot Preserve, Winterrowd Wetland, Worth Family Preserve
- ODNR Drew Woods State Nature Preserve
- Miami University Institute of Environmental Sciences
- Ohio State University Extension Service
- Darke County Soil and Water Conservation District (SWCD)
- Darke County General Health District (GHD)
- Miami Valley Regional Planning Commission
- Miami Conservancy District

The Miami Conservancy District's trading program operates within Darke County and focuses on reducing nitrogen and phosphorous.

## **A.2 WATER RESOURCES**

Major streams in Darke County include the Stillwater River that flows from its headwaters in Indiana and northern Darke County to a confluence with the Great Miami River in Dayton. The Stillwater River flows in a generally eastward direction through Darke County into western Miami County where it turns southward to Montgomery County. The major tributaries to the Stillwater River include Greenville Creek, Ludlow Creek, Painter Creek, Swamp Creek and North Fork Stillwater Creek.<sup>33</sup> The northwest corner of Darke County is drained by the Wabash River and Mississinawa River. **Figure A-2** provides an overview of the water resources in Darke County. Lakes in Darke County include the Wabash Conservancy District Structure Reservoir and Sugar Valley Lake.

<sup>32</sup> [http://ohiowatersheds.osu.edu/groups/wgp\\_county.php?county=Darke](http://ohiowatersheds.osu.edu/groups/wgp_county.php?county=Darke)

<sup>33</sup> OEPA Stillwater River Watershed TMDL 2010

### **A.3 LOCAL ON-SITE SEWAGE TREATMENT SYSTEM ISSUES**

In the Ohio Department of Health report “Survey of Household Sewage Treatment Systems Operation and Failure Rates in Ohio” published in 2008, it was noted that that better septic system management was recommended in the Stillwater River, Twin Creek and Wabash River watersheds in Darke County.

In 2008, the Darke County GHD received a 3-year U.S.EPA Section 319 grant to develop a detailed inventory of the location and performance of on-site systems in the county and to upgrade some failing systems. An HSTS plan for the county was developed to make the county eligible for the linked deposit program. **Figure A-3** shows the location of HSTSs in Darke County.

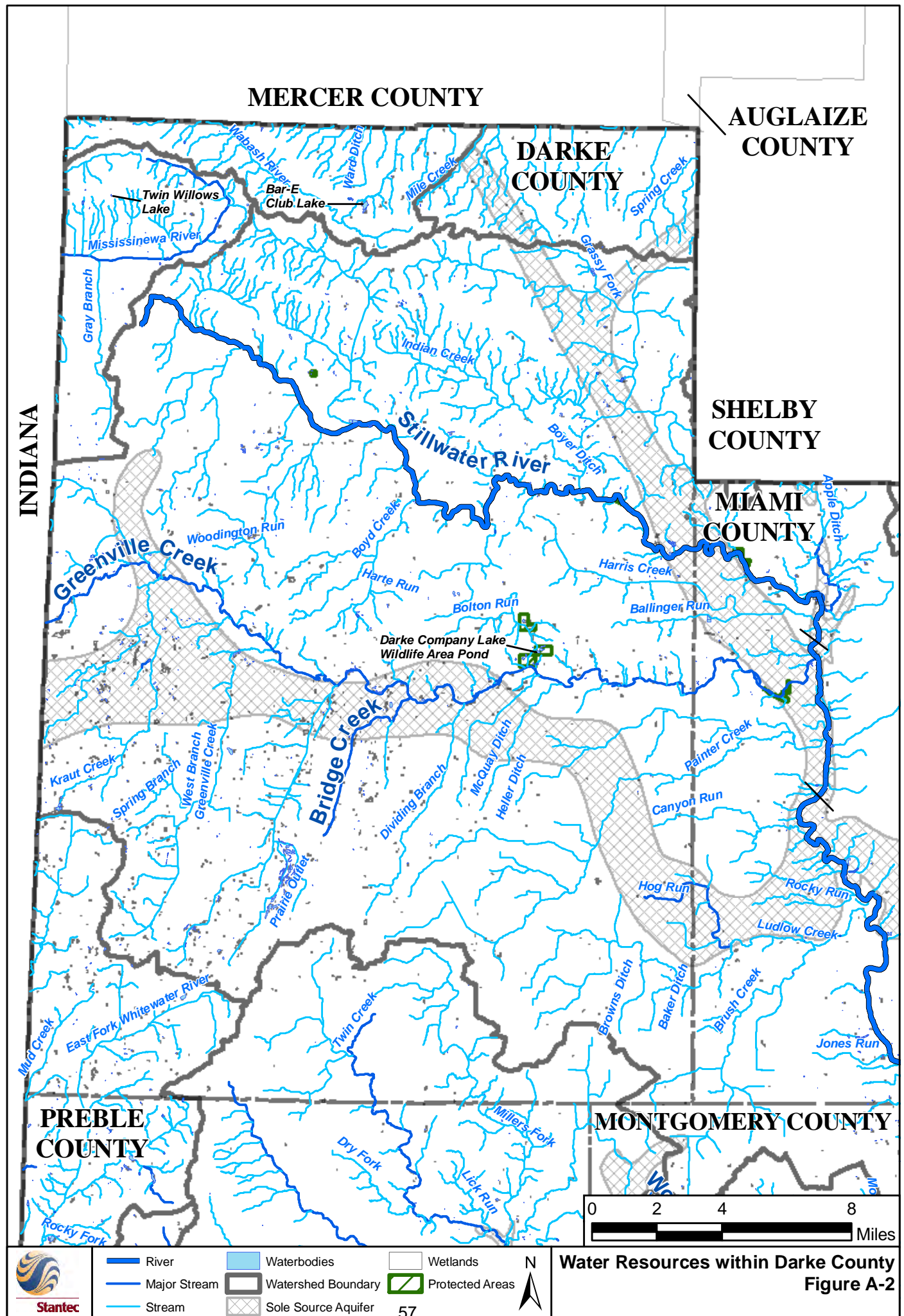
As reported in Ohio EPA’s 2009 Stillwater River TMDL Report, septic systems impact water quality in the Stillwater River watershed (which includes a significant amount of area in Darke County) through failed, faulty, or discharging systems and improper disposal of septage from septic systems. Implementation actions to address these sources of pollution would include oversight of septic tank waste haulers, identification of faulty septic systems, elimination of on-site septic systems through extension of municipal sanitary sewers, and public education about septic system maintenance.

Localized areas of concern as noted by the Darke County General Health District, Darke County SWCD and Ohio EPA are briefly described in the following sections.

#### **A.3.1 Village of Castine**

While 2000 Census data indicated that there were 46 households in the Village of Castine, Darke County GHD records indicate that only 38 permits were issued for the area. Of those permits, two were for churches (leachfields) and the remaining permits were issued to individuals. It is assumed that there are at least 10 homes without permits that are likely tank to tile systems with no secondary treatment of waste.

Existing subsurface sand filters, tank to tile systems, aerators and drywells do not meet Ohio EPA discharge standards. There are approximately 25 homes that are not meeting Ohio EPA discharge standards, equating to approximately 10,000 gallons per day of untreated sewage entering Twin Creek. Most of the leach beds are older systems with very small tanks and small leach beds. It is not known how well these systems are working or whether they have been illegally tied into the storm sewer. The majority of these homes are on very small lots that do not have adequate space for septic system installation or replacement.



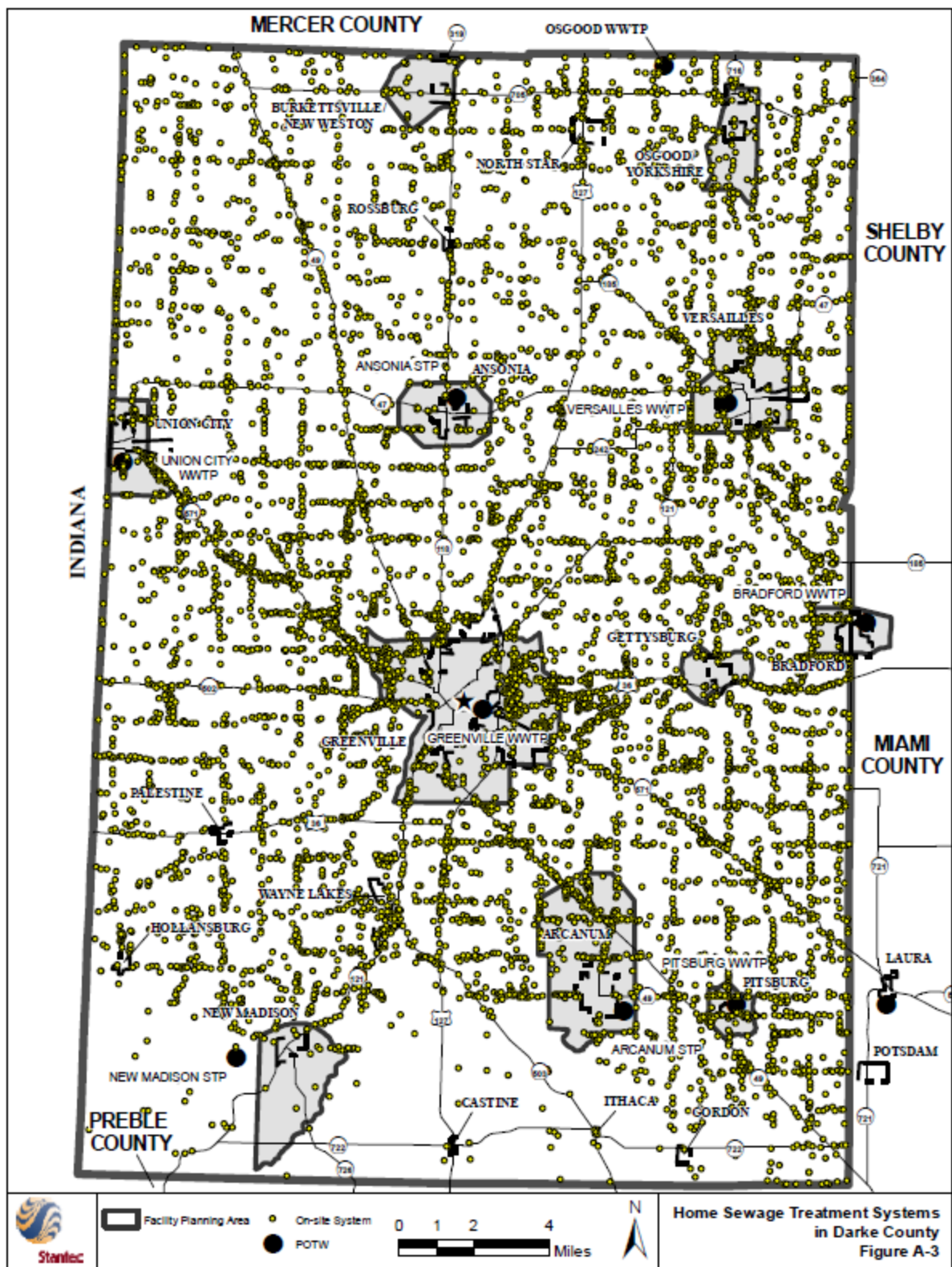


Figure A-3. Home Sewage Treatment Systems in Darke County

### **A.3.2 Harrison and Liberty Township**

There are 92 homes along the force main route including Hollansburg Arcanum Road, Richmond Palestine Road, and Mills Road. The Darke County GHD records show there are 72 permits for HSTS for these homes. There are at least 20 homes without permitted HSTS that are likely tank to tile systems with no secondary treatment of waste.

Existing subsurface sand filters, tank to tile systems, aerators and drywells do not meet Ohio EPA discharge standards. Consequently, there are approximately 47 homes that are not meeting Ohio EPA discharge standards. This equates to approximately 18,800 gallons per day of untreated sewage based upon an estimate of 400 gallons per day per home into Lake and West Branch, which flow to Greenville Creek. Several of the leach beds are older systems with very small tanks and small leach beds. It is not known how well these systems are working or whether they have been illegally tied into field tile.

Twenty-seven (27) properties along the proposed force main routes encompass less than 2.5 acres and 62 properties encompass less than 10 acres each.

### **A.3.3 Glen Karn Area**

Census data from the year 2000 indicated that there are 27 households in the Glen Karn area. Darke County GHD records show that 18 HSTS permits were issued for this area. Of the permits, one was issued to a local business (1 leach bed), and the remaining permits were issued to individuals. Therefore, it is assumed that there are at least 9 homes without permits that are likely tank to tile systems with no secondary treatment of waste.

Existing subsurface sand filters, tank to tile systems, aerators and drywells do not meet Ohio EPA discharge standards. Consequently, there are approximately 17 homes that are not meeting Ohio EPA discharge standards. This equates to approximately 6,800 gallons per day of untreated sewage based upon an estimate of 400 gallons per day per home into East Fork of the Whitewater River. Most of the leach beds are older systems with very small tanks and small leach beds. It is not known how well these systems are working or whether they have been illegally tied into the storm sewer. Most of these homes are on very small lots that do not have adequate room for septic system installation or replacement.

### **A.3.4 Village of Palestine**

Census data from 2000 indicated that there were 73 households within the Village of Palestine. Darke County GHD records indicate that there are 40 permits for the area. Of these permits, three are for the Palestine Recreation Park (2 privies and 1 leach bed), one was issued to the Church of Palestine (subsurface sand filter), and one to the Liberty Township Fire House (subsurface sand filter), and the remainders were issued to individuals.

Existing subsurface sand filters, tank to tile systems, aerators and drywells do not meet Ohio EPA discharge standards. Consequently, there are approximately 45 homes that are not meeting Ohio EPA discharge standards. This equates to approximately 18,000 gallons per day of untreated sewage based upon an estimate of 400 gallons per day per home into Spring



Branch, which flows to West Branch of Greenville Creek. Most of the leach beds are older systems with very small tanks and small leach beds. It is not known how well these systems are working or whether they have been illegally tied into the storm sewer.

Palestine and Hollansburg have formed a joint sewer district ~~are working together~~ to develop a regional solution, including sanitary sewers and a shared wastewater treatment facility.

### **A.3.5 Village of Wayne Lakes**

In 2000, U.S. Census data indicated that there were 307 households within the Village of Wayne Lakes. Darke County GHD records indicate that 324 HSTS permits were issued for the Village. Many of the systems were initially holding tanks, but now discharge directly to the Lakes. There are many small septic tanks with approximately 200 lineal feet of leaching trench or small septic tanks followed by drywells. As Wayne Lakes was formally a gravel pit, the effluent passes through the soil too quickly for adequate treatment and leaches to the Lakes. The Lakes flow into Mud Creek, which then flows into Greenville Creek. Water quality impacts have been observed in the Lakes.

Existing subsurface sand filters, tank to tile systems, aerators and drywells do not meet Ohio EPA discharge standards. According to the GHD, there are approximately 136 homes that are not meeting Ohio EPA discharge standards. This equates to approximately 54,400 gallons per day of untreated sewage based upon an estimate of 400 gallons per day per home into Mud Creek. Most of the leach beds are older systems with very small tanks and small leach beds. It is not known how well these systems are working or whether they have been illegally tied into the lakes. Most of the homes in the area are located on very small lots that do not have adequate space for septic system installation or replacement.

In 2020 and 2021 the Village of Wayne Lakes worked with Darke County, Village of New Madison and other funding partners to plan and design a sanitary sewer system for the village. The plan includes a septic tank effluent pump (STEP) sanitary sewer collection system, force main and treatment service agreement with the Village of New Madison. By the fourth quarter of 2021 financing applications were submitted as well as the permit to install application to Ohio EPA. The system is expected to be fully implemented by 2025.

### **A.3.6 Villages of Gordon and Ithaca**

As reported in 2000 Census data, there were 78 households in the Village of Gordon and 28 households in the Village of Ithaca. Darke County GHD records indicate that 59 permits were issued for the Village of Gordon and 38 in the Village of Ithaca. Of those permits, two were issued for commercial properties (1 aerator with upflow filter, 1 leachfield), three were issued to churches (2 subsurface sand filters, 1 leachfield), one for the cemetery (1 subsurface sand filter) and the remainder of permits were issued to individuals. Therefore, it is assumed that there are at least 25 homes without permits that are likely tank to tile systems with no secondary treatment of waste.

Existing subsurface sand filters, tank to tile systems, aerators and drywells do not meet Ohio EPA discharge standards. According to the GHD, there are approximately 57 homes that are



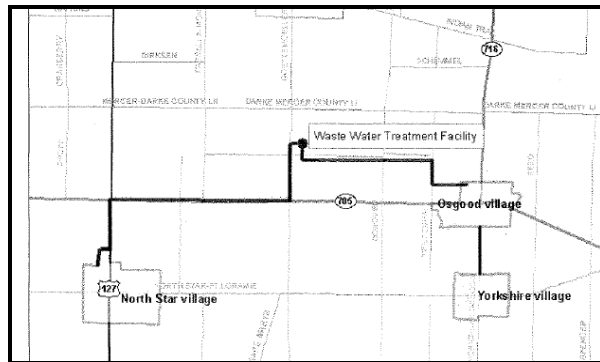
day of untreated sewage based upon an estimate of 400 gallons per day per home into Millers Fork. Most of the leach beds are older systems with very small tanks and small leach beds. It is not known how well these systems are working or whether they have been illegally tied into the storm sewer. The majority of these homes are on very small lots that do not have adequate space for septic system installation or replacement.

Gordon and Ithaca are working together to develop a regional solution.

### A.3.7 Villages of Yorkshire, Osgood and North Star

Currently, the villages of Yorkshire, Osgood and North Star in northern Darke County have no central sewer service. Due to the age of most of the properties, most of the sewage systems will not meet current health department standards. Replacing failing systems with new systems is not an option in most cases, as most of the lot sizes are not large enough to allow for a modern on-site wastewater disposal system configuration.

All three villages are currently developing plans to install central sewer systems, and are working together to construct a lagoon-type WWTP. The proposed treatment plant would receive the wastewater from the three villages, along with a portion of the surrounding areas outside of village limits. The proposed facilities are depicted in **Figure A-5**. The proposed collection system and WWTP projects are needed to abate a long standing environmental hazard, where inadequately-treated wastewater is ultimately discharged to an unnamed tributary in the Upper Loramie Creek Watershed.



**Figure A-5. Proposed Regional Wastewater Facilities to Serve North Star, Osgood and Yorkshire Villages in Darke County**<sup>34</sup>

## A.4 PUBLIC WASTEWATER TREATMENT MANAGEMENT AGENCIES

A listing of the FPAs, DMAs and municipal WWTPs within Darke County is presented in **Table A-3**. The locations of FPAs, existing municipal point sources, sensitive groundwater aquifer, and other unique features of Darke County are shown in **Figure A-6**.

<sup>34</sup> Ohio EPA, Draft Finding of No Significant Impact, Village of Yorkshire Sanitary Sewer System, August 27, 2010.

Table A-3. Summary of FPAs, DMAs, and WWTPs in Darke County

Facilities Planning Area (FPA)	Primary DMA		Secondary DMA(s)	Area(s) Serviced (p = portion)	Design Capacity (mgd)	Ave. Daily Flow (mgd)	Receiving Waterway
	Owner / Operator	Wastewater Designation					
Ansonia/Rossburg	Village of Ansonia	Ansonia Sewage Treatment Plant	Village of Rossburg	Village of Ansonia, Village of Rossburg	0.35	.047	Stillwater River
Arcanum	Village of Arcanum	Arcanum Sewage Treatment Plant		Village of Arcanum	0.4	x	Sycamore Ditch to Painter Creek
Burkettsville/New Weston	Village of Burkettsville	n/a					
Darke County Unincorporated	Darke County	Stillwater Golf Estates Wastewater Treatment Works			x	x	Unnamed Tributary of the Stillwater River
		Rolin Acres Subdivision			x	x	Boyd Creek
	Darke County General Health District						
	Darke County SWCD						
Gettysburg	Village of Gettysburg						
Greeneville	City of Greeneville	Greeneville WWTP		City of Greeneville	3.5	2.2	Greeneville Creek
New Madison	Village of New Madison	New Madison Sewage Treatment Plant	<u>Village of Wayne Lakes</u>	Village of New Madison	0.13	x	East Fork of the Whitewater River
Osgood, Yorkshire, North Star	Village of Osgood	Osgood WWTP	Village of North Star Village of Yorkshire	Villages of Osgood, North Star, Yorkshire	0.122	x	Brandewie Ditch
<u>Palestine-Hollansburg</u>	<u>Palestine-Hollansburg Sewer District</u>		<u>Village of Palestine Village of Hollansburg</u>	<u>Villages of Paletine and Hollansburg, Glen Karn</u>			
Pittsburg	Village of Pittsburg	Pittsburg Wastewater Treatment Works		Village of Pittsburg	0.095	x	Ludlow Creek
Union City	Village of Union City	Union City Wastewater Treatment Works		Village of Union City	x	x	Unnamed Tributary of Gray Branch
<u>Wayne Lakes</u>	<u>Village of Wayne Lakes</u>	<u>New Madison Sewage Treatment Plant</u>		<u>Village of Wayne Lakes (collection only)</u>	<u>n/a</u>		<u>East Fork of the Whitewater River</u>
Versailles	Village of Versailles	Versailles Sewage Treatment Plant		Village of Versailles	3.5	0.75	Swamp Creek

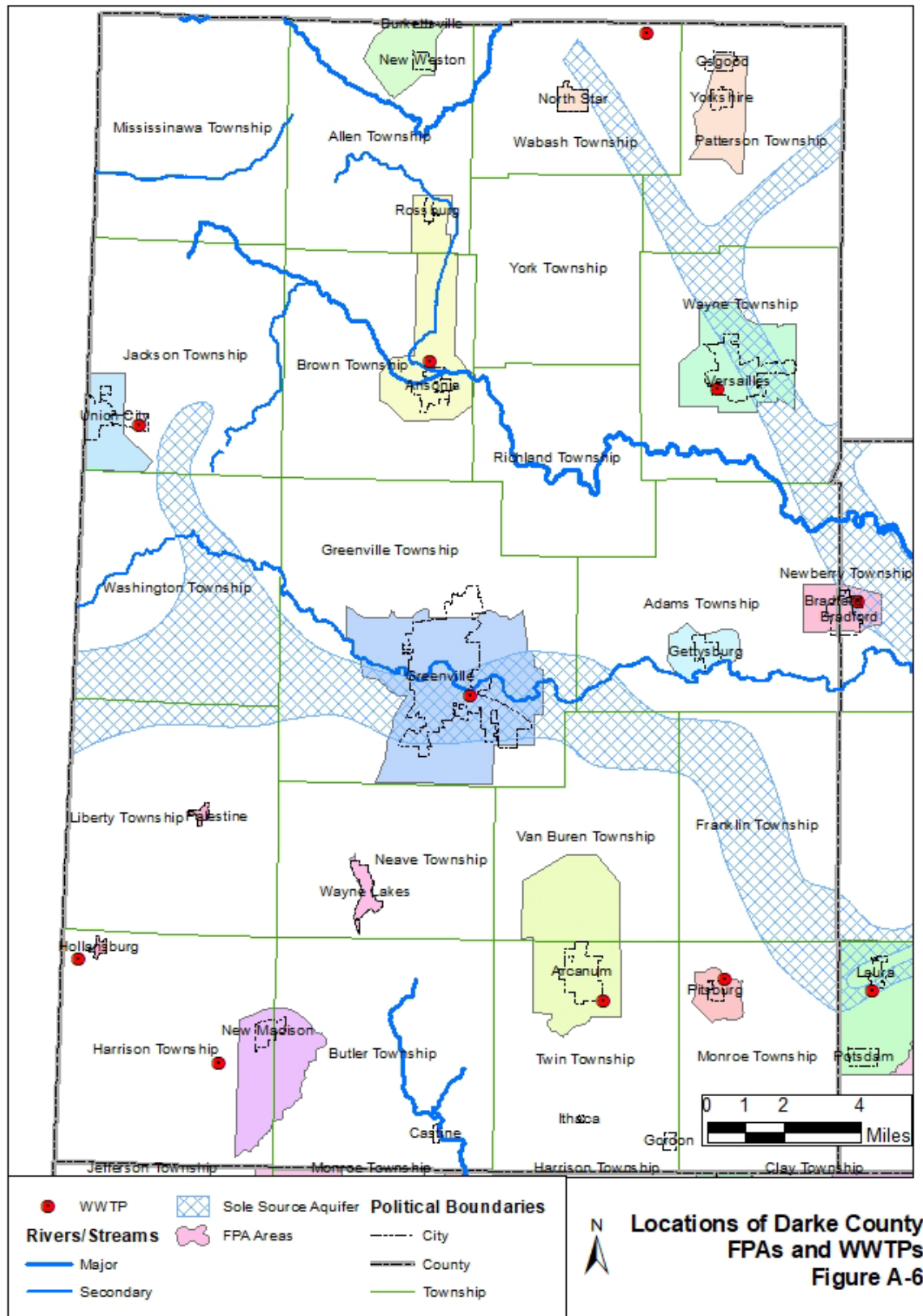


Figure A-6. Locations of Darke County FPA and WWTPs

## A.5 OTHER PERMITTED POINT SOURCES

The facilities listed in **Table A-4** have been issued NPDES permits to discharge wastewater in Darke County.

**Table A-4. Industrial and Minor Wastewater Dischargers in Darke County**

Type of Discharge	Facility
Minor	Arrowhead Campground
Industrial	Shamrock Materials Ft Jefferson Limestone
Minor	Sherwood Forest MHP
Minor	Darke Co Home
Minor	Darke Co Criminal Justice Center
Industrial	Markwith Tool Co Inc.
Minor	Greenville Country Club
Industrial	Foureman Sand & Gravel Inc.
Minor	Wildcat Woods Campground
Minor	Northtowne Apartments
Minor	Woodland Heights Elem School
Minor	Stillwater Golf Estates
Minor	Mississinawa Valley Local School District Office
Minor	Cottonwood Lakes Campground
Minor	Midwest Poultry Service Sunny Side Farms

## A.6 DARKE COUNTY PRESCRIPTIONS

This section summarizes specific actions prescribed by Ohio EPA that are applicable in Darke County.

### A.6.1 Ohio EPA Prescribed Actions (Twin Creek TMDL)

The following prescriptions were included in Ohio EPA's 2010 Twin Creek TDML Report:

#### **Manage nutrients in agricultural areas to reduce runoff**

- Develop and improve nutrient management plans to address site-specific resource concerns
- Implement NRCS 633 standards for winter application of manure
- Plant winter cover crops to provide manure application sites
- Install tile drainage control structures
- Restore and use wetlands to filter runoff, remove nutrients

#### **Improve erosion and sediment control in all areas**

- Practice conservation tillage on row crop farms
- Install filter strips along all agricultural tributaries

- Restore and utilize wetlands to filter runoff and remove sediments
- Establish and protect riparian buffers on streams
- Utilize bank erosion control structures where appropriate

#### **Eliminate bacteria problems**

- Improve planning for environmentally sustainable manure management at livestock and poultry production facilities
- Reduce home sewage treatment system failures
- Educate citizens about proper maintenance of home sewage treatment systems

### **A.7 DARKE COUNTY RECOMMENDATIONS**

This section summarizes the specific actions that are recommended by Ohio EPA in Darke County.

#### **A.7.1 Ohio EPA Recommendations (Stillwater River TMDL)**

The following is a summary of the regulatory, non-regulatory, and incentive based actions that were included in Ohio EPA's 2010 Stillwater River Watershed TMDL Report.

#### **Regulatory:**

- Phosphorus limits for specific NPDES dischargers where aquatic life use attainment downstream of the effluent is impaired
- Any new requirements that may be developed for household sewage treatment systems (statewide)
- Sewage sludge disposal standards to regulate sludge application rates (statewide)
- Phase I and II stormwater requirements

#### **Non-Regulatory:**

- Incorporation of the recommendations of the Stillwater River Watershed TMDL into the watershed action plan
- The Stillwater Watershed Joint Board of Supervisors to promote the watershed action plan and other activities contributing to the goals of the TMDL project
- Periodic stream monitoring to measure progress
- Removal of the low head dam at Englewood

#### **Incentive-Based:**

- 319-funded projects for the entire Stillwater watershed which support the goals of the TMDL
- 319-funded (in part) watershed coordinator to promote watershed improvement activities

- various loan opportunities for WWTP, septic system, agriculture practices and riparian/habitat improvements
- A pilot program to test tying conservation payments to performance standards for reducing loads in impaired stream segments with 10-15 farmers

#### **A.7.2 Ohio EPA Recommendations (Twin Creek TMDL)**

The following recommendations were included in Ohio EPA's 2010 Twin Creek TMDL Report:

- Failing or poorly operating home sewage treatment systems (HSTs) should be inspected and improved in rural, urban and developing areas by the county health departments.
- Sediment flowing into streams is a concern in both agricultural and developing areas. Controls include reducing erosion with cover crops or conservation tillage; providing buffers along stream banks; identifying concentrated flow paths from agricultural fields and implementing site-specific practices to reduce sources of sediment and nutrient load; and adopting measures that maintain stream stability during land disturbance activities such as stream drainage maintenance.
- Nutrient loading from livestock operations and agriculture chemicals would be abated by conservation and management practices promoted by the USDA Natural Resource Conservation Service. Suggestions include adoption of phosphorus index and nitrogen index strategies to address nitrogen leaching and phosphorus concentration buildup on agricultural land.
- Agricultural producers are encouraged to buffer streams near crop land using filter strips and streamside vegetation. This will help to filter sediment and nutrients out of runoff and will provide instream shade and habitat to reduce temperatures, thereby increasing dissolved oxygen content and reducing algae blooms.
- Agricultural producers are encouraged to participate in wetland restoration in areas of land that consistently retain water. Wetlands are a natural filtering mechanism for nutrients and sediment.
- Residential, commercial and other urban areas can reduce overland loading of nutrients by practicing better timing and rate of fertilizer application.





# MIAMI VALLEY

Regional Planning Commission

10 North Ludlow St., Suite 700  
Dayton, Ohio 45402

t: 937.223.6323  
f: 937.223.9750  
TTY/TDD: 800.750.0750  
www.mvrpc.org

## MEMORANDUM

**To:** Technical Advisory Committee, Board of Directors  
**From:** MVRPC Staff  
**Date:** November 9, 2021  
**Subject:** SFY2021-SFY2024 Transportation Improvement Program (TIP) Amendment #14

Over the last few months MVRPC and ODOT have made numerous modifications to the programming documents for various projects resulting in the need for an SFY2021-SFY2024 TIP amendment. The attached TIP Tables 4.1, 4.3 and 4.4 reflect the updated information for each specific project. Modifications to Statewide Line Item projects are shown on Table 4.6 and are provided for information only. A TIP terminology explanation chart of key abbreviations used in the highway/bikeway tables precedes Table 4.1. A resolution adopting the proposed TIP amendment is attached for your review and consideration. The MVRPC staff recommends your approval.

### Attachments:

- (1) TIP Abbreviation Table
- (2) Amended MVRPC TIP tables: 4.1, 4.2, 4.3 and 4.4
- (3) Statewide Line Item Project table 4.6 (For information only)
- (4) Resolution Adopting Amendments to the SFY2021-2024 TIP

## EXPLANATION OF ABBREVIATIONS USED IN TABLES 4.1 – 4.8

### **Project I.D. #**

First Three Characters  
 000 = Unique Project Number  
 Decimal Character = Subtype (as described below)  
 .1 = New Construction  
 .2 = Reconstruction  
 .3 = Resurface  
 .4 = Safety Improvement  
 .5 = Bridge Replacement/Rehabilitation  
 .6 = Signal Improvement  
 .7 = Bikeway/Pedestrian Improvement  
 .8 = Other Improvements

### **PID #**

ODOT "Project Identification Number"

### **Air Quality Status**

Identifies projects which were included  
 in the LRTP air quality conformity analysis  
 Upper Row = Project is Exempt or was Analyzed  
 Lower Row = Build Year Scenario (2020, 2030 or 2040)

### **Phase of Work**

ENG -Environmental and Contract Plan Preparation  
 ROW -Right-of-Way Acquisition  
 CON -Construction  
 SPR -Federal State Planning and Research  
 DBT -Debt Service

### **LRTP Goal**

G1 -Address regional transp. needs through improved planning  
 G2-1 -Encourage a stronger multi-modal network in the Region  
 G2-2 -Maintain the regional transportation system  
 G2-3 -Upgrade the regional transportation system  
 G2-4 -Incorporate regional land use strategies  
 G3 -Enhance attractiveness for future economic development  
 G4 -Encourage pursuit of alternative fuels to reduce emissions

### **FUND CODES, DESCRIPTION AND TYPICAL FUNDING SPLIT**

#### **Federal Allocation of ODOT or County Engineer Association Controlled Funds**

Typical  
Fed./Local Share

BR	-Bridge Replacement and Rehabilitation	80/20
EAR	-Federal Earmark, Specific Source Undetermined at this Time	Varies
f-5307	-Urbanized Area Formula Grant	80/20
f-5310	-Enhanced Mobility of Seniors and Individuals with Disabilities	80/20
f-5337	-State of Good Repair Program	80/20
f-5339	-Bus and Bus Facilities Formula Program	80/20
HSIP	-Highway Safety Improvement Program	90/10
IM	-Federal-Aid Interstate Maintenance (Resurfacing, Restoring, Rehabilitation)	90/10
NH	-National Highway System	80/20
NHPP	-National Highway Performance Program	80/20
OTH	-Other	Varies
SPR	-Federal State Planning and Research	80/20
SRTS	-Safe Routes to School	100
STA	-Surface Transportation Program (ODOT Transportation Alternatives Set-aside)	80/20
STD	-Surface Transportation Program (ODOT Allocation)	80/20
TRAC	-Transportation Review Advisory Council	Varies

#### **Federal Allocation of MVRPC Funds**

Fed./Local Share

CMAQ	-Congestion Mitigation and Air Quality	Varies
STP	-Surface Transportation Program	Varies
TA	-Surface Transportation Program (Transportation Alternatives Set-aside)	Varies

#### **Other Funding Sources**

Other/Local Share

CDBG	-Community Development Block Grant	Varies
LOCAL	-Local Funds	0/100
ODOD	-Ohio Department of Development	Varies
OPWC	-Issue 2/LTIP	80/20
STATE	-ODOT State Funds	0/100
ELLIS	-ODOT's Project Monitoring Database	
TELUS	-MVRPC's Project Monitoring Database	

# Miami Valley Regional Planning Commission

Table 4.1 RECOMMENDED SFY 2021 - SFY 2024 TRANSPORTATION IMPROVEMENT PROGRAM (HIGHWAY, BIKEWAY AND OTHER PROJECTS)

## Greene County Projects

COUNTY, ROUTE, SECTION: GRE035-05.84			ODOT PID # 107217		MVRPC # 2108.2	PROJECT SPONSOR: ODOT District-8	
DESCRIPTION: US 35 at Valley/Trebein Intersection-Replace the existing intersection with an interchange of Valley/Trebein over US 35.							
COMMENTS : Construction moved up to SFY2023 from SFY2024 and added Federal, State and Local construction funds to reflect changes in Ellis.							
TOTAL COST (000): \$32,543		LET TYPE: Traditional	A.Q. : Analyzed	LRTP GOAL: G2-3			
PHASE	FUND	PRIOR	SFY2021	SFY2022	SFY2023	SFY2024	Future
ENG	NHPP	\$1,048					
ENG	STATE	\$200					
ENG	NHPP		\$79				
ENG	STATE		\$20				
ROW	NHPP			\$724			
ROW	STATE			\$181			
CON	LOCAL				\$2,710		
CON	NHPP				\$21,914		
CON	STATE				\$5,668		

**Table 4.1 RECOMMENDED SFY 2021 - SFY 2024 TRANSPORTATION IMPROVEMENT PROGRAM (HIGHWAY, BIKEWAY AND OTHER PROJECTS)**

**Greene County Projects**

COUNTY, ROUTE, SECTION: GRE072-08.71			ODOT PID # 112038		MVRPC # 2271.3	PROJECT SPONSOR: ODOT District-8		
DESCRIPTION: SR 72 from approximately 0.25 miles north of the westbound US-35 exit ramp to the Cedarville SCL-Resurface and complete pavement repairs. Widen pavement to a total surface width of 29' to provide for center and edge line rumble strips.								
COMMENTS : Increased Federal STD construction funds, added Federal HSIP construction funds and decreased State construction funds to reflect changes in Ellis.								
TOTAL COST (000): \$8,916			LET TYPE: Traditional		A.Q. : Exempt		LRTP GOAL: G2-2	
PHASE		FUND	PRIOR	SFY2021	SFY2022	SFY2023	SFY2024	Future
ENG		HSIP	\$474					
ENG		STATE	\$53					
ROW		STATE	\$60					
ENG		HSIP		\$365				
ENG		STATE		\$41				
ENG		HSIP			\$113			
ENG		STATE			\$13			
ROW		STATE			\$600			
CON		HSIP				\$2,220		
CON		STATE				\$1,192		
CON		STD				\$3,786		

# Miami Valley Regional Planning Commission

Table 4.2 RECOMMENDED SFY 2021 - SFY 2024 TRANSPORTATION IMPROVEMENT PROGRAM (HIGHWAY, BIKEWAY AND OTHER PROJECTS)

## Miami County Projects

<b>COUNTY, ROUTE, SECTION:</b> MIA - High Street Improvements			<b>ODOT PID #</b> 105753		<b>MVRPC #</b> 2043.2		<b>PROJECT SPONSOR:</b> Covington	
<b>DESCRIPTION:</b> High Street in Covington from SR 41 to US 36-Reconstruction and widening by 1' on each side to allow more room for parking and traffic. Sidewalk and curb ramps are being replaced to improve pedestrian traffic.								
<b>COMMENTS :</b> Decreased Local construction funds to reflect changes in Ellis.								
<b>TOTAL COST (000):</b> \$4,555		<b>LET TYPE:</b> Traditional		<b>A.Q. :</b> Exempt		<b>LRTP GOAL:</b> G2-3		
PHASE		FUND	PRIOR	SFY2021	SFY2022	SFY2023	SFY2024	Future
ENG		STATE	\$166					
ENG		LOCAL	\$300					
ROW		LOCAL	\$90					
ROW		STP	\$270					
ROW		LOCAL		\$60				
CON		LOCAL			\$1,004			
CON		STP			\$2,666			

<b>COUNTY, ROUTE, SECTION:</b> MIA - Great Miami River Trail Bridge			<b>ODOT PID #</b> 108160		<b>MVRPC #</b> 2125.7		<b>PROJECT SPONSOR:</b> Piqua	
<b>DESCRIPTION:</b> East of Goodrich Giles Park over the Great Miami River at the south end of Piqua-Replacement of the existing inadequate pedestrian bikeway bridge with an ADA accessible bridge located in a more scenic location.								
<b>COMMENTS :</b> Construction moved up to SFY2022 from SFY2023 based on request from the project sponsor.								
<b>TOTAL COST (000):</b> \$2,119		<b>LET TYPE:</b> Traditional		<b>A.Q. :</b> Exempt		<b>LRTP GOAL:</b> G2-3		
PHASE		FUND	PRIOR	SFY2021	SFY2022	SFY2023	SFY2024	Future
ENG		STATE	\$166					
ENG		LOCAL	\$238					
ROW		LOCAL		\$35				
CON		LOCAL			\$684			
CON		STP			\$996			

# Miami Valley Regional Planning Commission

Table 4.3 RECOMMENDED SFY 2021 - SFY 2024 TRANSPORTATION IMPROVEMENT PROGRAM (HIGHWAY, BIKEWAY AND OTHER PROJECTS)

## Montgomery County Projects

<b>COUNTY, ROUTE, SECTION:</b> MOT - East Second Street Cycle Track			<b>ODOT PID #</b> 106118		<b>MVRPC #</b> 2070.7		<b>PROJECT SPONSOR:</b> Dayton	
<b>DESCRIPTION:</b> East Second Street in Dayton from St. Clair Street to Webster Street-The project consists of adding a cycle track and pedestrian lighting.								
<b>COMMENTS :</b> Increased Local construction funds to reflect changes in Ellis.								
<b>TOTAL COST (000):</b> \$656			<b>LET TYPE:</b> Local-let		<b>A.Q. :</b> Exempt		<b>LRTP GOAL:</b> G2-1	
<b>PHASE</b>		<b>FUND</b>	<b>PRIOR</b>	<b>SFY2021</b>	<b>SFY2022</b>	<b>SFY2023</b>	<b>SFY2024</b>	<b>Future</b>
ENG		LOCAL	\$25					
ENG		STATE	\$6					
CON		LOCAL			\$275			
CON		TA			\$350			

COUNTY, ROUTE, SECTION:			MOT725-14.41		ODOT PID #	108619	MVRPC #	2145.4	PROJECT SPONSOR:	ODOT District-7		
DESCRIPTION: SR 725 at I-75-Convert the interchange to a diverging diamond (DDI), upgrade the traffic signal at Byers Road and install sidewalk along SR 725.												
COMMENTS : Increased Federal and State PE funds in SFY2022 to reflect changes in Ellis.												
TOTAL COST (000):		\$12,009	LET TYPE:		Traditional		A.Q. :		Exempt		LRTP GOAL:	G2-3
PHASE		FUND	PRIOR	SFY2021	SFY2022	SFY2023	SFY2024	Future				
ENG		HSIP	\$354									
ENG		STATE	\$116									
ENG		HSIP	\$152									
ENG		STATE	\$38									
ENG		HSIP		\$54								
ENG		LOCAL		\$835								
ENG		STATE		\$16								
ENG		HSIP			\$815							
ROW		HSIP			\$120							
ROW		LOCAL			\$150							
ENG		STATE			\$204							
ROW		STATE			\$30							
CON		HSIP				\$2,384						
CON		LOCAL				\$834						
CON		NHPP				\$2,556						
CON		STATE				\$1,235						



**Table 4.3 RECOMMENDED SFY 2021 - SFY 2024 TRANSPORTATION IMPROVEMENT PROGRAM (HIGHWAY, BIKEWAY AND OTHER PROJECTS)**

**Montgomery County Projects**

<b>COUNTY, ROUTE, SECTION:</b> MOT725-14.41				<b>ODOT PID #</b> 108619		<b>MVRPC #</b> 2145.4		<b>PROJECT SPONSOR:</b> ODOT District-7	
<b>DESCRIPTION:</b> SR 725 at I-75-Convert the interchange to a diverging diamond (DDI), upgrade the traffic signal at Byers Road and install sidewalk along SR 725.									
<b>COMMENTS :</b> Increased Federal and State PE funds in SFY2022 to reflect changes in Ellis.									
<b>TOTAL COST (000):</b> \$12,009		<b>LET TYPE:</b> Traditional		<b>A.Q. :</b> Exempt		<b>LRTP GOAL:</b> G2-3			
<b>PHASE</b>		<b>FUND</b>	<b>PRIOR</b>	<b>SFY2021</b>	<b>SFY2022</b>	<b>SFY2023</b>	<b>SFY2024</b>	<b>Future</b>	
CON		STP				\$2,116			

COUNTY, ROUTE, SECTION: MOT075-16.83			ODOT PID # 95398		MVRPC # 1555.5	PROJECT SPONSOR: ODOT District-7	
DESCRIPTION: I-75 at Timber Lane-Remove and replace bridge deck.							
COMMENTS : Construction delayed from SFY2024 to SFY2025 to reflect changes in Ellis.							
TOTAL COST (000): \$3,523		LET TYPE: Traditional		A.Q. : Exempt		LRTP GOAL: G2-2	
PHASE	FUND	PRIOR	SFY2021	SFY2022	SFY2023	SFY2024	Future
ENG	STATE	\$6					
ENG	NHPP	\$140					
ENG	STATE	\$16					
ENG	NHPP	\$206					
ENG	STATE	\$23					
ENG	NHPP		\$115				
ENG	STATE		\$13				
CON	NHPP						\$2,705
CON	STATE						\$301

<b>COUNTY, ROUTE, SECTION:</b> MOT - Stillwater Bikeway Bridge			<b>ODOT PID #</b> 99981		<b>MVRPC #</b> 1775.7		<b>PROJECT SPONSOR:</b> Englewood	
<b>DESCRIPTION:</b> Old National Road at the Stillwater River-Construction of a covered bridge to enhance existing bikeway/pedestrian access and provide a connection with the regional bikeway system. The bridge would be constructed on the precise location of the former Historic National Road covered bridge.								
<b>COMMENTS :</b> Project canceled by the project sponsor and will be removed from the TIP.								
<b>TOTAL COST (000):</b> \$5,314		<b>LET TYPE:</b> Traditional		<b>A.Q. :</b> Exempt		<b>LRTP GOAL:</b> G2-1		
<b>PHASE</b>		<b>FUND</b>	<b>PRIOR</b>	<b>SFY2021</b>	<b>SFY2022</b>	<b>SFY2023</b>	<b>SFY2024</b>	<b>Future</b>
ENG		STATE	\$13					
ENG		LOCAL	\$394					
CON		LOCAL			\$1,906			
CON		STP			\$3,000			

# Miami Valley Regional Planning Commission

Table 4.4 RECOMMENDED SFY 2021 - SFY 2024 TRANSPORTATION IMPROVEMENT PROGRAM (HIGHWAY, BIKEWAY AND OTHER PROJECTS)

## Warren County Projects

COUNTY, ROUTE, SECTION: WAR123-29.40			ODOT PID # 110740		MVRPC # 2202.2		PROJECT SPONSOR: Franklin	
DESCRIPTION: SR 123 at Franklin Community Park Driveway/New Franklin High School Driveway-Realign the Community Park driveway to a 90 degree intersection opposite the new drive to the Franklin High School. Construction of a new roundabout with crosswalks and the installation of Rectangular Rapid Flashing Beacons for pedestrian safety. Street lights will be installed to illuminate the roundabout at night to increase pedestrian safety. The existing sidewalk on the southern/western side of SR123 will be extended to the new proposed roundabout.								
COMMENTS : Decreased Local construction funds to reflect changes in Ellis.								
TOTAL COST (000): \$2,064			LET TYPE: Traditional		A.Q. : Exempt		LRTP GOAL: G2-3	
PHASE		FUND	PRIOR	SFY2021	SFY2022	SFY2023	SFY2024	Future
ENG		STATE	\$85					
ENG		LOCAL		\$21				
CON		LOCAL					\$1,416	
CON		STP					\$542	

# Miami Valley Regional Planning Commission

**Table 4.6 - DETAILED PROJECT INFORMATION FOR STATEWIDE LINE ITEMS LISTED IN TABLE 4.5**

COUNTY, ROUTE, SECTION: MIA201-00.00 - SLI-009			ODOT PID # 109717		MVRPC # 2241.3		PROJECT SPONSOR: ODOT District-7	
DESCRIPTION: SR 201 from the Montgomery/Miami County Line to SR 571-Resurface the roadway with asphalt concrete.								
COMMENTS : Increased Federal and State construction funds to reflect changes in Ellis.								
TOTAL COST (000): \$531		LET TYPE: Traditional		A.Q. : Exempt		LRTP GOAL: G2-2		
PHASE	FUND	PRIOR	SFY2021	SFY2022	SFY2023	SFY2024	Future	
ENG	STATE	\$8						
CON	STATE			\$104				
CON	STD			\$418				

COUNTY, ROUTE, SECTION: GRE071/072-01.50/00.29 - SLI-009				ODOT PID # 112979		MVRPC # 2363.5		PROJECT SPONSOR: ODOT District-8	
DESCRIPTION: Smith Road over I-71-Rehabilitate bridge by repairing the backwall. SR 72 over I-71-Rehabilitate bridge by replacing the deck and painting the structural steel.									
COMMENTS : Deleted State PE funds in SFY2022 funds to reflect changes in Ellis.									
TOTAL COST (000): \$2,849		LET TYPE: Traditional		A.Q. : Exempt		LRTP GOAL: G2-2			
PHASE		FUND	PRIOR	SFY2021	SFY2022	SFY2023	SFY2024	Future	
ENG		STATE	\$166						
CON		NHPP					\$2,414		
CON		STATE					\$268		



**RESOLUTION AMENDING THE  
SFY2021-SFY2024 TRANSPORTATION IMPROVEMENT PROGRAM**

**WHEREAS**, the Miami Valley Regional Planning Commission is designated as the Metropolitan Planning Organization (MPO) by the Governor acting through the Ohio Department of Transportation in cooperation with locally elected officials for Greene, Miami and Montgomery Counties including the jurisdictions of Carlisle, Franklin, Springboro and Franklin Township in Warren County; and

**WHEREAS**, the MVRPC's Board of Directors serves as the policy and decision making body through which local governments guide the MPO's transportation planning process for the Dayton Metropolitan Area; and

**WHEREAS**, all Federally funded transit and highway improvements within Greene, Miami and Montgomery County must be included in the region's Transportation Improvement Program (TIP) prior to the expenditure of Federal funds; and

**WHEREAS**, the SFY2021-SFY2024 Transportation Improvement Program was adopted on May 7, 2020; and

**WHEREAS**, MVRPC and ODOT have made numerous modifications to the programming documents for various projects resulting in the need for a SFY2021-SFY2024 TIP amendment; and

**WHEREAS**, the proposed amendment is consistent with the Region's long-range transportation plan; and

**WHEREAS**, this TIP amendment will not affect the regional air quality emission analysis of the SFY2021-SFY2024 TIP; and

**WHEREAS**, the MVRPC Public Participation Policy for Transportation Planning process allows for minor TIP amendments such as this to occur without separate public involvement meetings; and

**WHEREAS**, this amendment will result in a TIP that is in reasonable fiscal constraint

**NOW THEREFORE BE IT RESOLVED**, that the Board of Directors of the Miami Valley Regional Planning Commission hereby adopts **Amendment #14** to the SFY2021-SFY2024 Transportation Improvement Program as shown on the attached TIP Tables.

**BY ACTION OF THE** Miami Valley Regional Planning Commission's Board of Directors.

---

**Brian O. Martin, AICP**  
Executive Director

---

**Chris Mucher, Chairperson**  
Board of Directors of the  
Miami Valley Regional Planning Commission

---

Date







## MEMORANDUM

**To:** Technical Advisory Committee, Board of Directors

**From:** MVRPC Staff

**Date:** November 8, 2021

**Subject:** Proposed New Projects Requesting MVRPC's STP, CRRSAA and TA Funds

The enclosed table shows all proposed new projects received as part of our solicitation for MVRPC regionally controlled funding under the Surface Transportation Program (STP), Coronavirus Response and Relief Supplemental Appropriations Act (CRRSAA) and Transportation Alternatives (TA) programs.

\* The proposed new project list is for information only at this time.

A public involvement meeting to present the proposed new projects requesting MVRPC's STP, CRRSAA and TA funds was held on November 4, 2021. A summary of public involvement comments is included as an attachment.

Federal funding request totals and total project costs are broken down by funding category below.

	<b>Funds Requested</b>	<b>Total Project Costs</b>
<b>STP</b>	<b>\$30,991,099</b>	<b>\$49,618,522</b>
<b>CRRSAA</b>	<b>\$4,826,047</b>	<b>\$8,046,217</b>
<b>TA</b>	<b>\$690,136</b>	<b>\$1,072,878</b>
<b>TOTAL</b>	<b>\$36,507,282</b>	<b>\$58,737,617</b>

- The next step in the process is to evaluate each proposed project based on the criteria established in MVRPC's STP/CMAQ/TA Policies and Procedures. After each project is ranked, a final list of recommended projects will be reviewed by the Technical Advisory Committee in February and then forwarded to the Board of Directors for final approval in March.



## CY2021 Summary of STP applications

Project Sponsor	Project Name	Project Location	Project Description	Federal Funds Requested	Total Project Cost
* Beaver Creek Township	Orchard, Yellowbrick and Factory Roads Resurfacing	Orchard Road from Dayton-Xenia Road to the dead end not including the US 35 limited access; Yellowbrick Road from Orchard Road to Factory Road; Factory Road from Shakertown Road to Indian Ripple Road.	Resurfacing. The portion of Orchard Lane south of Yellowbrick Road will be funded 100% Locally.	\$383,656	\$548,080
* City of Beaver Creek	Colonel Glenn Highway Resurfacing	Colonel Glenn Highway from the Beaver Creek west corp limit to Grange Hall Road.	Milling and resurfacing of the roadway. Also included is the installation of raised pavement markers.	\$591,840	\$764,800
City of Beaver Creek	Indian Ripple Road Widening Project	Indian Ripple Road from Baronwood Boulevard to Woodview East.	Widen the roadway to a three lane pavement section along with curb, gutter, storm sewer and an 8' wide path along the south side of the roadway.	\$1,284,000	\$2,465,000
City of Beaver Creek	Kemp Road Widening Project	Kemp Road from North Fairfield Road to Hanes Road.	The existing five lane section of Kemp Road will remain and will taper to three lane section to Hanes Road. This will include one through lane in each direction and a two way left turn lane. Along with this widening, a 5' wide sidewalk and an 8' wide sidepath will be included with the project. This roadway will also be improved with curb and gutter and storm sewer throughout the project.	\$1,670,270	\$2,861,100
City of Beaver Creek	North Fairfield Road Widening	North Fairfield Road from Fairwood Drive to Kemp Road.	Widen the roadway from an existing four lane pavement section to a five lane pavement section. The new center turn lane will improve safety and travel efficiency.	\$731,500	\$1,305,000
* City of Brookville	Wolf Creek Street Resurfacing	Wolf Creek Street from Arlington Road to Western Avenue.	Resurfacing including milling of the existing asphalt and placement of tack coat, new asphalt and pavement markings.	\$354,428	\$485,035

	City of Centerville	Centerville Station Road Improvements, Phase 1	Centerville Station Road from 600' east of Park East Drive to the Centerville East corp limit.	Widening from a two lane section to a three lane section. Also included is realignment of the road, replacement of a water line, installation of a multi-use trail and the installation of a retaining wall to stabilize the roadway along the hillside.	\$2,030,832	\$4,821,650
*	City of Centerville	Clyo Road Resurfacing	Clyo Road from Franklin Street to Alex-Bell Road.	Partial depth replacement of the entire roadway surface as well as new thermo-plastic lane traffic striping and pavement markers.	\$338,866	\$609,959
*	City of Clayton	Salem Street Resurfacing	Salem Street from Diamond Mill Road to Crestway Drive.	Resurfacing.	\$357,868	\$483,122
*	City of Dayton	East Monument Avenue Resurfacing	Monument Avenue from North Keowee Street to North Findlay Street.	Resurfacing including the removal of the existing wearing course of asphalt and replacing with an intermediate and surface course of asphalt along with items incidental thereto.	\$388,800	\$525,000
	City of Dayton	Salem Avenue Reconstruction, Phase 5	Salem Avenue from Emerson Avenue to Elsmere Avenue.	Rebuild the roadway including new street pavement, curb, sidewalk, street lights and catch basins. The section at Catalpa Drive will only be resurfaced as the curbs and walks were rebuilt in 2005.	\$2,006,250	\$2,975,000
	City of Dayton	Smithville Road Reconstruction	Smithville Road from US 35 to Huffman Avenue.	Reconstruction including new street pavement, curb, sidewalk, streetlights, traffic signal and catch basins.	\$2,218,214	\$3,160,260
	City of Dayton	West Third Street Reconstruction	West Third Street from Gettysburg Avenue to Almond Avenue.	Reconstruction including a road diet from a five lane section to a three lane section with a bike path. The project will update the asphalt surface, sidewalks, curb, lighting and traffic signals.	\$1,529,710	\$2,108,674
*	City of Englewood	Union Boulevard Resurfacing	Union Boulevard from Wenger Road to US 40.	Resurfacing.	\$369,246	\$535,140

*	City of Franklin	North Dixie Highway Resurfacing	North Dixie Highway from 250' north of Van Horne Avenue to Kenneth Koons Boulevard.	Roadway milling and resurfacing. Base repair will be completed prior to paving. Thermoplastic will be installed after paving.	\$397,440	\$496,800
	City of Huber Heights	Chambersburg Road West Improvements	Chambersburg Road from Old Troy Pike to the Huber Heights west corp limit.	Widen the existing roadway from 2 lanes to 3 lanes. An 8' sidewalk/bikepath will be constructed on the north side of the road along with curb on both sides, water main, and storm sewer as needed. Also, the vertical alignment of the roadway will be adjusted to eliminate a crest area in the pavement.	\$2,177,252	\$3,509,619
	City of Kettering	Dorothy Lane Resurfacing	Dorothy Lane from South Dixie Highway to Haig Avenue.	Milling and asphalt overlay. Also included is minor curb replacement, thermoplastic pavement markings and raised pavement marker installation.	\$1,534,464	\$2,557,440
	City of Kettering	Marshall Road Improvements	Marshall Road from East David Road to Wilmington Pike.	Milling and resurfacing of the roadway. The project will also include isolated repair of concrete curb and drive approaches and an 8' wide sidewalk on the north and west side of Marshall Road from Wilmington Pike to Claybourne Road and on Lincoln Park Boulevard from Marshall Road to North Marshall Road.	\$1,005,484	\$1,755,808
*	City of Kettering	Wilmington Pike Resurfacing	Wilmington Pike from Beaverton Drive to East Stroop Road.	The project includes replacing sections of curb that have deteriorated, milling of the roadway to remove the existing asphalt course and the placement of a new asphalt surface course on the roadway. Also included is the installation of new thermoplastic pavement markings and raised pavement markers.	\$593,714	\$1,227,271
*	City of Miamisburg	Dayton-Cincinnati Pike Resurfacing	Dayton-Cincinnati Pike from approximately Saxony Road to the Miamisburg south corp limit and Chautauqua Road from the east side of the Great Miami River to Dayton-Cincinnati Pike.	Roadway milling and resurfacing.	\$268,000	\$361,800
	City of Moraine	Kettering Boulevard Improvements	Kettering Boulevard from Hoyle Place to the Moraine north corp limit and Kettering Boulevard from West Stroop Road to SR 741.	Roadway resurfacing including isolated curb replacement, utility adjustments, and isolated partial depth pavement repair.	\$837,575	\$1,395,959

*	City of Piqua	Looney Road Resurfacing	Looney Road from CR 25A to US 36.	Roadway resurfacing including planing of the asphalt, adjustment of manholes and water valves, pavement repair areas, placement of an asphalt surface course and the placement of the final pavement markings.	\$597,507	\$746,884
*	City of Riverside	Spinning Road Improvements, Phase 2	Spinning Road from Eastman Avenue to Burkhardt Road.	Roadway resurfacing including the milling of the existing asphalt and placement of a tack coat, new asphalt, and pavement markings	\$508,596	\$1,021,051
*	City of Trotwood	Free Pike Resurfacing	Free Pike from the Trotwood east corp limit to Wolf Creek Pike.	Roadway resurfacing.	\$646,138	\$882,458
	City of Trotwood	Wolf Creek Pike Resurfacing	Wolf Creek Pike from Snyder Road to Nolan Road.	Roadway resurfacing.	\$214,686	\$298,176
*	City of Troy	East Main Street Resurfacing	East Main Street from Mulberry Street to the Troy east corp limit.	Roadway resurfacing including the milling of the existing asphalt and placement of tack coat, new asphalt and new pavement markings.	\$746,326	\$1,411,351
*	City of Vandalia	Webster Street Resurfacing	Webster Street from Little York Road to Stop 8 Road.	Roadway resurfacing including milling of the existing asphalt and placement of tack coat, new asphalt and pavement markings.	\$717,131	\$979,414
*	City of West Carrollton	East Dixie Drive Resurfacing	East Dixie Drive from Cedar Street to 342' east of Alex-Bell Road.	Roadway milling and resurfacing including SAMI Interlayer, pavement markings, traffic loop detectors, and manhole adjustments.	\$306,466	\$452,037
*	City of Xenia	East Market Street Roadway Improvements	East Market Street from US 68 to US 42.	Roadway resurfacing including mill and fill and full depth base repair as needed. Also included is repair or replacement of the existing and deteriorated curb, curb inlets and drive approaches.	\$406,741	\$636,638



GDRTA	Purchase of five replacement 30-35' diesel buses.	Dayton and surrounding communities.	Purchase buses to replace others that have come to the end of their useful life.	\$2,368,000	\$2,960,000
* Greene County Engineer	Federal Road Resurfacing	Federal Road from the Xenia east corp limit to Selma-Jamestown Road.	Resurfacing.	\$750,000	\$1,300,000
* Montgomery County Engineer	Mad River Road Resurfacing	Mad River Road from SR 725 to the Kettering south corp limit.	Roadway milling and resurfacing.	\$548,873	\$784,105
Municipality of West Milton	Hayes Street and Tipp Pike Traffic Signal	Intersections of North Miami Street and Tipp Pike and North Miami Street and Hayes Street.	Improvements include replacement of two traffic signals with pedestrian facilities, restriping, widening of the turn radii, and improving operations of the traffic signals for better traffic flow at these atypical intersections.	\$497,154	\$856,142
Municipality of West Milton	SR 48 and Frederick-Garland Intersection Improvements	SR 48 at Frederick-Garland Road.	Intersection improvements including the addition of left turn lanes for both the north and south approaches. Intersection radii will also be improved to accommodate turning vehicles.	\$859,664	\$1,394,740
MVRPC	Regional Supplemental Transportation Planning, SFY2027	Miami Valley Region.	Supplemental Planning Funding - includes TIP Project Management, Alternative Mode Transportation Planning and Project Planning Assistance.	\$594,034	\$742,542
MVRPC	Supplemental Regional Planning - SFY2027	Miami Valley Region.	Continuation of regional planning activities to support coordination/collaboration efforts in the region by providing planning process consultation, research and technical support.	\$160,374	\$200,467

Total STP Funds Requested: **\$30,991,099**

## CY2021 Summary of CRRSAA applications

Project Sponsor	Project Name	Project Location	Project Description	Federal Funds Requested	Total Project Cost
City of Beavercreek	Grange Hall Road Resurfacing	Grange Hall Road from Indian Ripple Road to Shakertown Road.	Milling and resurfacing the roadway. Also included is the installation of raised pavement markers.	\$391,716	\$460,240
City of Brookville	Market Street Resurfacing	Market Street from Wolf Creek Street to Jefferson Street.	Resurfacing including milling of the existing asphalt and placement of tack coat, new asphalt and pavement markings.	\$198,541	\$223,634
City of Centerville	Centerville Station Road Resurfacing	Centerville Station Road from Clio Road to Southbury Drive.	Partial depth replacement of the entire roadway surface as well as new thermo-plastic lane traffic striping and pavement markers.	\$196,789	\$408,716
City of Clayton	Phillipsburg-Union Road Resurfacing	Phillipsburg-Union Road from Shaw Road to Haber Road.	Resurfacing.	\$199,844	\$539,579
City of Dayton	McCall Street Resurfacing	McCall Street from Abbey Avenue to James H. McGee Boulevard.	Resurfacing including the removal of the existing wearing course of asphalt and replacing with a surface course of asphalt along with items incidental thereto.	\$315,900	\$315,900
City of Englewood	Union Boulevard Resurfacing	Union Boulevard from Wenger Road to the Englewood south corporation limit.	Resurfacing, excluding the bridge deck over I-70.	\$198,740	\$282,420
City of Fairborn	Dayton-Yellow Springs Road Improvements	Dayton-Yellow Springs Road from Skyhawk Court to Gateway Drive.	Concrete pavement repair with joint repairs and concrete panel replacement.	\$400,000	\$1,095,238

City of Germantown	Twin Creek Bikepath Resurfacing	Bikepath along Twin Creek from South Main Street to West Market Street.	Overlay with a light cape seal.	\$96,099	\$96,099
City of Kettering	Woodman Drive Resurfacing	Woodman Drive from Wilmington Pike to Stocker Drive.	Milling and resurfacing including isolated repair of the concrete curb, median and approaches.	\$392,786	\$629,982
City of Miamisburg	Union Road Resurfacing	Union Road from the Miamisburg south corp limit to Manning Road.	Milling and resurfacing.	\$199,280	\$228,960
City of Moraine	South Dixie Drive Resurfacing	South Dixie Drive from SR 741 to Stroop Road.	Resurfacing including partial depth replacement of the entire surface and pavement markings. Limited full depth pavement repair is also included as needed.	\$198,055	\$340,408
City of Riverside	Valley Street West Resurfacing	Valley Street from Pleasant Valley Avenue to Harshman Road.	Resurfacing including milling of the existing pavement and placement of tack coat, new asphalt and pavement markings.	\$199,362	\$462,655
City of Trotwood	Salem Bend Resurfacing	Salem Bend from Olive Road to Westbrook Road.	Resurfacing.	\$165,197	\$183,557
City of Troy	North Elm Street Resurfacing	North Elm Street from the Morgan Ditch bridge to the drive entrance of the Marathon Gas Station located at 801 West Main Street.	Resurfacing.	\$198,429	\$487,793
City of West Carrollton	East Central Avenue Resurfacing	East Central Avenue from Alex Road to Dixie Drive and Alex-Bell Road from Central Avenue to East Dixie Drive.	Milling and resurfacing including SAMI Interlayer, pavement markings, traffic loop detectors and manhole adjustments.	\$200,000	\$241,989

City of Xenia	Bellbrook Avenue Roadway Improvements	Bellbrook Avenue from South Allison Avenue to West Second Street.	Mill and fill and full depth base repair as needed. In addition, repair or replace the existing and deteriorated curb, curb inlets and drive approaches.	\$196,849	\$366,547
Greene County Engineer	Dayton-Yellow Springs Resurfacing	Dayton-Yellow Springs Road from the Fairborn east corp limit to the Yellow Springs west corp limit.	Resurfacing.	\$400,000	\$972,400
Miami County Engineer	Washington Road Resurfacing	Washington Road from SR 718 to SR 41.	Resurfacing including enhanced pavement markings and a 15" aggregate berm.	\$395,500	\$427,140
Montgomery County Engineer	Frederick Pike Resurfacing	Frederick Pike from the Dayton north corp limit to 500' east of Peters Pike.	Milling and resurfacing.	\$282,960	\$282,960

Total CRRSAA Funds Requested: **\$4,826,047**

## CY2021 Summary of TA applications

Project Sponsor	Project Name	Project Location	Project Description	Federal Funds Requested	Total Project Cost
City of Beavercreek	Shakertown Road Sidepath Project	Shakertown Road from Willow Run Drive to Ankeney Middle School.	Installation of an 8' wide sidepath along the south side of the roadway. Along with the sidepath, curb and gutter and storm sewer will be added along the south side of the roadway.	\$346,500	\$585,000
City of Dayton	East Third Street Transportation Improvements	East Third Street from Webster Street to North Keowee Street.	Add bumpouts for dedicated parking on the north side of the street, lighting on both sides of the street for an enhanced pedestrian experience and new curb and sidewalk along the corridor.	\$343,636	\$487,878

Total TA Funds Requested: **\$690,136**

## Arnold, Paul

---

**From:** Arnold, Paul  
**Sent:** Monday, October 18, 2021 10:05 AM  
**To:** 'jshrubsole@cedarville.edu'; 'bmerriman@ci.xenia.oh.us'; Miklasevich, Emily (EMiklasevich@greaterdaytonrta.org)  
**Cc:** Henry, Laura; Ramirez, Ana; Daniel, Bradley  
**Subject:** RE: Form submission from: Comments on Proposed Transportation Projects being considered for Federal Funding through MVRPC's Sub-allocated Federal Funds Process.

Mr. Shrubsole,

Thank you for your comments below on the proposed transportation projects being considered for Federal funding. We welcome the interest these projects have generated and will forward your comments to the projects sponsor and our Board for their consideration.

Paul Arnold  
Manager, Short Range Programs  
Miami Valley Regional Planning Commission  
10 North Ludlow St., Suite 700  
Dayton, Ohio 45402  
[parnold@mvrpc.org](mailto:parnold@mvrpc.org)

937.223.6323 - office  
937.531.6534 – direct line  
937.223.9750 – fax  
Like us on Facebook

-----Original Message-----

From: [webmaster@mvrpc.org](mailto:webmaster@mvrpc.org) [<mailto:webmaster@mvrpc.org>]  
Sent: Thursday, October 14, 2021 3:52 PM  
To: Arnold, Paul  
Subject: Form submission from: Comments on Proposed Transportation Projects being considered for Federal Funding through MVRPC's Sub-allocated Federal Funds Process.

Submitted on Thursday, October 14, 2021 - 15:51 Submitted by user: Anonymous Submitted values are:

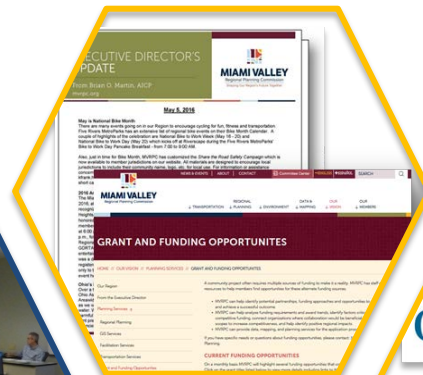
Comment: I would fully support the resurfacing work on E Market and Bellbrook Ave in Xenia. I would also support the replacement buses requested by GDRTA.

==Contact Information==

Name: Jon Shrubsole  
Address: 251 N. Main St  
City: Cedarville  
State: Ohio  
Zip Code: 45314  
Email Address: [jshrubsole@cedarville.edu](mailto:jshrubsole@cedarville.edu)







Regional  
GIS

Local  
Planning  
Support

GOING  
PLACES  
TOOLS

Regional  
Data and  
Profiles



# COMMUNITY PLANNING ACTIVITIES



MVRPC's interdisciplinary Community and Regional Planning team provides a range of professional planning services to our local communities in the Dayton metropolitan region for their successful planning and policy development efforts.

Whether working with staff, consultants, or other partner agencies, partnering with MVRPC allows our members to supplement and expand their in-house planning capacity.

Scroll through to view highlights of some of our recent and notable projects.

The logo for MVRPC SERVICES features a stylized graphic of four colored squares (blue, red, yellow, and green) arranged in a larger square pattern. To the right of the graphic, the text "MVRPC SERVICES" is written in a bold, blue sans-serif font.

## Planning Services

The Miami Valley Regional Planning Commission's interdisciplinary staff provides professional services to member organizations for their planning and policy development efforts.  
[mvrpc.org/planning-services](http://mvrpc.org/planning-services)

**MVRPC staff can participate and provide support in the development of transportation, land use, environmental, or strategic planning efforts. Whether working with your staff, consultants, or other partner agencies, MVRPC can supplement and expand your in-house planning capacity.**

**Research and Analytics** – MVRPC staff can conduct best practices research, perform robust data analysis, prepare data visualization materials, and provide mapping services.

**Consultant Procurement Support** – MVRPC staff can assist with project scoping, process development, and Request for Proposals (RFP) activities.

**Funding** – MVRPC staff can research grant funding opportunities and assist in Federal and State grant applications.

**Facilitation** – MVRPC staff can provide facilitation services to help groups develop solutions for a range of intra- or inter-jurisdictional issues.

Through a strategic partnership with MVRPC, you will have access to:

- Diverse expertise and experiences
- The latest planning decision support systems
- A neutral, third-party professional team who understands your community's unique challenges and needs

A map of the Miami Valley region showing the five counties: Clark, Hamilton, Greene, Montgomery, and Warren. The map is color-coded to show the boundaries of each county.

Established in 1964, the **Miami Valley Regional Planning Commission** promotes collaboration among communities, stakeholders, and residents to advance regional priorities and develop public policy and collaborative strategies to improve quality of life throughout the Miami Valley Region. MVRPC performs various regional planning activities, including air quality, water quality, transportation, land use, research and GIS. As the Designated Metropolitan Planning Organization (MPO), MVRPC is responsible for transportation planning in Greene, Miami and Montgomery Counties and parts of northern Warren County. MVRPC's statewide water quality planning designation encompasses five (5) counties: Clark, Preble plus the three MPO counties.

For questions, contact:  
Brian G. Martin, AICP, Executive Director  
email: [bmartin@mvrpc.org](mailto:bmartin@mvrpc.org)  
t 937.223.6323 | TTY/TDD: 800.750.0750  
10 North Ludlow St., Suite 700 | Dayton, Ohio 45402-1855  
[mvrpc.org](http://mvrpc.org)

The logo for the Miami Valley Regional Planning Commission features a stylized graphic of four colored squares (blue, red, yellow, and green) arranged in a larger square pattern. To the right of the graphic, the text "MIAMI VALLEY" is written in a large, bold, blue sans-serif font, and "Regional Planning Commission" is written below it in a smaller, blue sans-serif font.



<https://www.mvrpc.org/regional-planning/community-plans>



Perspectives 2040

# Perspectives 2040

The Greene County Future Land Use Plan Update

HOME ABOUT NEWS **Dayton Riverfront Plan** PROGRESS CONTACT / SUBSCRIBE

## Dayton Riverfront Plan

### Fall 2021 Progress Report

Oct 19, 2021

The vibrant redevelopment of downtown is spilling up, down and over our rivers to Dayton's neighborhoods along all points of the compass. The Dayton Riverfront Plan continues to spur this evolution: The Gem City Market has opened; proposals for redevelopment abound...

[Read More](#)



(937) 847-6686

[CONTACT](#)

[NEIGHBORHOODS](#) [HOW IT WORKS](#) [RESOURCES](#) [INFORMATION](#) [ABOUT](#)

IT'S ALL ABOUT

# COMMUNITY

**MAKE YOUR VOICE HEARD**

CLICK HERE to take the Seibert-Riverview-Curtis online survey.

HOME



[PLAN CONTENT](#) [PUBLIC PORTAL](#) [LIBRARY](#) [CONTACT US](#)

## A guide for future community development

# PLAN CLAYTON

### COMPREHENSIVE LAND USE PLAN

Ordinance No. O-04-18-08

Adopted by Council on May 3, 2018

## VISION 4 GOALS

Legacy | People | Context | Vision



Transforming the Greater Miami Chapel Neighborhood

## Renew Miami Chapel





# ELEVEN IMPLEMENTATION TOOLS

## PRIORITY #1

**Better Information for  
Stronger Decision Making**

## PRIORITY #2

**Strengthen Regional  
Collaboration**

## PRIORITY #3

**Build the Region's Capacity  
for Solution**



A SUMMARY OF  
**GOING  
PLACES**

AN INTEGRATED  
LAND USE VISION FOR  
THE MIAMI VALLEY REGION

MAY 2015



**MIAMI VALLEY**  
Regional Planning Commission



Going Places!



Vision?  
Implementation Tools?

Transformers!  
Cool!







# US CENSUS DATA

HOME // DATA & MAPPING // CENSUS DATA CENTER

## Census Data Center ↑

Census 2010 Regional Profile

2020 Census Resource Page

American Community Survey

Longitudinal Employer-  
Household Dynamics

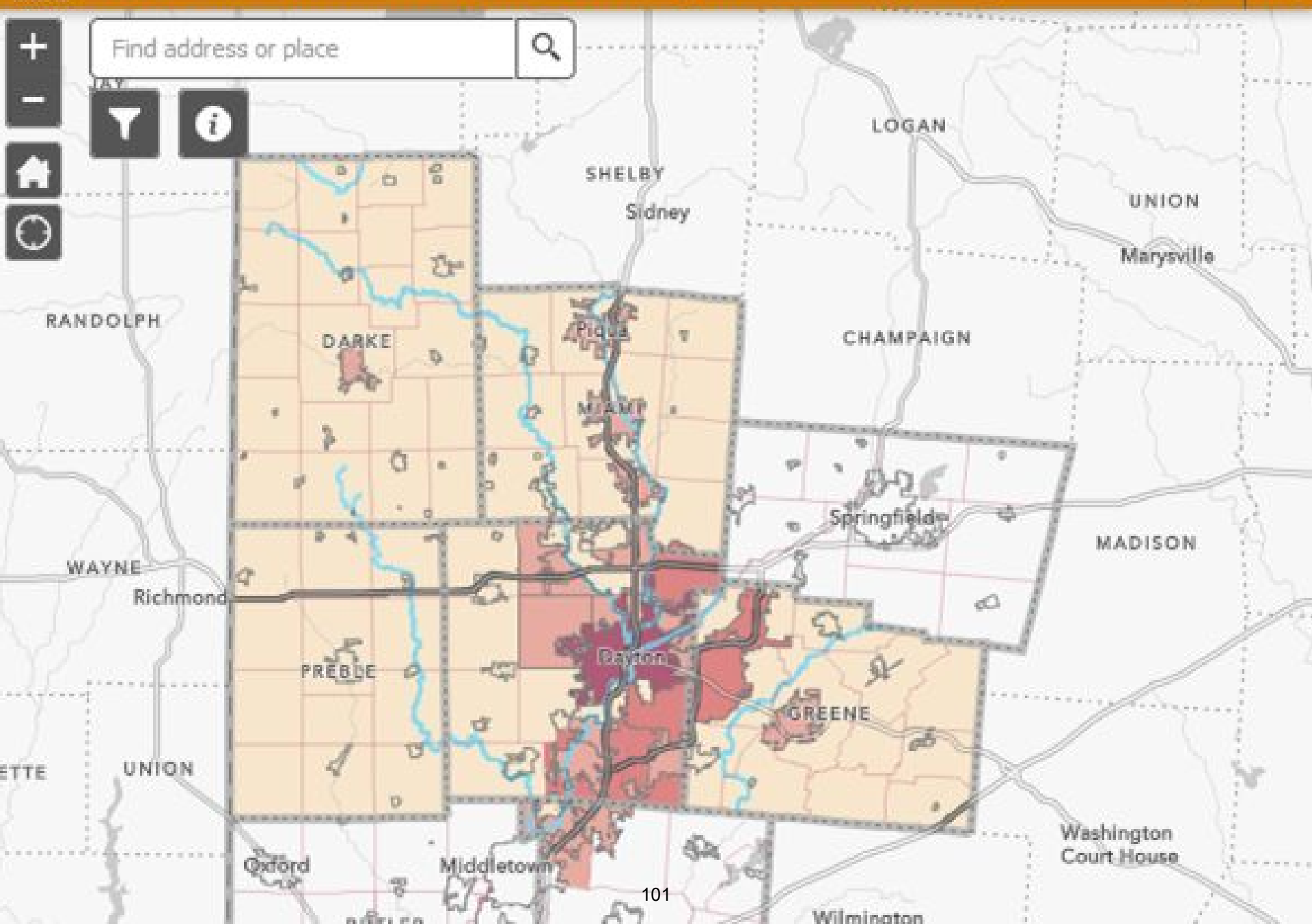
Geographic Information Systems  
(GIS) at MVRPC ↓

MVRPC is a Census Affiliate Organization. As such, we provide assistance to U.S. Census Bureau's various programs and maintain Census data for the Region dating from the most recent releases back to 1950. Please contact Elizabeth Whitaker, Senior Planner at 937.223.6323, if you have any Census-related questions, from requests for specific data to help navigating the Census website.

## 2020 CENSUS

The U.S. Census Bureau is continuing their work on the 2020 Census. Following the enumeration phase, information will be processed to deliver apportionment counts and redistricting data. Due to operational disruptions resulting from the COVID-19 pandemic, the timeline for delivery of 2020 Census data is fluid. For the latest information on the 2020 Census, please visit MVRPC's [2020 Census Resource Page](#).

<https://www.mvrpc.org/data-mapping/census-data-center/2020-census-resource-page>





## Welcome to the Miami Valley **Geo-Spark**, the place to find geographic data for the Miami Valley Region.

The "Geo-Spark" is the Miami Valley's central location for open data and interactive maps. Through this site, you can visualize regional data in map galleries or access GIS Open Data layers & maps.

# Explore our Open Data



All Data

### Browse GIS open data and maps for the Miami Valley.

Click a button below to view specific data types and web maps, or click the button to the left to access all of the data. You can use these same categories when searching for maps in the galleries below.

ArcGIS Online user? Check out our [Regional Resources](#) group for additional opportunities to share information.



Boundaries



Census



Environment



Land Use



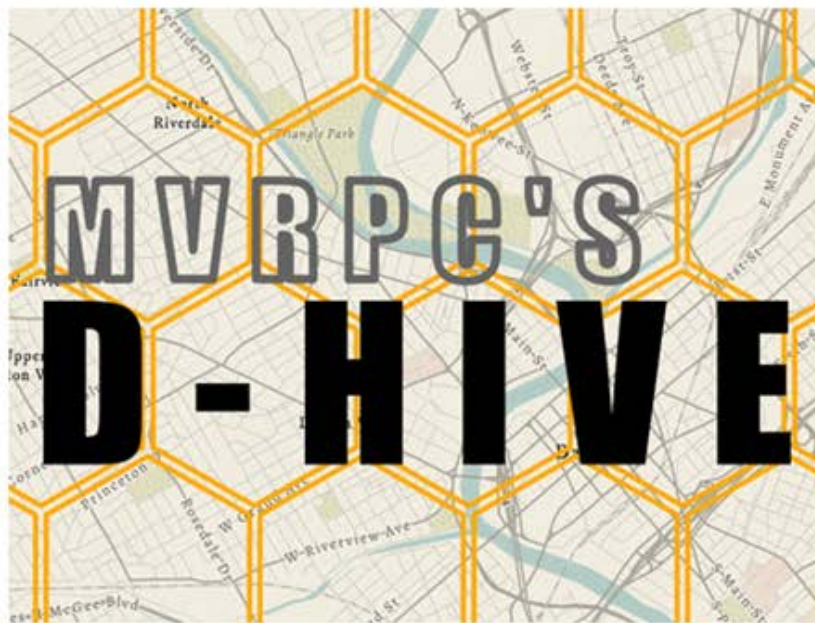
Transportation



All Web Maps

<https://geospark-mvrpc.opendata.arcgis.com/>





## Welcome to the D-Hive

MVRPC's D-Hive is a new data management & visualization system that takes advantage of a hexagonal cell pattern to integrate and combine different layers of regional geographic information. This system stores and displays layers that we have used before as well as creating new layers that reveal new insights about our region. Hexagons are an increasingly popular way to normalize geography, depict connectivity and movement, and add privacy by obscuring source data.

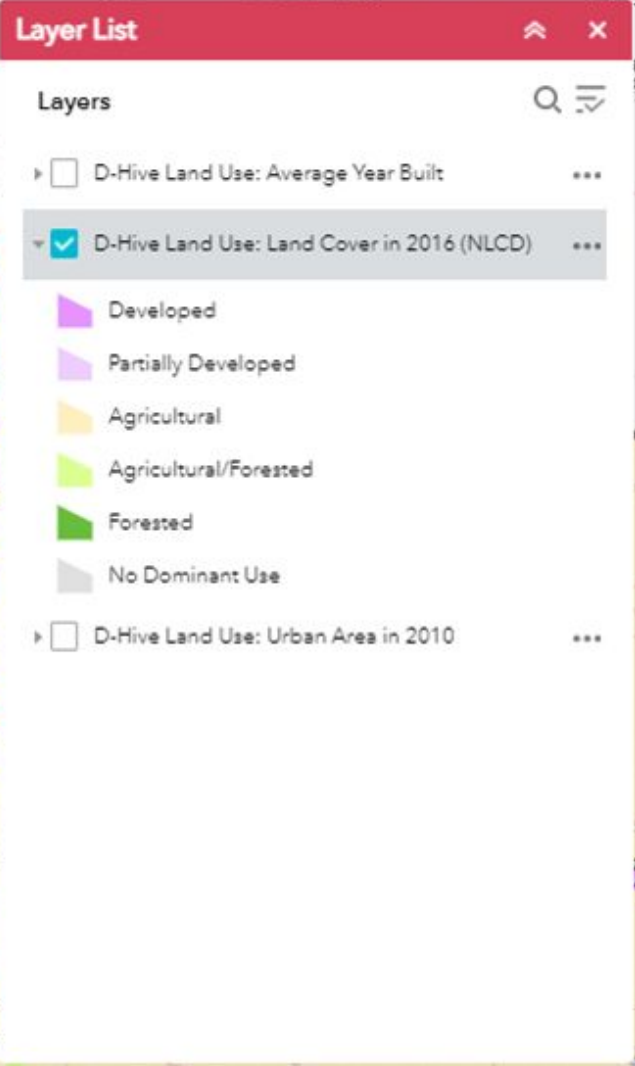
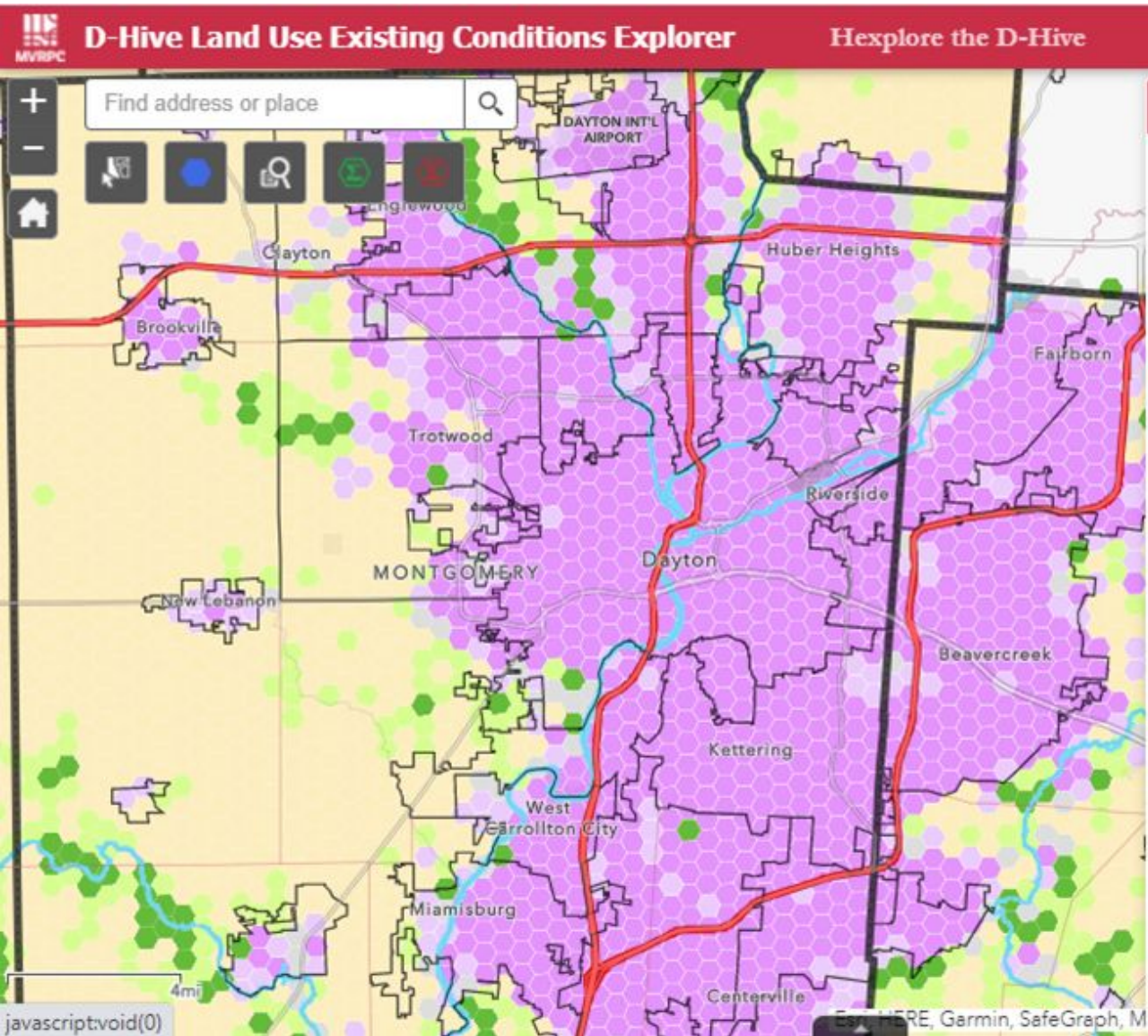
We have integrated GIS layers using the same categories as our open data into our hex network - stay tuned for more!

Click the button below to explore The D-Hive through GIS Open Data.

[Go to all the Data](#)

## Explore D-Hive maps & data







# PLANNING TOOLS

HOME // REGIONAL PLANNING // PLANNING SERVICES & RESOURCES // PLANNING TOOLS

## Planning Services & Resources ↑

Jeff Twp LU Strategic Planning

Open Space Planning

Greene County Future Land Use Plan

Regional GIS

## Planning Tools ↑

Plan Development & Resources

Plan by Subject

Plan Implementation

Geo-Spark

Welcome to MVRPC's Planning Tools page. This page provides planning practitioners with a range of tools, resources, and best practices to enhance planning outcomes across the Miami Valley.

The planning tools are categorized into three themes: Plan Development & Resources, Plan by Subject, and Plan Implementation. A variety of resources can be found under each topic. We will continue to update this site with additional resources as needed.

### Plan Development & Resources:

Project Scoping | Public Engagement | Scenario Planning | GIS | Strategic Planning | Planning Decision Support Systems

### Plan by Subject:

Comprehensive | Land Use | Housing | Community Development | Site | Economic Development | Farmland Preservation

### Plan Implementation:

Zoning | Return on Investment

For additional information, please contact Martin Kim, Director of Community & Regional Planning at [mkim@mvrpc.org](mailto:mkim@mvrpc.org).

<https://www.mvrpc.org/regional-planning/regional-planning-services/planning-tools>

## Comprehensive Plan

## Land Use Plan

A land use plan provides guidance on where and how land should be used based on a community's need to balance the need for development with resources.

Ohio has developed a toolkit to help support location of growth, and guidance on [best practices](#) for protecting clean water wherever the expansion occurs.

The [Land Based Classification Standards](#) (LBCS) use type into multiple dimensions, such as land use types, site development character, and ownership.

[Congress for the New Urbanism \(CNU\)](#) helps cities, towns, and neighborhoods where people live, work, shop, and get around.

[APA Policy Guide on Smart Growth](#) defines strategies to achieve it, including economic development planning structures.

[Smart Growth America](#) works with elected chambers of commerce, transportation and infrastructure governors, and leaders in Washington to improve across the country through better development.

The purpose of [Jefferson Township Future](#) project was to develop a place-based future action steps that reflect Jefferson Township community goals, future land use vision, and outcomes.

## Housing Plan

## Community Development

## Project Scoping

## Public Engagement

Public engagement is a key part of the plan necessary for all stages of planning, from vision to implementation. Good public engagement which solicit meaningful input while also providing information.

The [Public Engagement: A Primer](#) provides the framework for meaningful public engagement.

[The Basics of Public Engagement](#) offers resources and officials for successful public engagement. It also concerns for difficult situations in public engagement.

[Principles of Local Government Public Engagement](#) outlines principles of effective public engagement for local governments.

This [Public Participation Guide](#) offers a step-by-step undertaking successful public participation effort by identifying the appropriate stakeholders, determining what model to use, and how to use what you gather from a decision-making process.

This [Community Engagement toolkit](#) guides users through the engagement process, including designing and implementing participation events.

## Scenario Planning

## Geographic Information Systems

## Strategic Planning

## Planning Decision Support Systems

## Zoning

Zoning is a tool used by local governments to determine which types of land uses are permitted or prohibited. Zoning may regulate how the land can be used, how buildings can be situated on the land, and how buildings relate to their surroundings.

[Land use zoning](#) in the United States refers to complex municipal laws about what can be placed where in cities and towns. This website explores a range of topics related to common land use regulation mechanisms.

[Illustrating the Zoning Ordinance](#) identifies common terms, clarifies zoning concepts with illustrations and provides examples to simplify the written zoning ordinance.

The [Form-Based Codes Institute \(FBCI\)](#) is a professional organization dedicated to advancing the understanding and use of form-based codes.

As a form-based code, the [SmartCode](#) is a model transect-based planning and zoning document based on environmental analysis that addresses all scales of planning, from the region to the community to the block and building.

[Essential Smart Growth Fixes for Urban and Suburban Zoning Codes](#) aims to help communities looking for smaller fixes within existing codes and ordinances that will help them become more sustainable.

In recent years Cincinnati has moved away from traditional zoning to a form-based code. This [report](#) is a resource that defines form based codes, provides case studies, and lists ways to integrate within the city's code.

[MVRPC's Zoning Mapping Application](#) features a standardized and generalized regional zoning depicting land use type for Montgomery, Miami, Greene, Warren, Clark, Darke, and Preble Counties and was last updated in 2015.

## Return on Investment







# EXECUTIVE DIRECTOR'S UPDATE

From Brian O. Martin, AICP  
mvrpc.org



**November 4, 2021**

## **2050 Long Range Transportation Plan: Executive Summary**



The Executive Summary for the 2050 Long Range Transportation Plan (2050 Plan) is now available to download:

[https://www.mvrpc.org/sites/default/files/mvrpc\\_lrtp\\_2021\\_exec\\_summary.pdf](https://www.mvrpc.org/sites/default/files/mvrpc_lrtp_2021_exec_summary.pdf)

The Plan is developed through a collaborative process and it includes projects that reflect the shared values of the Region. Several new initiatives were incorporated into the 2050 Plan update and some of them are highlighted in the Executive Summary including: the Federal Performance Management Approach, Scenario Planning, and a new [Congestion Management Projects dashboard](#). In addition, to viewing details about individual projects, the dashboard allows users to select projects by sponsor jurisdiction and create summaries (number of projects and cost) and location with respect to

environmental justice and other vulnerable populations.

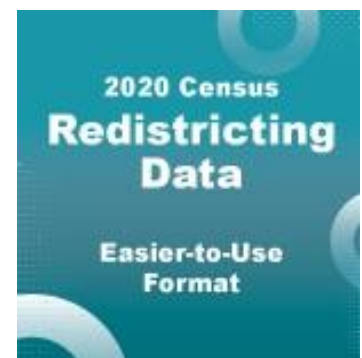
The 2050 Plan meets the federal transportation requirements, continues to move the Region's multimodal transportation system forward, and is tailored to the unique needs of the Dayton Region.

## **2020 Census Updates**

On September 16, 2021 the Census Bureau released the 2020 Census Redistricting Data in an easier-to-use format. This data is available on their data sharing platform, [data.census.gov](https://data.census.gov). This information is identical to the "legacy format" data set that was released in August on the Census Bureau's FTP site.

The 2020 Redistricting Data is not inclusive of all information collected during the 2020 Census. This data set includes the following information down to the census block level:

- Total population
- Race and ethnicity information
- Population 18 years and older
- Occupied and vacant housing units
- Group quarters population



The Census Bureau is continuing to process data to ensure high quality products. Additional 2020 Census data is not expected to be released until 2022.

MVRPC staff will continue to monitor developments related to the 2020 Census and provide updates as needed. You can visit MVRPC's 2020 Census Resource Page at [www.mvrpc.org/data-mapping/census-data-center/2020-census-resource-page](https://www.mvrpc.org/data-mapping/census-data-center/2020-census-resource-page) for the latest information. Data products currently available through the MVRPC 2020 Census Resource page include:

- Data visualizations from the Census Bureau
- Interactive maps with county and jurisdiction level population counts and change since 2010
- County and community level population summaries for a 10 county area
- Demographic data by county subdivision and place for the MVRPC 5+ county area

- [Links to 2020 Census boundary files](#)

If you need assistance or have a question on Census data, please contact Elizabeth Whitaker, Senior Planner at [ewhitaker@mvrpc.org](mailto:ewhitaker@mvrpc.org)

## MiamiValleyRoads.org

MVRPC created [MiamiValleyRoads.org](http://MiamiValleyRoads.org) to provide updates on major construction projects that could impact commutes throughout the Region. It also provides user-friendly access to route planning tools, commute solutions and other ideas to reduce congestion and prevent air pollution for the areas under construction.

### The US 35 and Factory Road Superstreet Intersection set to open to Traffic

Pending no delays due to weather, the US 35 Superstreet at Factory Road will be in its final configuration by early November. Once the Restricted Crossing U-Turn (RCUT) and loons are open to traffic, motorists traveling on either Factory Road or Orchard Lane will be required to turn right onto US 35 and either continue to the nearby loon, where they can make a legal U-turn and proceed on US 35 in the opposite direction, or return to either of the side streets. Left-turn movements from US 35 to either Factory Road or Orchard Lane will be permitted, and traffic will be controlled by signals.

The US 35 Superstreet project calls for the elimination of the conventional at-grade crossings of Factory Road and Orchard Lane by constructing signalized Restricted Crossing U-Turn (RCUT) intersections. By reducing the number of conflict points and providing for a more efficient movement of traffic, superstreets serve to decrease congestion, cut down on delays, limit collision opportunities, and, in turn, improve safety. The contractors will then return next spring to complete final paving operations, striping, and raised pavement marker installation.

To learn more about this project, visit:

<https://www.transportation.ohio.gov/wps/portal/gov/odot/projects/projects/102421>

The screenshot displays the ODOT project page for the U.S. 35 Superstreet project. The header includes the ODOT logo and navigation links: ABOUT US, TRAVELING, PROJECTS, PROGRAMS, and BUSINESS. A search bar is located on the right. The main content area features the project title "U.S. 35 Superstreet" with a location pin icon and the text "Greene". Below the title, project details are listed: Project ID: 102421, Work Category: Intersection Improvement (Safety), Est. Const. Cost: \$14,050,000, Begin Construction: Spring 2019, and End Construction: Spring 2022. A large photo shows the construction site with orange traffic barrels and a "WATCH FOR WORKERS & TRUCKS" sign. To the right of the photo is a "LEAVE A COMMENT" button and a "Project Contact Information" section with a link to "District 8 Public Information" and the phone number (513) 933-6517. Below the photo is a "Project Status" section with a progress bar showing five stages: Proposed, In Development, Pre-construction, Construction, and Completion. The "Construction" stage is currently active. To the right of the progress bar is an "Attachment" section with a link to "US 35 Superstreet Rendering.pdf" (5.99 MB) and a "DOWNLOAD" button.

For a complete list of major construction projects provided by ODOT District 7 and 8 for the Region, visit [MiamiValleyRoads.org](http://MiamiValleyRoads.org). Follow MVRPC's [Facebook](#) and [Twitter](#) pages for project update posts.

## Grants & Funding Resources

On a monthly basis MVRPC is highlighting several funding opportunities on our website that could benefit communities in the Region. We include a description, contact information and program links. We have also listed other valuable resources for finding funding opportunities.

See more at: [mvrpc.org/grant-and-funding-opportunities](http://mvrpc.org/grant-and-funding-opportunities)

This month we are featuring information on:

- Brownfield Clean Up Grants (U.S. EPA)– Deadline: December 1, 2021
- Solid Waste Management Grants for Rural Communities– Deadline: December 31, 2021

If you have any questions please contact Kathryn Youra Polk at [kyourapolk@mvrpc.org](mailto:kyourapolk@mvrpc.org).

## Upcoming MVRPC Meetings

Please check the agency calendar on [www.mvrpc.org](http://www.mvrpc.org) or contact Savannah Diamond at [sdiamond@mvrpc.org](mailto:sdiamond@mvrpc.org) for the status of your meeting.

Date	Time	Meeting	Location	Staff
11/1-11/30	1:30 p.m./5:00 p.m.	Active Transportation Plan Listening Sessions	Various Locations ( <a href="https://www.mvrpc.org/news">https://www.mvrpc.org/news</a> for locations)	M. Lindsay S. Anderson
11/2	10:00 a.m.	GRMI Council Meeting	Montgomery County Business Center 1435 Cincinnati St., Suite 300, Dayton	E. Baxter
11/4	8:30 a.m.	MVRPC Executive Committee	Dayton Realtors 1515 S. Main St., Dayton	S. Diamond
11/4	9:00 a.m.	MVRPC Board of Directors	Dayton Realtors 1515 S. Main St., Dayton	S. Diamond
11/4	5:00 p.m.	Public Participation Meeting: Transportation Projects	Will be held via teleconference <a href="https://us02web.zoom.us/j/82578762606">https://us02web.zoom.us/j/82578762606</a>	P. Arnold
11/11	9:30 a.m.	Disaster Recovery Impacted Jurisdictions	The Dayton Foundation/ UD Fitz Center 1401 S Main St., Dayton	S. Schweikhart
11/15	6:30 p.m.	Public Participation Meeting: Water Quality Management Plan	Wayne Lakes Park 1052 Main Dr., Greenville, OH	M. Lindsay
11/18	9:30 a.m.	MVRPC Technical Advisory Committee	Dayton Realtors 1515 S. Main St., Dayton	S. Diamond
11/23	2:30 p.m.	Regional Equity Initiative Meeting	Will be held via teleconference <a href="https://us02web.zoom.us/j/83798452238">https://us02web.zoom.us/j/83798452238</a>	B. Martin

\*Meetings are sometimes cancelled. Visit [mvrpc.org](http://mvrpc.org) for up to date meeting information.