

A decorative vertical pattern of light blue wavy lines on the left side of the slide.

7th Readjustment of Benefits

MVRPC TAC

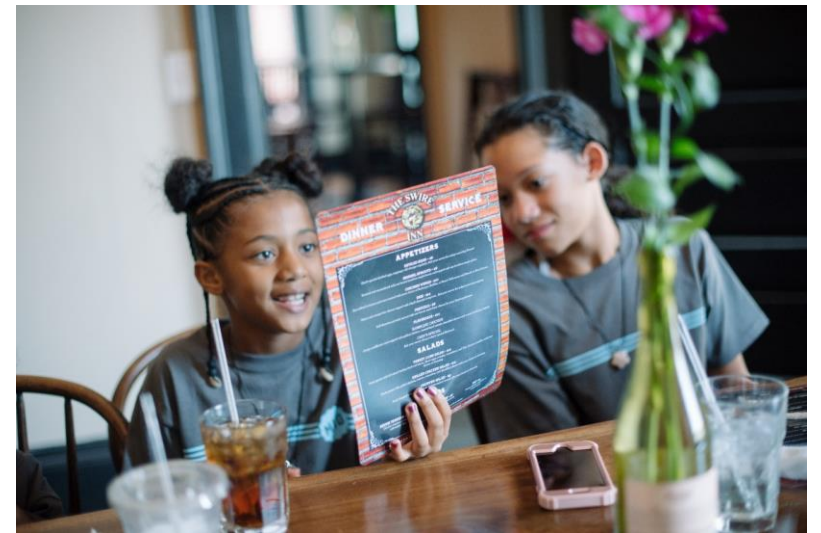
Sarah Hippensteel Hall, PhD - March 7, 2024



THE MIAMI
CONSERVANCY
DISTRICT

What is protected by MCD?

- 1 Million people
- More than 47,000 properties in five counties
- More than \$5.1 billion worth of buildings and land
- 6 hospitals
- 60+ schools and colleges
- 814 miles of public roads
- 14 wastewater treatment plants
- 9 water treatment plants
- Drinking water resources
- Outdoor recreation





THE MIAMI
CONSERVANCY
DISTRICT

MCD's Integrated System

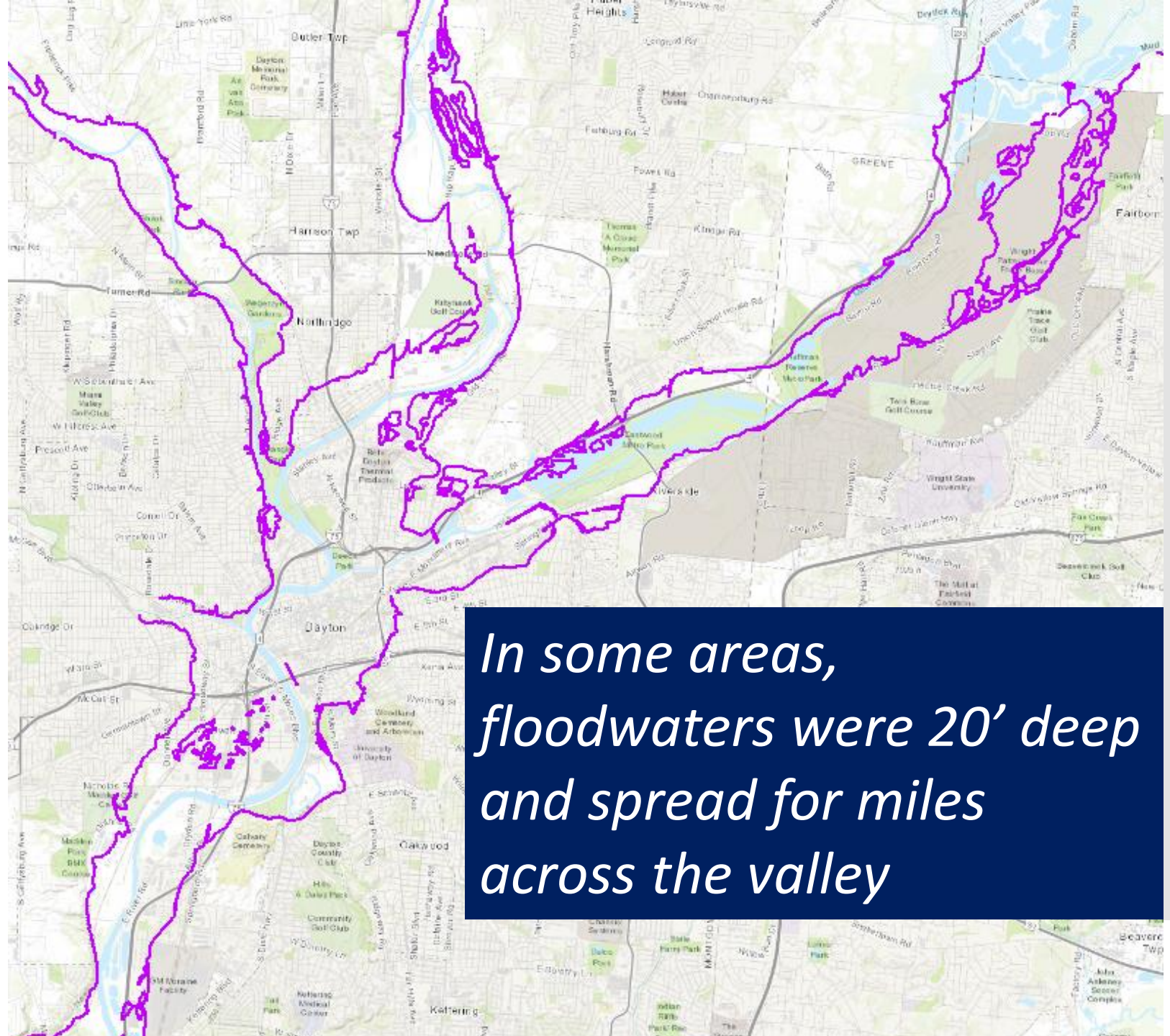
- 5 dry dams
- 55 miles of levees and floodwalls
- 185 floodgates
- 1,100 acres of floodplain
- 35,000 acres of land that store water
- Improved channels in cities





THE MIAMI
CONSERVANCY
DISTRICT

Protect for the
Great Flood
plus 40% more



*In some areas,
floodwaters were 20' deep
and spread for miles
across the valley*



THE MIAMI
CONSERVANCY
DISTRICT

Risk to flood protection: Climate

Total storage events by decade





THE MIAMI
CONSERVANCY
DISTRICT

Risk to flood protection: Age





THE MIAMI
CONSERVANCY
DISTRICT

How is Flood Protection funded?

- **Funded by assessments to property that flooded in 1913 and now benefit from protection**
- Individual properties
 - Pay annual assessment
- Local governments (5 counties & 22 communities)
 - Pay unit assessment
- Other
 - Grants
 - Low interest loans





THE MIAMI
CONSERVANCY
DISTRICT

How are other programs funded?

- **Water Stewardship**

- Aquifer Preservation Subdistrict
- Nine counties are assessed

- **Recreation**

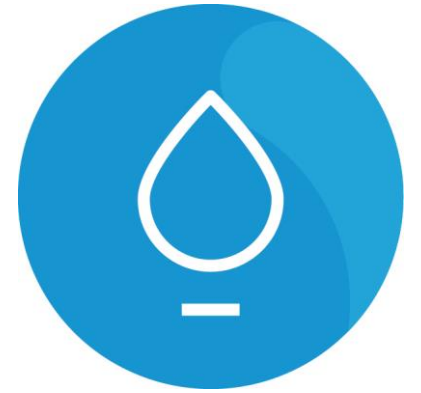
- River Corridor Improvement Subdistrict
- X communities are assessed

- **Additional income**

Grants

Sponsorships & donations

Agreements & contracts

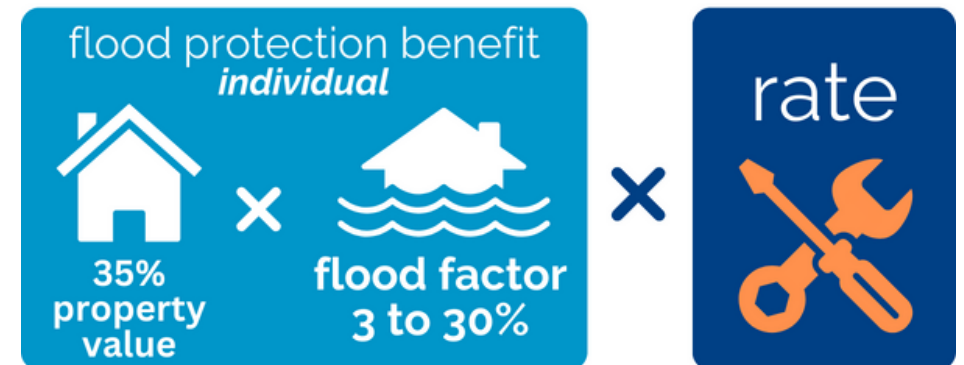




THE MIAMI
CONSERVANCY
DISTRICT

Individual Assessment

- Individual properties that flooded in 1913 **and benefit from MCD's flood protection system**
- Calculated by:
 - Property tax value established by county auditors
 - Depth of flooding in 1913
 - Special factors: wet percent, building site flooded, building height
- Assessment rate is then applied to the benefit

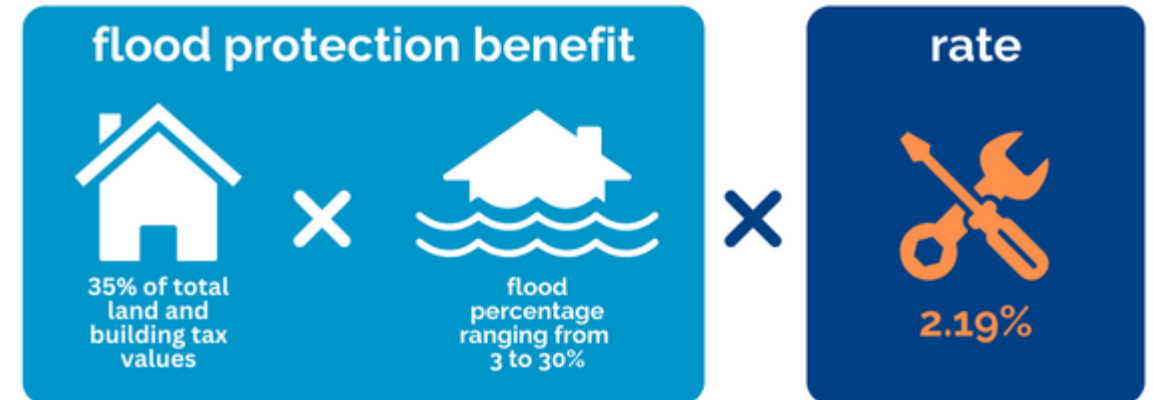




THE MIAMI
CONSERVANCY
DISTRICT

Unit Assessments

- Municipalities and counties that flooded in 1913 **and benefit from MCD's flood protection system**
- Calculated on a percent of total individual benefit
- Property owned by a municipality or county is exempt if expressly for a government purpose; such as city hall or a fire station.





THE MIAMI
CONSERVANCY
DISTRICT

What does it pay for?

- **Maintenance Assessment** for operations, maintenance, and repairs
 - Revenues remained mostly flat for 12 years
- **Capital Assessment** for rehab
 - Dam Safety Initiative expired in 2022

2,140

total times the
Miami Conservancy District
Dams have
stored floodwaters



THE MIAMI
CONSERVANCY
DISTRICT

How does the funding stay up to date?

- Readjustment of the Appraisal of Benefits
- Helps determine assessment fees
- Can occur once every 6+ years
- Ensures fair distribution of costs
 - New buildings and businesses paying an assessment on what was previously an empty lot
 - Takes some of the financial burden off individual households



THE MIAMI
CONSERVANCY
DISTRICT

Schedule

MAY
2023

Benefits methodology
approved by MCD Board
of Appraisers

FEB
2024

Appraisal Record certified
by MCD Board of
Appraisers

MAR
2024

MCD Board of Directors
sets assessment rate

MAR
2024

Property owners notified

JUL
2024

Conservancy Court
considers Appraisal
Record and rate

SEPT
2024

MCD files assessments
with County Auditors

2025

Assessments collected



THE MIAMI
CONSERVANCY
DISTRICT

Our Work



Preserve

Our Aquifer Preservation Subdistrict supports stewardship of the region's water resources.



Protect

Our Main District is responsible for an integrated flood protection system that significantly reduces flood risk from the Great Miami River.



Promote

The River Corridor Improvement Subdistrict enhances and promotes public use and enjoyment of river corridors.