

# Institute for Livable and Equitable Communities

October 12, 2022



**MIAMI VALLEY**

Regional Planning Commission

**INSTITUTE FOR LIVABLE & EQUITABLE COMMUNITIES**

# Institute for Livable and Equitable Communities

## **Vision**

The Institute places an intentional focus on livability and equity, launching programs and transforming systems that create a community where all people can thrive.

## **Mission**

The Institute for Livable & Equitable Communities at the Miami Valley Regional Planning Commission (MVRPC) convenes critical partners and is the central point of coordination for a long-term, multi-faceted effort to address nine domains proven to enhance livability and equity in communities.

# Institute for Livable and Equitable Communities

## INSTITUTE STEERING COMMITTEE

REGIONAL EQUITY INITIATIVE

REGIONAL EQUITY INITIATIVE  
SUB-COMMITTEE

RACIAL EQUITY TASK FORCE

NEEDS OF  
UNDERSERVED  
COMMUNITIES  
& STRATEGIC,  
INTENTIONAL  
ENGAGEMENT

LIVABLE COMMUNITIES INITIATIVE

REGIONAL LIVABLE COMMUNITIES  
SUB-COMMITTEE

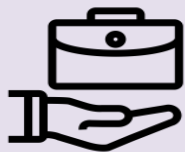
MIAMI VALLEY AGE-FRIENDLY COMMUNITIES  
NETWORK

## INSTITUTE DOMAINS

ALWAYS APPROACHED USING THE LENS OF IMPROVING BOTH LIVABILITY AND EQUITY



EDUCATION



ENTREPRENEURSHIP,  
EMPLOYMENT &  
VOLUNTEERING



ENGAGEMENT



HEALTH &  
ENVIRONMENT



HOUSING



NEIGHBORHOOD



SAFETY &  
JUSTICE



TECHNOLOGY &  
CONNECTIVITY



TRANSPORTATION

# Creating the Institute

- MVRPC Bylaws 5/6/2021 update adds an Institute for Livable and Equitable Communities Steering Committee (ISC)
- 13 members approved by MVRPC Executive Committee and Board of Directors
  - At least 10 Delegates from MVRPC Board of Directors
  - No more than 3 Institute Funders
- Chairperson serves 2 years
- Other members serve 1 year renewable terms

# ISC Duties & Responsibilities

1. Provide oversight, guidance and advisory leadership to accomplish vision and mission
2. Establish strategic direction and set priorities in the Institute's Work Plan
3. Establishes a process for selecting REI and RLC delegates
  - Confirms whether current REI members desire to continue under the new structure
4. Evaluate and explore evidence based solutions
5. Ensure sustainable operations strategy and alignment of resources
6. Advocate for funding, legislation and policy adoption
7. Offer formal motions of support, recognition, and commendation for efforts aligned with Institute priorities.

# Regional Equity Initiative



**MIAMI VALLEY**

Regional Planning Commission

**INSTITUTE FOR LIVABLE & EQUITABLE COMMUNITIES**



# Institute for Livable & Equitable Communities

## VISION:

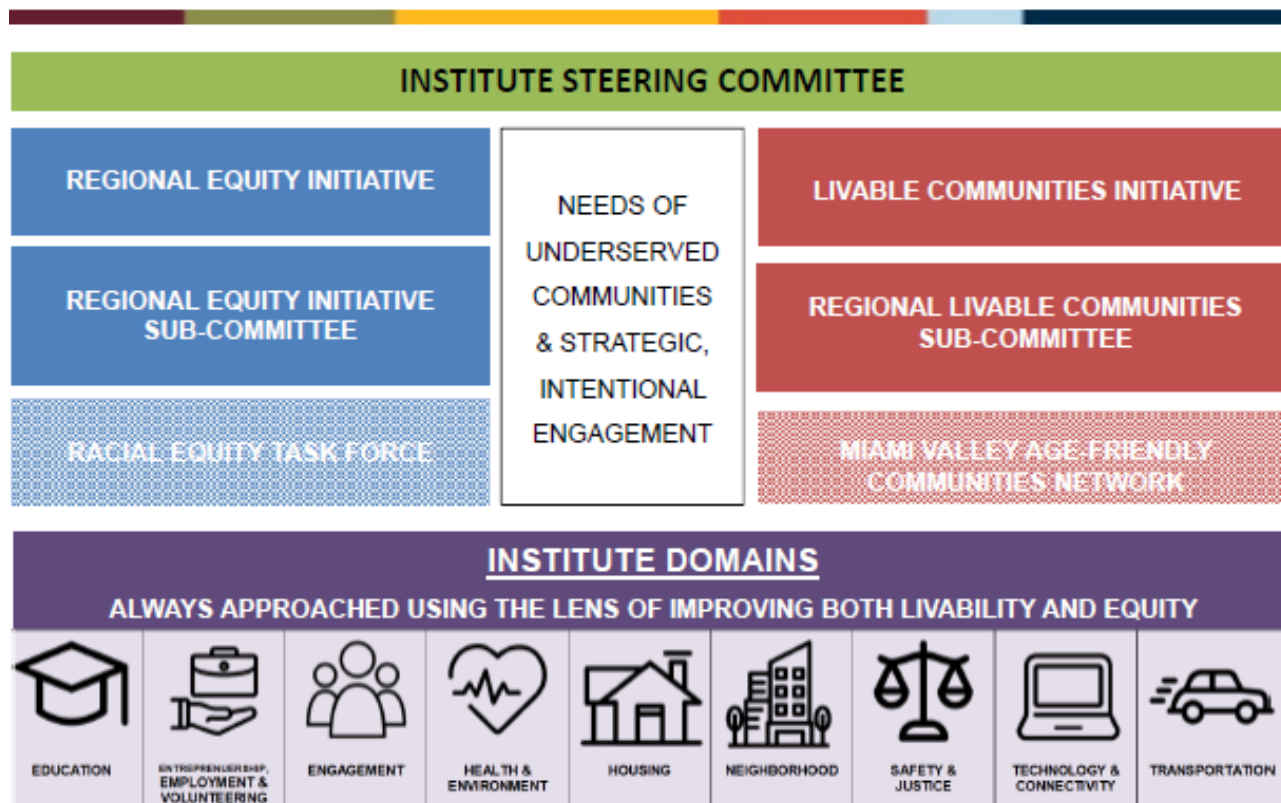
The Institute for Livable & Equitable Communities at the Miami Valley Regional Planning Commission (MVRPC) places an intentional focus on livability and equity, launching programs and transforming systems that create a community where all people can thrive.

## MISSION:

The Institute convenes critical partners and is the central point of coordination for a long-term, multi-faceted effort to address nine domains proven to enhance livability and equity in communities.



## Institute for Livable and Equitable Communities





**Livable *AND*  
Equitable**



# Regional Equity Initiative

- Correcting policies; reforming institutions; and closing the gaps that undermine sustained quality of life improvements for underserved communities and vulnerable populations.
- Under the leadership of the Institute Steering Committee
- Regional Equity Initiative Subcommittee
  - Group of about 20 regional leaders who identify as equity advocates
  - Meet monthly, every fourth Tuesday of the month from 2:30PM to 4:00PM (open to the public)

# Our Definition of Equity

- Equity: A condition of parity that is achieved by being intentional about improving quality of life for populations that are underserved, under-resourced, and vulnerable.
- Informed by three questions:
  - Are there deficits?
  - Who experiences the burden of the deficits?
  - How do we make sure well-intentioned interventions do not make deficits worse (and actually serve to make optimize positive impact)?

# Some of Our Current Efforts

- Establishing regional representation across the Miami Valley
- Advancing environmental justice for most vulnerable communities
- Pursuing broadband equity and digital literacy

# How We Support Others: Complement & Supplement

## Internal Examples:

- Plan4Health Initiative
- Broadband Infrastructure
- DEIB Engagement

## External Examples:

- Community Needs Assessments
- Comprehensive Land Use Planning
- Regional Equity Calendar



**Separating the angst, guess-work, and uncertainty around equity that impedes progress and impact.**



**How does all this  
relate to age-  
friendliness?**

## **Benefits for local government & public service emphasizing diversity, equity, and inclusion (MRSC)**

Improved decision-making that better represents all communities and is less likely to suffer from unintentional blind spots and biases,

Increased community trust in local government by offering more options for community members to be seen and heard as well as to better understand local government initiatives,

A more equitable allocation of public resources to all communities,

Increased trust between community members by offering citizens more opportunities to interact with one another, and

Improved employee satisfaction, reducing staff turnover, and increasing employee engagement and awareness.



# **Here To Serve You & Your Communities!**

[fjuin@mvrpc.org](mailto:fjuin@mvrpc.org) | 937-531-6552



# Being A Part of the Solution...

- Visit the Municipal Research & Service Center's DEI Resources for Local Governments
- Leverage the Affordable Connectivity Program and student loan forgiveness opportunities
- Get in touch with the Institute for Livable & Equitable Communities and stay tuned for what's to come!

# Age-Friendly Network



**MIAMI VALLEY**

Regional Planning Commission

**INSTITUTE FOR LIVABLE & EQUITABLE COMMUNITIES**

# Age-Friendly Network



**BOARD OF DIRECTORS**

**INSTITUTE STEERING COMMITTEE**

**REGIONAL EQUITY INITIATIVE**

**MIAMI VALLEY AGE-FRIENDLY NETWORK**

## **Mission:**

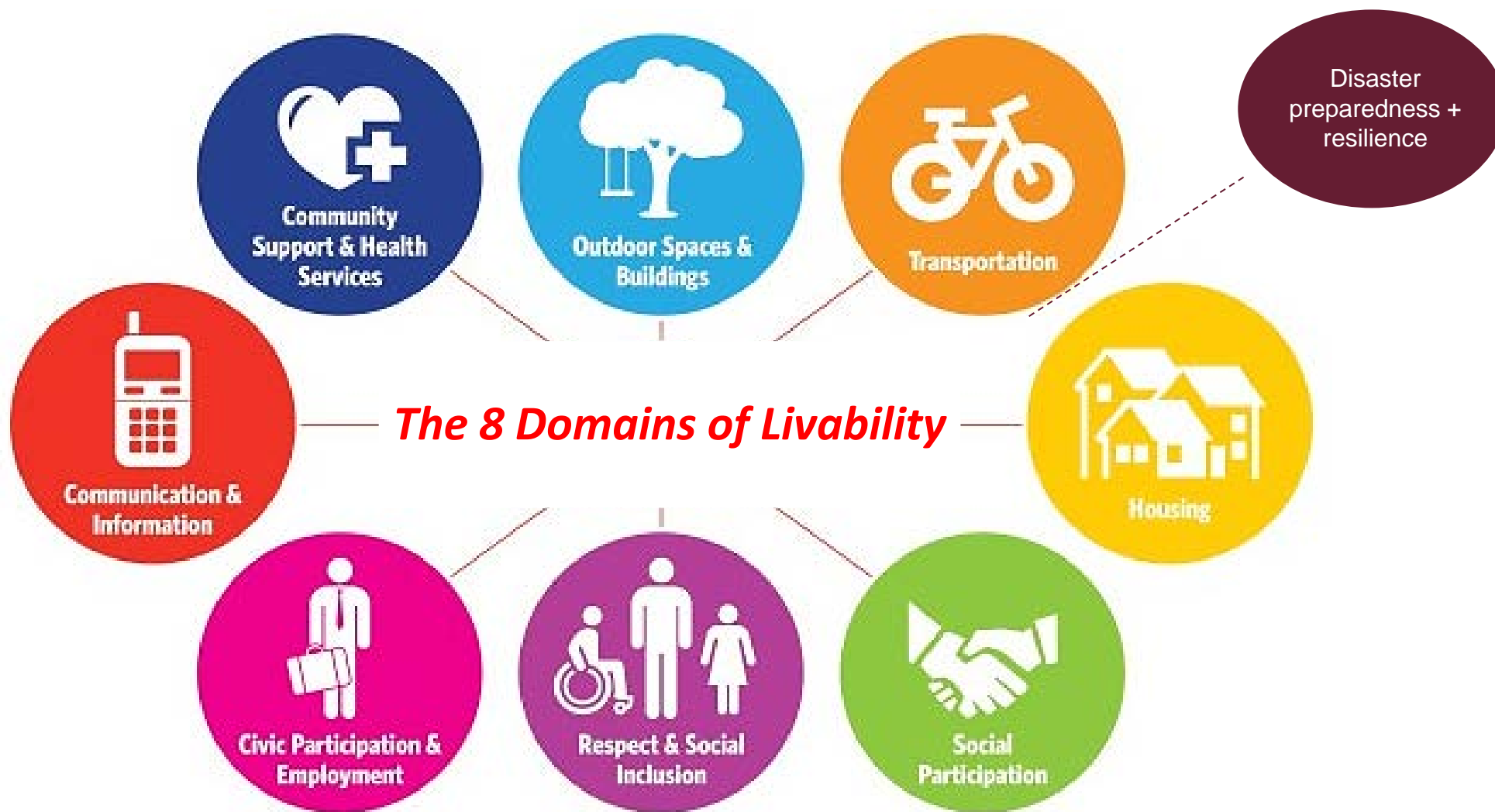
The Miami Valley Age-Friendly Network is a coalition of communities, partners and stakeholders who work together to establish and implement age-friendly strategies for our region.

## **Vision:**

Becoming an age-friendly region means that, together, we strive to make changes in our communities to ensure that we can all live better as we age.



# What is an Age-Friendly Community?



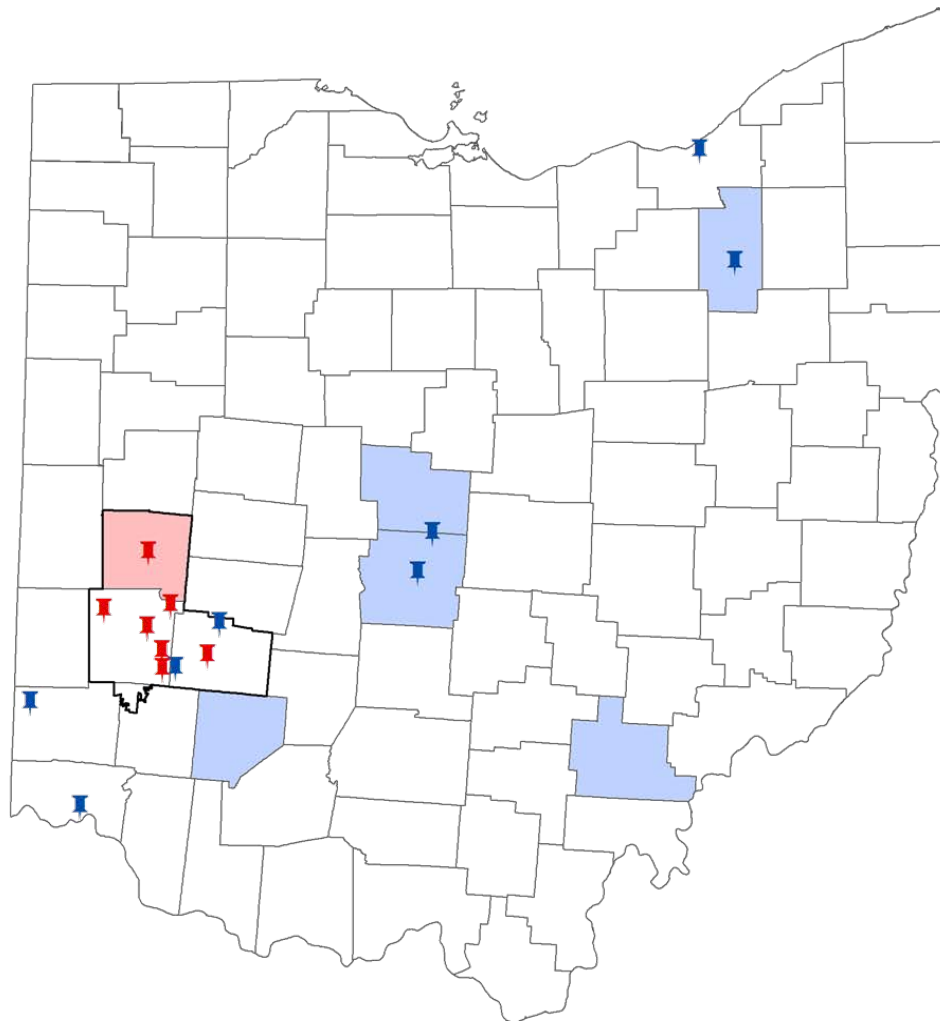
## AARP Livable Communities Domains



# Coalition of Age-Friendly Communities Ohio

## Miami Valley

- Miami County
- Harrison Twp
- Washington Twp
- Brookville
- Centerville
- Huber Heights
- Kettering
- Troy
- Xenia



## Rest of State

- Athens County
- Clinton County
- Delaware County
- Franklin County
- Summit County
- Akron
- Bellbrook
- Cleveland
- Columbus
- Cincinnati
- Oxford
- Westerville
- Yellow Springs

Miami Valley: First Age-Friendly Region in Ohio!





# MIAMI VALLEY

Regional Planning Commission

---

Shaping Our Region's Future Together

937.223.6323

<https://www.mvrpc.org>

