



GRM Coordination Council Meeting



Agenda



1

Welcome

2

GRMI Plan Approval

3

Gohio Commute/Specialized Mobility Tool

4

Regional Project Update

5

GRMI Council Structure

6

ODOT Updates



Poll

- Are you currently providing transportation to clients during the pandemic?
 - Yes
 - No
- If no, do you plan to begin transportation within the next six months?
 - Yes
 - No
 - Unsure
- Do you plan to provide transportation to vaccine locations outside of your agencies normal operations?
 - Yes
 - No
- *only agencies that provide transportation should respond to poll



GRMI Plan Revisions & Approval

- Public Comment period was held for Revisions to the Final Draft of the Greater Region Mobility Initiative Plan in August 2020
- GRMI Plan was adopted by rural Board of County Commissioners and MVRPC Board of Directors in September
 - Adoption allows rural transportation providers to remain eligible for Section 5310 funds through ODOT
 - Allows transportation providers to apply to ODOT for additional funding to meet regional level goals (i.e. OPT2 funding)
- Plan was approved by ODOT in December 2020
 - Approval will allow providers to utilize plan for funding in calendar year 2021 and beyond



MVRPC's RIDESHARE PROGRAM



MIAMI VALLEY
Regional Planning Commission



A partner of

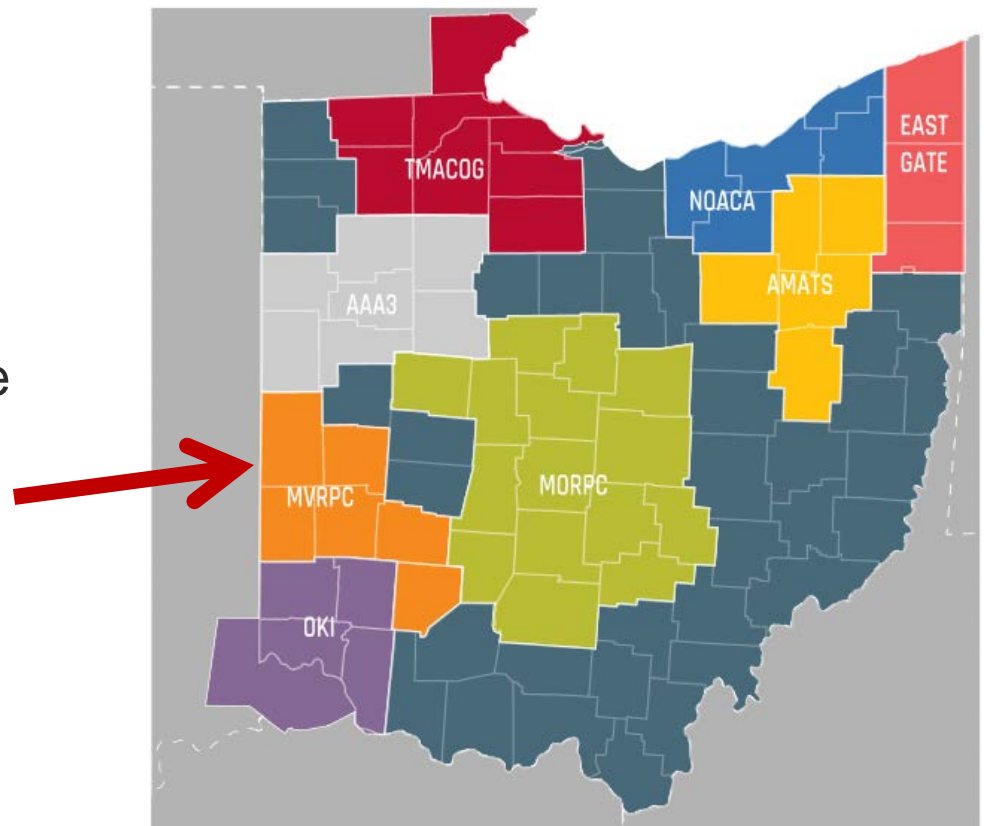
A Smarter Way

Presented by Laura Henry
2-2-2021



MVRPC's RIDESHARE PROGRAM

- Rideshare means sharing your commute with others by carpooling, vanpooling or bikepooling.
- MVRPC's RIDESHARE Program is FREE to anyone who lives, works or attends college in Montgomery, Greene, Miami, Preble, Darke and Clinton Counties.



Commute Solutions

Carpooling - Save money by sharing the ride to work or college



Vanpooling - If you have a long commute, over 25 miles each way, vanpooling is an option for you. A group of at least 4 people and up to 14 people rent a van on a monthly basis.



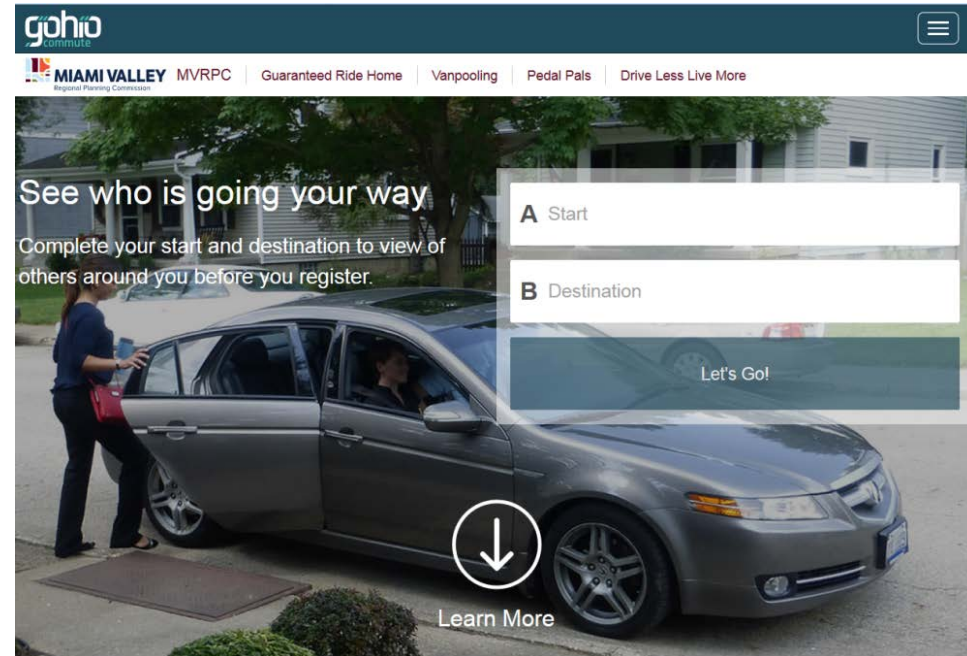
Bikepooling - Bike to work with others. Travel together for safety and get your exercise in as you commute



Transit – Public Transportation offered by Greater Dayton Regional Transit Authority, Greene CATS and Miami County Transit



- Information about the program and resources to help you get started.
- Click on the Register Here to access statewide platform GohioCommute.com.
 - Register and add your commute start and destination to view commute solutions options on your dashboard
 - Featured commute solutions – carpooling, biking, walking, transit, vanpooling
 - For those who do not have access to the internet, call 937.223.SAVE for a Rideshare representative.



User Dashboard

Commute trip

Impact

Commute Options

Badges

Trip Logs

The screenshot shows the Gohio Commute user dashboard. At the top, there's a navigation bar with links: HOME, EVENTS, DASHBOARD (active), PROGRAMS, and MANAGE. Below this is a header for MIAMI VALLEY Regional Planning Commission with links: MVRPC, Guaranteed Ride Home, Vanpooling, Pedal Pals, and Drive Less Live More. The main content area is divided into several sections:

- MY COMMUTES:** Contains a form to edit a commute. The current trip is from 8931 Motter Ln to 10 N Ludlow St. It includes fields for 'Leave By' (01/15/2021, 04:00 PM) and weather information (43°F).
- COMMUTE OPTIONS:** A sidebar on the right with 'Start' and 'Destination' fields, a 'VIEW MY COMMUTE OPTIONS' button, and a 'MANAGE MY PROFILE' button.
- MY CARPOOL:** Shows the user as the 'OWNER' of 0 members. A 'MANAGE' button is present.
- 20 CARPOOL OPTIONS:** A list of carpooling options.
- WALK:** Shows a distance of 11.1 mi and a time of 3 hr 51 min.
- 2 BIKE OPTIONS:** Shows a distance of 11.9 mi and a time of 1 hr 10 min.
- DRIVE:** Shows a distance of 12.1 mi and a time of 18 min.
- 8 BIKEPOOL OPTIONS:** A list of bikepooling options.
- MY MEMBERSHIPS:** A section with an 'ADD ANOTHER COMMUTE' button.
- LOG YOUR TRIPS:** A section with a calendar for January 2021 and a form to log a trip. It includes fields for 'Favorite Trip', 'DEPARTURE' (8:30 AM), 'RETURN' (5:30 PM), 'ONE WAY DISTANCE' (15.9 MI), and 'MODE OF TRAVEL' (Bike).
- ACHIEVEMENTS:** A section showing various achievement icons and a 'VIEW ACHIEVEMENTS' button.
- VIEW ALL MY CHALLENGES:** A button to view challenges.
- VIEW ALL MY STATS:** A button to view statistics.

Annotations with arrows point to specific features:

- 'Commute trip' points to the 'MY COMMUTES' section.
- 'Impact' points to the '\$1,203.83' savings figure.
- 'Commute Options' points to the '20 CARPOOL OPTIONS' section.
- 'Badges' points to the 'ACHIEVEMENTS' section.
- 'Trip Logs' points to the 'LOG YOUR TRIPS' section.



Commute Options - Carpool

The screenshot displays the Gohio Commute website interface. At the top, the navigation bar includes links for HOME, EVENTS, DASHBOARD, PROGRAMS, MANAGE, and user information (Hi Laura!). Below this, the Miami Valley Regional Planning Commission logo is visible, along with links for MVRPC, Guaranteed Ride Home, Vanpooling, Pedal Pals, and Drive Less Live More.

The main content area shows a route from Point A (8931 Motter Ln, Miamisburg, Ohio, 4) to Point B (10 N Ludlow St, Dayton, Ohio, 4540). The route is set for 04:00 PM on 01/15/2021. A sidebar on the left offers various commute options: CARPOOL (20), BIKE (2), WALK (1), and TRANSIT (0). The carpool section is expanded, showing details for a carpool with 20 members, including filters for schedule, trip type, and network.

The central panel displays carpool options for the selected route. It features a "MANAGE MY CARPOOL" button and a "SHOW ME" section with tabs for RIDERS and DRIVERS. A specific carpool is highlighted for "Chuck" (FROM BRAMS HILL RD, DAYTON), showing a route of 17.9 miles and 1 hour 10 minutes. The carpool has a flexible schedule from 04:00 AM to 01:00 PM. A "DETAILS" button and a "CONNECT" button are provided for this carpool. Below this, it notes that "You and Chuck are both members of: Miami Valley Region" and mentions the carpool was updated by user May 1, 2017.

The right side of the interface features a map showing the route from Dayton to Miamisburg. A legend in the top right corner indicates traffic conditions, EV charge stations, GO BUS, and a link to Dayton Bike Share. The map shows the route passing through Kettering, Centerville, and Miamisburg.



Commute Options – Bike Route

gohio commute

HOME EVENTS **DASHBOARD** PROGRAMS MANAGE Hi Laura! LANGUAGE

MIAMI VALLEY Regional Planning Commission

MVRPC Guaranteed Ride Home Vanpooling Pedal Pals Drive Less Live More

[Edit your Saved Commute](#)

A 8931 Motter Ln, Miamisburg, Ohio, 4

B 10 N Ludlow St, Dayton, Ohio, 4540

04:00 PM 01/15/2021

CARPOOL (20)

BIKE (2)
1 HR 10 MIN 11.9 MI
0 LBS CO2

WALK (1)
3 HR 51 MIN 11.1 MI
0 LBS CO2

TRANSIT (0)

DRIVE (1)
18 MIN 12.1 MI
10 LBS CO2 \$6.85

VANPOOL (0)

SHOW ME
ROUTES BIKEPOOLS

RESULT 1 - VIA SPRINGBORO PIKE
1 hr 7 min 11.4 mi
A Depart at: 4:00 PM
8931 Motter Ln, Miamisburg, Ohio, 45342
B Arrive at: 5:06 PM
10 N Ludlow St, Dayton, Ohio, 45402

RESULT 2 - VIA MAD RIVER ROAD
1 hr 10 min 11.9 mi
A Depart at: 4:00 PM
8931 Motter Ln, Miamisburg, Ohio, 45342
B Arrive at: 5:10 PM
10 N Ludlow St, Dayton, Ohio, 45402

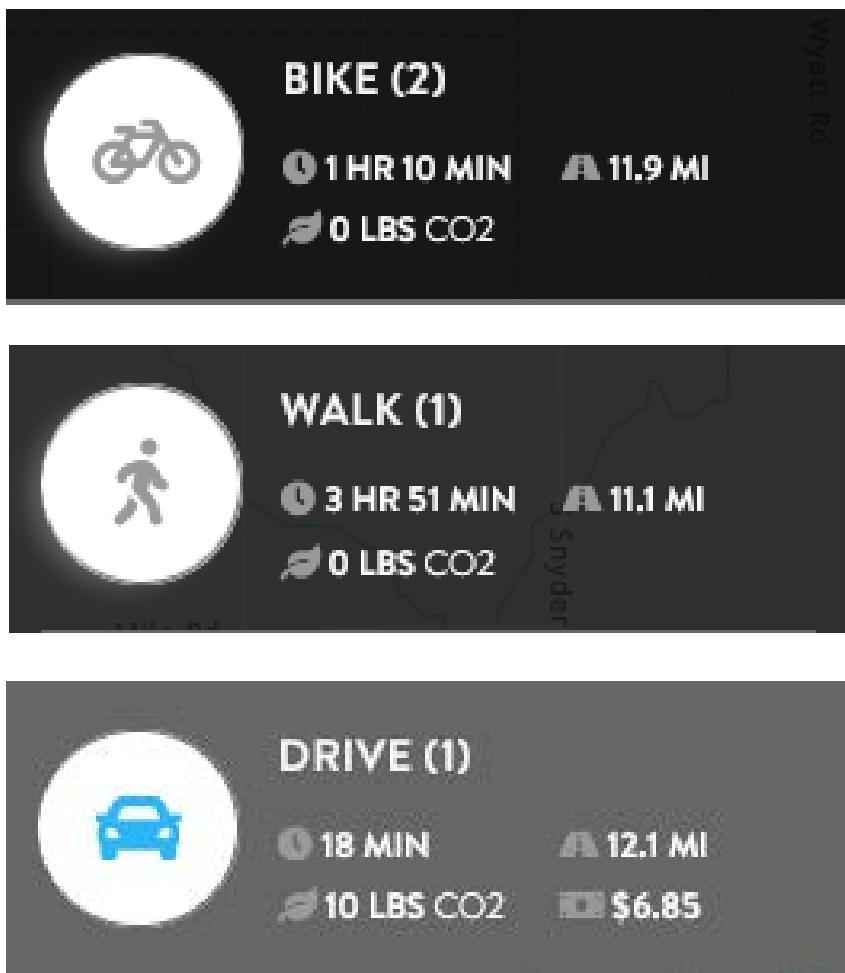
LEGEND:
TRAFFIC CONDITIONS
EV CHARGE STATIONS
GO BUS
LINK DAYTON BIKE SHARE

City of Kettering, Esri, HERE, Garmin, SafeGraph, METI/NASA, USGS, EPA, NPS, USDA

Powered by Esri



Commute Impact



Guaranteed Ride Home

- If you register for RIDESHARE, you are automatically eligible for the Guaranteed Ride Home (GRH) Program.
- GRH provides a guaranteed ride via taxi in case of an emergency, such as you or family member becomes ill, you unexpectedly must work past your normal quitting time, or your rideshare driver has to leave earlier than normal.
- GRH reimburses registered participants 80% of a taxicab ride up to 4 times in a 12-month period.



Commute Safely – Back to Work after COVID



Resources for information and guidelines for a safer commute linked at MiamiValleyRideshare.org.

Guidelines for transportation from the **Center for Disease Control**

- Protect yourself when using transportation, public transit, rideshares and taxis, micro-mobility devices, and personal vehicles

Recommendations from the **Association for Commuter Transportation**

- Supporting commuters returning to worksites during COVID-19





MIAMI VALLEY

Regional Planning Commission

Laura Henry

Manager of Programs & Public Outreach
937.531.6542 | Lhenry@mvrpc.org



@MiamiValleyRPC



@MVRPC

GRMI Plan
Approval

Gohio
Commute

Regional
Project

Council
Structure

ODOT
Updates



SPECIALIZED MOBILITY SEARCH TOOL

Lexi Petrella

Mobility Coordinator, MORPC



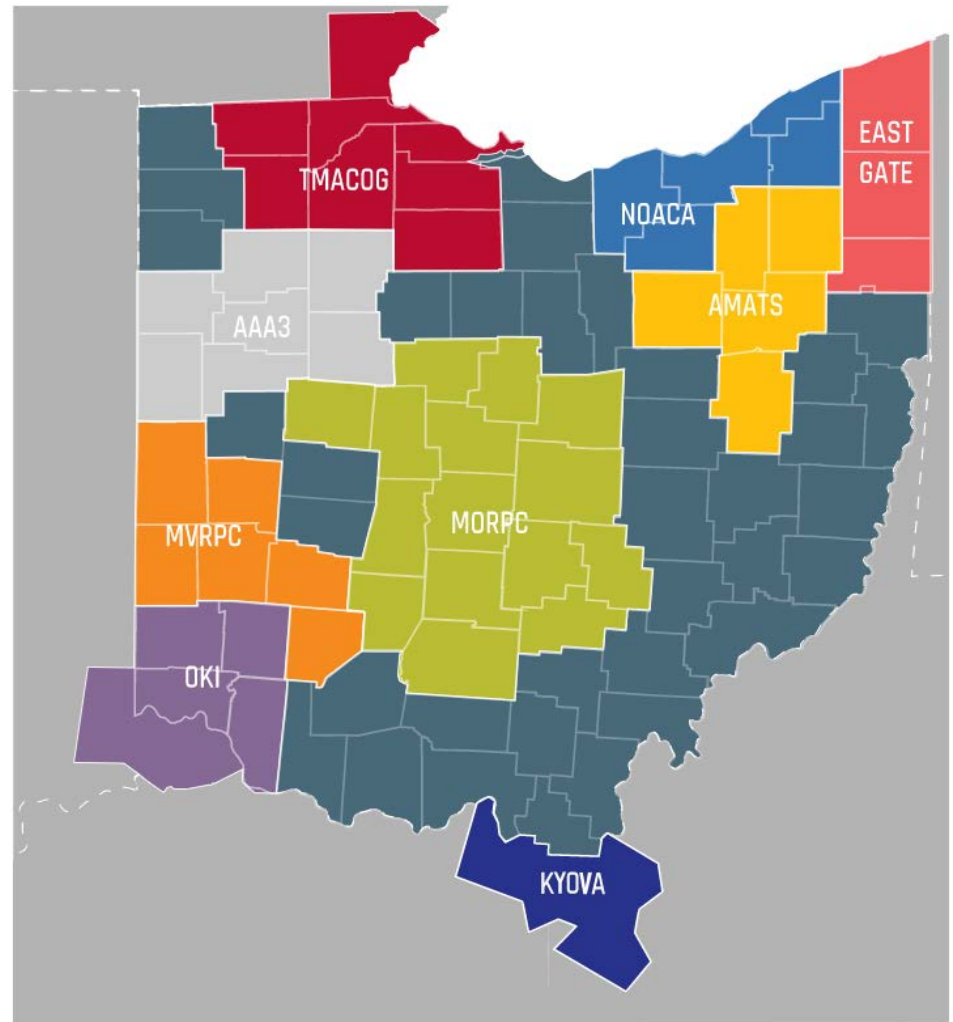
MID-OHIO REGIONAL
MORPC
PLANNING COMMISSION

SPECIALIZED MOBILITY SEARCH TOOL



MORPC

- Extension of the Gohio Commute Platform
- Development partners:
 - Ohio Association of Regional Councils (OARC)
 - ODOT Office of Transit
- Online search tool
- Connecting transit providers to individuals and social service organizations



GRMI Plan
Approval

Gohio
Commute

Regional
Project

Council
Structure

ODOT
Updates

TOOL DEMONSTRATION

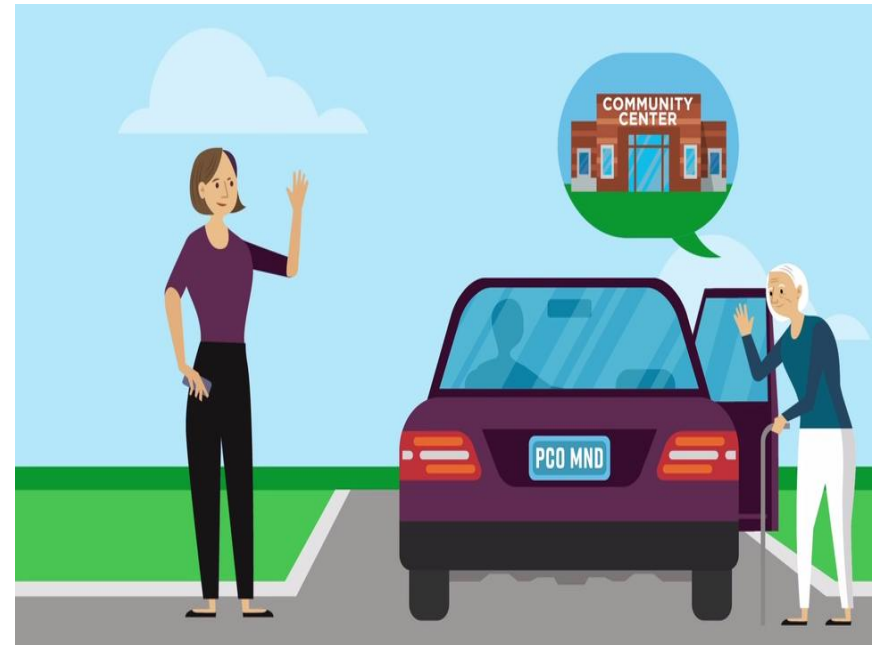


- User facing:

<https://gohiocommute.com/#/specialized-providers>

- Administrator facing:

<https://gohiocommute.com/#/tools/specialized-providers>



GRMI Plan
Approval

Gohio
Commute

Regional
Project

Council
Structure

ODOT
Updates

LEXI PETRELLA

Mobility Coordinator

**Mid-Ohio Regional Planning
Commission**

T: 614.233.4132 | **M:**

380.325.1275

apetrella@morpc.org

111 Liberty Street, Suite 100
Columbus, OH 43215



MID-OHIO REGIONAL
MORPC
PLANNING COMMISSION

**GRMI Plan
Approval**

**Gohio
Commute**

**Regional
Project**

**Council
Structure**

**ODOT
Updates**

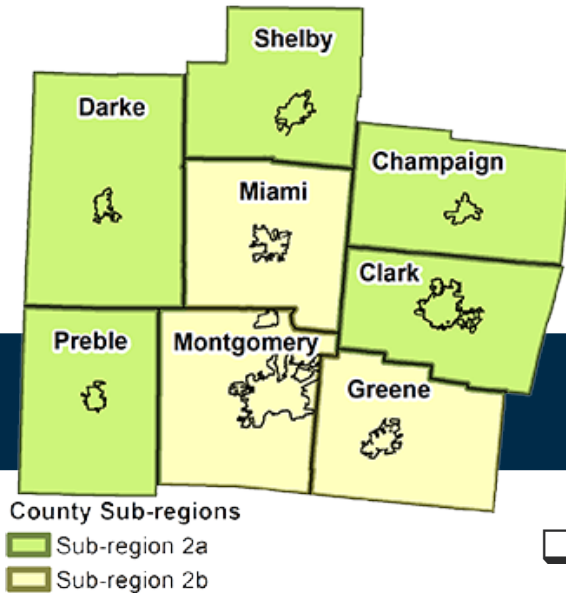
Regional Project Update

ODOT made available \$100,000 to Region 2 for regional level projects

- ❑ Project addresses regional plan Goal 1: Enhance Coordination
- ❑ Funds available to all counties within Region 2
 - The project will review all transit available in region and compare to public needs with intent to establish centralized scheduling hub

Project Development/Selection

- ❑ Clark County TCC was identified as Lead Agency
 - Agency will hold contract directly with ODOT
 - Will be responsible to define scope of project and advertise RFP
- ❑ Project will be completed no later than June 30, 2022

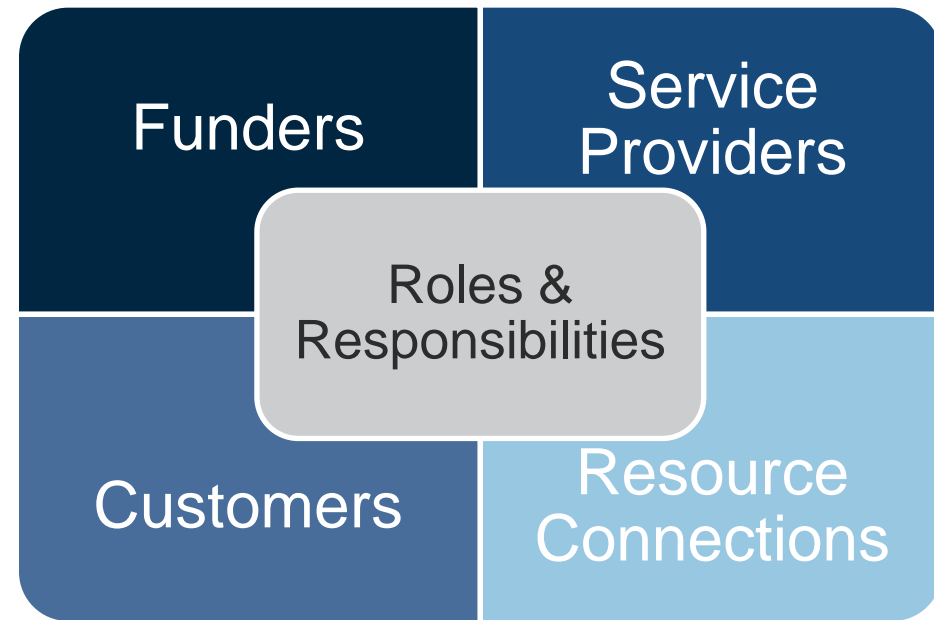


Why Should the Council have Structure?

- Collaboration began as part of the coordinated council process and continues to grow
 - Outcome: strengthening collaboration through collective relationships which foster creative solutions for mobility issues
 - Outcome: Provides opportunity for ownership of resources dispersed within region



Considerations of who is Included?



Example of Council Structure



Project Steering and/or Advisory Committee:

- Reviews goals and provides community feedback
- Identifies work priorities/project selection
- Potentially generates by-laws, term limits, principals etc. to ensure fair member representation with a diverse set of ideas and experiences



Potential Key Priority Sub-Committees:

- Smaller committees who work towards specific key priorities



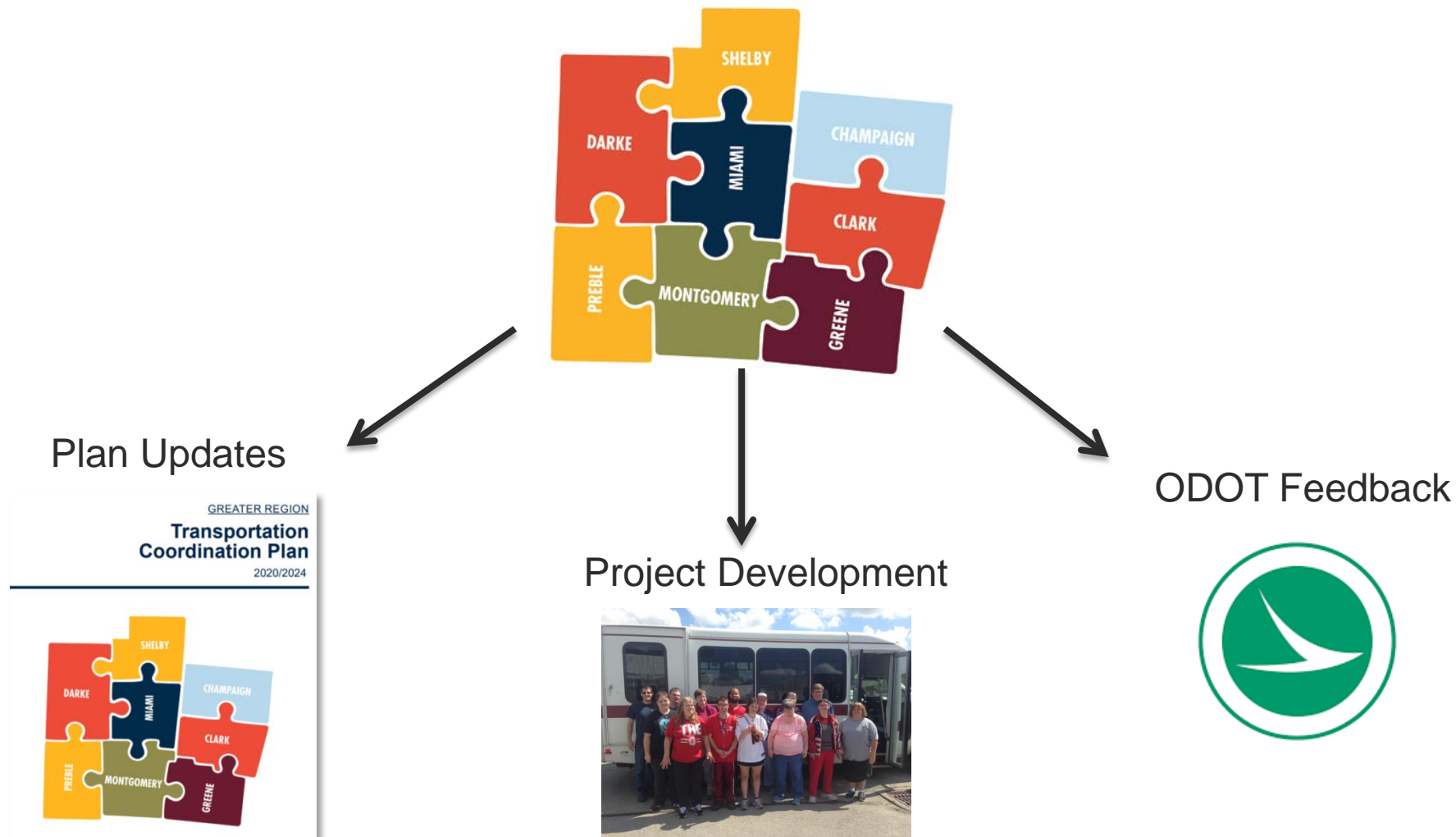
Potential Work Groups:

- Smaller working groups could formulate from sub-committees who work together towards specific tasks (example regional project working group)

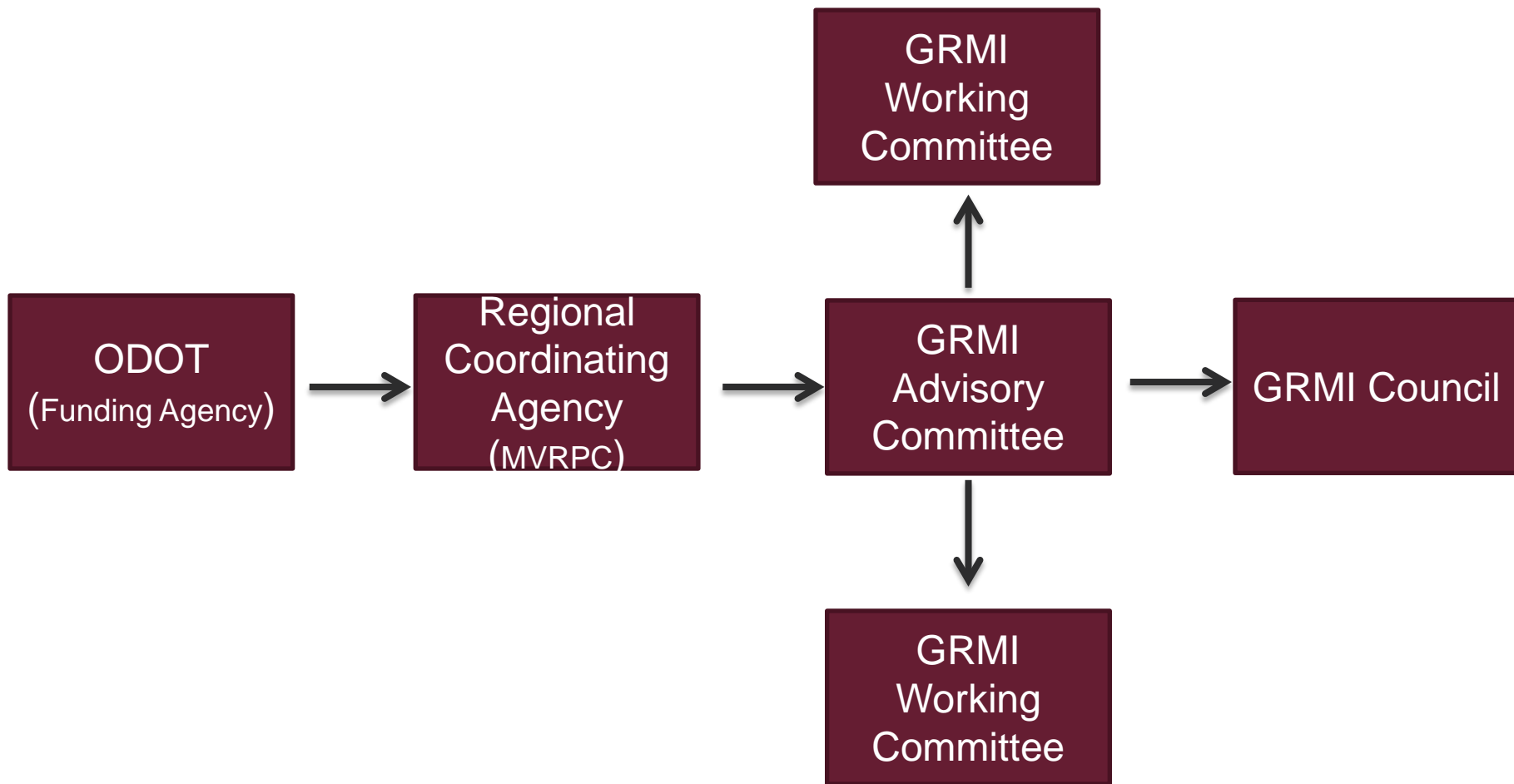


How GRMI Council Structure can Assist

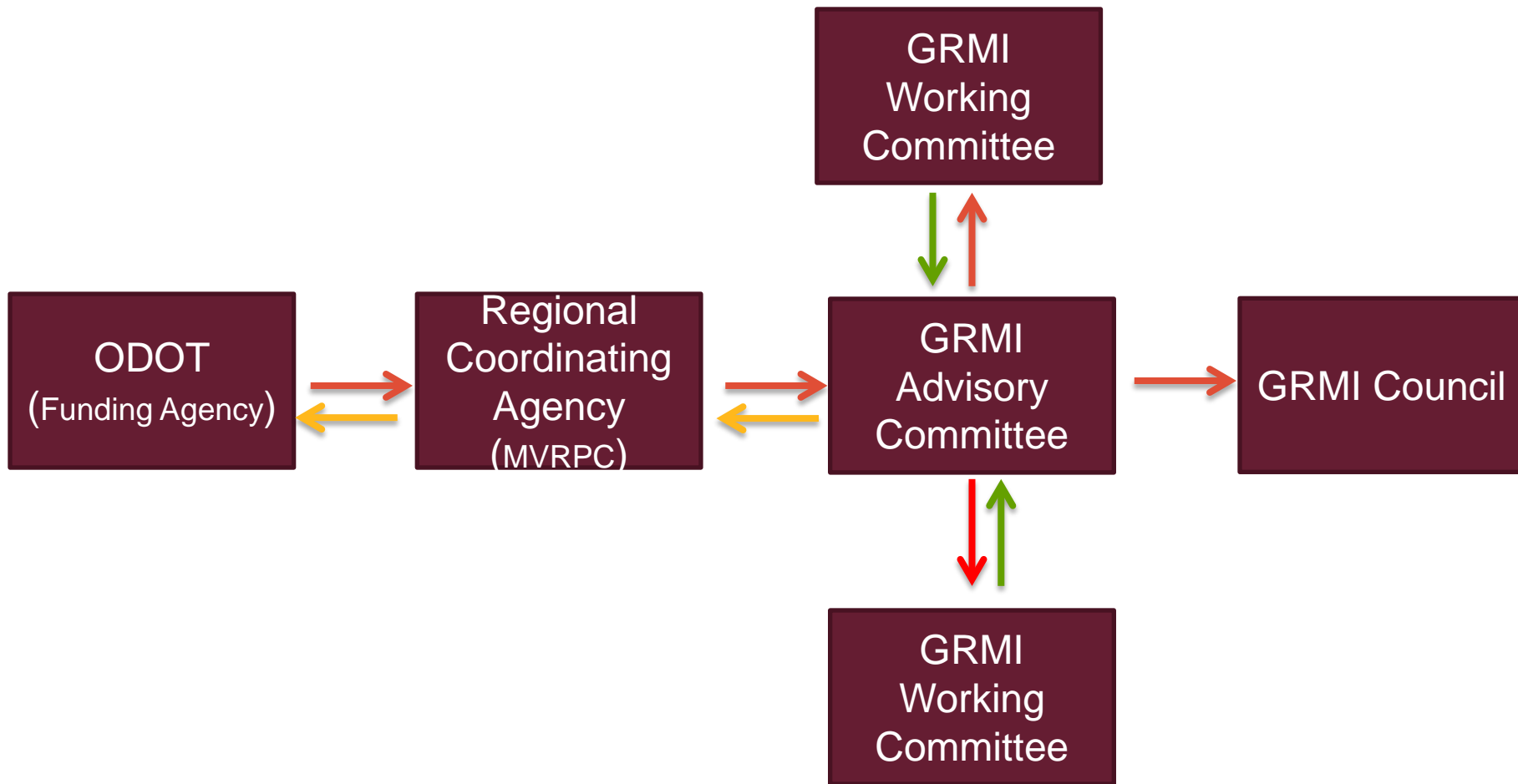
GRMI Council Structure



Recommended Council Model - Relationships



Recommended Council Model – Information Flow



Implementing Council Structure



- A representative from each county will be appointed to the GRMI Advisory Committee for a two year term
 - The appointments can be done through a process with the county coordination councils
 - The appointed advisory committee members should be active within the local coordinated council they represent
 - The RCA will help the local councils facilitate this process
 - The committee will also include Mobility Managers in the Greater Region



Implementing Council Structure



- The Advisory Committee will establish a set of guidelines establishing its operation
 - This will be approved by the GRMI Council
- Working Committees can be established after the Advisory Committee with the assistance of the RCA as needed



Implementing Council Structure—Timeline



Advisory
Committee
established
in spring

Approval of
committee in
May by
GRMI
Council

Develop
committee
guidelines

GRMI
Council
approval of
guidelines in
August



Poll

- Do you understand the relationships and informational flow of recommended model?
 - Yes
 - No
- Should this be the model the GRMI Council uses to provide itself structure?
 - Yes
 - No
- Open discussion of recommended model



ODOT Updates



Questions

