



TOOL K
MIAMI VALLEY
STORY
PROJECT

TOOL A
REGIONAL
GEOGRAPHIC
INFORMATION SYSTEM

TOOL J
NATURAL RESOURCES
PRESERVATION AND
ENHANCEMENT

TOOL B
ECONOMIC
DEVELOPMENT
DATABASE DATA
SUPPORT

TOOL I
SUSTAINABLE
DEVELOPMENT AND
REDEVELOPMENT

TOOL C
RETURN ON
INVESTMENT / IMPACT
ANALYSIS TOOL

TOOL H
REGIONAL
COLLABORATION
TRAINING PROGRAM

TOOL D
REGIONAL ASSETS
AND ECONOMIC
ANALYSES

TOOL G
LOCAL JURISDICTION
COORDINATION ON
SPECIFIC ISSUES

TOOL E
PROJECT FUNDING
COMPETITIVENESS
ANALYSIS

TOOL F
REGIONAL
TRANSPORTATION
AND DEVELOPMENT
FORUM



MIAMI VALLEY
Regional Planning Commission

GOING PLACES IMPLEMENTATION TOOLS

PROGRESS UPDATES



MIAMI VALLEY

Regional Planning Commission

GOING PLACES IMPLEMENTATION TOOLS

PROGRESS UPDATES

MISSION

MVRPC promotes collaboration among communities, stakeholders, and residents to advance regional priorities. MVRPC is a forum and resource where the Board of Directors identifies priorities and develops public policy and collaborative strategies to improve quality of life throughout the Miami Valley Region.



ELEVEN IMPLEMENTATION TOOLS

PRIORITY #1

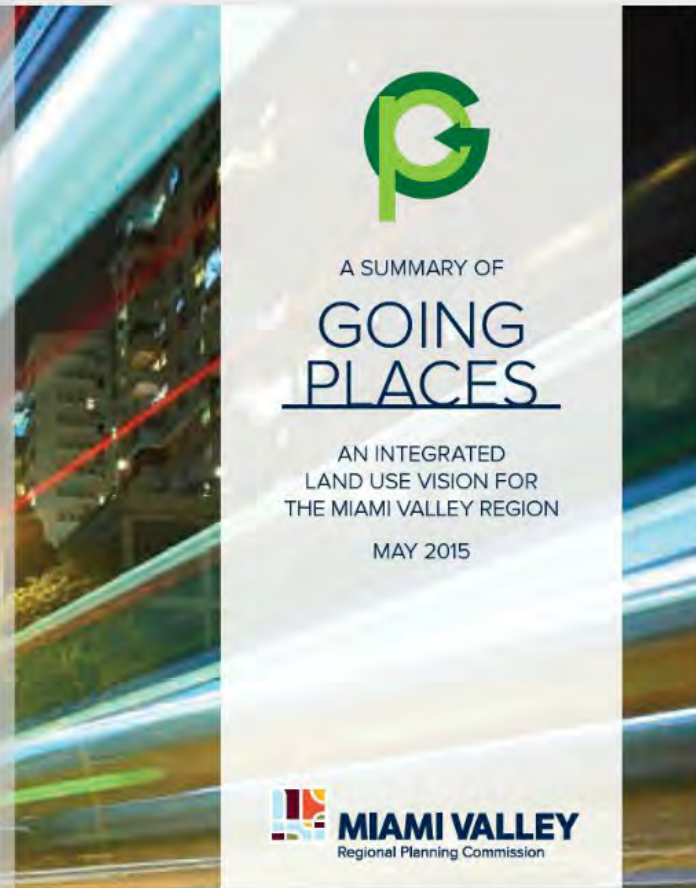
**Better Information for
Stronger Decision Making**

PRIORITY #2

**Strengthen Regional
Collaboration**

PRIORITY #3

**Build the Region's Capacity
for Solution**



RESOURCES

MIAMI VALLEY DATA COMMONS

HOME // DATA & MAPPING // DATA COMMONS

Web TELUS

Traffic Count Viewer

Project Evaluation System

Geo-Spark

Recreational Assets Map

Economic Base Assessment

Geographic Information Systems (GIS) at MVRPC ↓

Census Data Center ↓

Data Commons ↑

Darke

Greene

Miami

Montgomery

Preble

Warren

MIAMI VALLEY DATA COMMONS

The Miami Valley Data Commons provides data on a number of different topics at the county level for Darke, Greene, Miami, Montgomery, Preble, and Warren counties. The topics correspond with those found in the [Regional Profile](#):

- Key Demographics
- Arts and Culutre
- Business and Industry
- Diversity
- Environmental Quality
- Housing
- Recreational Open Space
- Transportation
- Vacancy
- Workforce

Additional information, such as the Census Data Regional Profile and Longitudinal Employer-Household Dynamics, can be found on the [Census Resource Page](#). For an Excel file containing all raw data for each county and to navigate to each county page, please use the following navigation tool.

County	Interactive Dashboard	Raw Data Excel File
Darke	Launch	Download
Greene	Launch	Download
Miami	Launch	Download
Montgomery	Launch	Download
Preble	Launch	Download
Warren	Laurich	Download

< Key Demographics

Arts and Culture

Business and Industry

Diversity

Environment & Planning >



Key Demographics

Montgomery County

Total Population

Source: 1980 - 2010 Decennial U.S. Censuses

	Population
1980	571,697
1990	573,809
2000	559,062
2010	535,153

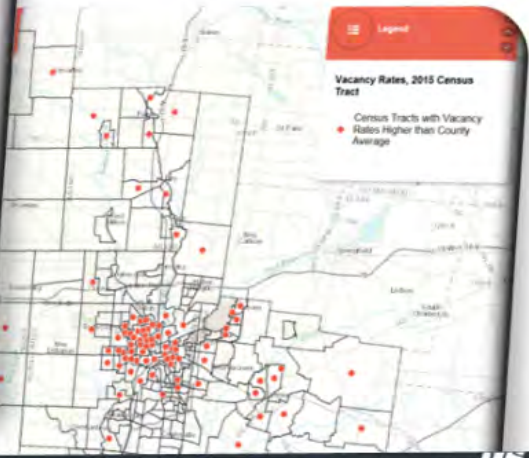
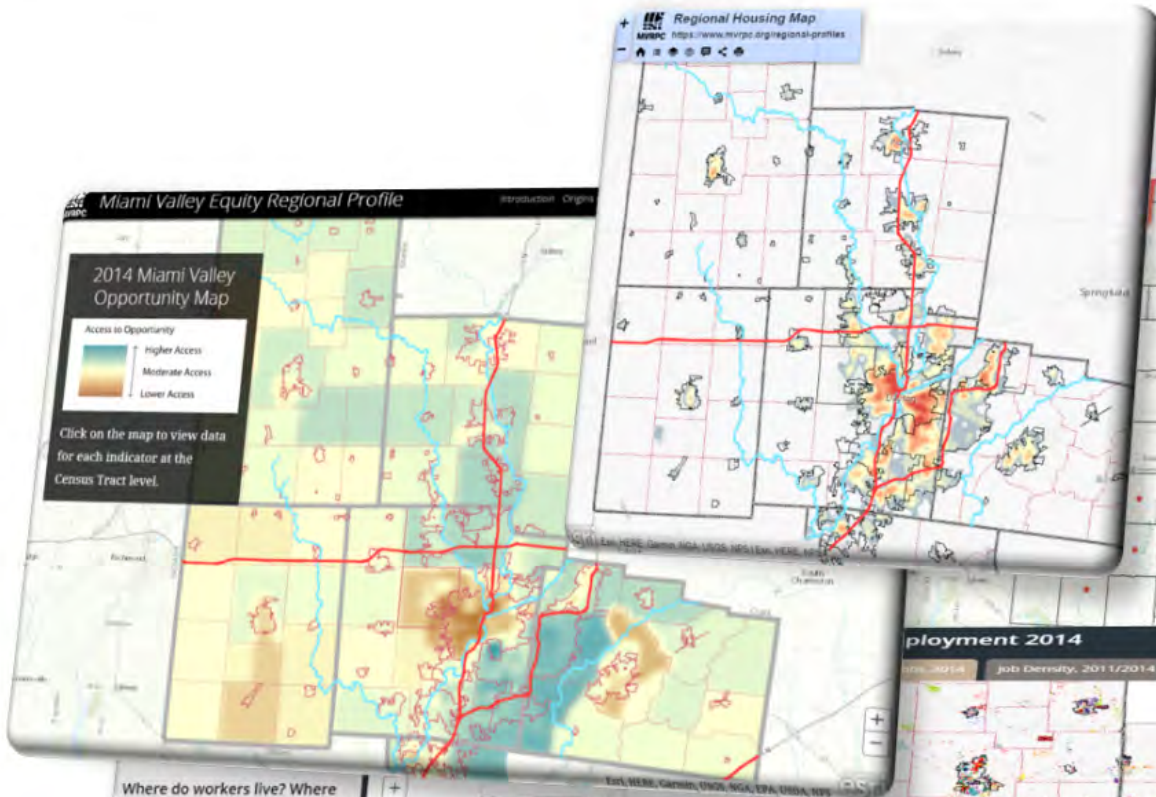
Jobs and Earnings by Year



Use the filters below to view information based on year and industry.

Year
2004 ▾

Highlight Industry
Highlight Industry ⌵



Where do workers live? Where do they work?

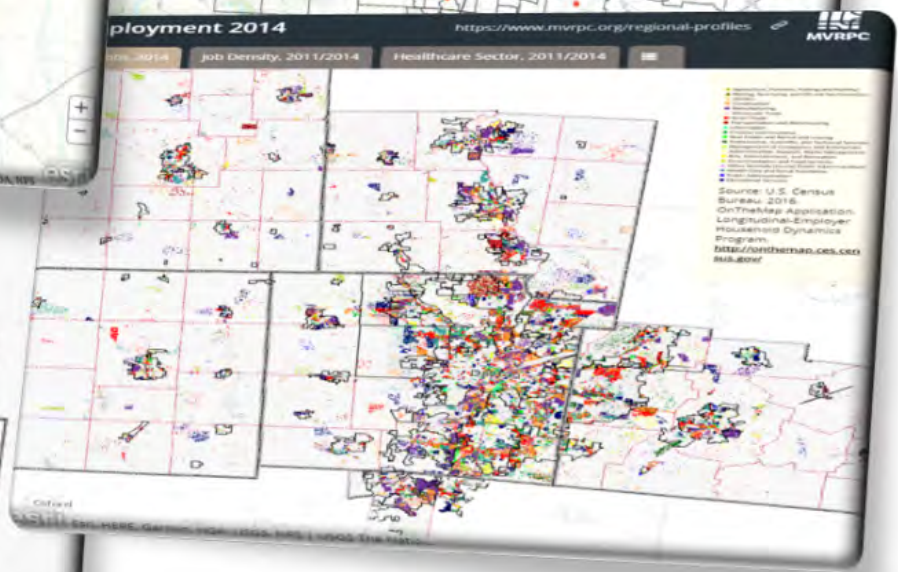
These maps compare workers' workplace and home. Drag the slider to discover where workers live (right) and where they work (left).

Source: U.S. Census Bureau. (2017). LEHD Origin-Destination Employment Statistics (2015) [computer file]. Washington, DC: U.S. Census Bureau, Longitudinal-Employer Household Dynamics Program. <https://onthejob.ces.census.gov/>

Where do workers travel on their journey to and from work?

Where do different age groups live? Where do they work?

Where do men and woman





Welcome to the Miami Valley Geo-Spark, the place to find geographic data for the Miami Valley Region.

The "Geo-Spark" is the Miami Valley's central location for open data and interactive maps. Through this site, you can visualize regional data in map galleries or access GIS Open Data layers & maps.

Explore our Open Data



Browse GIS open data and maps for the Miami Valley.

Click a button below to view specific data types and web maps, or click the button to the left to access all of the data. You can use these same categories when searching for maps in the galleries below.

ArcGIS Online user? Check out our [Regional Resources](#) group for additional opportunities to share information.





MVRPC's Mapping Application Gallery

Land Fabric, Census, €



Web Mapping Application

2010 Census Data



Web Mapping Application

Dayton 1958 to Now



Web Mapping Application

Employment - 2013
LEHD



Web Mapping Application

Employment
Concentration: by
Age, 2011 data



Web Mapping Application

Employment
Concentration: by
Education, 2011 data



Web Mapping Application

Employment
Concentration: by
Income, 2011 data



Web Mapping Application

Employment
Concentration: by
Sector, 2011 data



Web Mapping Application

Employment, 2014



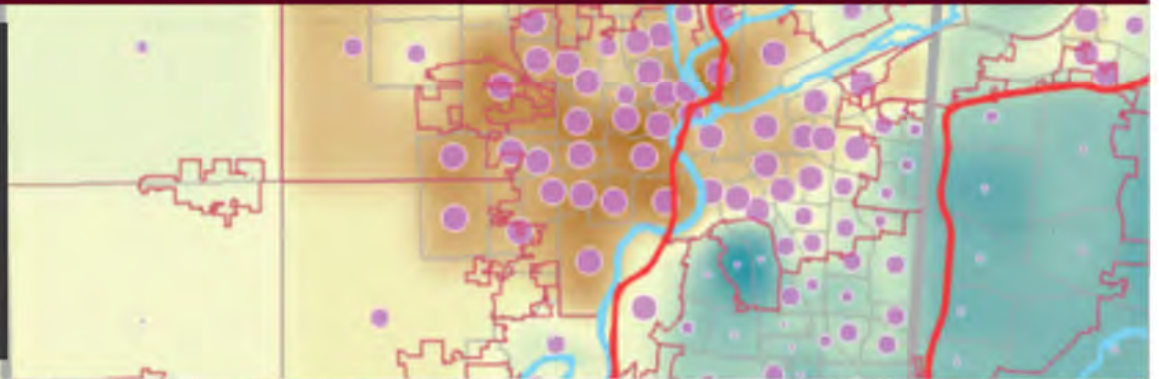
Initiatives

Explore recent agency projects and the data involved behind them.

Regional Profiles

MVRPC's Regional Profiles series provide insight on where the Miami Valley Region stands by providing data, information, and maps on a variety of subjects

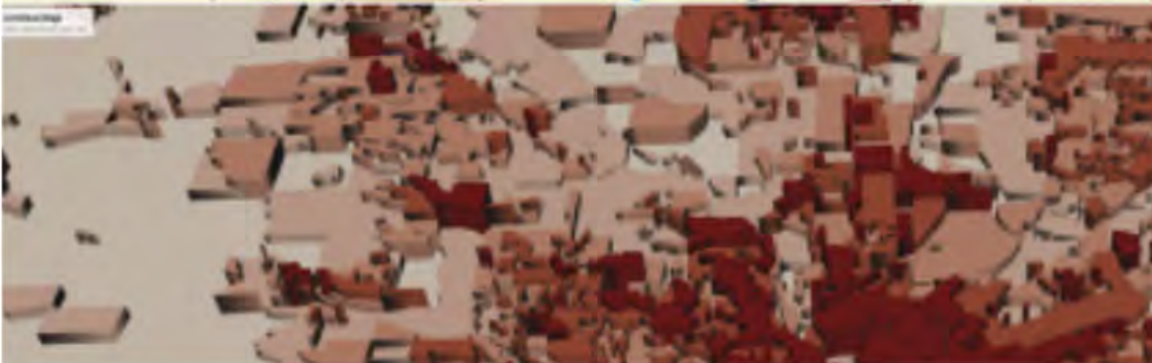
Learn more about the Regional Profile series [here](#).



GIS at MVRPC

At MVRPC, GIS is one of the key components of its Planning Support System that provides a vital operating function in conducting regional planning activities.

Learn more about GIS at MVRPC [here](#).





MIAMI VALLEY
Regional Planning Commission

- ↓ TRANSPORTATION
- ↓ REGIONAL PLANNING
- ↓ ENVIRONMENT
- ↓ DATA & MAPPING
- ↓ OUR VISION
- ↓ OUR MEMBERS

PLANNING TOOLS

HOME // REGIONAL PLANNING // REGIONAL PLANNING SERVICES // PLANNING TOOLS

Regional Planning Services ↑

Jeff Twp LU Strategic Planning

Open Space Planning

Regional GIS

Planning Tools ↑

Plan Development & Resources

Plan by Subject

Plan Implementation

Equity Initiative

Regional Profiles

Going Places Initiative ↓

Welcome to MVRPC's Planning Tools page. This page provides planning practitioners with a range of tools, resources, and best practices to enhance planning outcomes across the Miami Valley.

The planning tools are categorized into three themes: Plan Development & Resources, Plan by Subject, and Plan Implementation. A variety of resources can be found under each topic. We will continue to update this site with additional resources as needed.

Plan Development & Resources:

Project Scoping | Public Engagement | Scenario Planning | GIS

Plan by Subject:

Comprehensive | Land Use | Housing | Community Development | Site

Plan Implementation:

Zoning | Return on Investment

For additional information, please contact Martin Kim, Director of Community & Regional Planning at mkim@mvrpc.org.

Note: This site contains links to external websites that are not provided or maintained by or affiliated with MVRPC. MVRPC does not guarantee the accuracy, relevance, timeliness, or completeness of any information on these external websites. A range of subject matter is covered under the planning tools resources. As such, MVRPC may not have individual expertise on each topic. The links provided on this page are for informational and educational purposes only.



PLANNING TOOLS – PLAN DEVELOPMENT & RESOURCES

Inform your planning activities with the tools, resources, and best practices showcased here. These include topics from getting started with a new planning effort, to understanding real-world conditions, to working with the public.

For information on tools related to [specific types of plans](#) or [plan implementation](#) visit our other planning tool pages.

Project Scoping

Public Engagement

Scenario Planning

Scenario planning is a process that allows planners to prepare for an uncertain future by exploring a range of conditions and possible outcomes. Scenario Planning is intended to enhance traditional planning practices by considering how a range of forces may influence the future.

The American Planning Association has a comprehensive [Scenario Planning Knowledgebase](#) that provides a range of resources for those looking to incorporate scenario planning into their planning activities.

[Consortium for Scenario Planning](#) is an association that seeks to improve the practice of scenario planning and broaden its use in communities of all sizes across disciplines.

Scenario planning can play an important role in the development of transportation plans. The Federal Highway Administration (FHWA) has a number of resources related to scenario planning: [FHWA Scenario Planning | Scenario Planning Guidebook](#)

[Opening Access to Scenario Planning Tools](#) report examines the current state of scenario planning and scenario planning tools that can help communities prepare for the future.

[Envision Tomorrow](#) is an open-access scenario planning package that provides insights on how various policies, development decisions, and growth patterns could impact a community.

Geographic Information Systems (GIS)

PLANNING TOOLS – PLAN IMPLEMENTATION

The tools, resources, and best practices featured here provide different approaches and methods for successful plan implementation.

For information on tools related to [plan development](#) or [specific types of plans](#), visit our other planning tool pages.

- Zoning

Zoning is a tool used by local governments to determine which types of land uses are permitted or prohibited. Zoning may regulate how the land can be used, how buildings can be situated on the land, and how buildings relate to their surroundings.

[Land use zoning](#) in the United States refers to complex municipal laws about what can be placed where in cities and towns. This website explores a range of topics related to common land use regulation mechanisms.

[Illustrating the Zoning Ordinance](#) identifies common terms, clarifies zoning concepts with illustrations and provides examples to simplify the written zoning ordinance.

The [Form-Based Codes Institute \(FBCI\)](#) is a professional organization dedicated to advancing the understanding and use of form-based codes.

As a form-based code, the [SmartCode](#) is a model transect-based planning and zoning document based on environmental analysis that addresses all scales of planning, from the region to the community to the block and building.

[Essential Smart Growth Fixes for Urban and Suburban Zoning Codes](#) aims to help communities looking for smaller fixes within existing codes and ordinances that will help them become more sustainable.

In recent years Cincinnati has moved away from traditional zoning to a form-based code. This [report](#) is a resource that defines form based codes, provides case studies, and lists ways to integrate within the city's code.

[MVRPC's Zoning Mapping Application](#) features a standardized and generalized regional zoning depicting land use type for Montgomery, Miami, Greene, Warren, Clark, Darke, and Preble Counties and was last updated in 2015.



We need your feedback!

Help the Miami Valley Regional Planning Commission better understand your planning resource needs by completing a brief survey about our new Planning Tools website by [date].

www.mvrpc.org/planningtools





TOOL K
MIAMI VALLEY
STORY
PROJECT

TOOL A
REGIONAL
GEOGRAPHIC
INFORMATION SYSTEM

TOOL J
NATURAL RESOURCES
PRESERVATION AND
ENHANCEMENT

TOOL B
ECONOMIC
DEVELOPMENT
DATABASE DATA
SUPPORT

TOOL I
SUSTAINABLE
DEVELOPMENT AND
REDEVELOPMENT

TOOL C
RETURN ON
INVESTMENT / IMPACT
ANALYSIS TOOL

TOOL H
REGIONAL
COLLABORATION
TRAINING PROGRAM

TOOL D
REGIONAL ASSETS
AND ECONOMIC
ANALYSES

TOOL G
LOCAL JURISDICTION
COORDINATION ON
SPECIFIC ISSUES

TOOL E
PROJECT FUNDING
COMPETITIVENESS
ANALYSIS

TOOL F
REGIONAL
TRANSPORTATION
AND DEVELOPMENT
FORUM



MIAMI VALLEY
Regional Planning Commission

GOING PLACES IMPLEMENTATION TOOLS

PROGRESS UPDATES