



**MIAMI VALLEY**

Regional Planning Commission

## LONG TERM DISASTER RECOVERY LEADERSHIP BOARD UPDATE

DECEMBER 4, 2020





# **LONG TERM DISASTER RECOVERY FISCAL REPORT**

# FINANCE

- Nearly \$2.8 million donated
- 3,805 gifts
- More than \$1.4 million granted out
- \$1.5 million remains

## Resource Table

(May-August 2020)

- Have assigned volunteer labor and allocated nearly \$250,000 in materials and money to tornado repair jobs





## **LONG TERM COMMUNITY DISASTER RECOVERY UPDATES**



# FEDERAL INVESTMENT SUMMARY

---

## \$14 M+ in FEMA Public Assistance

- Project costs and reimbursements to public agencies for disaster recovery efforts

## \$12.5 M in HUD CDBG-DR Program Funds

- Funds to be used to support affordable housing

## \$8.2 M in EDA Economic Recovery Projects

- \$3.6M for City of Dayton Water Treatment Facilities
- \$3.7M for Greene County Sewer System Upgrades
- \$720K for MVRPC Disaster Recovery Regional Coordination
- \$160K for MVRPC/DDC Comprehensive Economic Development Strategy Update



## FEDERAL INVESTMENT SUMMARY

---

### \$2.8M in EDA Economic Recovery Projects pending award

- \$1.1M for Miami Conservancy District Old North Dayton Levee Upgrades
- \$1.4M for Central State Workforce Innovation Hub
- \$320K for MVRPC Disaster Recovery Planning Assistance

**Total of \$34.7M in Federal Investment to Date  
(\$37.5M with pending awards)**



# RETREET PROGRAM

---





# RETREET PROGRAM

---



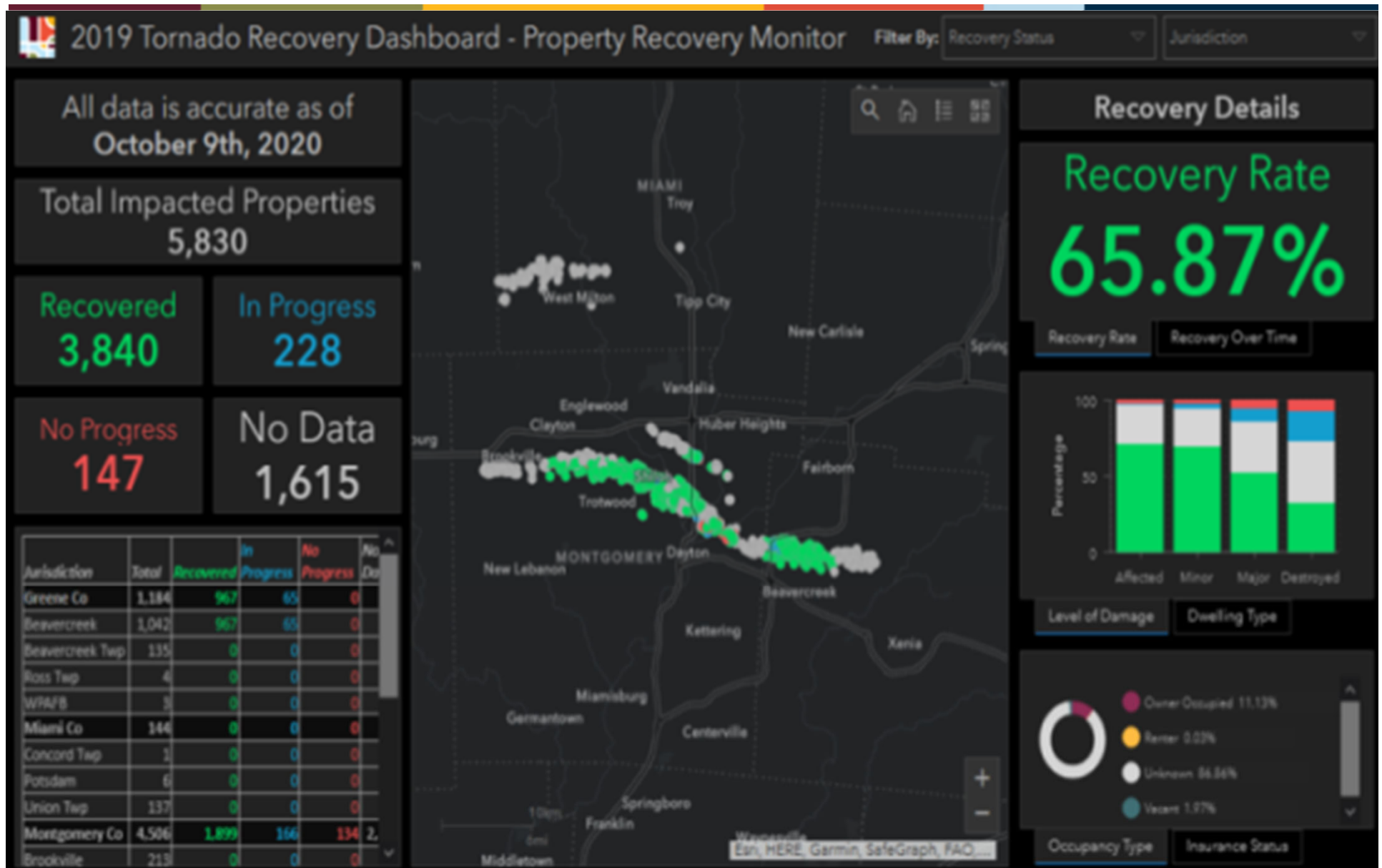


# RETREET PROGRAM





# DISASTER RECOVERY DASHBOARDS



# RENTAL UNIT IMPACT





## LONG TERM RECOVERY OPERATIONS GROUP



# Miami Valley Long Term Recovery Operations



Miami Valley Disaster Recovery –  
MVLTRG Update

December 2020

# Disaster Case Management Updates

**2,089** total cases

- **1,820** closed
- **229** open

Of the open cases, **113** are homeowners who have requested assistance with home repair/ reconstruction

(source CAN 11/25/2020)





# Repair & Rebuild Updates

- **>150** disaster caused damage assessments/estimates completed
- Approximately **46** LTRG repair/rebuild jobs currently resourced
- **35** in process for estimating or resource table approval



# Extraordinary work is underway!







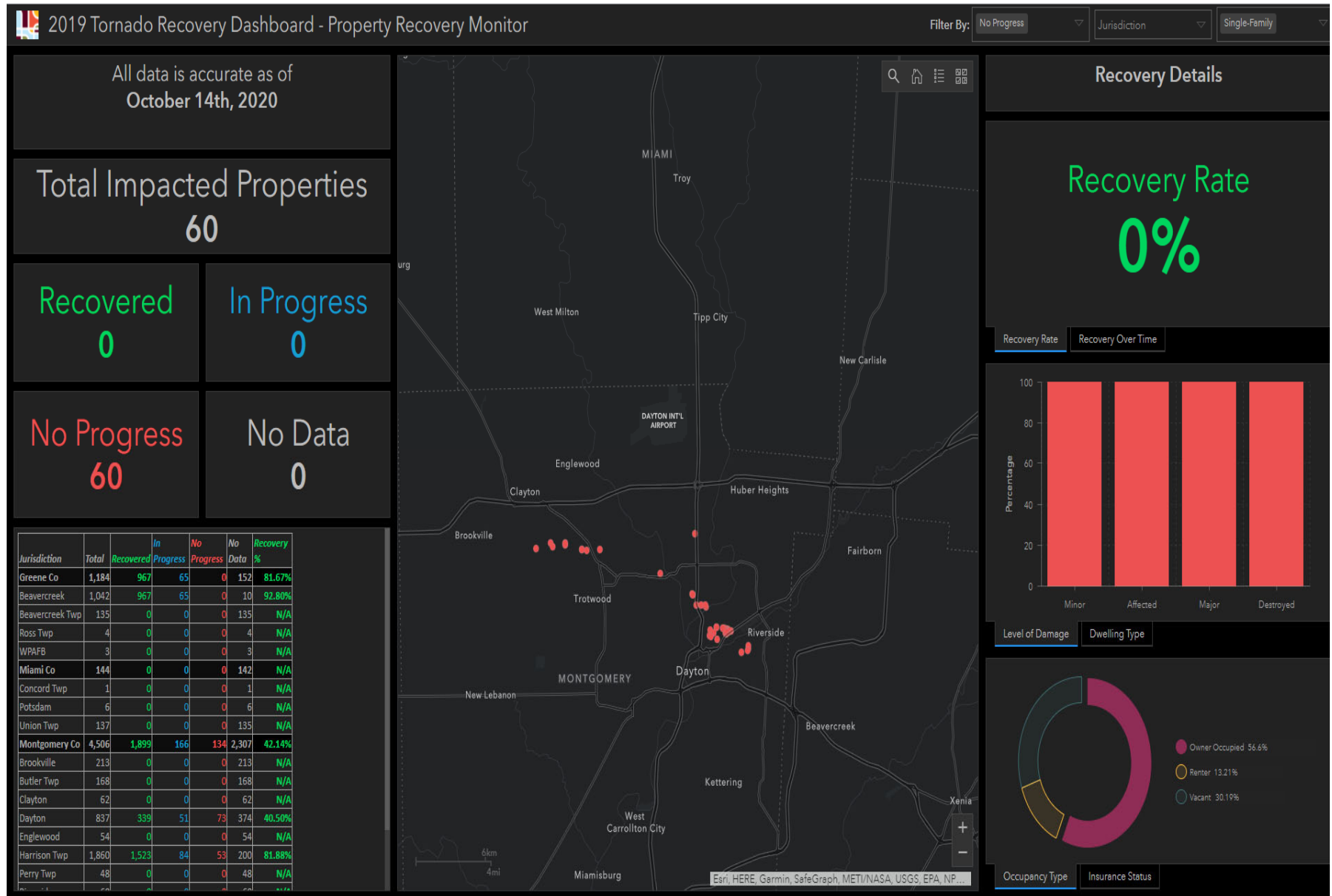








# Repair & Rebuild – Planned Outreach Effort





# Resource Table Allocations

- \$622,000 estimated cost of repairs
- \$446,000 estimated resource gap



## Resources allocated

- **Muscle** – Most leverage volunteers, several have contractors too
- **Money** - \$382,000 allocated
  - \$198,000 expected to be reimbursable via FHLB-DR Program
- **Materials** – continuing to leverage shingles, fixtures and appliances

# Legal Aid

- 400 calls
- 65 cases still open
- Major themes
  - Contractor
  - Insurance
  - Renter issues
  - Educational access
- Many issues exacerbated by COVID challenges





**LOOKING FORWARD TO 2021 & BEYOND**



# MVLTROG 2021 Transition Individual Recovery Wrap Up

October 2021 targeted for individual assistance case wrap up

- Anticipate that repair/rebuild work will be complete
- Will provide referrals to blue sky organizations for longer term need support where warranted (social services)

Extensive coordination between the MVLTROG, MVRPC (leading community recovery), the jurisdictions, and the organizations that are working both in tornado recovery and ongoing community support to ensure seamless transition

**WHAT  
DO YOU** *think?*

Do you have suggestions for the transition?

# Pathways Project



- Affordable Housing + Neighborhood Stabilization
- Provide qualified tornado-impacted renters with opportunities to become homeowners
- Critical Partners – Jurisdictions, County, Land Bank, Home Ownership Center, County Corp, VOAD Build Teams, MVLTRG, The Dayton Foundation, Habitat, Mike Battaglia
- TDF Fund - *Tornado Survivors' Pathway to Home Ownership #8561*



# Pathways Project – Applicants

**14 of 18 families from our initial outreach to case managed renters have applied**

- Twelve are African American
- Seven of the families have children in the home
- One is a veteran and two have disabilities
- All but one family has full time employment (one is unable to work)
- Most are currently spending between 36 and 40% of their income on rent
- Current rents (excluding the two subsidized applicants) range from a low of \$550 to a high of \$1200 – median of \$725

# Pathways Project – Properties – Phase 1

Phase 1 – 2021 (or first half of 2021 depending on resource availability)

Targeting 6 new builds and 2-3 rehabs

- Trotwood – 3 new builds, 2 rehabs
- City of Dayton – 1 new build, potentially 1 rehab
- Harrison Township – 2 new builds

Phase 1A – initial seed funded builds while waiting on CBDG/DR funding release (anticipated Q1 2021)

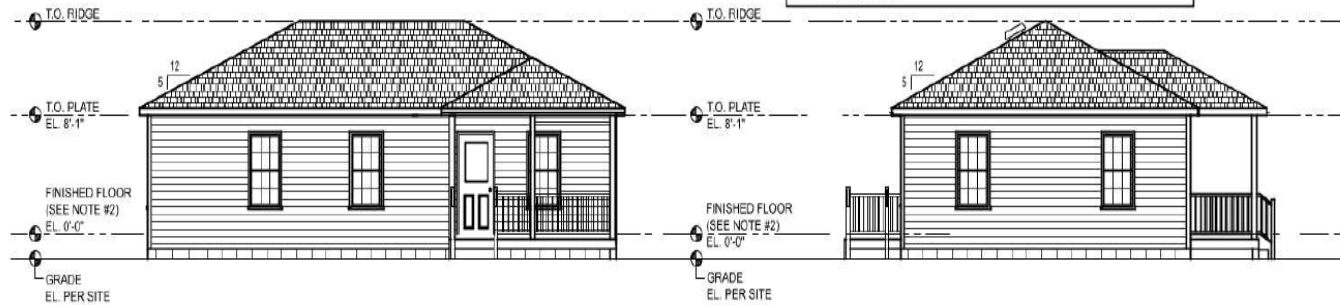


# Phase 1A New Builds

## NOTES:

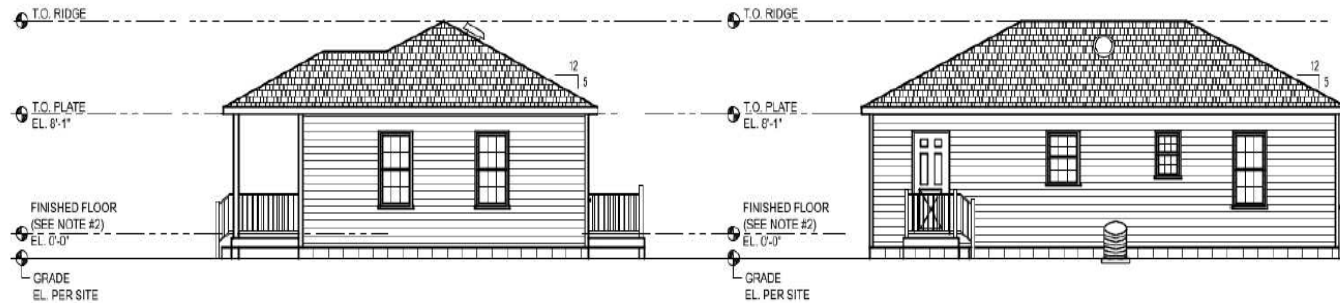
1. REFER TO A-0.0 FOR GENERAL NOTES.

2. FINISHED FLOOR ELEVATION SET BY ELEVATION CERTIFICATE + 1'-0" (MDS RECOMMENDATION).



1 FRONT ELEVATION  
D-1.0

2 SIDE ELEVATION  
D-1.0



3 SIDE ELEVATION  
D-1.0

4 REAR ELEVATION  
D-1.0

3 - BED - 2 - BATH - HOUSE  
OPTION #2  
STENWALL FOUNDATION  
26'X42' = 1092 SQ. FT.

DRAWN BY: IMS  
SHEET TITLE:  
SIDE ELEVATIONS

SHEET NO.  
**D-1.0**  
DATE: 09/02/16  
REV.

# Phase 1A Build Sites

Harrison Township

4189 Saylor

Sinclair Construction  
Technologies

Trotwood

4646 Marlin

Mennonite Disaster  
Services





# Phase 1A Rehab Site

Trotwood – 4658 Marlin  
Brethren Disaster  
Ministries

Presbyterian Disaster  
Assistance

Next Door to 4646 Marlin  
new build

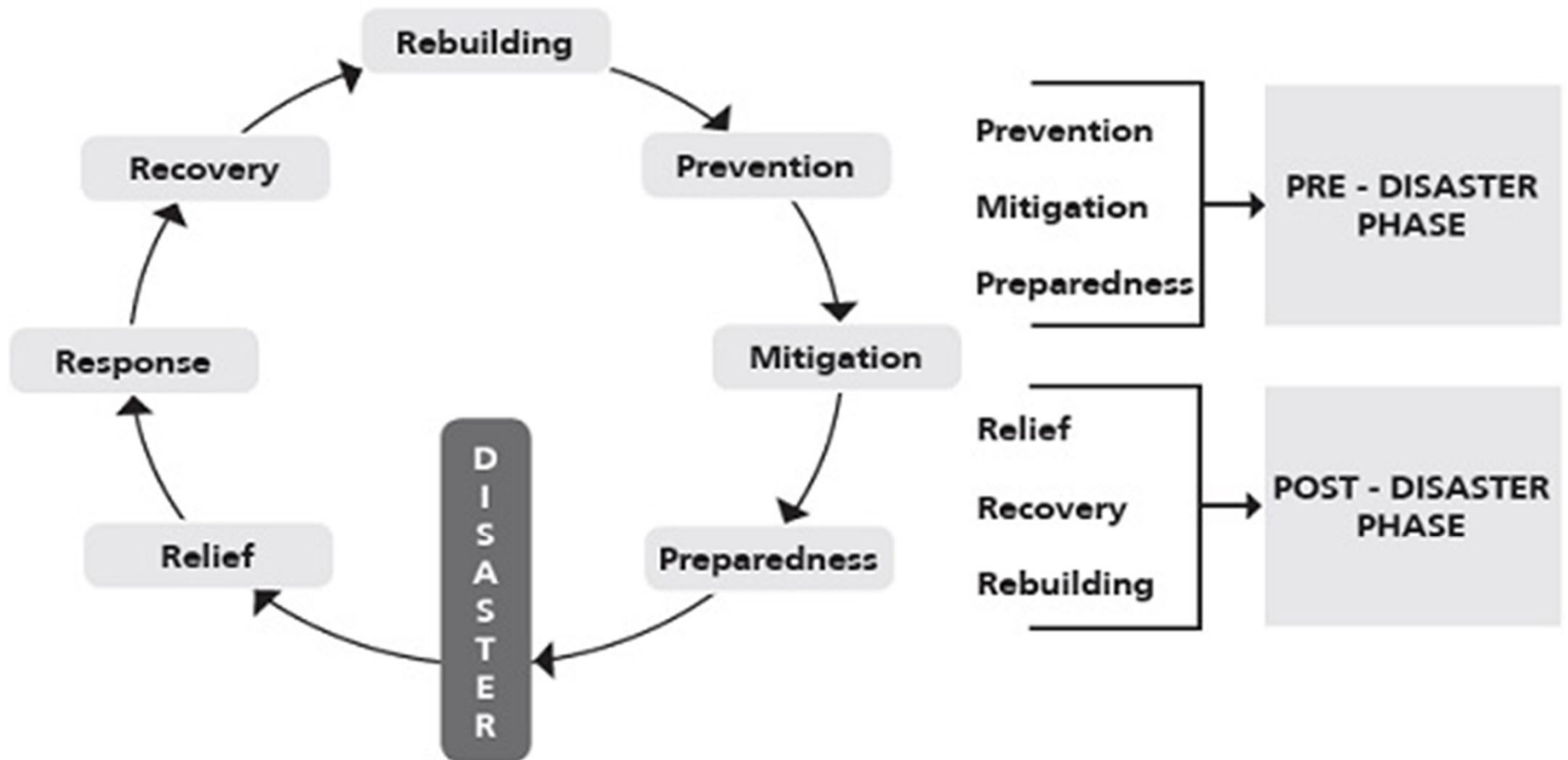


# WHAT DO YOU *think?*

Who could we approach for additional resources to support this project?

# REGIONAL RESILIENCY PLANNING

Figure 1. The Disaster Management Cycle and Phases

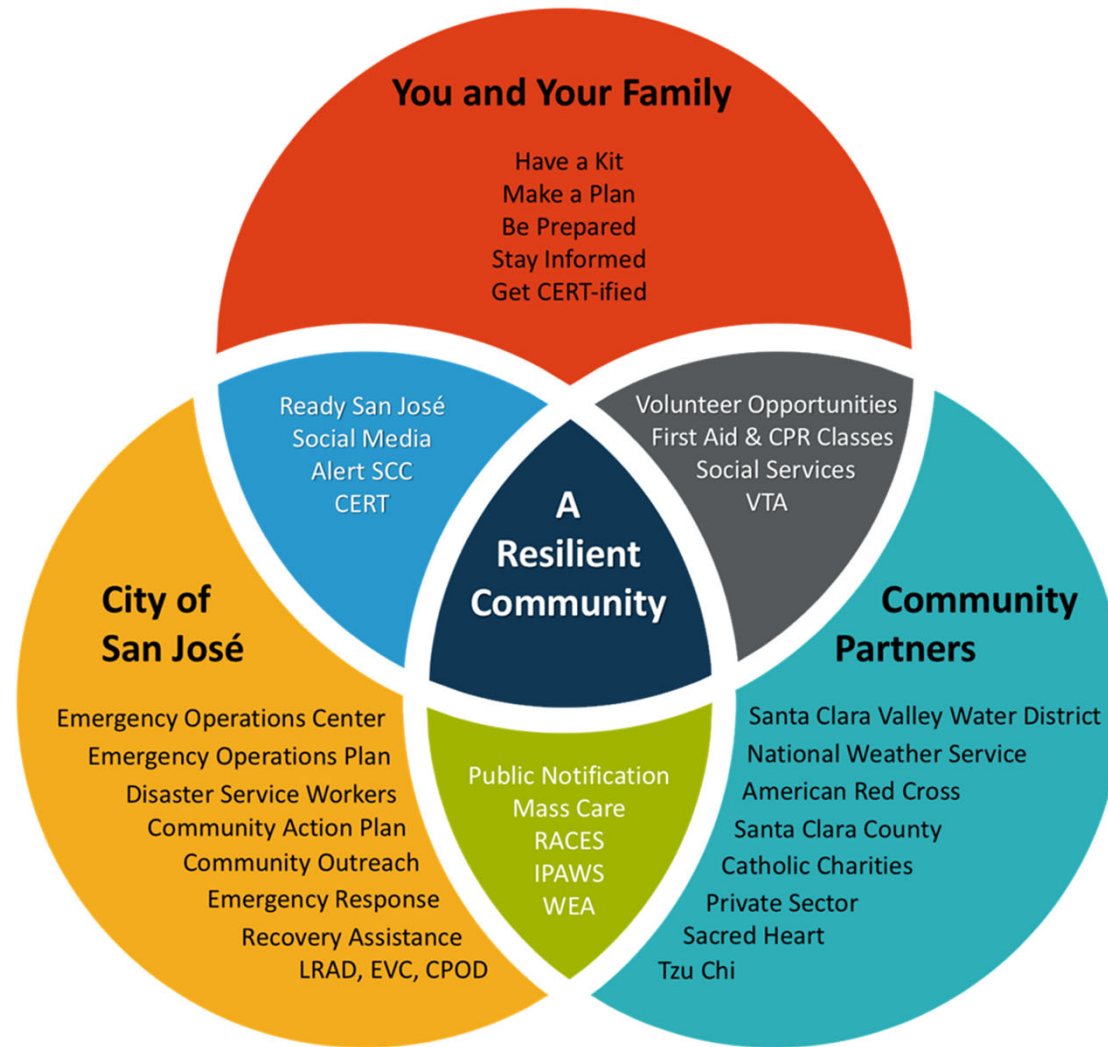


Source. Miththapala (IUCN), 2008



# REGIONAL RESILIENCY PLANNING

## Community Resilience: We All Play A Role



# WHAT DO YOU *think?*

What do you feel we need to capture as we begin to document a resiliency plan?

# PRIVATE PROPERTY DEBRIS REMOVAL

---

There remains a need for removal of tree debris on private properties throughout the Region.

Most of the removal that could be accomplished by volunteers has happened.

What remain are partially downed or significantly damaged trees that will need to be removed by experts.

While we recognize the need, our focus remains on safe and secure housing for survivors.





# WHAT DO YOU *think?*

Are there resources or innovative partnerships  
that could help address this need?



ADJOURN