



# Cultural Preservation: Advancing Equity in Communities

*From Kansas City to Birmingham*

MVRPC - Regional Equity Initiative

June 21, 2021

Denise E. Gilmore

Senior Director, Division of Social Justice & Racial Equity

City of Birmingham, AL

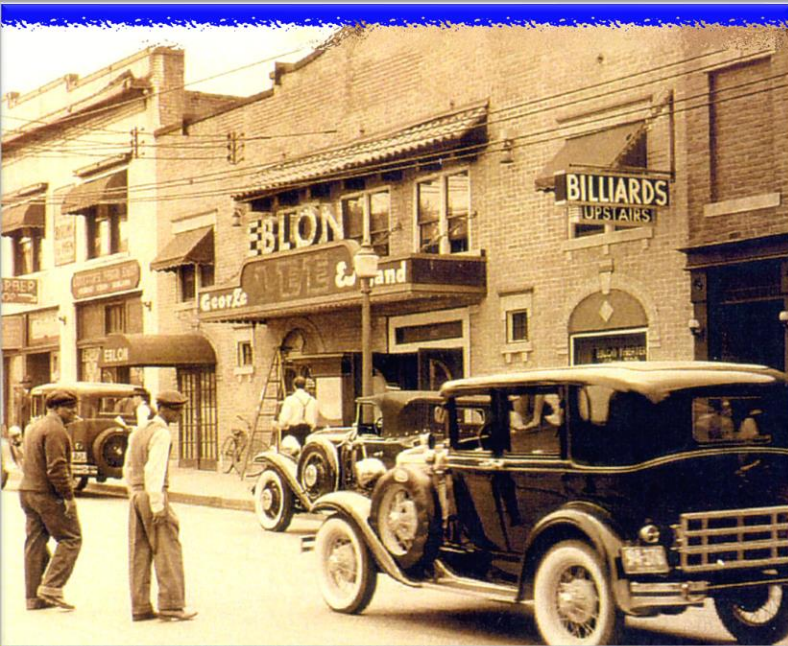
# Jazz District Redevelopment Corp. Kansas City, Missouri



PUTTING PEOPLE FIRST



# Where it began!



Buck O'Neil



Satchel Paige

**Legendary Kansas City Monarchs**



[illegible]

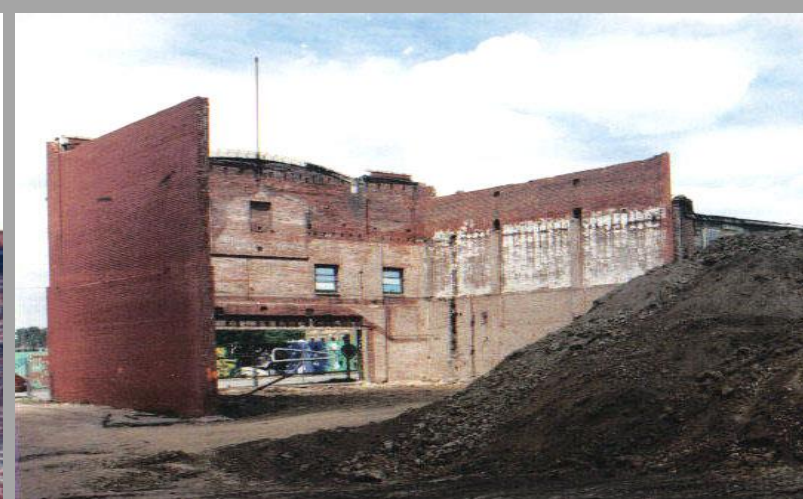
- K. Amory - vacant  
L. Hampton - vacant  
M. Kansas City Call Paper  
N. Grace Temple  
O. Zodiac Motorcycle Club  
P. Rochester Hotel  
Q. Historic Mutual Musicians Foundation  
R. Centennial United Methodist Church  
S. Historic Atkins School  
T. The Full Employment Council

- U. The Urban League
- V. The Peachtree
- W. House of Hits
- X. The Black Chamber of Commerce
- Y. Pouncey Bldg.
- Z. Redvine
- AA. The Buck O'Neil Research Center
- BB. The Negro League Base Ball Museum
- CC. Highland Houses
- DD. Centennial Villa Apartments
- EE. Jay McShann Outdoor Pavilion









# Historic GEM Theater



# Evaluating Project Success

## Social Equity

- **Community engagement/public involvement**
- **Visible difference in underserved and underinvested communities**
- **Improves quality of life for incumbent residents**
- **Preserves cultural and historical legacies**

## Economic Outcomes

- **Collaborative initiatives among cultural resources**
- **Creates equitable opportunities for incumbent residents**

## Environmental Outcomes

- **Repurposes and preserves existing structures**
- **Increases livability**



# Apartments at Highland Place

*5 Remaining Historic Houses, 1880-1920*



**Before, 2006**





# Historic Rochester Hotel



Before, 2006



After, 2013



# Cultural Placemaking: Jazz District Patio Terrace



*Before, 2009*



Environmental “Green” Features

**Rain Garden**

**Pervious pavers**

**Low-maintenance landscaping**



# Cultural Placemaking: Iconic 18<sup>th</sup> & Vine Gateway Sign







# National Trust for Historic Preservation Washington, DC

- Detroit
- Philadelphia
- Washington, DC
- Birmingham
- Atlanta
- Louisville



PUTTING PEOPLE FIRST



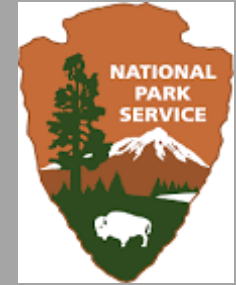


**PUTTING PEOPLE FIRST**

[WWW.BIRMINGHAMAL.GOV](http://WWW.BIRMINGHAMAL.GOV)

# Birmingham Civil Rights National Monument

## Birmingham, Alabama



















## Kelly Ingram Park

**Then:**

**The Children's Crusade – May 2, 1963  
Site where Bull Conner blasted water from fire  
hoses and unleashed dogs on children**

***Today:***

***A Place of Revolution and Reconciliation***







A. G. Gaston





# Historic Legacy









# Birmingham, Alabama



**Historic Legacy**

**Cultural Heritage**

**People-Centered**

**Authentic**

**Sameness is a minus**

**Experience**

**Cultural Tourism**



# Division of Social Justice & Racial Equity



## To create a just and equitable Birmingham

Address community inequities affecting underserved residents

Transform our city government's approach to problem-solving social challenges

Create access for residents to engage city government

Establish advisory groups and commissions that advise the Mayor & City Council

Reduce violence through holistic peace strategies

Improve the quality of life for all Birmingham residents

- Social Justice
- Academy of Civic Engagement
- Faith Leaders Community
- Cultural Preservation
- Office of Peace & Policy
- Office of Re-Entry
- LGBTQ+ Affairs
- Immigrant Affairs



# Division of Social Justice & Racial Equity

Justice & Equity Initiatives: (lead, collaborate, facilitate)

- Internal
  - Magic City Recovery Plan
  - Human Resources Policies
  - Diversity, Equity & Inclusion
  - Municipal Equality Index perfect score of 100
  - Municipal ID
  - Election Day Holiday
  - Lactation Room
- Public-Facing
  - Human Rights Commission
  - Non-Discrimination Ordinance
  - Academy of Civic Engagement
  - Birmingham Civil Rights National Monument Stakeholders
  - Faith Leaders Roundtable
  - Women's Initiative
  - LGBTQ+ Advisory Board
  - Civilian Review Board
  - Public Safety Task Force







BIRMINGHAM  
THE WORLD IS  
WATCHING

"History will have to record the greatest tragedy of this period of social transition was not the strident clamor of the bad people, but the appalling silence of the good people."

Martin Luther King, Jr.

Photo Credits: Jazz District Redevelopment Corp., American Jazz Museum, Negro Leagues Baseball Museum, National Trust for Historic Preservation, City of Birmingham





# CHALLENGES AND TRIUMPH

2  
0  
2  
0

A  
N  
N  
U  
A  
L

R  
E  
P  
O  
R  
T

Division of Social Justice & Racial Equity  
Mayor's Office, City of Birmingham

<https://www.birminghamal.gov/socialjustice>