



Regional Safety Analysis

2014-2016 Crash Data
May 2018: Board of Directors



Goals of Analysis



**Monitor
Crash
Trends**

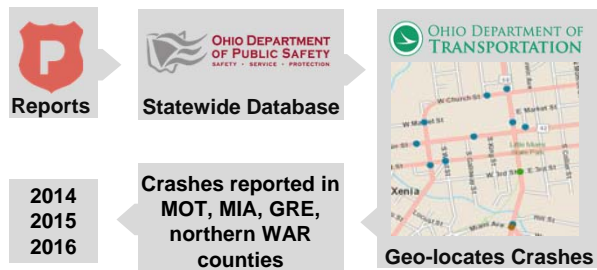


**Locate High
Crash
Locations**

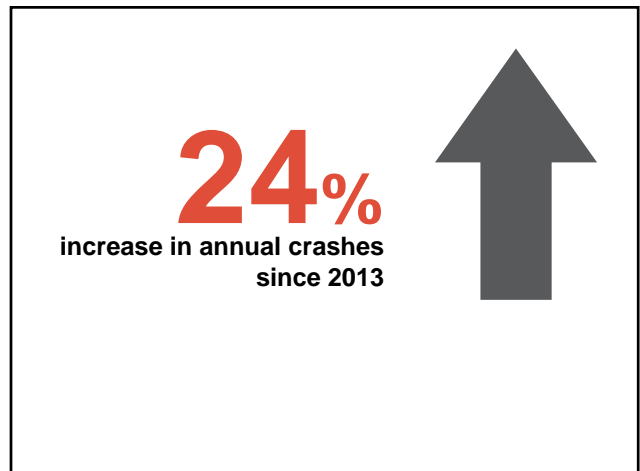
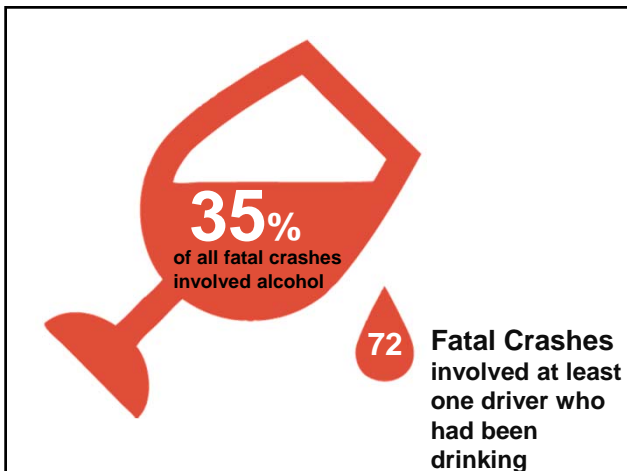
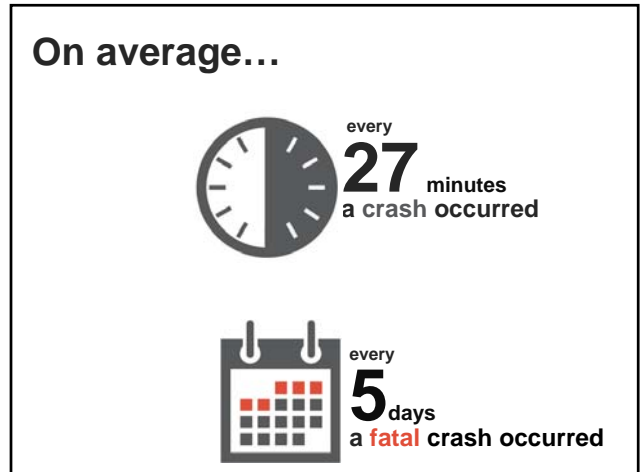
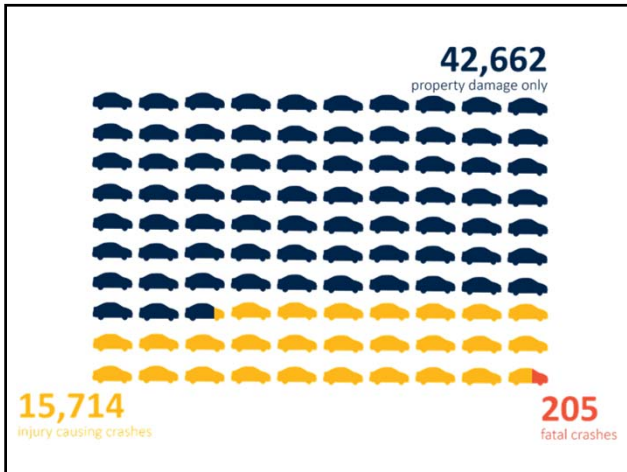


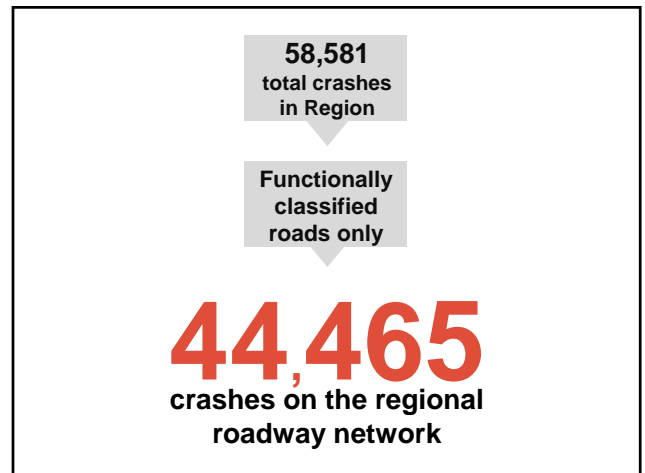
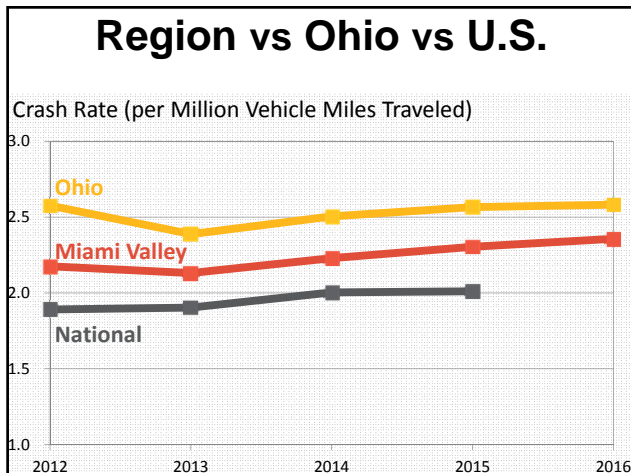
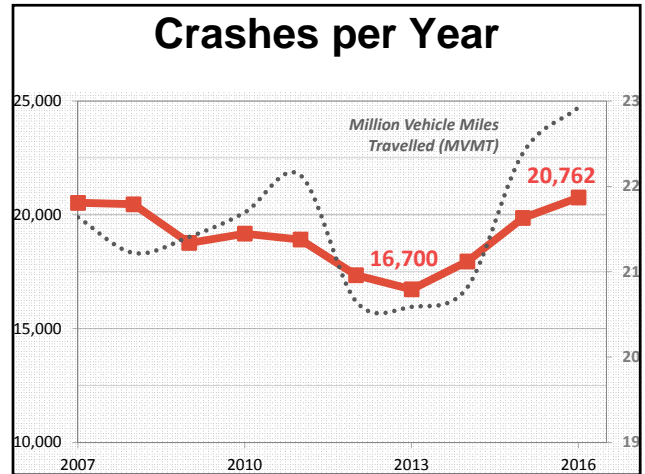
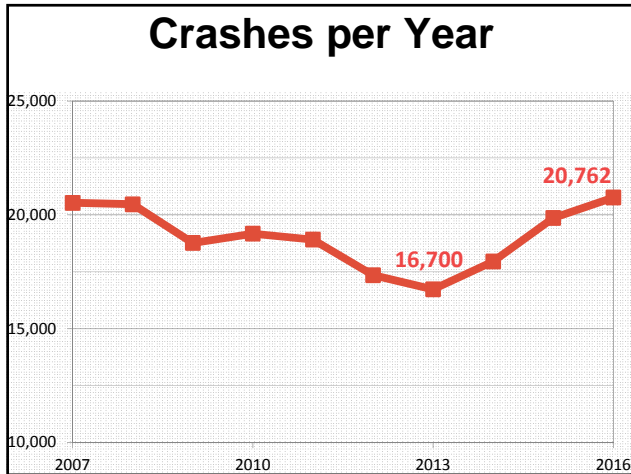
**Make
Roadway
Improvements**

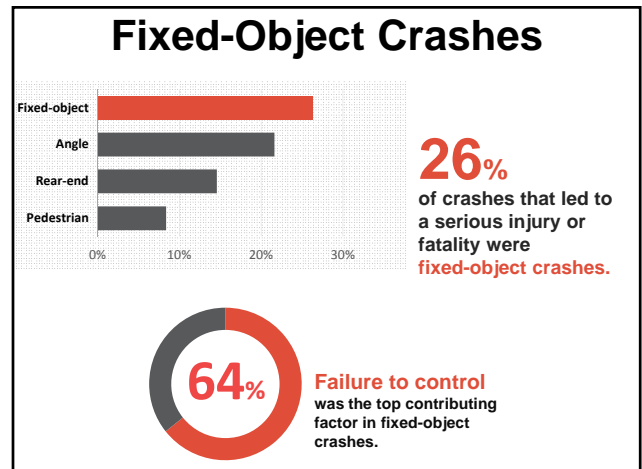
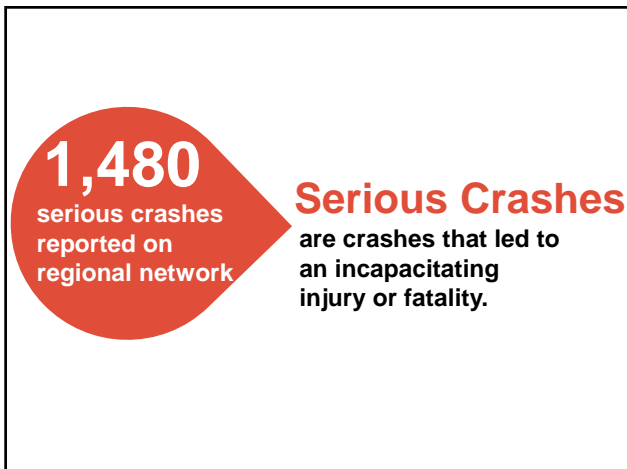
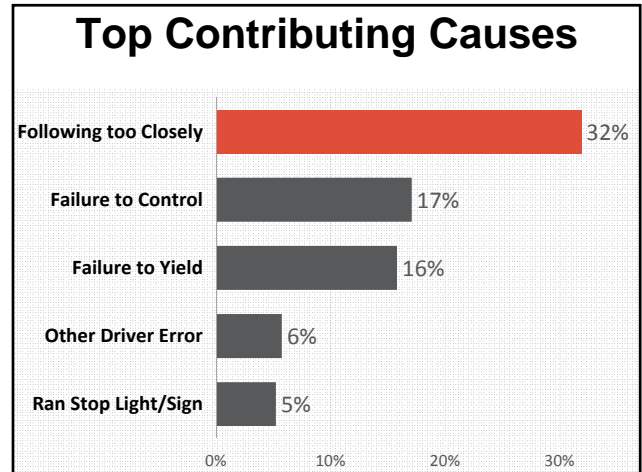
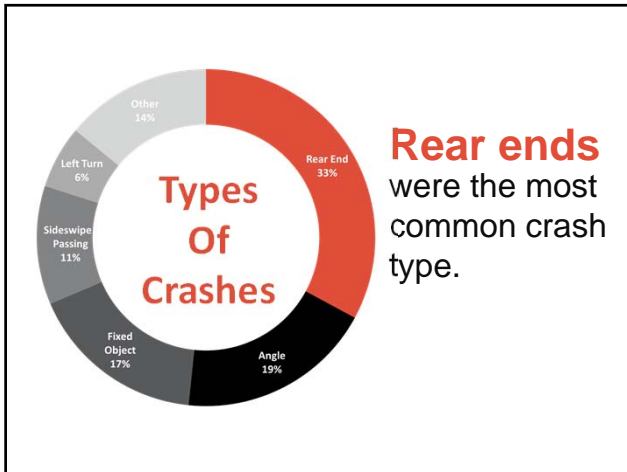
The Data



58,581
crashes reported in the Region
from 2014 through 2016

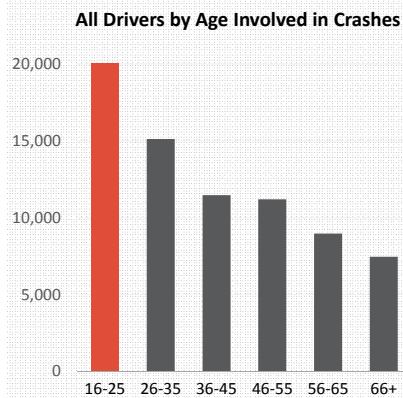






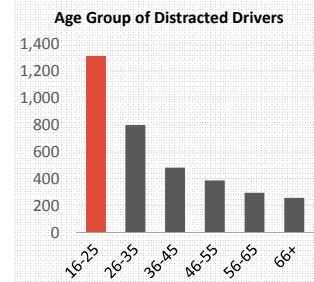
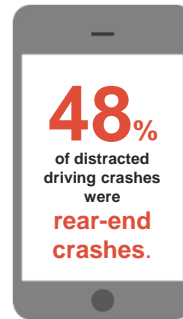
Crashes with Youth

40%
of crashes
involved someone
**16 to
25 years old.**

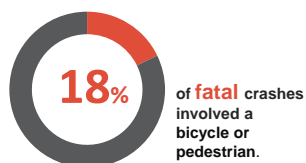
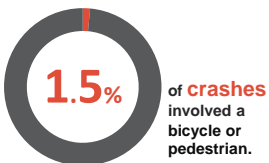


Distracted Driving Crashes

19% of distractions were a driver
using a phone or texting.

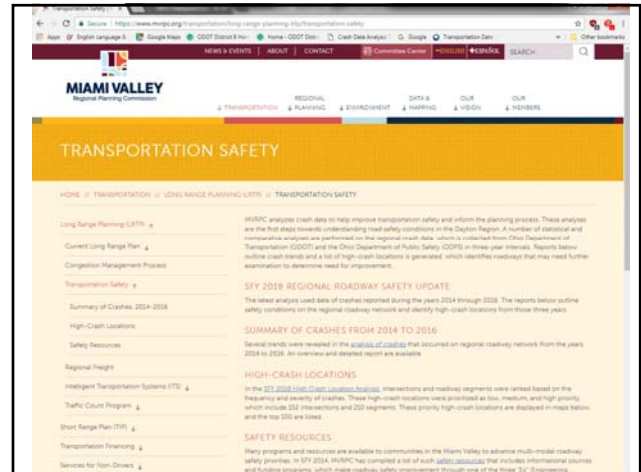
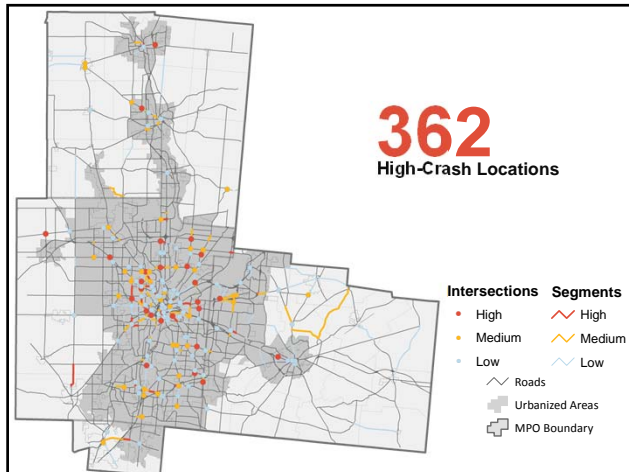


Bike & Ped Crashes



High-Crash Locations

- Regional road network was divided into segments & intersections (excl. highways).
- Ranked by crash frequency and severity.
- Minimum of 10 crashes in 3 years.



Next Steps

- Conduct crash analysis every 3 years
 - Performance measure, FAST Act
 - Identify high-crash locations
 - Criterion for project evaluation system

Next Steps

- Assist in safety studies
 - ODOT Safety Program
 - Safe Routes to School
 - Provide crash data information



mvrpc.org/transportation/long-range-planning-lrtp/transportation-safety

Aaron Lee
937-223-6323
alee@mvrpc.org

Ana Ramirez
937-223-6544
aramirez@mvrpc.org