



LONG TERM COMMUNITY DISASTER RECOVERY UPDATES

RETREET PROGRAM



KEEP AMERICA BEAUTIFUL®

- The Miami Valley TREEcovery Campaign, led by Keep America Beautiful through their RETREET program, is a multi-year disaster recovery effort to heal the landscape devastated by the tornadoes.
- Owners of residential properties in the Miami Valley that were impacted by the tornadoes can visit www.retreet.org/mvvc to complete a simple online form to request that free trees be planted for them.
- Two plantings have been held to date
 - October 2021
 - April 2022
 - 174 trees have been planted so far
- Next planting will be October 22, 2022



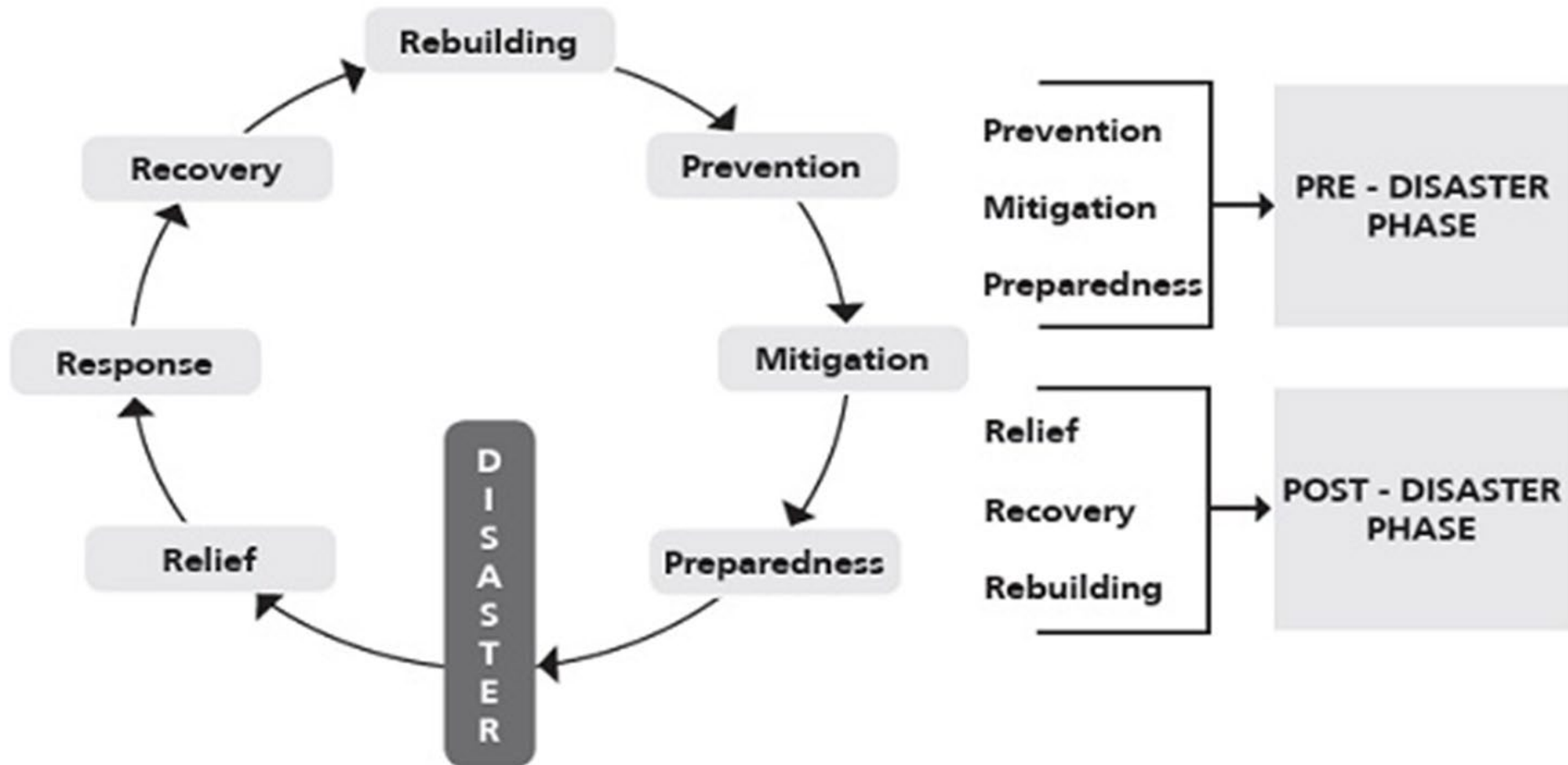
COMMUNITY RECOVERY PROJECT AWARDS

COMMUNITY / PARTNER	PROJECT	GDDRF AWARD
Five Rivers MetroParks	Foxton Court Demo	\$200,000—1 st Round
Harrison Township	Neff Road Demo	\$17,200—2 nd Round
City of Beavercreek	Park Restoration	\$108,191—2 nd Round
Harrison Township	Northridge Community Park-New Build	\$39,212.90—3 rd Round
Harrison Township	Sinclair Park Restoration	\$261,000—3 rd Round
TOTAL PROJECT AWARD		\$625,603.90



REGIONAL RESILIENCY PLANNING

Figure 1. The Disaster Management Cycle and Phases



Source. Miththapala (IUCN), 2008

REGIONAL RESILIENCY PLANNING



National Disaster Recovery Framework

*Second Edition
June 2016*



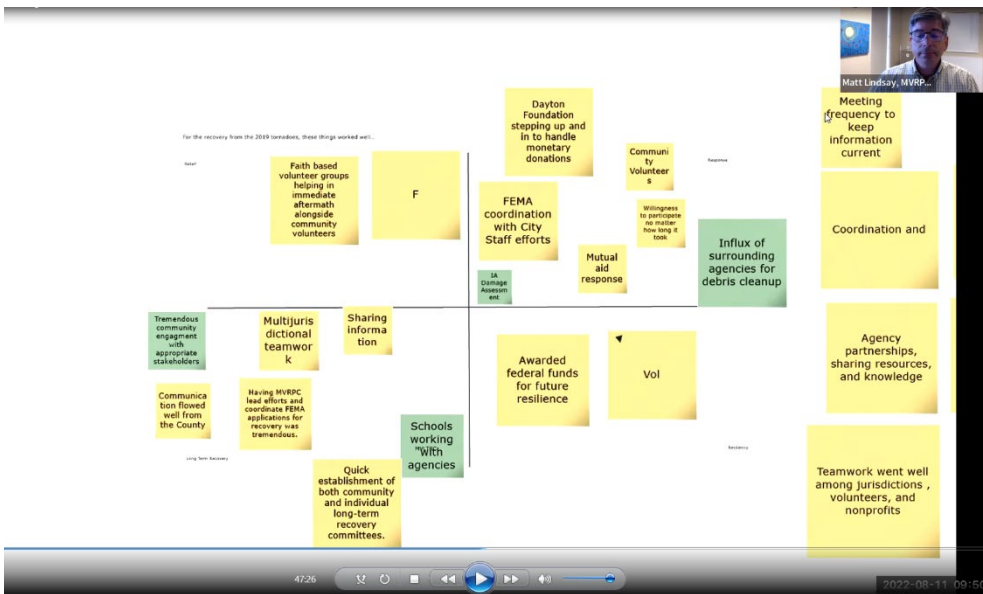
Recovery Support Functions

Community Planning & Capacity Building	Unifies and coordinates expertise and assistance programs between both governmental as well as non-government partners to ensure engagement of the whole community in planning and managing recovery.
Economic Recovery	Helps levels of government and the private sector sustain or rebuild businesses and employment.
Health & Social Services	Supports recovery in public health, health care facilities and coalitions, and essential social services.
Housing	Coordinates resources for adequate, affordable, equitable, and accessible housing to support the whole community.
Infrastructure Systems	Helps restore infrastructure systems and services, and improves resilience for future hazards.
Natural & Cultural Resources	Works to protect and restore natural and cultural resources and historic properties.



REGIONAL RESILIENCY PLANNING

- Planning Underway:
 - August 11th held first Regional Resiliency Planning Workshop
 - Reviewed need for preparedness planning & received feedback from jurisdictions & community partners on 2019 tornadoes
- Next Step:
 - to conduct SOAR (Strengths, Opportunities, Aspirations, Risks) Analysis with smaller planning groups based on Recovery Support Functions



DEVELOPMENT OF A REGIONAL COAD

- Community Organizations Active in Disasters (COAD) is a national best practice for emergency preparedness.
- A COAD is a local group of community organizations that coordinate emergency human services.
- Previously, the MVLTROG served as the COAD for the 2019 Memorial Day Tornadoes.
- MVRPC is coordinating with community partners to establish a COAD in the Miami Valley as part of our resiliency planning efforts.

FINANCE (Dayton Foundation)	REBUILD & REPAIR (LSS)	DISASTER CASE MANAGEMENT (CSS)
Financial Asset Map	Repair & Rebuild Construction Estimates Project Coordination Material acquisitions and distribution	Intake and Referral Develop Recovery Plans Coordinate w/ Recovery Partners in Delivery of Services and Resources
EMOTIONAL & SPIRITUAL CARE (LSS/PMV)	Code Compliance FHLB resources	VOLUNTEER MANAGEMENT
Crisis Intervention Develop faith based partnership network Collaborate with disaster case managers Canvas for unmet needs	MATERIAL MANAGEMENT (SVDP)	Identify Volunteer Opportunities Recruit Qualify & Skill Assess (for select assignments) Assign / Schedule Hospitality & Debrief
	In Kind Donations Warehousing Distribution	



WHAT DO YOU *think?*

What do you feel we need to capture as we begin to document a resiliency plan?



DISASTER RECOVERY LEADERSHIP BOARD TRANSITION PLAN

MIAMI VALLEY LONG TERM DISASTER RECOVERY

The Miami Valley will build a comprehensive, coordinated long term disaster recovery system using the National Disaster Recovery Framework (NDRF) to serve all impacted counties. The NDRF provides guidance to enable recovery by defining recommended roles, responsibilities, coordination and planning among all jurisdictions. Based on decades of disaster response best practices, it focuses on how to restore, redevelop and revitalize the health, social, physical, economic, natural and environmental fabric of community and build resiliency for the future.

LONG TERM INDIVIDUAL DISASTER RECOVERY NETWORK

(Chair, Vice-Chair, Secretary, Fiscal Sponsor)

Recovery Director, Individual and Household – Laura Mercer

RESOURCE TABLE: Made up of organizations that have resources to give individuals. Will come and go based on what they have to give.

FINANCE

(Dayton Foundation)

REBUILD & REPAIR

(LSS)

DISASTER CASE MANAGEMENT

(CSS)

Financial Asset Map

Repair & Rebuild

Construction Estimates

Project Coordination

Material acquisitions
and distribution

Code Compliance

FHLB resources

VOLUNTEER MANAGEMENT

Crisis Intervention

Develop faith based
partnership network

Collaborate with
disaster case managers

Canvas for unmet
needs

MATERIAL MANAGEMENT

(SVDP)

In Kind Donations

Warehousing

Distribution

Identify Volunteer
Opportunities

Recruit

Qualify & Skill Assess
(for select assignments)

Assign / Schedule

Hospitality & Debrief

MIAMI VALLEY DISASTER RECOVERY LEADERSHIP BOARD

This high-level advisory group will support both the individual and community long term recovery networks.

It will be comprised of 16 community leaders.

LONG TERM COMMUNITY DISASTER RECOVERY NETWORK

Miami Valley Regional Planning Commission-Brian O. Martin, Executive Director

Recovery Director, Community - TBD

HOUSING

(HUD, USDA, DOJ, FEMA)

Affordable Housing

Permitting & Zoning

Strengthen Housing
Market

Land Use Planning

Build Inclusive &
Sustainable Communities

Mitigation Measures

Resilient Construction
Implementation

Homeownership
Programs

COMMUNITY PLANNING & CAPACITY BUILDING

(FEMA)

Community assessments

Planning, managing and
implementing recovery
post-disaster

ECONOMIC RECOVERY

(DOC, SBA, USDA, DHS, DOL,
USTREAS)

Business Recovery

Economic Development

Workforce
Development

Community
Investments

NATURAL & CULTURAL RESOURCES RECOVERY

(DOI, EPA, FEMA)

Historic Preservation

Environmental planning

Green Space

Community well-being

Resource Protection

Arts/Culture/History

HEALTH & SOCIAL SERVICES RECOVERY

(DHHS, CNCS, USDA, DOC, DHS,
NPPD, DHS/CRCL, HUD, DOI,
DOJ, DOL, EPA, FEMA)

Restore and improve
health care and social
service capabilities

Increase resilience and
sustainability

Promote independence
and well-being of
community members

Build community
networks

INFRASTRUCTURE SYSTEMS RECOVERY

(USACE, DOE, DHS, DOT,
FEMA)

Identify/prioritize
critical infrastructure
systems and assets

Create an interagency,
inter-jurisdictional
recovery planning

RECOVERY TIMELINE FOR INDIVIDUAL NETWORK: 1-3 YEARS

Draft 01.02.2020

RECOVERY TIMELINE FOR COMMUNITY NETWORK: 1-10 YEARS

DISASTER RECOVERY LEADERSHIP BOARD TRANSITION PLAN

Original Terms of Office:

Terms will be 3 years total and will match with the three phases within the recovery timeline.

Original Recovery Timeline:

Phase One	Phase Two	Phase Three
<ul style="list-style-type: none">• Starts January 2020• Quarterly Meetings• Focus on Individual Recovery• Drafting of funding strategy and high level strategic plan• Connecting resources to unmet technical and administrative needs	<ul style="list-style-type: none">• Starts January 2023• Triannual meetings• Ongoing implementation of strategies• Evolution of focus to resiliency and preparedness• Potential for policy advancement on a regional level	<ul style="list-style-type: none">• Starts January 2026• Biannual meetings• Ongoing implementation of strategies• Move in to evaluative stages• Planning for continuity and sustainability



DISASTER RECOVERY LEADERSHIP BOARD TRANSITION PLAN

Proposed Terms of Office:

Opportunity to continue current term for one additional year. Evaluate status of Leadership Board oversight on an annual basis

Proposed Recovery Timeline:

Phase One-Complete	Phase Two
<ul style="list-style-type: none">• Starts January 2020• Quarterly Meetings• Focus on Individual Recovery• Drafting of funding strategy and high level strategic plan• Connecting resources to unmet technical and administrative needs	<ul style="list-style-type: none">• Starts January 2023• Biannual meetings• Ongoing implementation of strategies• Focus to resiliency and preparedness planning• Potential for policy advancement on a regional level• Evaluate stages





ADJOURN