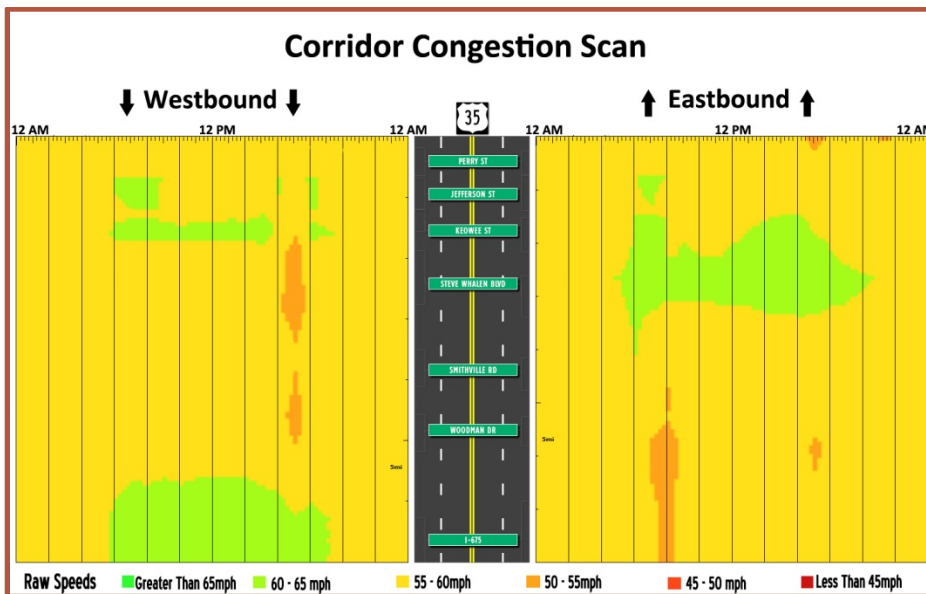
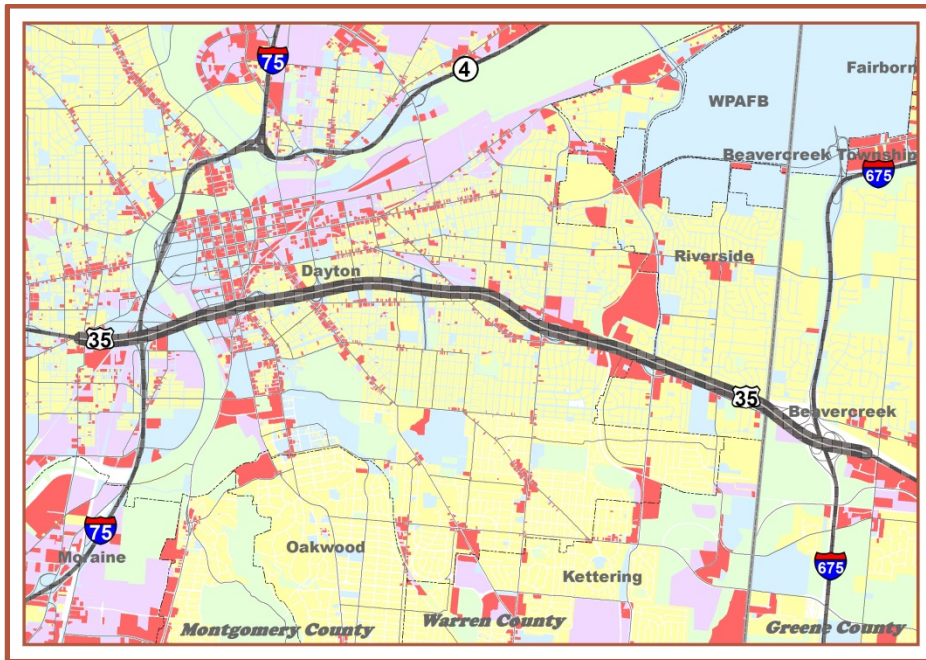


Figure 2.11 — Corridor 8: US 35- I-75 to I-675



## Profile & Statistics

Corridor Profile		
Length	7.29 miles	
Functional Class	Freeway	
Access Control	Limited	
Lanes	4 - 6	
Intelligent Transportation Systems	Designated Corridor? Yes	
	ITS Deployment: Cameras, Highway Advisory Radio	
Served by Transit?	No	
Part of National Freight Network?	No	
Intermodal Connector / Facility	No	
Corridor Summary Data		
Daily Volume: 2010/2040 (est.)	72,300	81,100
Truck Volume: 2010/2040 (est.)	4,600	5,600
Posted Speed	55 mph	
Average Speed (AM Peak Hour: 7-8AM)	58.6 mph	
Average Speed (PM Peak Hour: 4-5PM)	58.5 mph	
V/C Ratio: 2010/2040 (est.) – AM Peak	0.87	0.97
V/C Ratio: 2010/2040 (est.) – PM Peak	0.85	0.94
Travel Time Index (2013 – Peak Hours)	1.01	
Cost of Vehicle Delay (2013)	\$1,146,666	
Total Crash / Crash Rate (2011-2013)	467 crashes	0.94 per MVMT

## Other Corridor Characteristics

- The US 35 corridor between I-75 and I-675 is an urban freeway surrounded by high to medium density residential areas as well as some commercial, institutional, and industrial uses.
- This corridor runs east-west connecting downtown Dayton to Greene County. A project to widen MOT-35 to three lanes is currently under development.