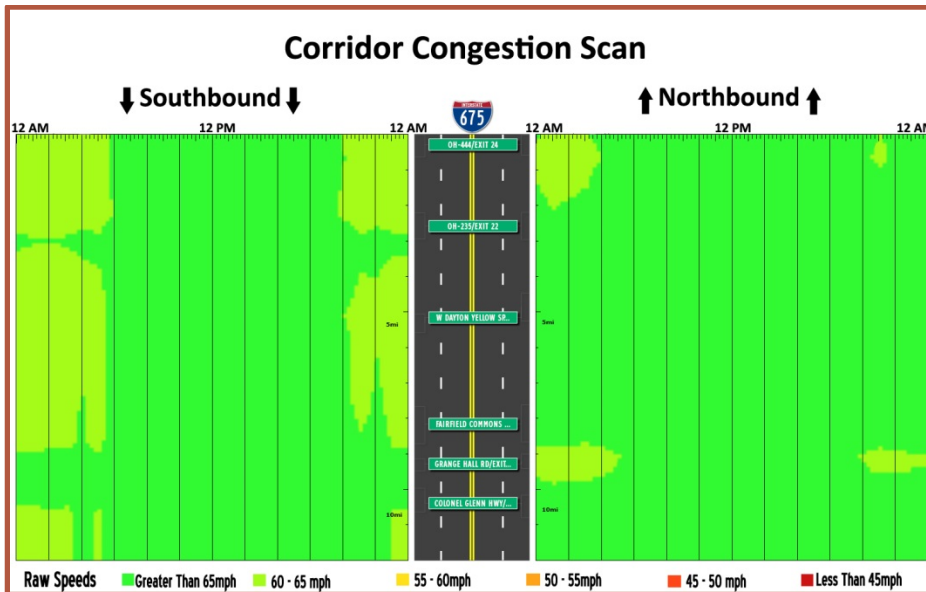
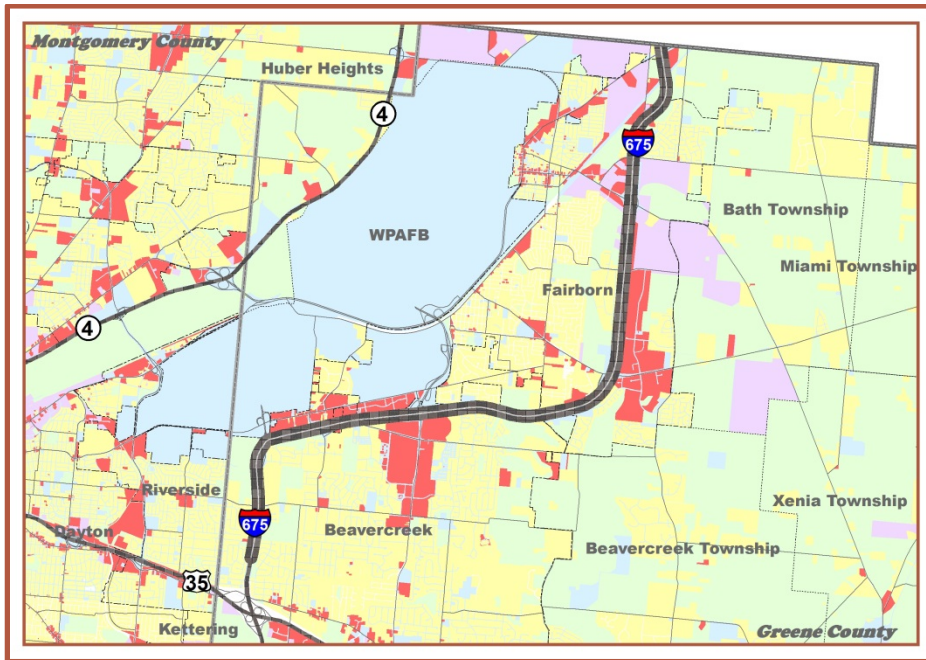


Figure 2.9 — Corridor 6: I-675- N of US 35



## Profile & Statistics

Corridor Profile		
Length	10.99 miles	
Functional Class	Interstate	
Access Control	Limited	
Lanes	4 - 6	
Intelligent Transportation Systems	Designated Corridor? Yes	
	ITS Deployment: Cameras	
Served by Transit?	No	
Part of National Freight Network?	No	
Intermodal Connector / Facility	No	
Corridor Summary Data		
Daily Volume: 2010/2040 (est.)	53,000	69,800
Truck Volume: 2010/2040 (est.)	7,900	11,200
Posted Speed	65 mph	
Average Speed (AM Peak Hour: 7-8AM)	67.1 mph	
Average Speed (PM Peak Hour: 4-5PM)	67.1 mph	
V/C Ratio: 2010/2040 (est.) – AM Peak	0.44	0.57
V/C Ratio: 2010/2040 (est.) – PM Peak	0.44	0.57
Travel Time Index (2013 – Peak Hours)	0.97	
Cost of Vehicle Delay (2013)	\$349,424	
Total Crash / Crash Rate (2011-2013)	578 crashes	0.90 per MVMT

## Other Corridor Characteristics

- The I-675 corridor, north of US 35, provides access to major retail facilities, Wright State University, and WPAFB. It is also a commuting corridor for medium density residential areas in Beaver Creek and Fairborn in Greene County.
- Completed between 1975 and 1984, this auxiliary interstate highway serves as an eastern bypass of Dayton for traffic that doesn't need to go through downtown Dayton and would otherwise have added to the congestion in the downtown area.