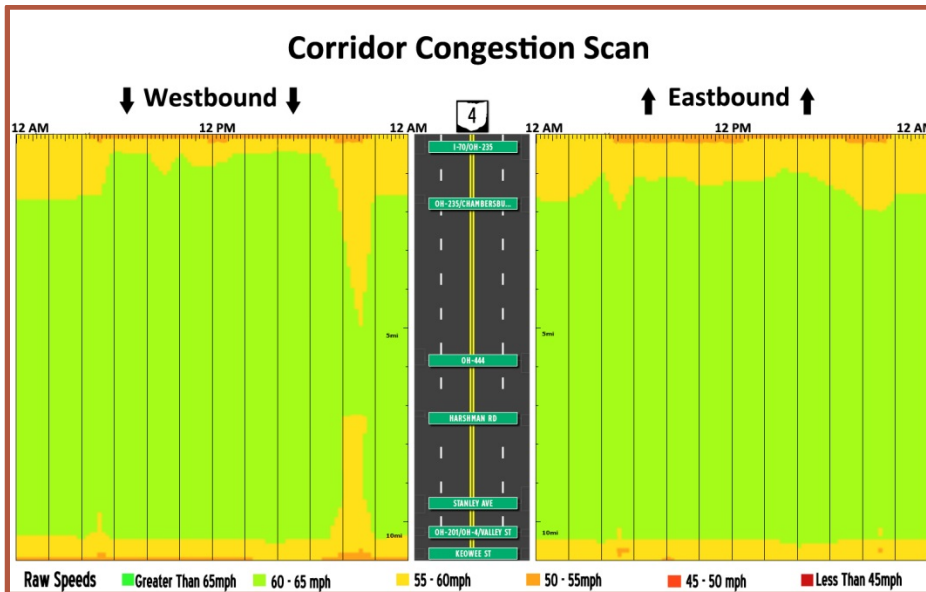
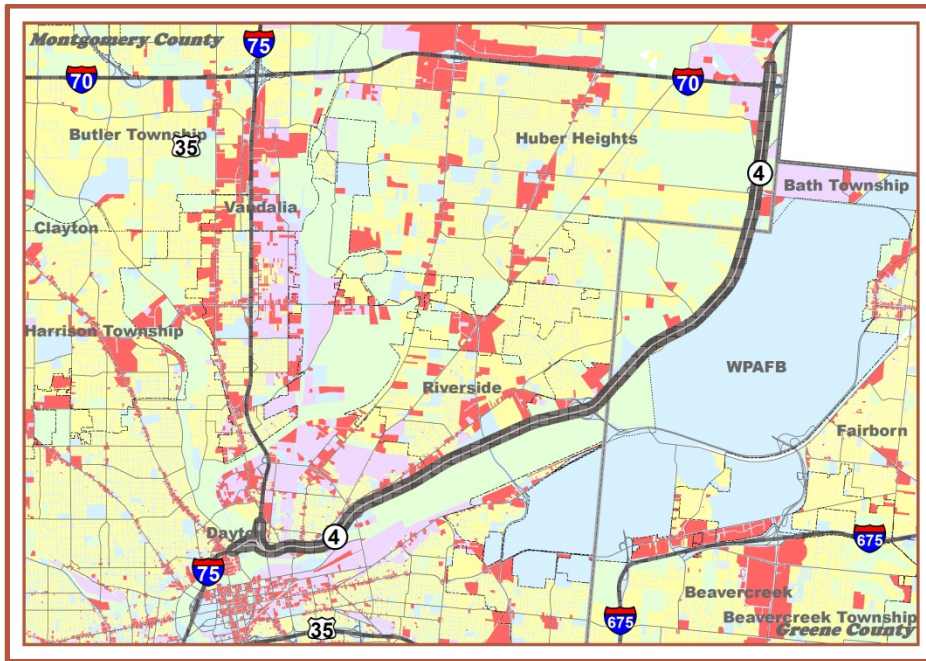


Figure 2.13 — Corridor 10: SR 4- I-75 to I-70



Profile & Statistics

Corridor Profile		
Length	10.67 miles	
Functional Class	Freeway / Other Principal Arterial	
Access Control	Limited	
Lanes	4	
Intelligent Transportation Systems	Designated Corridor? Yes	
	ITS Deployment: Cameras	
Served by Transit?	Yes – Express Route 1A	
Part of National Freight Network?	No	
Intermodal Connector / Facility	Yes; Valley Street Pipeline Terminal	
Corridor Summary Data		
Daily Volume: 2010/2040 (est.)	21,600	28,700
Truck Volume: 2010/2040 (est.)	1,700	4,700
Posted Speed	50 mph – 60 mph	
Average Speed (AM Peak Hour: 7-8AM)	61.5 mph	
Average Speed (PM Peak Hour: 4-5PM)	61.6 mph	
V/C Ratio: 2010/2040 (est.) – AM Peak	0.39	0.39
V/C Ratio: 2010/2040 (est.) – PM Peak	0.42	0.45
Travel Time Index (2013 – Peak Hours)	0.99	
Cost of Vehicle Delay (2013)	\$113,932	
Total Crash / Crash Rate (2011-2013)	152 crashes	0.58 per MVMT

Other Corridor Characteristics

- SR 4 between I-75 and I-675 connects Dayton to Springfield and provides access to the Wright Patterson Air Force Base in Fairborn. SR 4 also provides access to an intermodal connector (the truck-pipeline terminal off Valley Street) and surrounding industrial areas.