



Federal Certification Review Metropolitan Transportation Planning Process – September 2021

MVRPC Vision and Goals

Our Board of Directors' decisions, through strategic partnerships and staff efforts, contribute to the advancement of the Region's economic vitality, enhanced quality of life, strong sense of place, and expanded opportunities that attract and retain talented individuals and organizations to the Miami Valley Region. We have 4 goals:

Regional Stewardship

Partnerships

Vibrant Communities

**Sustainable Solutions
& Environment**

Shaping Our Region's Future Together



Members Map

MVRPC Members

As of June, 2021

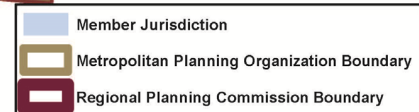
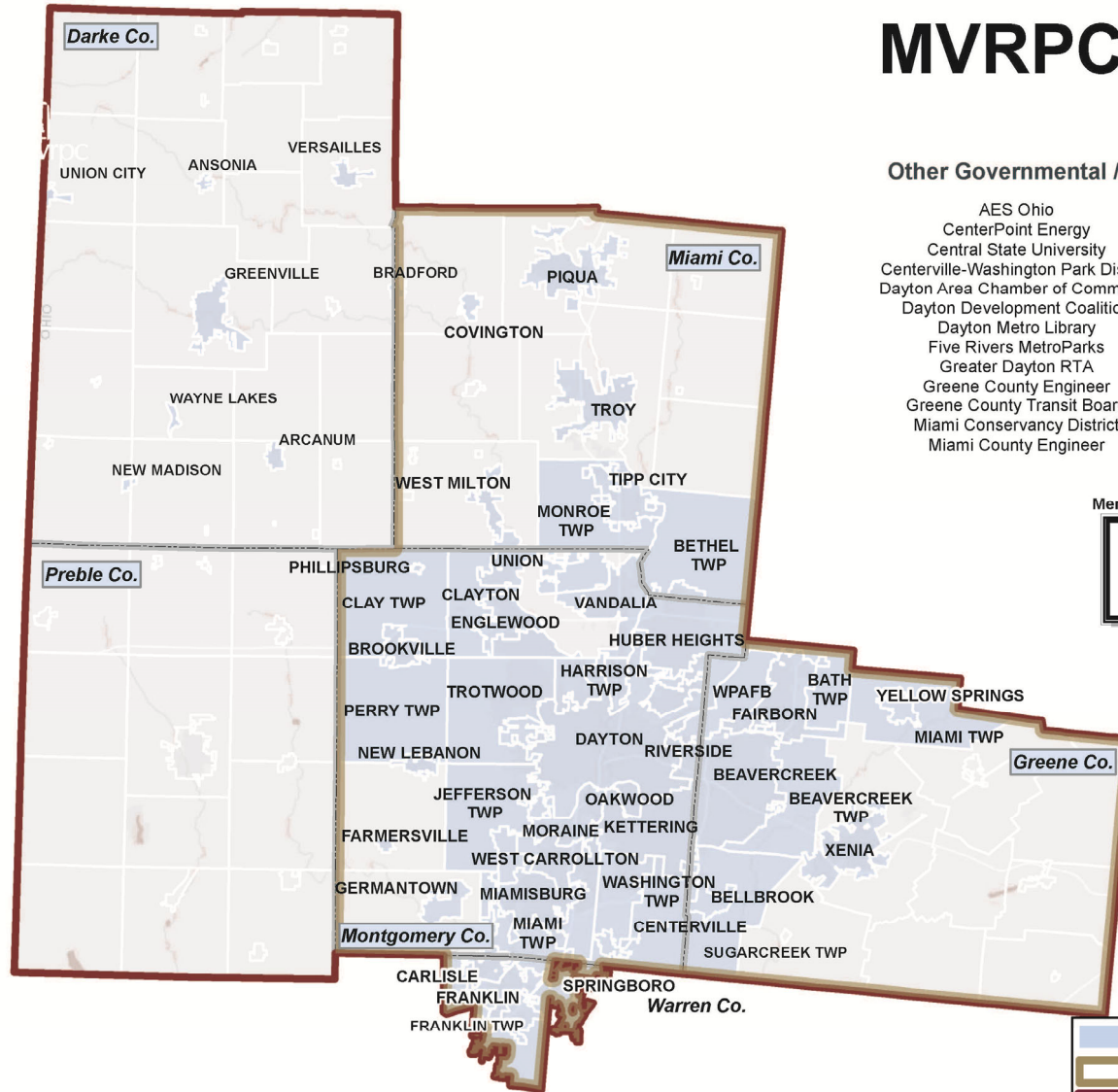
Other Governmental / Non-Governmental Members

AES Ohio
CenterPoint Energy
Central State University
Centerville-Washington Park District
Dayton Area Chamber of Commerce
Dayton Development Coalition
Dayton Metro Library
Five Rivers MetroParks
Greater Dayton RTA
Greene County Engineer
Greene County Transit Board
Miami Conservancy District
Miami County Engineer

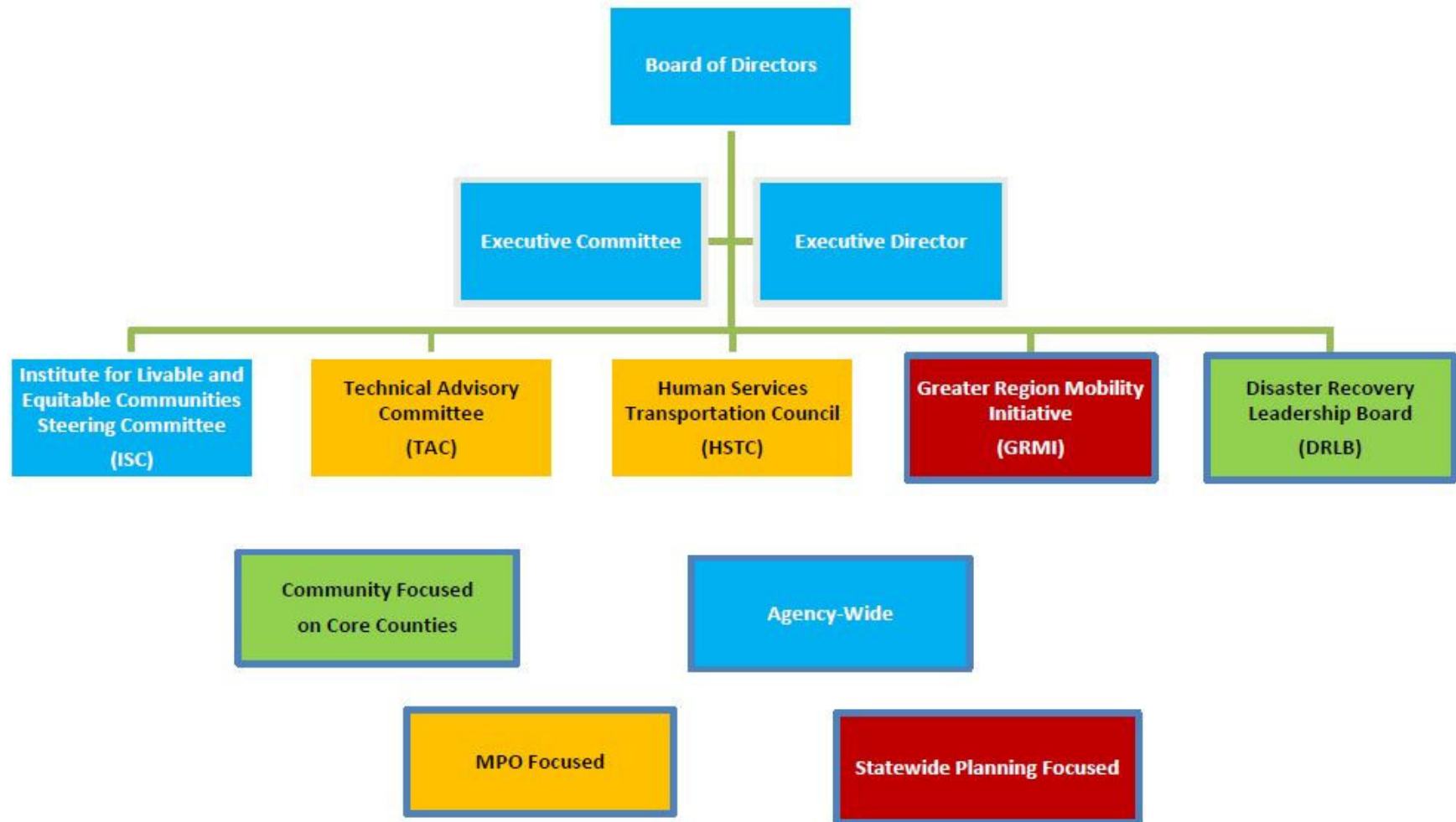
Miami County Park District
Miami County Transit
Montgomery County Engineer
Montgomery County TID
ODOT District 7
ODOT District 8
Sinclair College
South Metro Chamber of Commerce
Troy Area Chamber of Commerce
University of Dayton
Warren County TID
Wright State University
Wright-Patterson Air Force Base

Member Counties

Darke
Greene
Miami
Montgomery
Preble



Agency Committees



MVRPC's Board of Directors

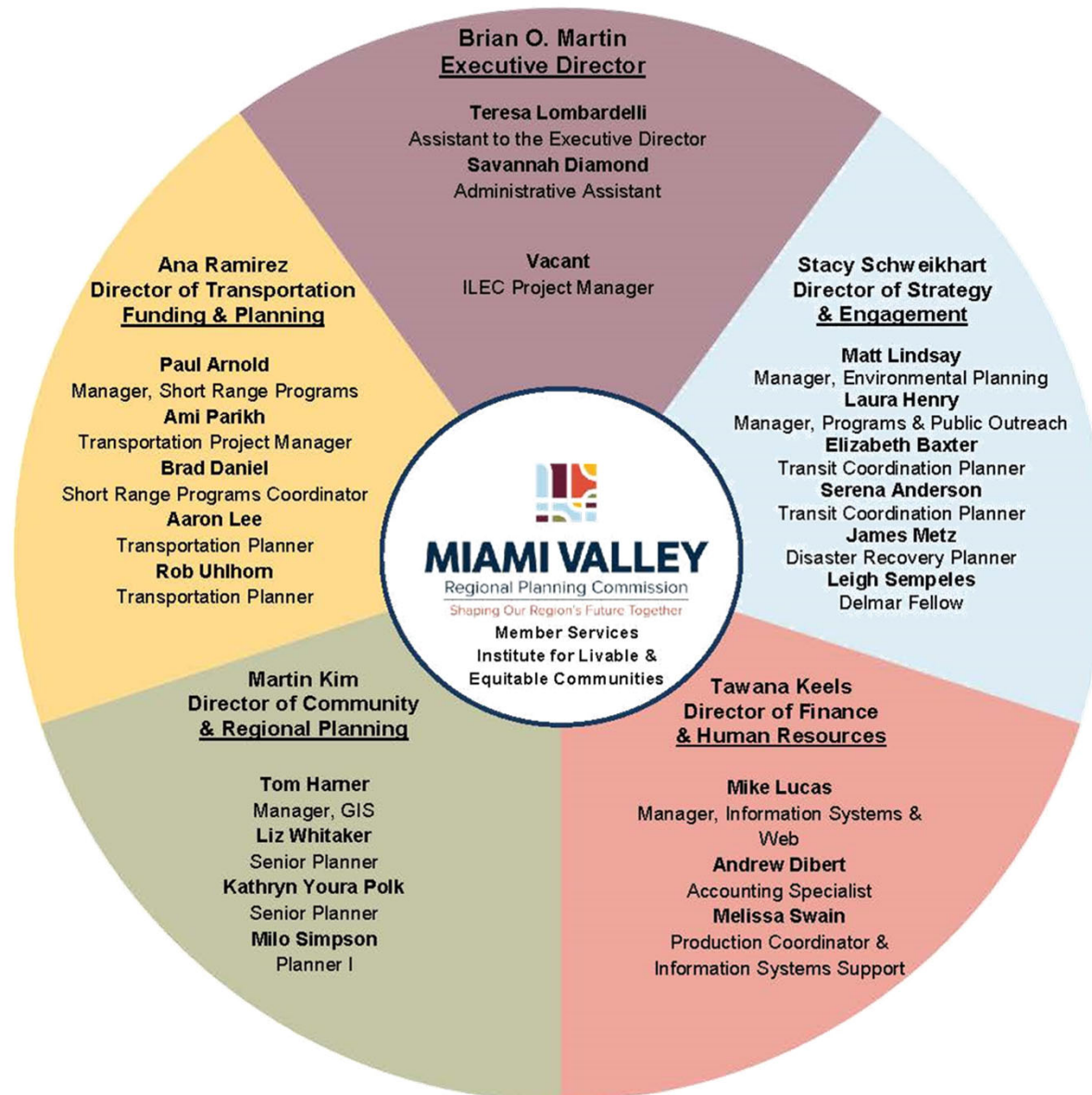
A decision-making body comprised of elected officials of member jurisdictions and others in the Miami Valley, serves as the MPO for the Region



The MVRPC Technical Advisory Committee

- Provides advice to the Board of Directors in regards to:
 - Long and short range plans
 - Programs for financing, staging, detailing, administering and implementing the plans
 - Evaluation, analysis, and recommendations on matters brought to the Board of Directors.







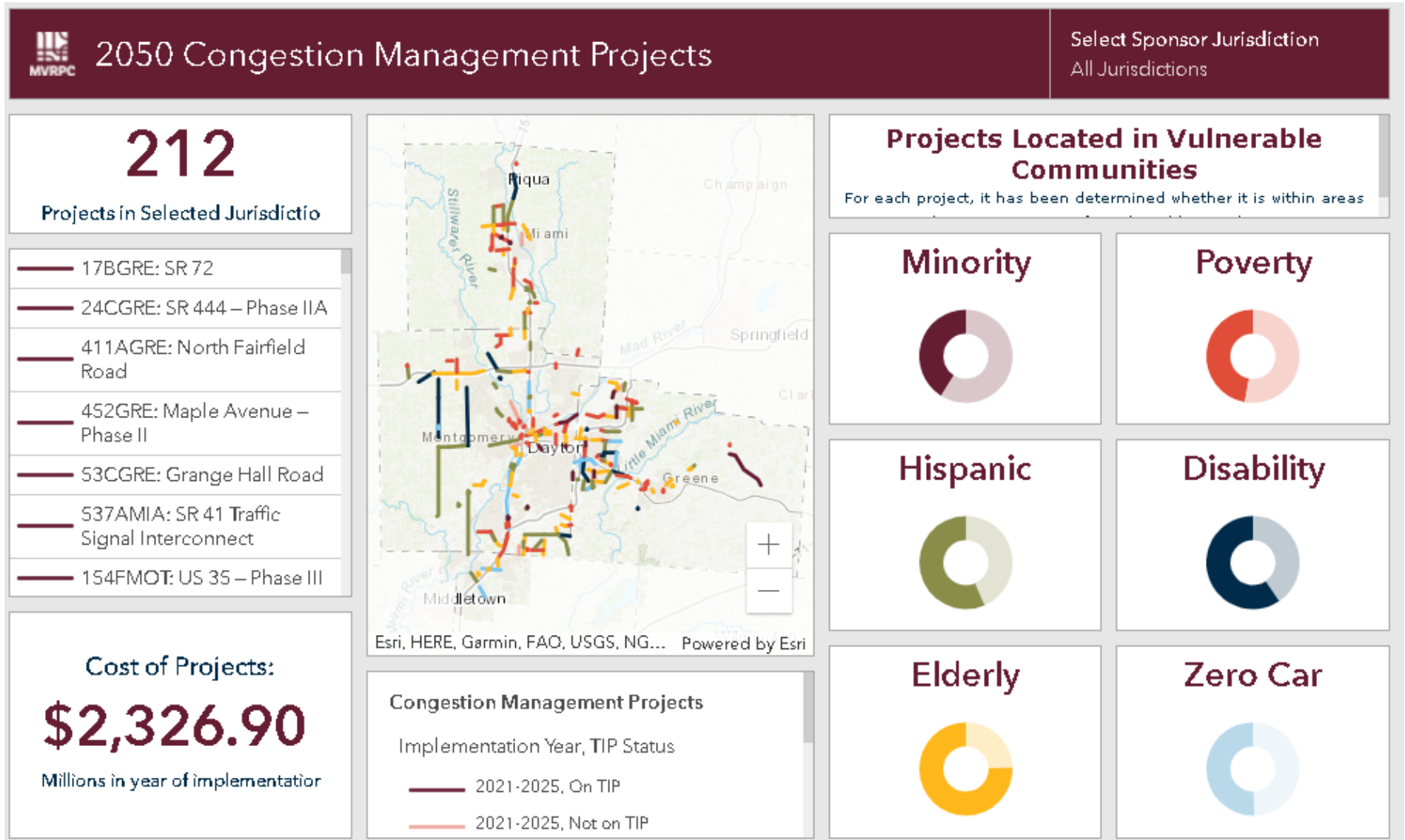
Transportation Planning and Funding

2050 Long Range Transportation Plan

- Updated every five years
- Has a 20+ year horizon
- Includes multi-modal strategies and projects
- Is “fiscally constrained”
- Demonstrates conformance with State Implementation (Air Quality) Plan



Congestion Management Projects Dashboard



Short Range Transportation

Transportation Improvement Program (TIP)

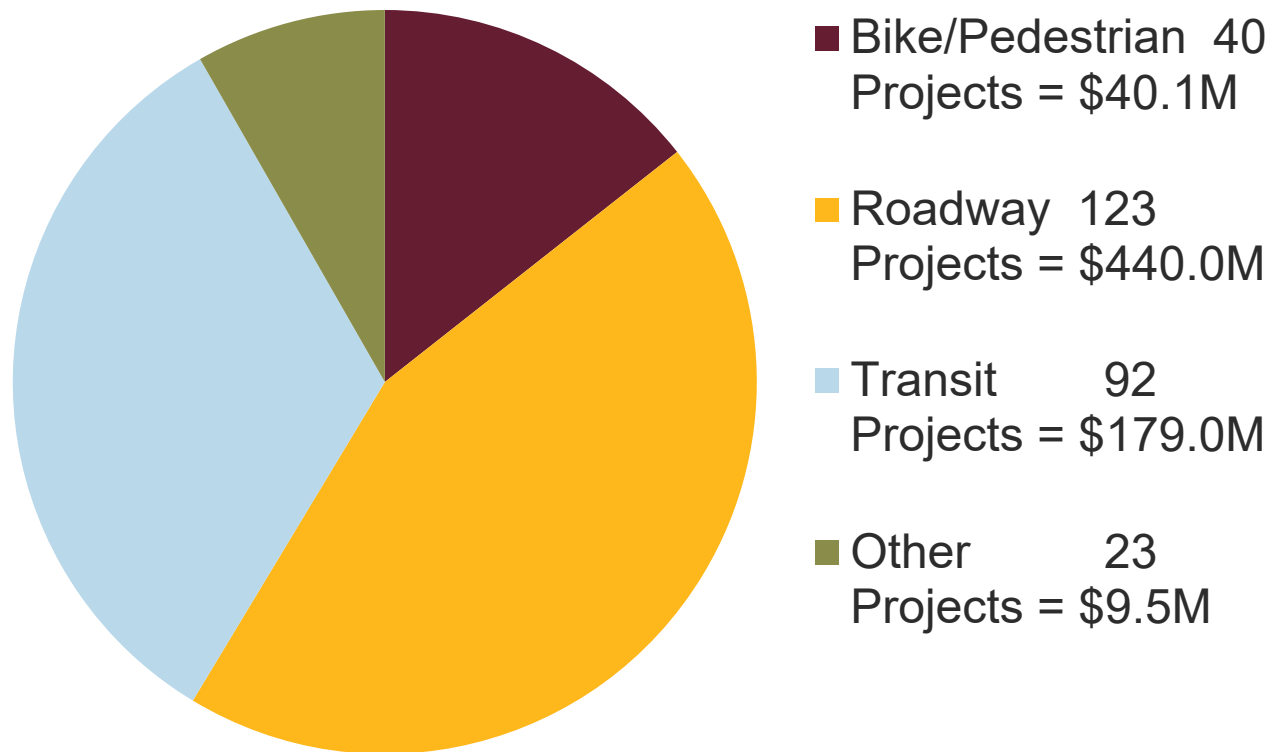
- Project cost and schedule details
- Updated every 2 years
- Amended frequently
- Includes approved projects scheduled for funding over the next 4 years
- The TIP includes the following project types from the LRTP
 - 1. Roadway Projects
 - 2. Bikeways and Pedestrian Projects
 - 3. Transit Projects
 - 4. Travel Demand Management Strategies
 - 5. Operation-Maintenance



Short Range Transportation

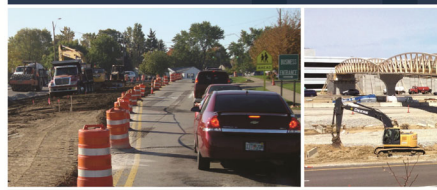
SFY2021-2024 Transportation Improvement Program Projects

The current TIP has 278 projects, totaling \$668.6 million dollars.



Transportation Funding

SURFACE TRANSPORTATION PROGRAM (STP)



The STP program provides flexible funding that may be used by State and local governments for projects to preserve and improve the conditions and performance on any Federal-aid highway, bridge and tunnel projects on any public road, pedestrian and bicycle infrastructure, and transit capital projects, including intercity bus terminals. In the Miami Valley Region, these funds are sub-allocated to MVRPC for project selection. In 2012, MVRPC introduced a Simple Resurfacing Program, which will be used for paving projects that have no right-of-way or environmental needs. The amount of "set aside" for these resurfacing projects will be determined on an annual basis. MVRPC will provide up to 80% (federal) of the project cost, and the applicant provides a minimum of 20% (non-federal) as matching funds.

Eligible Items

- Capital costs for road, bridge and transit projects
- Carpooling, fringe and corridor parking facilities and programs, including electric and natural gas vehicle charging infrastructure, bicycling, and pedestrian uses
- Safety infrastructure improvements and programs
- Research and development and technology transfer programs
- Capital and operating costs for traffic monitoring, management, and control facilities and programs, including advanced truck stop electrification systems
- Transportation alternatives activities
- Transportation control measures
- Development and establishment of management systems

- Highway
- Infrastructure
- System
- Environmental
- Rehabilitation
- Research

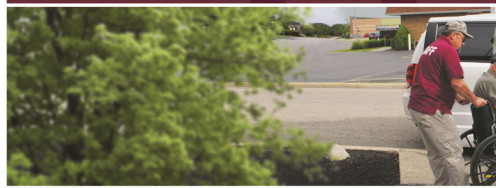
Upon MVRPC staff will be

For a complete list of STP projects, please visit the following link: <http://www.mvrpc.org/program/policiesprocedures>

Annual funding in STP

10 North Ludlow St.
t: 937.223.6323 | f: 937.223.6323

TRANSPORTATION ALTERNATIVES PROGRAM (TA)



The TA program provides funding for projects defined as transportation alternatives, including on and off road pedestrian and bicycle facilities; infrastructure projects for improving non-driver access to public transportation and enhanced mobility; community improvement activities; environmental mitigation; recreational trail program projects; and safe routes to school projects. MVRPC will provide up to 80% (federal) of the project cost, and the applicant provides a minimum of 20% (non-federal) as matching funds.

Eligible Items

- Construction, planning, and design of on-road and off-road trail facilities for pedestrians, and non-motorized forms of transportation
- Construction, planning, and design of infrastructure related projects and systems that will provide safe routes for non-drivers (children, older adults, individuals with disabilities) to access daily needs
- Conversion and use of abandoned railroad corridors for trails for pedestrians, bicyclists, or non-motorized transportation users
- Construction of turnouts, overlooks, and viewing areas
- Community improvement activities
- Inventory, control, or removal of outdoor advertising
- Historic preservation and rehabilitation of historic transportation facilities
- Any environmental mitigation activity
- Address storm water management, control, and water pollution prevention or abatement
- Recreational trail program

- Safe routes to school
- Related projects
- and safe routes to school
- Planning, design, and construction of other roadway and interstate systems

Upon MVRPC staff will be

For a complete list of TA projects, please visit the following link: <http://www.mvrpc.org/program/policiesprocedures>

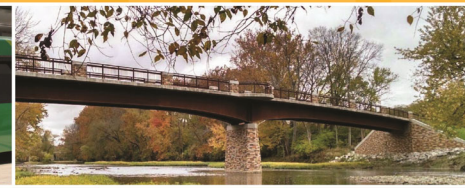
Funding

Annually ODOT sub-allocates TA funds to MVRPC

10 North Ludlow St.
t: 937.223.6323 | f: 937.223.6323

CONGESTION MITIGATION AND AIR QUALITY PROGRAM (CMAQ)

Federal Transportation
Funding Facts



The CMAQ program is continued in Moving Ahead for Progress in the 21st Century Act (MAP-21) to provide a flexible funding source to State and local governments for transportation projects and programs to help meet the requirements of the Clean Air Act. Funding is available to reduce congestion and improve air quality for areas that do not meet the National Ambient Air Quality Standards for ozone, carbon monoxide, or particulate matter (nonattainment areas) and for former nonattainment areas that are now in compliance (maintenance areas). The Ohio Department of Transportation (ODOT) sub-allocates the CMAQ funds to the 8 largest Metropolitan Planning Organizations (MPO) through a Statewide CMAQ Program. In the MVRPC area, CMAQ funds will provide up to 80% (federal) of the project cost, and the applicant provides a minimum of 20% (non-federal) as matching funds.

Application Process

Under the Statewide CMAQ Program, MVRPC will continue to administer the CMAQ application process. The solicitation cycle normally starts and ends in the fall of each year. All project applications must be consistent with the Regional Complete Streets Policy. Upon approval by the Board, MVRPC staff will complete the Statewide CMAQ application process that includes an allowance for regional priority. This priority is based on the ranking of projects as approved by the MVRPC Board. A final funded list from the Ohio Statewide Urban CMAQ Review Committee will typically be approved before the end of the following calendar year and MVRPC staff will notify sponsors of the results.

For a complete list of CMAQ project funding provisions, please visit the following link to review MVRPC's Program Policies and Procedures: <http://www.mvrpc.org/program/policiesprocedures>

Funding

Historically ODOT sub-allocated approximately \$6.0 million per year to MVRPC. The new Statewide CMAQ Program provides approximately \$57 million per year to the 8 large MPOs in Ohio.



10 North Ludlow St., Suite 700 | Dayton, Ohio 45402-1855
t: 937.223.6323 | f: 937.223.9750 | TTY/TDD: 800.750.0750
mvrpc.org





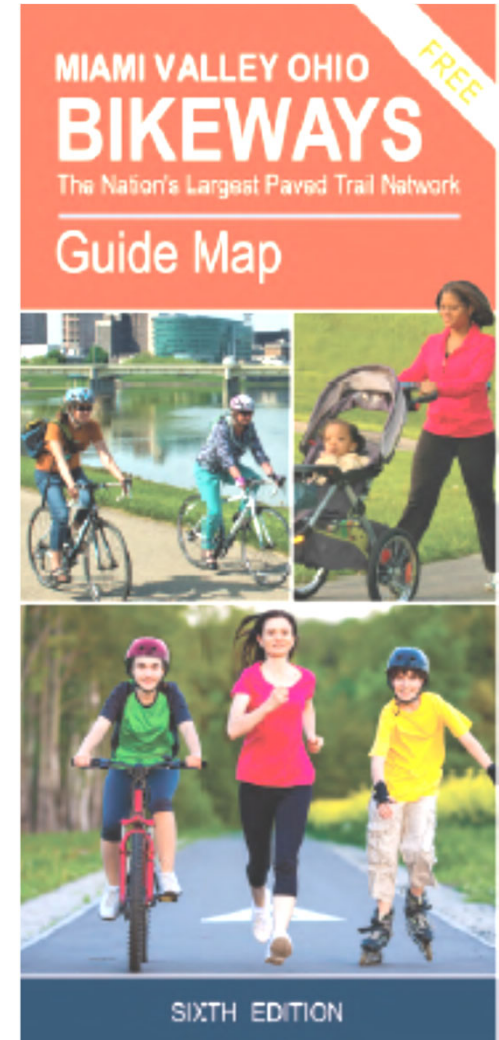
Transit, Rideshare, and Active Transportation Programs

Alternate and Active Transportation Planning



- Promoting ridesharing, vanpooling, bike commuting and use of public transit in order to reduce traffic congestion.
- Advocating and providing technical assistance for the expansion of complete streets and trail infrastructure.
- MiamiValleyTrails.org - A unique Partnership with Trail Managing Agencies and the Travel and Tourism Sector





FTA Section 5310 Program

- Enhances mobility for seniors and individuals with disabilities
- Provides greater access to the community and employment for seniors and people with disabilities
- Miami Valley Region receives an annual allocation of funds
- Managed by MVRPC, Greene, Miami, Montgomery and northern Warren counties
- Human Services Transportation Council (HSTC) establishes goals for coordination among providers and improvements to service
- Greater Region Mobility Initiative (GRMI) extends coordination beyond MPO





Community and Regional Planning

Data Resources

US CENSUS DATA

HOME // DATA & MAPPING // CENSUS DATA CENTER

Web TELUS

Traffic Count Viewer

Project Evaluation System

Geo-Spark

Recreational Assets Map

Economic Base Assessment

Geographic Information Systems (GIS) at MVRPC ↓

Census Data Center ↑

Census 2010 Regional Profile

American Community Survey

Longitudinal Employer-Household Dynamics

2020 Census Resource Page

Data Commons

MVRPC is a Census Affiliate Organization. As such, we provide assistance to U.S. Census Bureau's various programs and maintain Census data for the Region dating from the most recent releases back to 1950. Please contact Elizabeth Whitaker, Senior Planner at 937.223.6323, if you have any Census-related questions, from requests for specific data to help navigating the Census website.

2020 CENSUS

The U.S. Census Bureau is continuing their work on the 2020 Census. Following the enumeration phase, information will be processed to deliver apportionment counts and redistricting data. Due to operational disruptions resulting from the COVID-19 pandemic, the timeline for delivery of 2020 Census data is fluid. For the latest information on the 2020 Census, please visit MVRPC's [2020 Census Resource Page](#).

CENSUS REGIONAL PROFILE

MVRPC staff, using data from the 2010 Census, has put together a [Regional Profile of the Miami Valley](#), along with some basic data for all jurisdictions in the region and individual profile sheets for eight counties.

The Census Bureau's American Community Survey (ACS) is an ongoing survey which provides data every year about things like income, education, veteran status, and transportation. MVRPC staff has put together a Regional Profile using data from the American Community Survey (ACS) 5-year estimates. Please visit the [ACS introduction](#) page before accessing the American Community Survey Regional Profile.

The Census Bureau, in partnership with other federal and state agencies, produces [Longitudinal Employer-Household Dynamics](#) data on employment and where employees live. MVRPC has used this data to prepare a

Miami Valley Geo-Spark

mvrpc.org

Welcome to the Miami Valley **Geo-Spark**, the place to find geographic data for the Miami Valley Region.

The "Geo-Spark" is the Miami Valley's central location for open data and interactive maps. Through this site, you can visualize regional data in map galleries or access GIS Open Data layers & maps.

Explore our Open Data



Browse GIS open data and maps for the Miami Valley.

Click a button below to view specific data types and web maps, or click the button to the left to access all of the data. You can use these same categories when searching for maps in the galleries below.

ArcGIS Online user? Check out our [Regional Resources](#) group for additional opportunities to share information.



HOME // DATA & MAPPING // DATA COMMONS

- Web TELUS
- Traffic Count Viewer
- Project Evaluation System
- Geo-Spark
- Recreational Assets Map
- Economic Base Assessment
- Geographic Information Systems (GIS) at MVRPC ↓
- Census Data Center ↓
- Data Commons ↑

MIAMI VALLEY DATA COMMONS

The Miami Valley Data Commons provides data on a number of different topics at the county level for Darke, Greene, Miami, Montgomery, Preble, and Warren counties. The topics correspond with those found in the [Regional Profile](#):

- Key Demographics
- Arts and Culture
- Business and Industry
- Diversity
- Environmental Quality
- Housing
- Recreational Open Space
- Transportation
- Vacancy
- Workforce

Additional information, such as the Census Data Regional Profile and Longitudinal Employer-Household Dynamics, can be found on the [Census Resource Page](#). For an Excel file containing all raw data for each county and to navigate to each county page, please use the following navigation tool.

County	Interactive Dashboard	Raw Data Excel File
Darke	Launch	Download
Greene	Launch	Download
Miami	Launch	Download
Montgomery	Launch	Download
Preble	Launch	Download
Warren	Launch	Download

Key Demographics Arts and Culture **Business and Industry** Diversity Envrioner

Business and Industry

Montgomery County

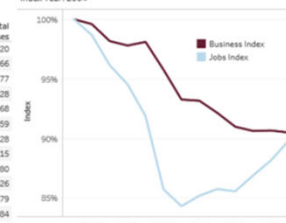
Total Jobs and Businesses

Source: EMSI

	Total Jobs	Total Businesses
2004	295,649	13,220
2005	291,737	13,166
2006	284,238	12,977
2007	279,458	12,928
2008	271,579	12,968
2009	253,390	12,659
2010	249,214	12,328
2011	251,810	12,315
2012	253,459	12,180
2013	252,918	12,026
2014	256,860	11,979
2015	260,619	11,984
2016	265,563	11,961

Business and Jobs Indexes

Source: EMSI
Index Year: 2004





Institute for Livable and Equitable Communities

Institute for Livable and Equitable Communities

Vision:

The Institute places an intentional focus on livability and equity, launching programs and transforming systems that create a community where all people can thrive.

Mission:

The Institute for Livable & Equitable Communities at the Miami Valley Regional Planning Commission (MVRPC) convenes critical partners and is the central point of coordination for a long-term, multi-faceted effort to address nine domains proven to enhance livability and equity in communities.



Institute for Livable and Equitable Communities

INSTITUTE STEERING COMMITTEE

REGIONAL EQUITY INITIATIVE

REGIONAL EQUITY INITIATIVE
SUB-COMMITTEE

RACIAL EQUITY TASK FORCE

NEEDS OF
UNDERSERVED
COMMUNITIES
& STRATEGIC,
INTENTIONAL
ENGAGEMENT

LIVABLE COMMUNITIES INITIATIVE

REGIONAL LIVABLE COMMUNITIES
SUB-COMMITTEE

MIAMI VALLEY AGE-FRIENDLY
COMMUNITIES NETWORK

INSTITUTE DOMAINS

ALWAYS APPROACHED USING THE LENS OF IMPROVING BOTH LIVABILITY AND EQUITY



EDUCATION



ENTREPRENEURSHIP,
EMPLOYMENT &
VOLUNTEERING



ENGAGEMENT



HEALTH &
ENVIRONMENT



HOUSING



NEIGHBORHOOD



SAFETY &
JUSTICE



TECHNOLOGY &
CONNECTIVITY



TRANSPORTATION



If it is Equitable, it is also Livable

**Plan cities
and mobility
together**



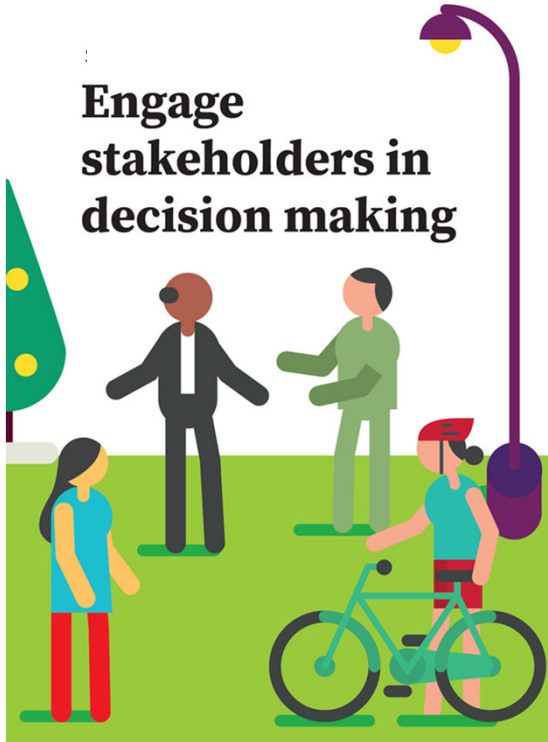
**Focus on
moving people,
not vehicles**



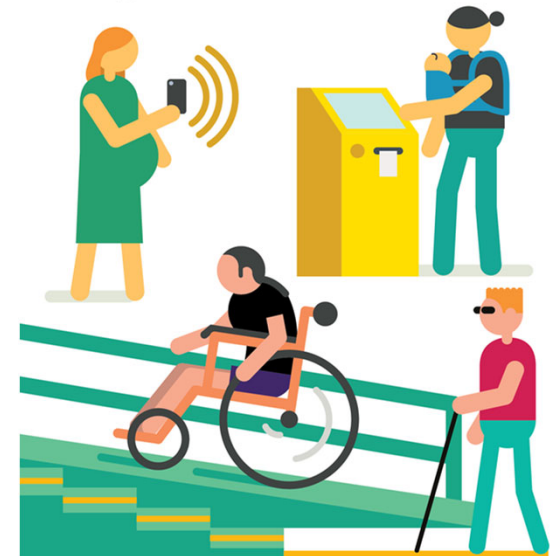
**Encourage
efficient use of
space and assets**



**Engage
stakeholders in
decision making**



**Design for
equitable access**





MVRPC and you: Shaping Our Region's Future Together Questions?

MIAMI VALLEY
Regional Planning Commission

NEWS & EVENTS | ABOUT | CONTACT | Committee Center | ENGLISH | ESPAÑOL | SEARCH

TRANSPORTATION | REGIONAL PLANNING | ENVIRONMENT | REGIONAL INITIATIVES | DATA & MAPPING | OUR MEMBERS | OUR VISION

SHAPING OUR REGION'S FUTURE TOGETHER

LEARN MORE

MVRPC Strategic Plan

View | Edit | Translate | Revisions | Clone this basic page

NEWS + VIEW ALL

Virtual Public Participation Meeting to be held regarding the Final DRAFT 2050 Long Range Transportation Plan
Date/Time: March 24, 2021
The meeting will take place via Zoom, a video conferencing platform, and will be held as follows:
Wednesday, April 14, 2021 – 5:00 p.m. – 6:00 p.m.

MVRPC Announces Members Elected to 2021-2022 Executive Committee
Date/Time: March 05, 2021

CALENDAR OF EVENTS

MARCH 2021

S	M	T	W	T	F	S
		1	2	3	4	5
7	8	9	10	11	12	13
14	15	16	17	18	19	20
21	22	23	24	25	26	27
28	29	30	31			

EXECUTIVE DIRECTOR'S UPDATE FROM BRIAN O. MARTIN, AICP

MIAMI VALLEY
Regional Planning Commission

State & Federal
Transportation Funding Update

UPCOMING EVENTS

Brian O. Martin, MVRPC

bmartin@mvrpc.org

Frank Burkett, FHWA

Frank.Burkett@dot.gov

Mark Kane, FTA

Mark.Kane@dot.gov

**Comment Period ends
September 17, 2021**

