

FIRST & LAST MILE CONNECTIONS

Serena Anderson

Regional Transit Programs Manager

The Toughest Mile in Transit

“First and Last Mile” is a term often used to describe the difficulty people may be experiencing getting to and from public transportation




Why is it important?



A. D. A.

THE AMERICANS WITH DISABILITIES ACT

*"To Boldly Go Where
Everyone Else Has Gone Before"*

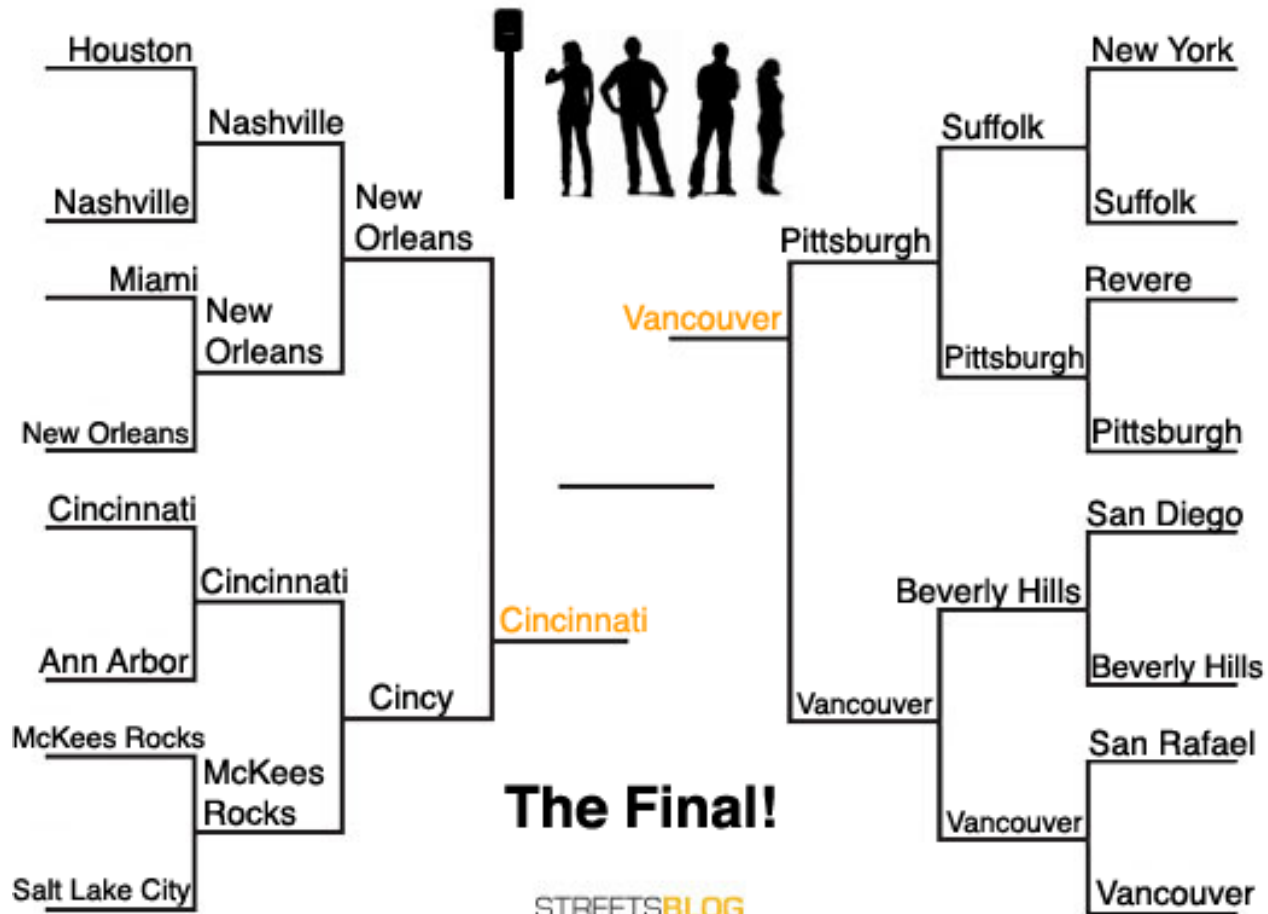


Why is it important?





America's Sorriest Bus Stop





What may create barriers?

- Incomplete, unsafe or inaccessible sidewalks, crossings or bus stops
- Lack of shelter or seating
- Maintenance & snow removal of sidewalks, crossings or bus stops
- Obstructing objects such as dockless scooters, planters, etc.
- Etc.



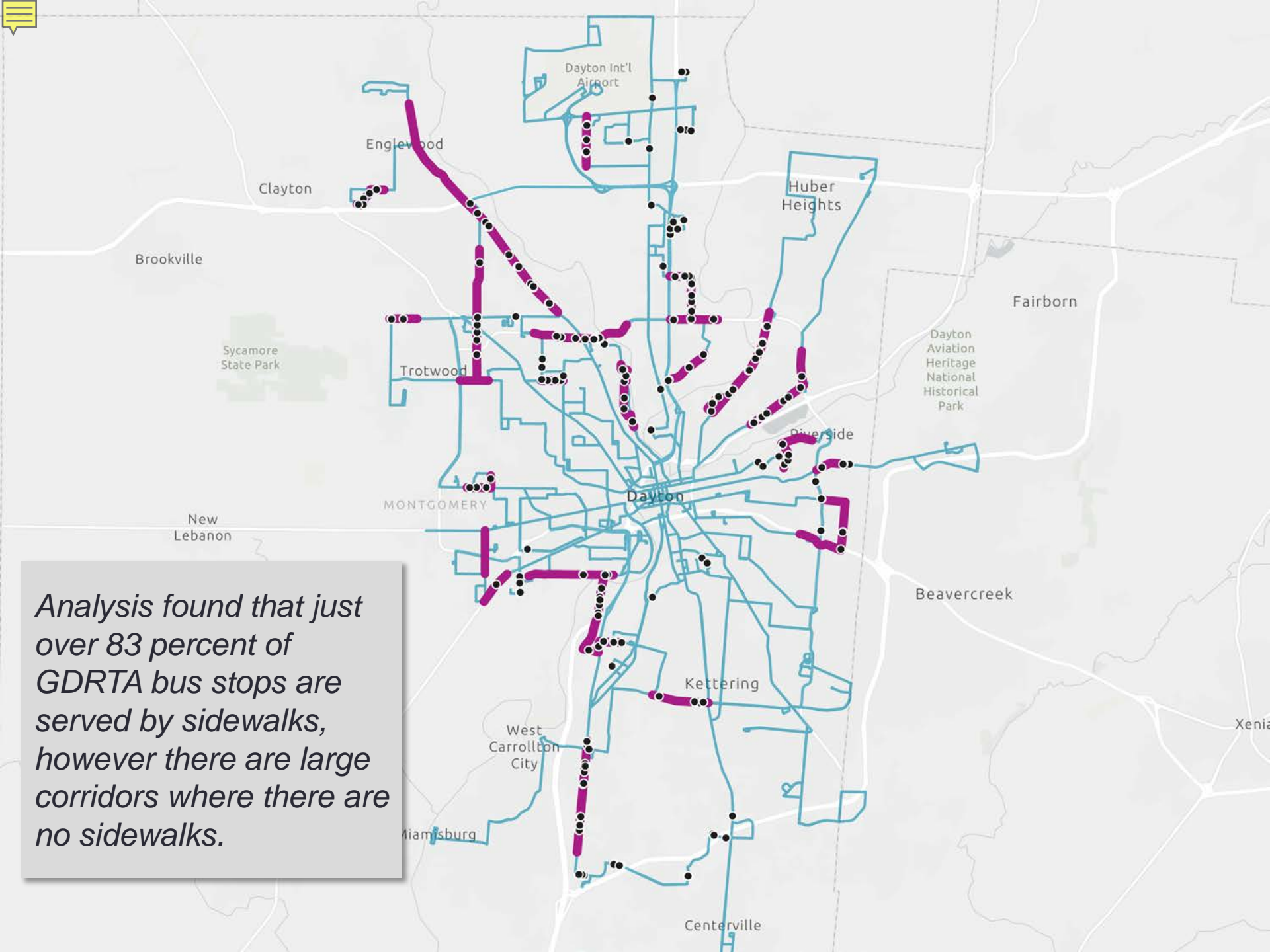
Transportation Challenges for Ohioans with Disabilities Study:

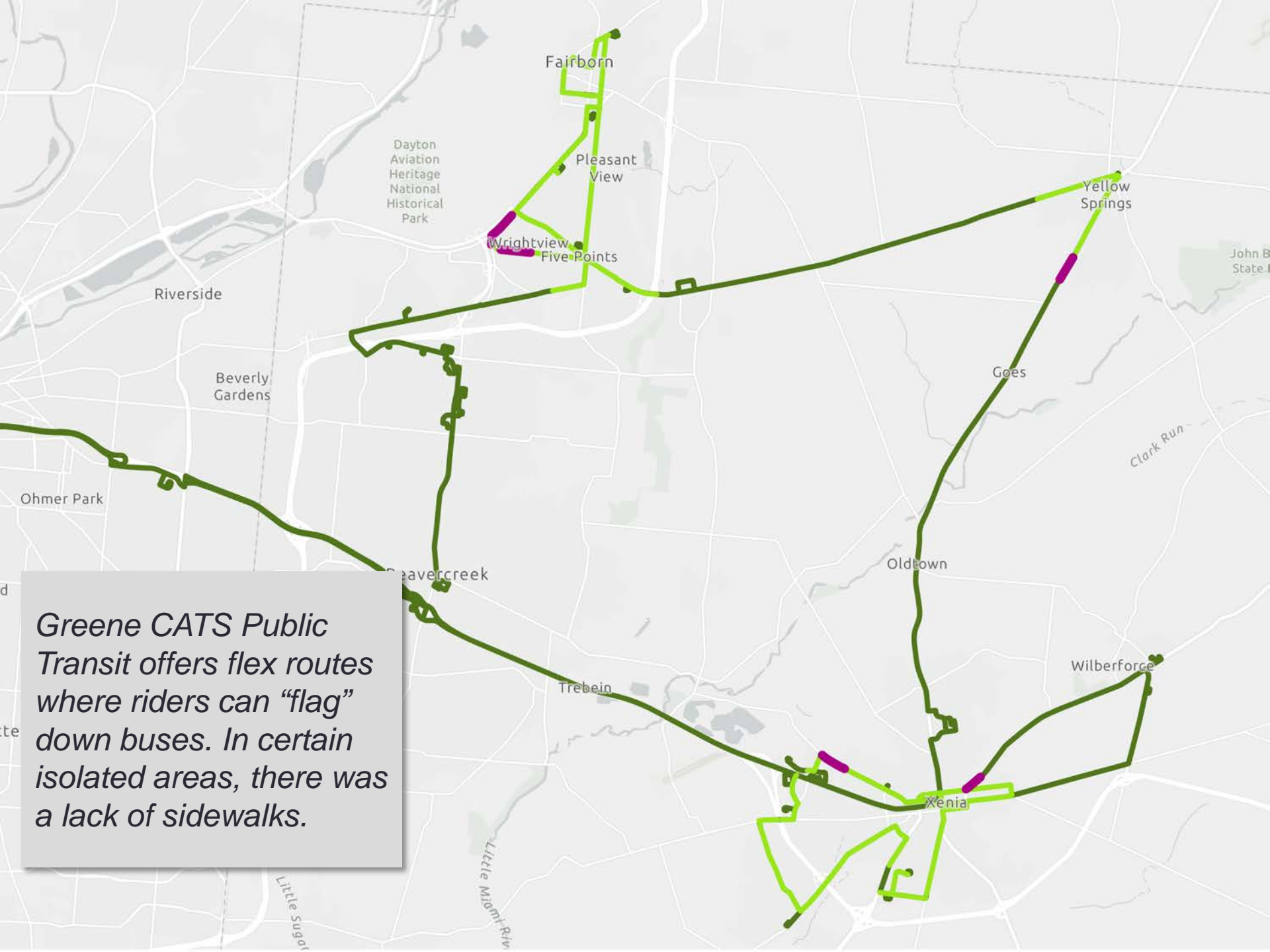
48% stated they felt unsafe at least some of the time when crossing streets or in traffic when trying to access public transportation





Analysis found that just over 83 percent of GDRTA bus stops are served by sidewalks, however there are large corridors where there are no sidewalks.





Greene CATS Public Transit offers flex routes where riders can “flag” down buses. In certain isolated areas, there was a lack of sidewalks.



Section 5310

“To improve mobility for seniors and individuals with disabilities throughout the country by removing barriers to transportation services and expanding the transportation mobility options available.”



**Federal Transit
Administration**