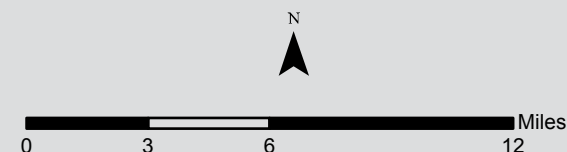
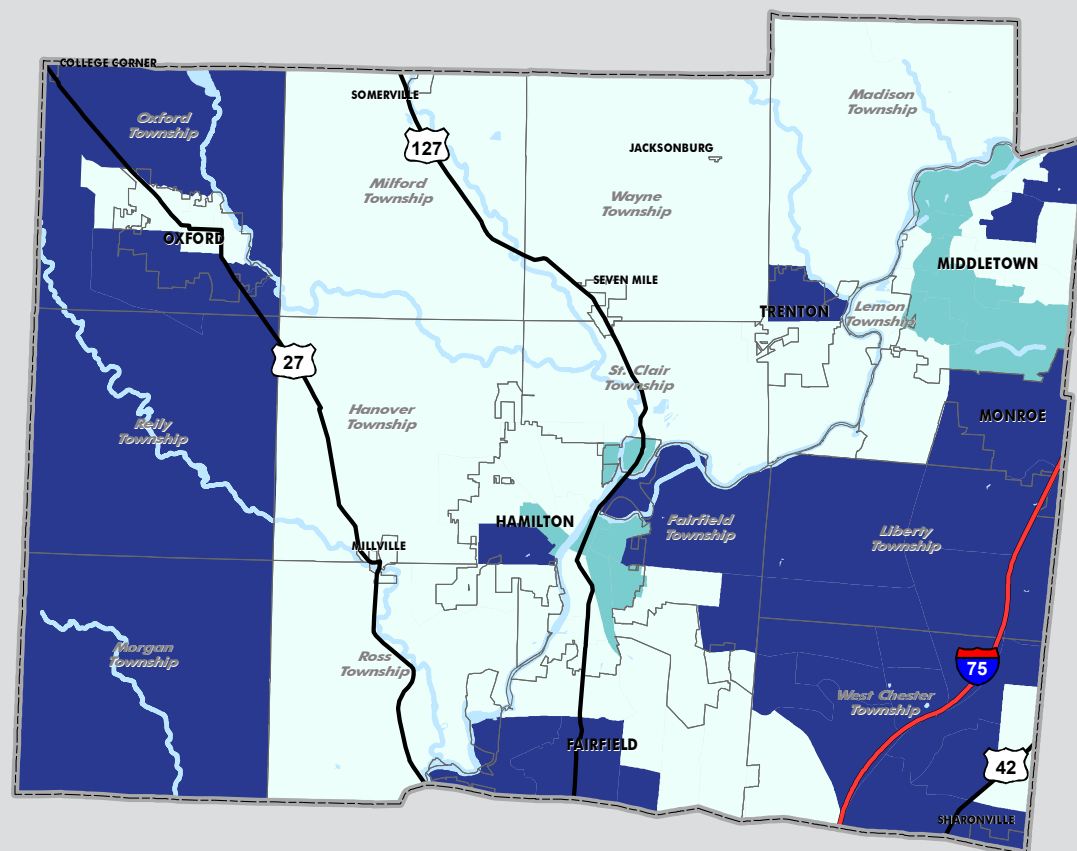


# 2006-2010 American Community Survey: Butler County

## Educational Attainment by Census Tract—High School Diploma or Higher

### Estimated Percent of Population 25 Years and Over With High School Diploma or Higher

- above county average
- not significantly different from county average (85.0%  $\pm$  0.1%)
- below county average



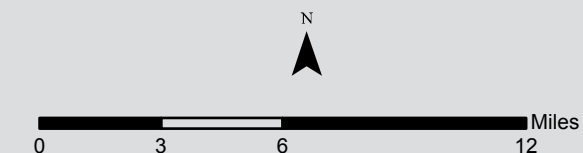
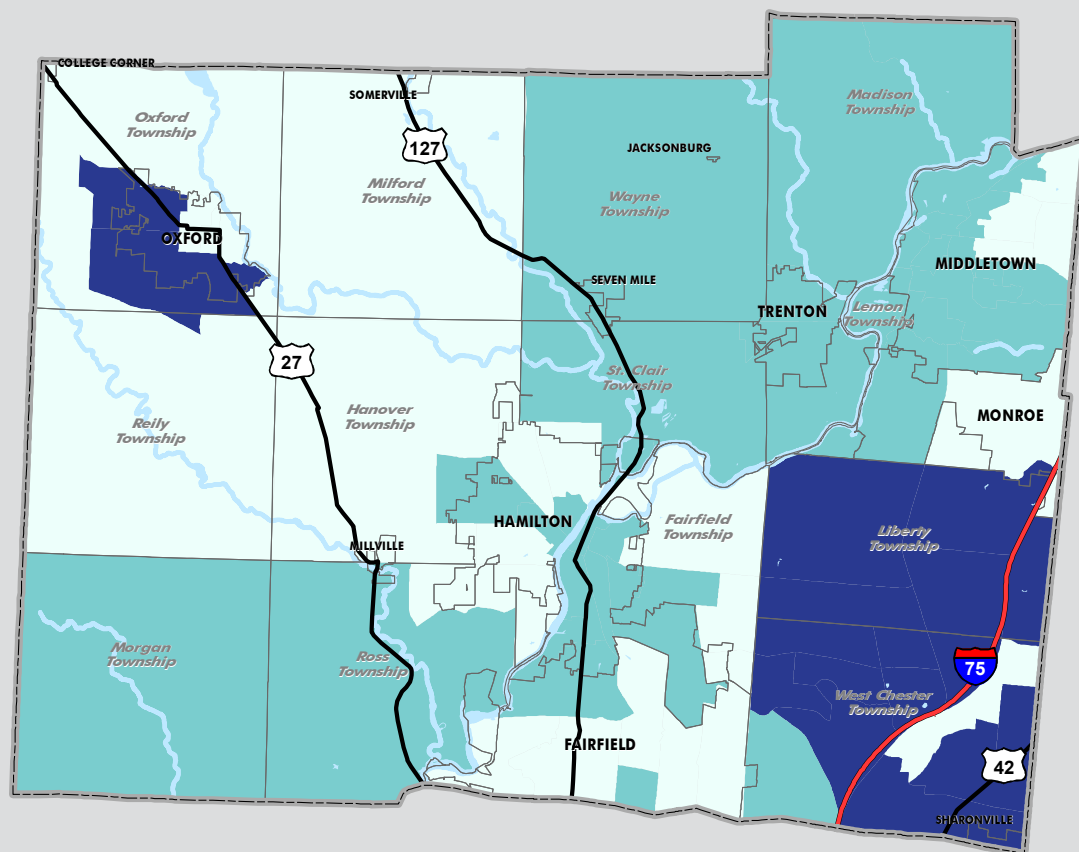
Statistics produced for American Community Survey and included in ACS tables are survey-based estimates and are subject to error. The errors derive from research design (including instrument bias, data frame, and sampling), the survey data collection (non-response bias and response errors), and processing by the Census Bureau (data coding, compilation processes, and case weighting), as well as statistical inference error and uncertainty (which are related to sample size and variance within the measured attributes). US Census Bureau's report on 'Accuracy of the Data' can be found at [http://www.census.gov/acs/www/data\\_documentation/documentation\\_main/](http://www.census.gov/acs/www/data_documentation/documentation_main/)

# 2006-2010 American Community Survey: Butler County

## Educational Attainment by Census Tract—Bachelor's Degree or Higher

### Estimated Percent of Population 25 Years and Over With Bachelor's Degree or Higher

- above county average
- not significantly different from county average (27.9% ± 0.1%)
- below county average



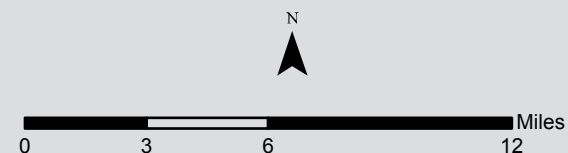
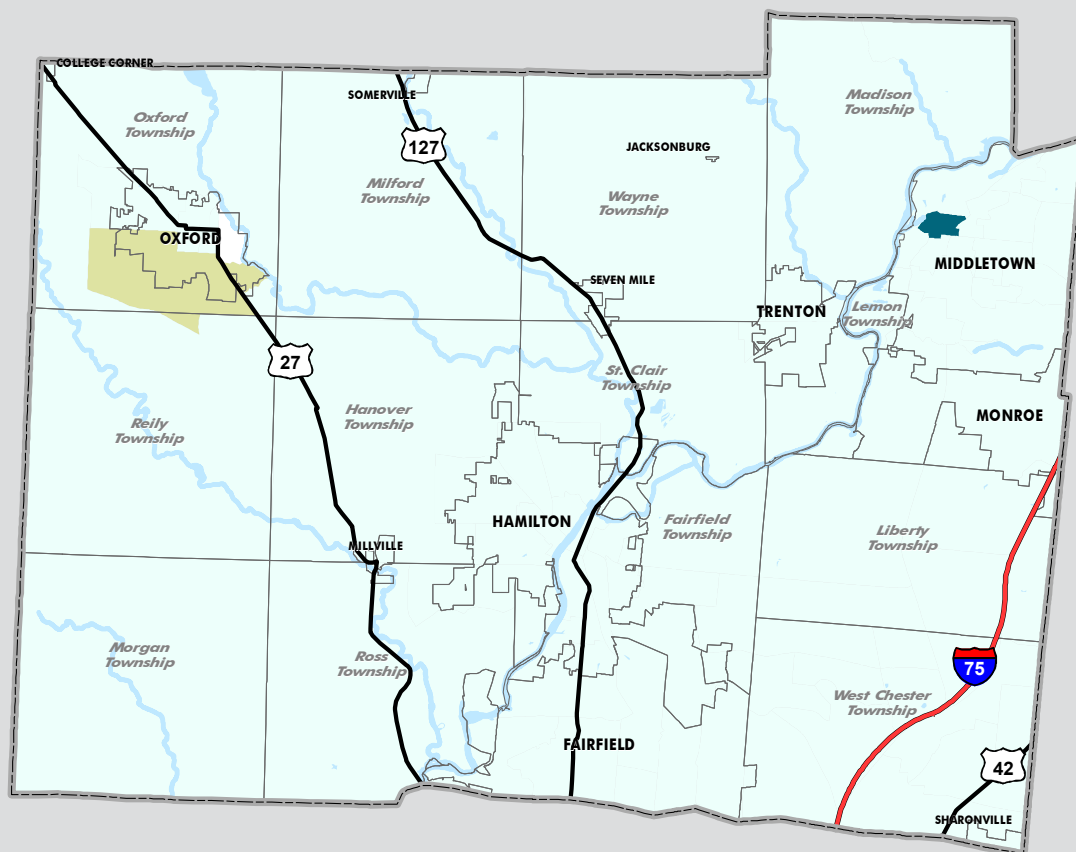
Statistics produced for American Community Survey and included in ACS tables are survey-based estimates and are subject to error. The errors derive from research design (including instrument bias, data frame, and sampling), the survey data collection (non-response bias and response errors), and processing by the Census Bureau (data coding, compilation processes, and case weighting), as well as statistical inference error and uncertainty (which are related to sample size and variance within the measured attributes). US Census Bureau's report on 'Accuracy of the Data' can be found at [http://www.census.gov/acs/www/data\\_documentation/documentation\\_main/](http://www.census.gov/acs/www/data_documentation/documentation_main/)

# 2006-2010 American Community Survey: Butler County

## Cost-Burdened Homeowners by Census Tract

### Estimated Percent of Owner Households That Are Cost-Burdened

- no homeowners
- above county average
- not significantly different from county average (25.4%  $\pm$  1.0%)
- below county average



Cost-burdened households are defined as households that pay 30% or more of their household income on housing costs (selected monthly owner costs for owner-occupied housing and gross rent for renter-occupied housing).

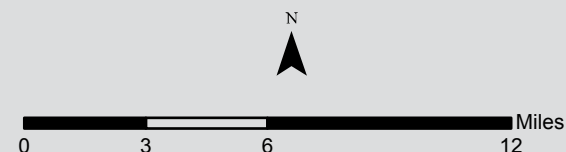
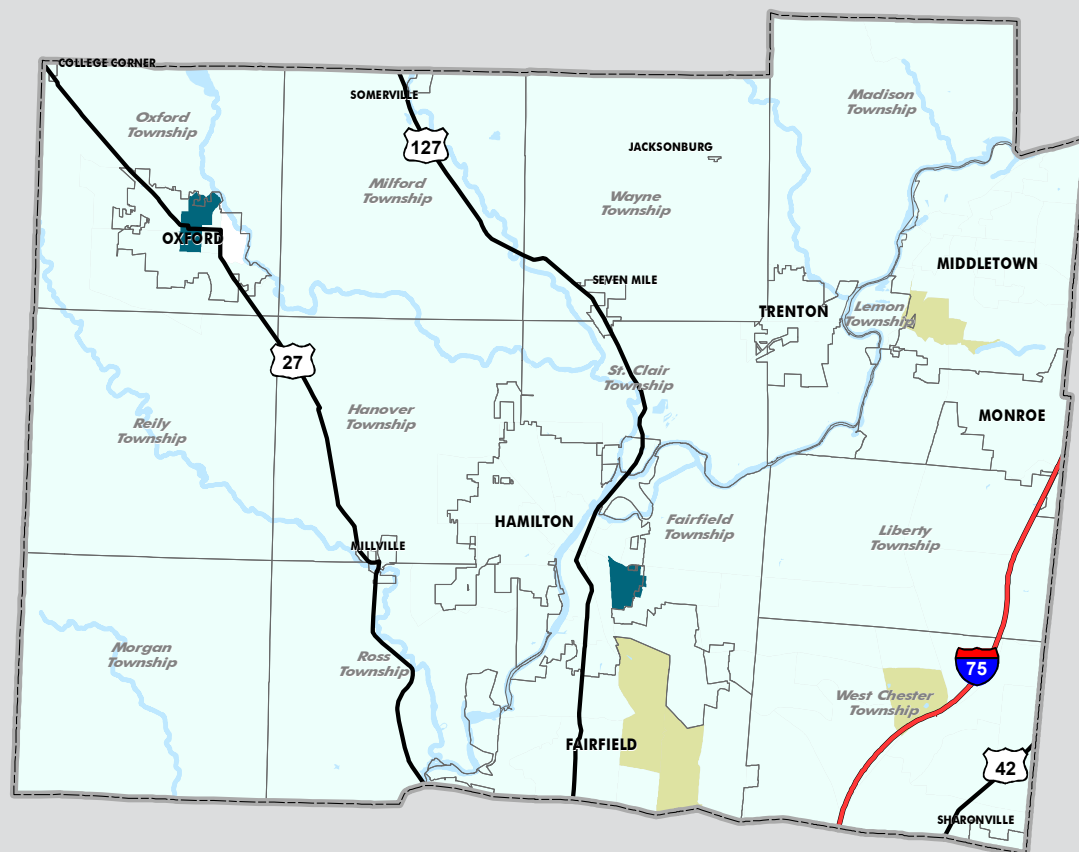
Statistics produced for American Community Survey and included in ACS tables are survey-based estimates and are subject to error. The errors derive from research design (including instrument bias, data frame, and sampling), the survey data collection (non-response bias and response errors), and processing by the Census Bureau (data coding, compilation processes, and case weighting), as well as statistical inference error and uncertainty (which are related to sample size and variance within the measured attributes). US Census Bureau's report on 'Accuracy of the Data' can be found at [http://www.census.gov/acs/www/data\\_documentation/documentation\\_main/](http://www.census.gov/acs/www/data_documentation/documentation_main/)

# 2006-2010 American Community Survey: Butler County

## Cost-Burdened Home Renters by Census Tract

### Estimated Percent of Renter Households That Are Cost-Burdened

- no renters
- above county average
- not significantly different from county average (52.3%  $\pm$  1.9%)
- below county average



Cost-burdened households are defined as households that pay 30% or more of their household income on housing costs (selected monthly owner costs for owner-occupied housing and gross rent for renter-occupied housing).

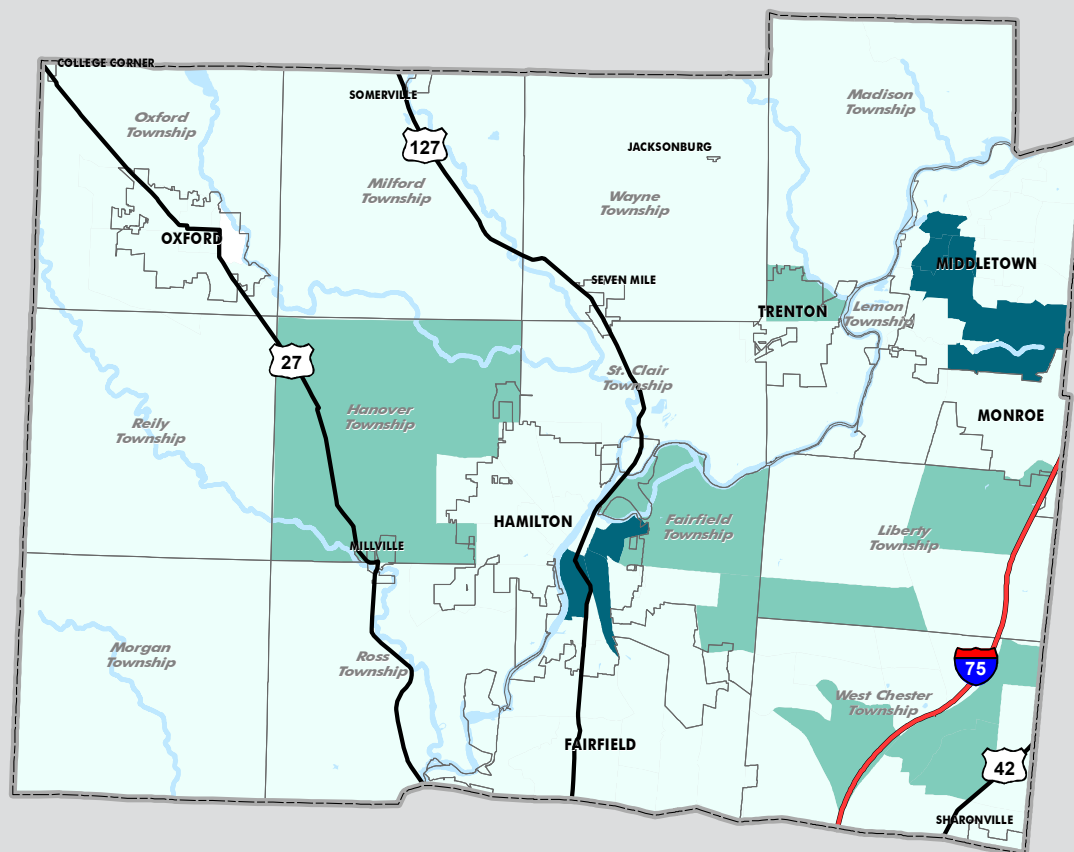
Statistics produced for American Community Survey and included in ACS tables are survey-based estimates and are subject to error. The errors derive from research design (including instrument bias, data frame, and sampling), the survey data collection (non-response bias and response errors), and processing by the Census Bureau (data coding, compilation processes, and case weighting), as well as statistical inference error and uncertainty (which are related to sample size and variance within the measured attributes). US Census Bureau's report on 'Accuracy of the Data' can be found at [http://www.census.gov/acs/www/data\\_documentation/documentation\\_main/](http://www.census.gov/acs/www/data_documentation/documentation_main/)

# 2006-2010 American Community Survey: Butler County

## Housing Vacancy by Census Tract

### Estimated Housing Vacancy Rate

- no housing units
- above county average
- not significantly different from county average (8.5%  $\pm$  0.7%)
- below county average



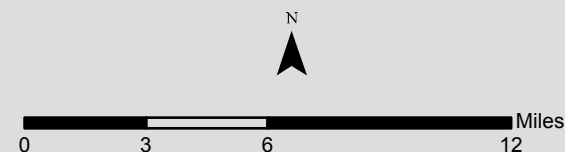
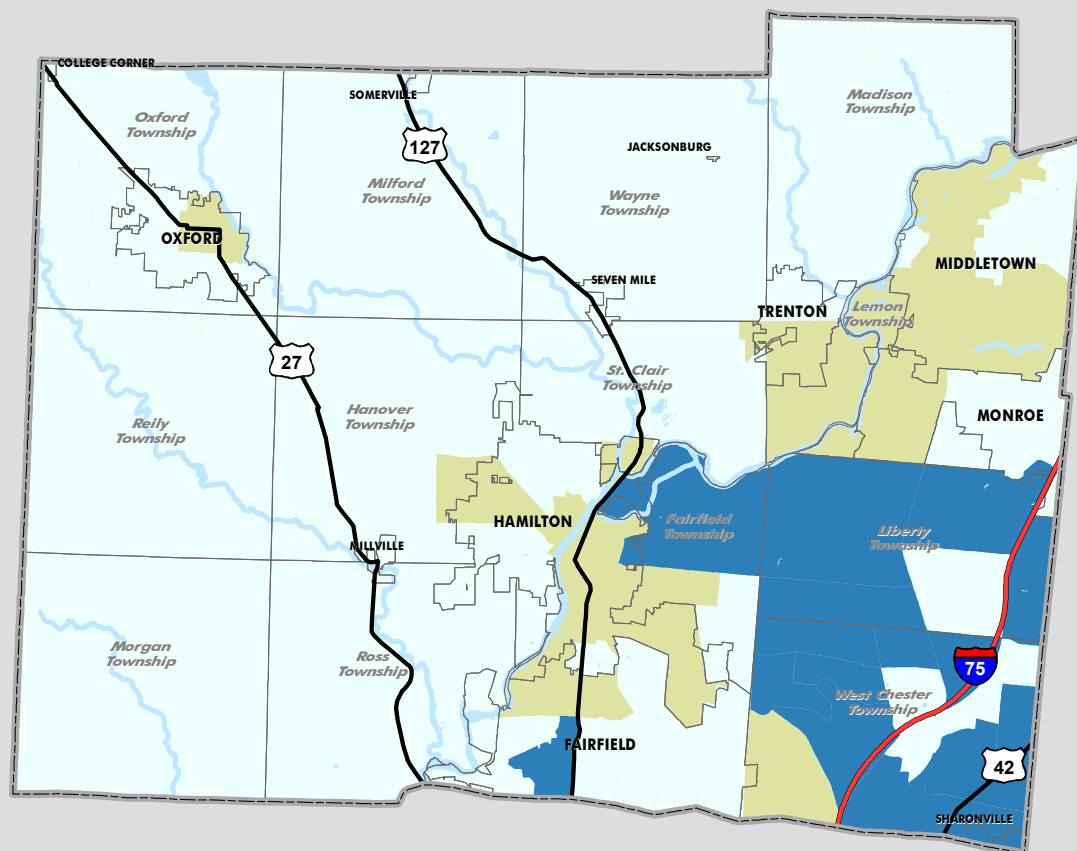
Statistics produced for American Community Survey and included in ACS tables are survey-based estimates and are subject to error. The errors derive from research design (including instrument bias, data frame, and sampling), the survey data collection (non-response bias and response errors), and processing by the Census Bureau (data coding, compilation processes, and case weighting), as well as statistical inference error and uncertainty (which are related to sample size and variance within the measured attributes). US Census Bureau's report on 'Accuracy of the Data' can be found at [http://www.census.gov/acs/www/data\\_documentation/documentation\\_main/](http://www.census.gov/acs/www/data_documentation/documentation_main/)

# 2006-2010 American Community Survey: Butler County

## Per Capita Income by Census Tract

**Estimated Per Capita Income in the Past 12 Months  
(in 2010 Inflation-Adjusted Dollars)**

- above county average
- not significantly different from county average (\$25,892  $\pm$  \$365)
- below county average



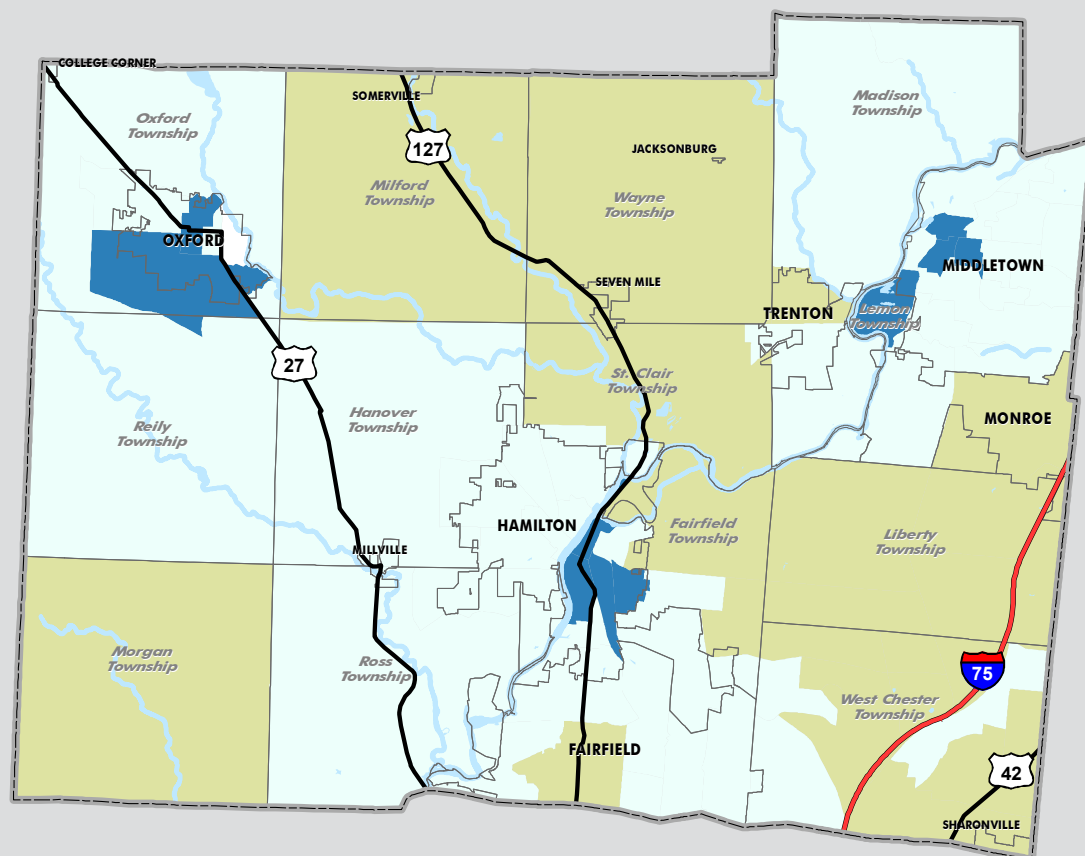
Statistics produced for American Community Survey and included in ACS tables are survey-based estimates and are subject to error. The errors derive from research design (including instrument bias, data frame, and sampling), the survey data collection (non-response bias and response errors), and processing by the Census Bureau (data coding, compilation processes, and case weighting), as well as statistical inference error and uncertainty (which are related to sample size and variance within the measured attributes). US Census Bureau's report on 'Accuracy of the Data' can be found at [http://www.census.gov/acs/www/data\\_documentation/documentation\\_main/](http://www.census.gov/acs/www/data_documentation/documentation_main/)

# 2006-2010 American Community Survey: Butler County

## Population in Poverty by Census Tract

### Estimated Percent of Population in Poverty in the Last 12 Months

- no population for which poverty rate is calculated
- above county average
- not significantly different from county average (12.8%  $\pm$  0.6%)
- below county average

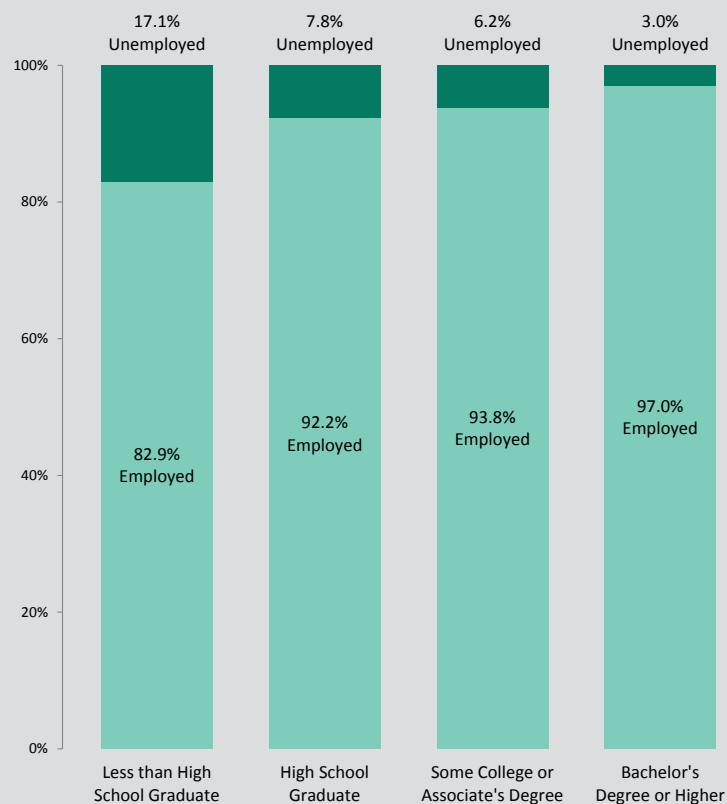


The Census Bureau uses a set of poverty thresholds to determine who is in poverty. These thresholds vary based on several factors and are set and applied separately to two groups: families and people living alone or with nonrelatives (unrelated individuals). For families, the thresholds vary based on family size and composition. For two-person families, the thresholds also vary based on the age of the householder. If a family's total income is less than the corresponding threshold, then that family, and every individual in it, is considered to be in poverty. Poverty thresholds for people living alone or with nonrelatives vary based on age. For a person in this category, if his or her income alone falls below the corresponding threshold, he or she is considered to be in poverty.

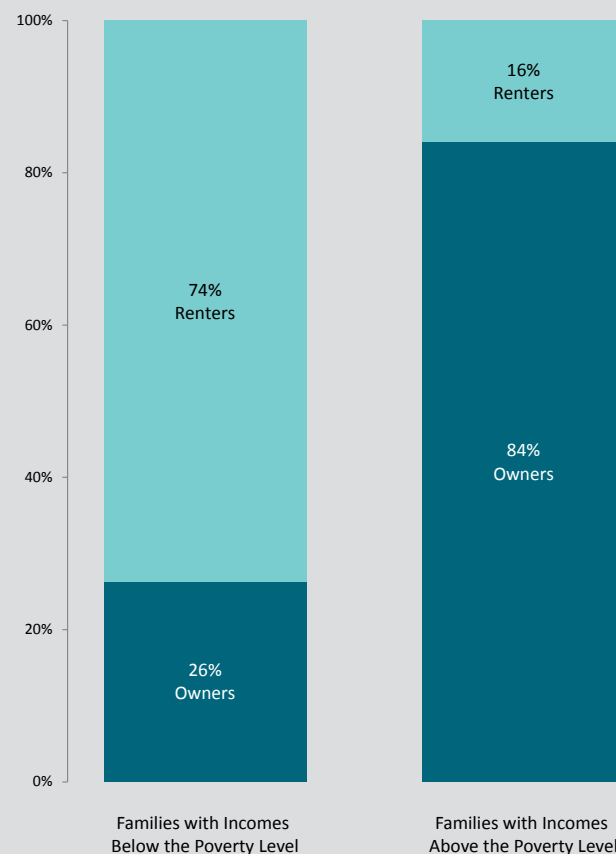
Statistics produced for American Community Survey and included in ACS tables are survey-based estimates and are subject to error. The errors derive from research design (including instrument bias, data frame, and sampling), the survey data collection (non-response bias and response errors), and processing by the Census Bureau (data coding, compilation processes, and case weighting), as well as statistical inference error and uncertainty (which are related to sample size and variance within the measured attributes). US Census Bureau's report on 'Accuracy of the Data' can be found at [http://www.census.gov/acs/www/data\\_documentation/documentation\\_main/](http://www.census.gov/acs/www/data_documentation/documentation_main/)

# 2006-2010 American Community Survey: Butler County

Employment Status by Educational Attainment for the  
Population 25 to 64 Years  
Universe: Population 25 to 64 Years



Housing Tenure by Poverty Status in the Past 12 Months of Families  
Universe: Families

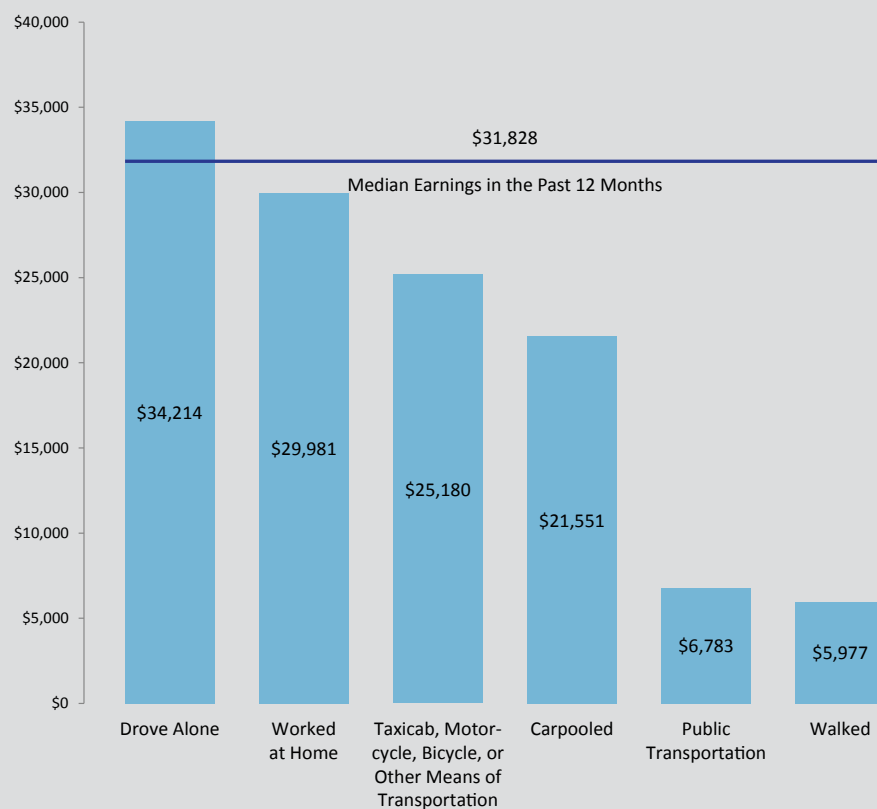


Statistics produced for American Community Survey and included in ACS tables are survey-based estimates and are subject to error. The errors derive from research design (including instrument bias, data frame, and sampling), the survey data collection (non-response bias and response errors), and processing by the Census Bureau (data coding, compilation processes, and case weighting), as well as statistical inference error and uncertainty (which are related to sample size and variance within the measured attributes). US Census Bureau's report on 'Accuracy of the Data' can be found at [http://www.census.gov/acs/www/data\\_documentation/documentation\\_main/](http://www.census.gov/acs/www/data_documentation/documentation_main/)

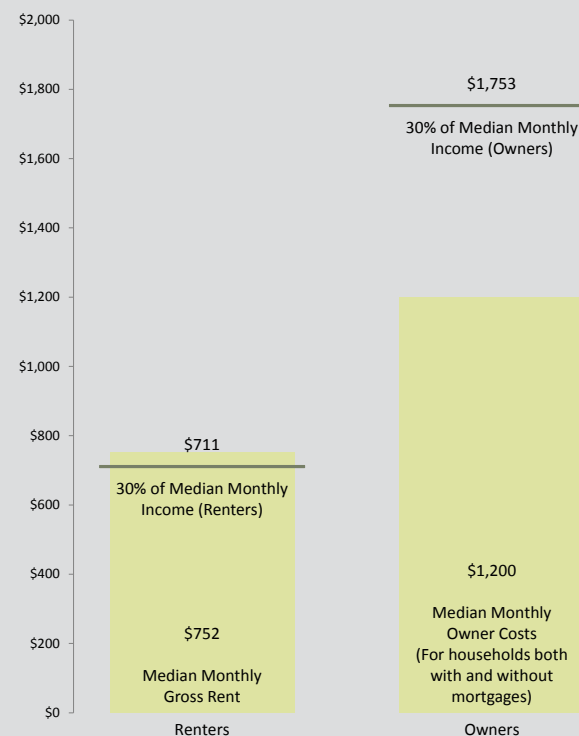


# 2006-2010 American Community Survey: Butler County

Median Earnings in the Past 12 Months (in 2010 Inflation-Adjusted Dollars) by Means of Transportation to Work  
Universe: Workers 16 years and over with earnings



Housing Affordability (in 2010 Inflation-Adjusted Dollars)  
Universe: Households



Statistics produced for American Community Survey and included in ACS tables are survey-based estimates and are subject to error. The errors derive from research design (including instrument bias, data frame, and sampling), the survey data collection (non-response bias and response errors), and processing by the Census Bureau (data coding, compilation processes, and case weighting), as well as statistical inference error and uncertainty (which are related to sample size and variance within the measured attributes). US Census Bureau's report on 'Accuracy of the Data' can be found at [http://www.census.gov/acs/www/data\\_documentation/documentation\\_main/](http://www.census.gov/acs/www/data_documentation/documentation_main/)