

## **Analysis of *Going Places* Implementation Tools**

### **Executive Summary**

**Revised March 3, 2014**

#### **About Miami Valley Regional Planning Commission**

Founded upon the principles of regional collaboration, cooperation, and consensus building, the Miami Valley Regional Planning Commission (MVRPC) serves as the common ground where area partners come together to work toward a shared vision across the region. The MVRPC Strategic Plan directs the agency's mission and goals. These goals include regional stewardship, vibrant communities, partnerships, and sustainable solutions and environment.

#### **About Going Places**

We live, work and play regionally and through Going Places we plan regionally. We seek to offer more as a region in order for each community to prosper. MVRPC's Board of Directors recognized the need for and importance of developing a regional land use plan to serve as a resource and guide to assist in local land use planning and decision-making processes. This led to Going Places, a regional land use planning initiative.

Working with two committees (Steering Committee and Planning Advisory Committee) appointed by the Board of Directors, MVRPC has documented where the region is now through multiple studies and assessments. Community members, businesses, local governments and organizations across the region were asked to share what they want this region to look like in the future. The input gathered led to the identification of a regional vision. This vision is the *Concentrated Development Vision*.

Going Places committee members met monthly beginning in April 2013 to develop the implementation strategies needed to make this vision happen.

#### **Going Places Implementation Tools**

This document is designed to present a draft collection of implementation tools for the consideration of MVRPC's stakeholders in preparation for completion of the final phase of the Going Places process.

After reviewing and analyzing the results of all of the feedback provided by the Steering Committee and Planning Advisory Committee between August and November 2013, Wise Economy Workshop (WEW), a consulting team, has identified 11 primary tools that encompass all of the tools that demonstrated a relatively high level of committee support.

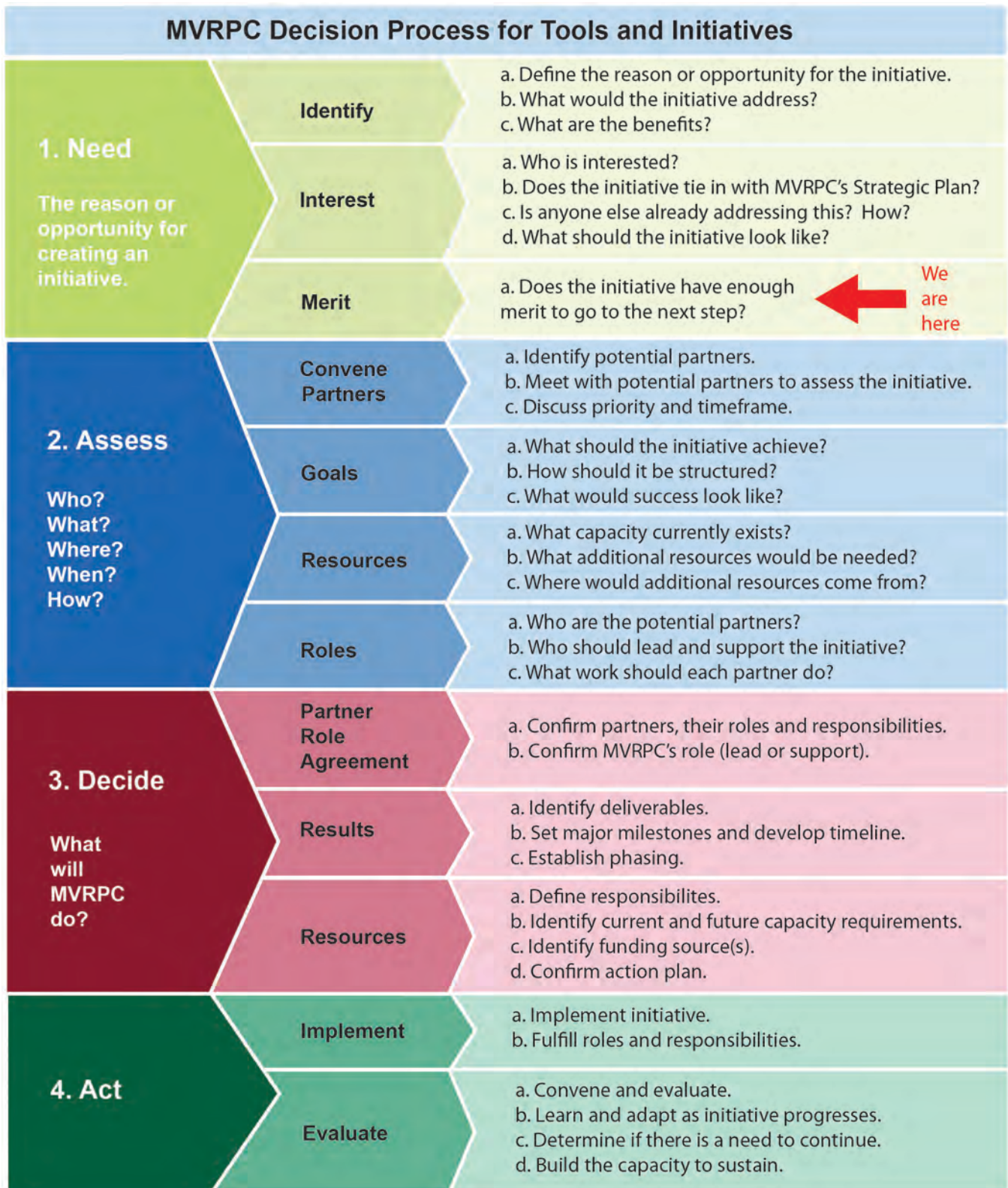
When compiled, the tools reflect three priorities that are evident throughout the initiative and provide a useful overarching organizational structure for understanding and evaluating the tools analysis. Priorities include:

- Priority #1: Better Information for Strong Decision Making
- Priority #2: Strengthen Regional Collaboration
- Priority #3: Build the Region's Capacity for Solutions

The following pages include MVRPC's decision process that will be used to evaluate each tool upon final approval by the Board of Directors and a description of the eleven recommended tools grouped by the three priorities.

## MVRPC Decision Process for Tools

The Going Places Implementation Plan summarizes the tools that are most likely to benefit the region. The best tools proceed to the next step of development. This entails an assessment of how each tool would be implemented, by which agency, and on what schedule. Each tool will undergo a thorough decision-making process before any action occurs. This process is displayed below. Based upon a discussion with partners, staff, and stakeholders during the assessment process, a decision will be made on how to proceed.



Priority #1: Better Information for Strong Decision Making

## Tool A: Shared Regional Geographic Information System (GIS)

### Overview

A Shared Regional GIS System provides a web-based, publicly accessible data system. This system allows for better understanding and visualization of data that reveals relationships and trends in the form of maps, reports, and charts. MVRPC would aid in the use of currently available in-house regional data. Data covers areas from demographics, zoning, land use, natural and built environment factors, infrastructure and other regional assets. New data would be created and maintained by MVRPC or provided by local governments and organizations as needed. MVRPC will aid with the use of the data by performing analyses upon request and developing training opportunities to help local government staff.

### Anticipated MVRPC Role and Potential Partners

MVRPC Role: MVRPC staff is currently in the process of developing a business plan for the purpose of providing enhanced GIS services using the current GIS capacity. MVRPC has technical capacity and expertise to lead this initiative in partnership with various organizations.

Potential Partners: Partners include local jurisdictions, other organizations that may or may not currently have GIS. Organizations may include, but are not limited to, the Dayton Development Coalition, Miami Conservancy District, Five Rivers MetroParks, transit agencies and private GIS firms. Training partners might include Southwest Ohio GIS Users Group, higher education institutions (Wright State University, University of Dayton, and Sinclair Community College), and secondary schools.

### Committee Identified Benefits

#### *Local Benefits*

- Increases the level of information and resources available
- Increases existing local staff capacity
- Reduces time and costs for projects
- Improves the quality of analysis
- Fast response to development
- Avoids duplication of efforts
- Resources for economic development

#### *Regional Benefits*

- Uniformity of information
- Analysis on a larger scale
- Enhances understanding of regional issues
- Improves coordination and cooperation
- Improves analysis and justification for funding requests
- Provides a platform for more advanced tools
- Makes the region more marketable
- Resources for agencies and organizations

### Background

The Shared Regional GIS System tool is a compilation of the following tools, as proposed by WEW, and identified for support from the Steering Committee and Planning Advisory Committee members during their review of these Tools for Consideration:

- Develop a shared GIS system as an information source for member jurisdictions (Acting Regionally Theme, Tool J, reviewed on Aug. 15, 2013)
- Conduct a training program in the use and application of GIS systems for local government staff (Local Government Theme, Tool C, reviewed on Sept. 10, 2013)
- Provide customized GIS-based data/analysis package to assist communities in local planning and development management (Assets Theme, Tool E, reviewed on Nov. 13, 2013)
- Develop a program of regional asset mapping (Assets Theme, Tool I, reviewed on Nov. 13, 2013)

### Examples

- Cincinnati Area Geographic Information System ([CAGIS](#))
- Some county planning commissions hold occasional training sessions. Few provide a consistent program.

## Tool A: Shared Regional Geographic Information System (GIS)

### *Input and Feedback Summary Log*

#### January 22, 2014 Steering Committee and Planning Advisory Committee meeting notes

- *How would this differ from present services?* It would provide increased accessibility, most likely be cloud based, provide increased capacity and come with additional technical training. For the smaller jurisdictions that do not have GIS, it will provide them a GIS service without having to invest in having the system themselves.
- *Is cost sharing assumed?* Yes, utilizing fees that MVRPC and local agencies are already paying. Expertise would be available to all and agency-wide licensing is anticipated to reduce software costs.

**Recommendation from the January 22 meeting:** Forward this tool to the Board and TAC in February for their review and input.

#### February 6, 2014 Board of Directors meeting notes

*None received*

#### February 20, 2014 Technical Advisory meeting notes

*None received*

#### February 19, 20 and 25 Open Houses and Virtual Open House notes

- Very valuable. Need current and standard information to base decision making (6 commenters)
- Information in this system should include information about public transit routes, available accessible sidewalk, and other disability related information.
- In Cuyahoga County they have access to NEOCANDO--a wonderful tool for the county land bank, treasurer's office and many other agencies. If this tool would be comparable to NEOCANDO, I would wholeheartedly endorse. When would it be available? How much to use? etc.
- GIS is an outstanding system. My concern is that most localities do not have trained on GIS. The only institution in the Dayton area that I know teaches GIS is Wright State. So, how will localities get the training needed to take full advantage of GIS?
- I'm thinking that census data is not included, income, neighborhood makeup etc. is good would begin to touch on historical issues as well
- Public accessible data system, glad to see the public has access.
- We all need a better understanding of geographic information and how it might affect the overall outcome to benefit all living things.

Priority #1: Better Information for Strong Decision Making

## **Tool B: Data Support for the Economic Development Site Selection Database**

### Overview

Businesses looking for locations within the Miami Valley have access to a powerful state-built site selection database provided by JobsOhio to help them quickly identify locations that meet their needs. The Dayton Development Coalition is the regional agency for JobsOhio, but data for each specific site is provided by local designated officials on a voluntary basis.

The value of this database for communities and businesses depends on the quantity and quality of information provided. Therefore, upon request, MVRPC would assist local jurisdictions and regional economic development agencies to compile needed information related to a specific site so that better and more data can be uploaded to the current site selection database. While some information may be available from the regional GIS resource identified in Tool A, MVRPC may also be able to provide other useful information that is not in map format, such as demographic information. MVRPC could partner with and support the Dayton Development Coalition in promoting and increasing the awareness of this existing database.

*Note: The tool was revised to reflect Committee recommendations.*

### Anticipated MVRPC Role and Potential Partners

**MVRPC Role:** MVRPC will support local communities by supplying data and information needed for the purpose of enhancing information on the JobsOhio site selection database upon request. MVRPC will assist the Dayton Development Coalition in promoting the use of the current site.

**Potential Partners:** Partners will include the Dayton Development Coalition, local chambers of commerce, local economic development agencies, homebuilders associations, real estate developers and utility companies.

### Committee Identified Benefits

#### *Local Benefits*

- Businesses get information more quickly
- Central knowledge of sites available
- Improved awareness of local strengths/needs
- Enhanced self-image
- Increase competitiveness
- Long-term influx of revenue and economic development

#### *Regional Benefits*

- Increased regional competitiveness
- More business friendly
- More marketable
- Brings funding to the region
- Accurate knowledge of sites & skill sets available
- Shared awareness of regional needs
- Improves analysis & justification for funding requests
- Provides a platform for more advanced tools

### Background

The Data Support for the Economic Development Site Selection Database tool as proposed by WEW, and identified for support from the Steering Committee and Planning Advisory Committee members during their review of these Tools for Consideration:

- Support the creative repurposing of underutilized regional infrastructure resources (Assets Theme, Tool B, reviewed Nov. 13, 2013)

### Examples

- [JobsOhio Site Selection Database](#)
- Many cities, counties and states use a service such as [GISPlanning](#) to create and administer this kind of database.

## **Tool B: Data Support for the Economic Development Site Selection Database**

### ***Input and Feedback Summary Log***

#### **January 22, 2014 Steering Committee and Planning Advisory Committee meeting notes**

- *Why needed?* To increase capacity and depth of data. Dayton Development Coalition reiterated several times it CANNOT control local site information input, and that insufficient data on sites leaves it difficult to forward sites when requests are made that often need 1-2 day responses from Dayton Development Coalition.
  - Need is not to establish something new, but to support and enhance existing systems.
- More data = better marketing and more comprehensive follow through supporting economic development activity.
- Key parameters—partner and co-developed with Dayton Development Coalition; need clear protocol of operations.
- It is useful in a backup function—can we rely on the changing desires from the state.
- Dayton Development Coalition concurs that this is valuable and data gathering is not a primary function of their operation. Dayton Development Coalition states that, ultimately, it is up to the property owners and local jurisdictions what sites are placed in the database, but that MVRPC could be of use in pulling together data, mapping, and standardization for jurisdictions.

**Recommendation from the January 22 meeting:** Forward this tool to the Board and TAC in February with revisions for their review and input. Revisions include recognizing the existing site selection database and amending what the tool is. It needs to be more clear how MVRPC can provide an educational forum regarding what the existing site is, how it is used, and how to develop data for the site. It needs to be clearer what MVRPC's role is and how they can support efforts to improve the data and supplemental information entered onto the site.

#### **February 6, 2014 Board of Directors meeting notes**

- Need clarification about Financial commitment, possible redundancy, better defined, with possible examples

#### **February 20, 2014 Technical Advisory meeting notes**

*None received*

#### **February 19, 20 and 25 Open Houses and Virtual Open House notes**

- This looks excellent to me (5 commenters)
- Businesses need to work together to benefit everything equally and safely.
- Good tool if utilized well--evens out competition in this region.
- Leery of economics over farm, open space, family farm.
- I understand how accurate information in the Jobs Ohio database increases economic development. What I don't understand is how the MVRPC would have superior data than the locality in question. What exactly will the MVRPC provide that locality doesn't have.
- Some local jurisdiction staffs are lean to nonexistent so getting a consistent depth of knowledge, info and details across the region could be challenging. How best to overcome?

## Priority #1: Better Information for Strong Decision Making

### Tool C: Return on Investment/Impact Analysis Tool

#### Overview

A return on investment/impact analysis tool helps a community seek high return on investments and manage projects. These projects could include development, redevelopment, preservation, and brownfield remediation.

This tool would allow communities the option to evaluate a wide variety of factors to predict the potential impacts, costs, and benefits of a proposed project. Further, this tool would allow communities to explore and examine alternatives during the project development process. Factors may include, but are not limited to potential tax revenues, infrastructure cost, short and long term maintenance costs, local and regional economic impact and environmental impact. MVRPC will partner with local jurisdictions, agencies and organizations to identify factors. The analysis tool would be web-based for ease of access by local government staff where they would enter their data for their own analysis.

#### Anticipated MVRPC Role and Potential Partners

MVRPC Role: MVRPC will coordinate the construction of this tool in partnership with potential users for determining tool parameters and beta testing. A consultant would be needed to build the tool.

Potential Partners: Partners will include local jurisdictions, regional organizations, local economic development agencies, and private developers. Other potential partners may include university research institutions such as Wright State University Center for Urban and Public Affairs and University of Dayton Business Research Group and faculty for their expertise.

#### Committee Identified Benefits

##### *Local Benefits*

- Enable communities to analyze project proposals more objectively
- Promote careful analysis
- Provide sound justification for decisions
- Save money
- Improved competitiveness in state and federal grants

##### *Regional Benefits*

- Better use of limited resources
- Avoid redundancies/overspending
- Decrease lag time
- Improved workforce opportunities across the region
- Better decision making across region
- Provide measuring stick
- Improve economic development
- Smarter decisions on infrastructure

#### Background

The Return on Investment/Impact Analysis tool is a compilation of the following tools, as proposed by WEW, and identified for support from the Steering Committee and Planning Advisory Committee members during their review of these Tools for Consideration:

- Create a tool that allows local governments to predict the potential impacts of a proposed development on such issues as tax revenue, public safety, road maintenance, etc. (Local Government Theme, Tool G, reviewed on Sept. 10, 2013)
- Develop a return on investment analysis tool (Assets Theme, Tool A, reviewed on Nov. 13, 2013)
- Support an acceleration of brownfield remediation to the region (Assets Theme, Tool C, reviewed on Nov. 13, 2013)

#### Examples

- [Strong Towns](#)
- [OKI's Fiscal Impact Analysis Model](#)
- Portland State University's [Triple Bottom Line Tool](#)

## **Tool C: Return on Investment/Impact Analysis Tool**

### ***Input and Feedback Summary Log***

#### **January 22, 2014 Steering Committee and Planning Advisory Committee meeting notes**

- Intent is not to evaluate member decisions by MVRPC, but have a trusted tool for members to self-analyze proposals.
- This type of analysis is beyond most community's capacity; such a tool could be valuable.
- It should offer alternatives, flexibility to modify variables. MVRPC does not offer anything like this presently.

**Recommendation from the January 22 meeting:** Forward this tool to the Board and TAC in February for their review and input.

#### **February 6, 2014 Board of Directors meeting notes**

- How the tools will be used. Will Tool C be used to select/reject funding for projects?
- Need clarification about Financial commitment, possible redundancy, better defined, with possible examples

#### **February 20, 2014 Technical Advisory meeting notes**

*None received*

#### **February 19, 20 and 25 Open Houses and Virtual Open House notes**

- Very important (3 commenters)
- Private developers scare people
- Since this tool is yet to exist, I'm concerned about its validity. If it is ever developed, who's to say it will work? Even if it is developed and does work, how do localities get the information. Do they have to get their staff trained on it or does the MVRPC do it for them?
- Sounds great but how feasible is it given current resource constraints at local governments?
- This tool will be valuable in educating stakeholders like government officials on how putting in accessibility features pays off economically, better use of para-transit resources.
- This will pay off and be a great asset now and in the long run.
- Review of cost at local and Region impact is a real plus for all involved especially citizens who will be paying taxes.
- Please expand availability of this tool beyond governmental entities.
- Agree with this--will assist communities with very small technical staff.



## Priority #1: Better Information for Strong Decision Making

### Tool D: Series of Regional Assets and Economic Analyses

#### Overview

This tool helps communities and the region identify and build on our unique assets. This tool would identify, document, and analyze important regional assets and economic indicators to benchmark, and monitor trends and progress. Assets may include, but are not limited to, the built environment, natural environment, transportation, infrastructure, employment, education, public and private institutions and other regional features. Interactive mapping of related assets will help identify opportunities to improve, strengthen and connect assets. This information will provide insights related to where the region stands and will serve as foundation for future planning, coordination, service delivery, and project development efforts.

#### Anticipated MVRPC Role and Potential Partners

**MVRPC Role:** MVRPC will coordinate and partner with organizations to develop this tool's scope, including identifying assets, determining indicators for measurement, and data collection. MVRPC would manage the data and mapping and lead the effort to prepare reports.

**Potential Partners:** Potential partners may include, but are not limited to, higher education research institutions, the Dayton Development Coalition, homebuilders associations, county Departments of Job & Family Services, the Kettering Foundation, public health departments, housing agencies, park districts, United Way, Miami Conservancy District, Greater Dayton Partners for the Environment and news media.

#### Committee Identified Benefits

##### *Local Benefits*

- Identifies resources that can be coordinated
- Provide accessible central clearing house
- Increased information to collaborate and work together
- Provide objective data to use and where things are
- Show what should be developed and preserved
- Showcases/builds upon our existing strengths
- Builds local service delivery

##### *Regional Benefits*

- Identify regional assets
- Identify gaps/disconnects
- Provide regional perspective of available assets
- Encourage interagency cooperation
- Be a source of neutral data for decision making
- Showcases our strengths
- Creates a bigger picture

#### Background

The Series of Regional Assets and Economic Analyses tool is a compilation of the following tools, as proposed by WEW, and identified for support from the Steering Committee and Planning Advisory Committee members during their review of these Tools for Consideration:

- Establish a center for regional economic data and analysis, in partnership with other agencies (Acting Regionally Theme, Tool G, reviewed on Aug. 15, 2013)
- Create and share regional performance indicators (Acting Regionally Theme, Tool H, reviewed on Aug. 15, 2013)
- Create and share maps illustrating key assets and gaps. (Acting Regionally Theme, Tool I, reviewed on Aug. 15, 2013)
- Conduct geographic distribution study of workforce, education and training resources and economic centers of activity (Workforce Theme, Tool B, reviewed on Oct. 10, 2013)
- Develop a program of regional asset mapping (Assets Theme, Tool I, reviewed on Nov. 13, 2013)

#### Examples

- MVRPC's 2005 State of the Region
- [Columbus 2020](#)
- MORPC's [Community Research Partners](#)

## Tool D: Series of Regional Assets and Economic Analyses

### *Input and Feedback Summary Log*

#### January 22, 2014 Steering Committee and Planning Advisory Committee meeting notes

- Goal would be to look into some key benchmarks and evaluate them systematically and regularly to better monitor trends and progress.
- Staff illustrated it as a potential continuously updated “State of the Region” report, last published in 2005.
- DDC does *not* do this, contrary to many committee members' assumption. Only recently did DDC launch an “Innovation Index”. Its goals and indices would not necessarily match up with all data points of interest to communities.

**Recommendation from the January 22 meeting:** Forward this tool to the Board and TAC in February for their review and input.

#### February 6, 2014 Board of Directors meeting notes

*None received*

#### February 20, 2014 Technical Advisory meeting notes

- What about Potential Partners that can represent the natural environment? Partners for the Environment, Ohio EPA, land trusts, Five Rivers MetroParks, Miami Conservancy District. What about Potential Partners that represent the active lifestyle assets? Park Districts, etc.

#### February 19, 20 and 25 Open Houses and Virtual Open House notes

- This is very beneficial (6 commenters)
- Very important part of the plan.
- I'm not 100% sure what a "key regional indicator trend" is. Assuming it is an economic indicator that shows how the region is trending, how will it be implemented? Will it simply be written recommendation to the localities or simply the sharing of raw data for their staffs to interpret?
- Definitely need to look at assets and economic benefits to all including people with disabilities.
- To the uninitiated, this looks like some overlap with Tool A.
- Regional dashboard? Start with a good dashboard that you can monitor easily and cost-effectively on an annual basis. Don't go for perfection & Cadillac version... start somewhere.
- Give to wide variety of stakeholders.

## Priority #1: Better Information for Strong Decision Making

### Tool E: Project Funding Competitiveness Analysis

#### Overview

Given increasingly tough competition for state and federal funding, this analysis would be available upon request to identify additional funding opportunities beyond MVRPC's regionally controlled federal transportation funding and focus on opportunities to increase a project's competitiveness for funding awards. MVRPC would partner with and support jurisdictions and organizations desiring to seek funding. MVRPC would analyze funding requirements and award trends, identify factors critical in winning competitive funding, connect organizations where collaboration would be beneficial, help refine project scopes to increase competitiveness and help identify positive regional impacts.

#### Anticipated MVRPC Role and Potential Partners

MVRPC Role: MVRPC will provide this service upon request by its members.

Potential Partners: Partners may include MVRPC members and funding partners.

#### Committee Identified Benefits

##### *Local Benefits*

- Increase efficiency
- Spend less through shared resources
- Get more projects completed
- Tie into state and federal initiatives that enable funding
- Provides rationale for local decision making

##### *Regional Benefits*

- Improve regional collaboration
- Improve competitiveness for receipt of funding
- More regional impact
- Completion of projects in a timely manner
- Funds projects otherwise not obtainable by individual government agencies or organizations

#### Background

The Project Funding Competitiveness Analysis tool is a compilation of the following tools, as proposed by WEW, and identified for support from the Steering Committee and Planning Advisory Committee members during their review of these Tools for Consideration:

- Identify ways to increase a proposed project's funding competitiveness by increasing or highlighting its regional impact (Acting Regionally Theme, Tool A, reviewed on Aug. 15, 2013)
- Develop Matchmaker program to actively connect local agencies and develop regional projects that can compete for funding. (Acting Regionally Theme, Tool B, reviewed on Aug. 15, 2013)
- Support search and application efforts for regional funding, particularly for connecting transportation/land use coordination with economic objectives (Acting Regionally Theme, Tool F, reviewed on Aug. 15, 2013)

#### Examples

- Many Midwestern MPO/RPCs conduct such analysis and make recommendations on an ad hoc basis, but it is not typically identified as a specific policy or work item. Most successful TIGER II projects resulted from specific efforts like this.
- MVRPC's Project Evaluation System workshop
- MORPC's [Central Ohio Regional Shared Services Steering Committee](#)

## Tool E: Project Funding Competitiveness Analysis

### *Input and Feedback Summary Log*

#### January 22, 2014 Steering Committee and Planning Advisory Committee meeting notes

- MVRPC staff categorically stated that this is **NOT** about transportation funding. It is proposed to assist members in competitive grant programs not administered through MVRPC.

**Recommendation from the January 22 meeting:** Forward this tool to the Board and TAC in February for their review and input.

#### February 6, 2014 Board of Directors meeting notes

*None received*

#### February 20, 2014 Technical Advisory meeting notes

*None received*

#### February 19, 20 and 25 Open Houses and Virtual Open House notes

- Good tool to offer (5 commenters)
- How exactly will the MVRPC increase the competitiveness of local projects for State and Federal funds? Will it be some kind of service that a locality can request? Is it some sort of training that the MVRPC will provide to localities?
- Good luck using this tool without raising suspicions among jurisdictions. Make sure priorities are well supported.
- Be fair to everyone is important. If all feel they are getting a fair deal then working together is easier.
- Tool E should be opened to larger use within the area; it should not be restricted to use by the governmental entities.
- Development and implementation of light rail should be pursued again. Educate state officials of its need. I am tired of limited or no access to events and opportunities outside this region.
- Of less interest at this stage.
- We have to use our money wisely.

## Priority #2: Strengthen Regional Collaboration

### Tool F: Forum for Regional Transportation and Development

#### Overview

A forum with a broad cross section of leaders and stakeholders from the Miami Valley region would be convened on a regular basis to share perspectives on regional challenges, opportunities, and coordination efforts. The forum would occur at least once per year and would be designed and promoted to focus on important regional issues and the identification of regional priorities and initiatives.

#### Anticipated MVRPC Role and Potential Partners

**MVRPC Role:** MVRPC will coordinate and host this forum, and will be a liaison during regional discussions hosted by other agencies.

**Potential Partners:** Partners may include, but are not limited to, MVRPC members, local economic development agencies, chambers of commerce, homebuilders associations, boards of realtors, and the Miami Valley section of American Planning Association.

#### Committee Identified Benefits

##### *Local Benefits*

- Open interjurisdictional conversation
- Enable local jurisdictions to help establish regional priorities
- Broader understanding of regional issues
- Improved quality of decision making

##### *Regional Benefits*

- Broaden support & understanding of local issues
- Facilitate more effective use of limited resources
- Improved quality of decision making

#### Background

The for Regional Transportation and Development tool is a compilation of the following tools, as proposed by WEW, and identified for support from the Steering Committee and Planning Advisory Committee members during their review of these Tools for Consideration:

- Convene a regular, structured regional forum to collaboratively identify and prioritize regional infrastructure priorities (Acting Regionally Theme, Tool D, reviewed Aug. 15, 2013)
- Support inclusion of transportation and/or land use issues in existing regional forums through stronger partner roles (Acting Regionally Theme, Tool E, reviewed Aug. 15, 2013)

#### Examples

- MVRPC currently hosts the Going Places committee meeting, transportation coordination forum each quarter, and hosts the bike and pedestrian committee meeting as needed. MVRPC staff also has a long history of involvement with Miami Valley Planning and Zoning Workshop hosted by Miami Valley section of American Planning Association. In the past, MVRPC has hosted the Regional Issues Forum at Sinclair Community College.
- Pittsburgh's [Congress of Neighboring Communities \(CONNECT\)](#)
- Cincinnati's [Agenda 360](#)

## Tool F: Forum for Regional Transportation and Development

### *Input and Feedback Summary Log*

#### January 22, 2014 Steering Committee and Planning Advisory Committee meeting notes

- No commentary.

**Recommendation from the January 22 meeting:** Forward this tool to the Board and TAC in February for their review and input.

#### February 6, 2014 Board of Directors meeting notes

*None received*

#### February 20, 2014 Technical Advisory meeting notes

*None received*

#### February 19, 20 and 25 Open Houses and Virtual Open House notes

- This is a great tool to help educate the general public as to what is going on in the region.
- Important tool to bring stakeholders together to help ensure inclusiveness in terms of neighborhoods and community. Time to refocus if some concern is being overlooked.
- Needed (Good luck in Beavercreek!) (Someday, passenger rail service?)
- Everyone needs a voice
- Include means of public transportation.
- Might help funding for area. I have no other thoughts on this issue. Need a Regional connection for trucks and rail.
- This is fine but it is just a forum. A forum is simply a discussion which I don't feel qualifies as a tool. Why isn't it strengthened by a commission that makes recommendations to local governments in order to create an overall regional transportation plan?
- I strongly believe that our regional leaders must meet no less than two or three times per year if we are to make any significant progress on the larger regional cooperation efforts. The leaders must build trust that can be formed only with regular interaction, and the issues are so significant that they require more-consistent focus and consideration.

Priority #2: Strengthen Regional Collaboration

## Tool G: Targeted Subgroups to Address Specific Issues of Local Jurisdiction Coordination

### Overview

MVRPC would help connect and convene willing key participants to identify shared solutions for specific local and regional challenges. Upon request, MVRPC would help organize and facilitate meetings between groups. MVRPC would also support existing coordination efforts from various associations or groups. The goal would be to facilitate coordination and cooperation while supporting the search for solutions to specific issues identified by local jurisdictions and agencies. MVRPC would provide staff support, meeting space, and information to support the group’s decision-making process. Groups may include local governments, businesses, public and private institutions, educational institutions, regional organizations and stakeholders. Topics would be selected by the participants, but could include comprehensive and land use planning, zoning regulations, infrastructure, transportation, development, preservation and natural resources.

### Anticipated MVRPC Role and Potential Partners

MVRPC Role: MVRPC will serve as a host for jurisdictions and agencies that request this service. MVRPC will provide other staff support including best practices research, data and mapping.

Potential Partners: Potential partners would include, but are not limited to, local jurisdictions, government agencies, organizations, school districts, utilities, libraries, and others. Examples of existing associations that MVRPC could provide support for include: Dayton Area City Managers Association, Mayors and Managers Association, First Suburbs Consortium of Dayton, township associations, MCO Future, and the Miami Valley Communications Council.

### Committee Identified Benefits

#### *Local Benefits*

- Get all stakeholders to the table including non governmental organizations, ad hoc groups, individuals
- Help prioritize regional projects

#### *Regional Benefits*

- Create a culture of regionalism
- Focus resources
- Work regionally
- Improved cooperation

### Background

The Targeted Subgroups to Address Specific Issues of Local Jurisdiction Coordination tool is a compilation of the following tools, as proposed by WEW, and identified for support from the Steering Committee and Planning Advisory Committee members during their review of these Tools for Consideration:

- Convene and facilitate a regulatory coordination committee to identify and develop shared strategies for addressing common regulatory issues (Local Government Theme, Tool E, reviewed on Sept. 10, 2013)
- Convene and facilitate targeted discussions between local government representatives and regional or sub-regional businesses and institutions to identify solutions to land use/transportation issues (Local Government Theme, Tool K, reviewed on Sept. 10, 2013)
- Facilitate conversations between school districts and local governments to improve awareness of and coordination around school/community land use and transportation issues (Workforce Theme, Tool F, reviewed on Oct. 10, 2013)

### Examples

- Local ad hoc group created 10 years ago to develop consistent regulations on broadly shared topic.
- Cincinnati’s [Agenda 360](#)

## Tool G: Targeted Subgroups to Address Specific Issues of Local Jurisdiction Coordination

### *Input and Feedback Summary Log*

#### January 22, 2014 Steering Committee and Planning Advisory Committee meeting notes

- MVRPC role will be to host/convene the topics as proposed through the membership.
- *Is it different from the City Managers Group?* Maybe, but that group does not address that other jurisdictions and positions don't have that form of support and interaction.
- Increasingly, funding is tied to collaboration and leveraged resources. This type of forum would assist.
- This is perceived as a "come if necessary" function not required by all. MVRPC cross-pollinates and communicates.

**Recommendation from the January 22 meeting:** Forward this tool to the Board and TAC in February for their review and input.

#### February 6, 2014 Board of Directors meeting notes

*None received*

#### February 20, 2014 Technical Advisory meeting notes

*None received*

#### February 19, 20 and 25 Open Houses and Virtual Open House notes

- Very much needed (3 commenters)
- If I understand this to be subject matter experts that the MVRPC provides to localities to assist in resolving issues, it is an excellent idea.
- School districts really could benefit from this. In my experience they are not aware of MVRPC offers.
- Make sure you make one of the subgroups seniors and people with disabilities.
- Communication always beneficial but doesn't have any "teeth".
- Everyone needs a voice
- This tool needs to be used for bringing stakeholders together.
- I'm more interested in this, as a member of a non-government group (Dayton Canoe Club, DCC Inc.)



Priority #3: Build the Region's Capacity for Solutions

## Tool H: Regional Collaboration Training Program

### Overview

A regional collaboration training program would provide interested regional stakeholders wanting to enhance cross-discipline and organizational collaboration skills with an opportunity for learning specific, actionable skills and techniques to help them build consensus, manage conflict constructively and establish a basis for shared action around common goals held by individuals and interest groups. The training would be designed to enhance available training opportunities already available to elected and appointed officials, members of nonprofit organizations and interested members of the public. The length and content of the program would be developed, based on staff availability and other resources, under the guidance of a committee of MVRPC members. This program will serve as a foundation for and facilitate advancing the Regional Stewardship goal in MVRPC's Strategic Plan.

*Note: The tool was revised to reflect Committee recommendations.*

### Anticipated MVRPC Role and Potential Partners

MVRPC Role: MVRPC will help convene and provide support for the coordination of the program.

Potential Partners: Partners may include local jurisdictions, regional agencies, and organizations and higher education institutions.

### Committee Identified Benefits

#### *Local Benefits*

- Help get people involved
- Understand government workings and their responsibilities

#### *Regional Benefits*

- Create a culture of regionalism
- Increase citizen participation
- Increase awareness of regional issues and challenges

### Background

The Regional Collaboration Training program tool is a compilation of the following tools, as proposed by WEW, and identified for support from the Steering Committee and Planning Advisory Committee members during their review of these Tools for Consideration:

- Develop a regional citizen's government academy (Local Government Theme, Tool J, reviewed on Sept. 10, 2013)
- Establish regional leadership training model (Image Theme, Tool K, reviewed on Oct. 10, 2013) \*new tool proposed by committees

### Examples

- Cornell's [Community and Regional Development Institute](#)
- Columbus' [ED411](#)

## Tool H: Regional Collaboration Training Program

### *Input and Feedback Summary Log*

#### January 22, 2014 Steering Committee and Planning Advisory Committee meeting notes

- As proposed it was not as much about “leadership” training as it was about establishing an informed collective of government and citizens on topics and issues.
- *Could be geared more to officials?* It was noted Ohio and Miami Valley are less effective at training officials about the roles and responsibilities compared to other states and regions.
- Some expressed this as an opportunity to bring the varied jurisdictions together, mixing townships/villages/cities/counties.
- Some continued to support the role of informing the public as often it is ill informed on governance principles and practices.

**Recommendation from the January 22 meeting:** Forward this tool with revisions to the Board and TAC in February for their review and input. Revisions include changing the wording of the tool and clarifying how the program would be developed.

#### February 6, 2014 Board of Directors meeting notes

- Need clarification about Financial commitment, possible redundancy, better defined, with possible examples

#### February 20, 2014 Technical Advisory meeting notes

- Cooperation/Collaboration may be most fruitful if moderated/arbitrated by a third party. May be worth considering.

#### February 19, 20 and 25 Open Houses and Virtual Open House notes

- This is an outstanding idea assuming it is cost free to the localities. It should also be open to the interested public. (5 commenters)
- Definitely need more training involved when wanting to meet the needs of everyone including people with disabilities and seniors.
- Nice to have, but would not be my top priority.
- Training should include focus on increasing disability awareness to increase understanding of impact on the disability community relative to projects chosen and their priority.
- This helps to help get people more involved.

## Priority #3: Build the Region's Capacity for Solutions

### Tool I: Innovative Solutions for Sustainable Development and Redevelopment

#### Overview

MVRPC would support sustainable development and redevelopment efforts at the local level by being a resource for local jurisdictions and regional partners. MVRPC would manage data resources for mapping and analysis, research best practices for sustainability and help with funding opportunities. This initiative could focus on sustainable design, vacant properties, brownfields, water and air quality, transportation and existing infrastructure.

#### Anticipated MVRPC Role and Potential Partners

**MVRPC Role:** MVRPC will support and collaborate with regional organizations and agencies to provide necessary data, analysis, and research.

**Potential Partners:** Partners may include, but are not limited to, Miami Conservancy District, Montgomery County Land Bank, boards of public health, transit agencies, the Access Center for Independent Living, Miami Valley Fair Housing Center, Urban Land Institute, Habitat for Humanity, boards of realtors, homebuilders associations, Dayton Regional Green Initiative, Ohio Development Services Agency and sustainability office/programs of higher education institutions.

#### Committee Identified Benefits

##### *Local Benefits*

- Effective use of resources
- Promote redevelopment
- Improve Aesthetics
- Economic development tool

##### *Regional Benefits*

- Attracting new uses for resources
- Maximize return on current investments
- Bring funding to the region
- Enhanced attractiveness of communities

#### Background

The Innovative Solutions for Sustainable Development and Redevelopment tool is a compilation of the following tools, as proposed by WEW, and identified for support from the Steering Committee and Planning Advisory Committee members during their review of these Tools for Consideration:

- Support and enhance regional economic development efforts to pursue economic gardening (Workforce Theme, Tool D, reviewed on Oct. 10, 2013)
- Support the creative repurposing of underutilized regional infrastructure resources (Assets Theme, Tool B, reviewed on Nov. 13, 2013 )
- Support an acceleration of brownfield remediation in the region (Assets Theme, Tool C, reviewed on Nov. 13, 2013)

#### Examples

- While many regional and national nonprofits and think tanks are talking about the need to find creative reuse opportunities, none to date have implemented funding to try to spur development and implementation of these concepts. MVRPC could partner with a foundation to become a national leader on this topic.
- County and city economic development agencies in many of the Midwest's metro areas have staff dedicated to brownfield assessment and revitalization. Smaller brownfields in smaller communities, however, are often not addressed, to the disadvantage of the community and region.
- Economic Gardening is a method for supporting the growth of local businesses that have high potential for employment growth. More information is online at <http://edwardlowe.org/tools-programs/economic-gardening/>.

## **Tool I: Innovative Solutions for Sustainable Development and Redevelopment**

### ***Input and Feedback Summary Log***

#### **January 22, 2014 Steering Committee and Planning Advisory Committee meeting notes**

- Tools I and J were discussed jointly as they were similar programmatically just varied on their emphasis.
- *Why were cash prizes proposed?* Expectation is the money is not governmental, but having a prize often attracts outsiders into the potential solutions.
  - Examples discussed included the “X Prize” and a similar public project based in Cleveland.

**Recommendation from the January 22 meeting:** Forward this tool to the Board and TAC in February for their review and input.

#### **February 6, 2014 Board of Directors meeting notes**

*None received*

#### **February 20, 2014 Technical Advisory meeting notes**

- Dayton Regional Green Initiative, and the colleges and universities have a Sustainability Managers group.
- How will you determine the "necessary data, analysis, and research?"

#### **February 19, 20 and 25 Open Houses and Virtual Open House notes**

- This is needed (3 commenters)
- Will the MVRPC simply provide requested data to a locality or is it some sort of training plan.
- I agree with the recommendations. Geothermal systems that use the Greater Dayton Aquifer for heating and cooling should be considered when businesses and entities are located above the aquifer, as this technology can reduce facilities costs significantly.
- Hopefully the regional partners will take advantage of this--but MVRPC appears to be taking in too much responsibility.
- This tool should include disability related information to target areas not usable by the disability community.
- Have to be careful when using this tool.
- This is much more interesting. Many vacant properties have been abandoned, no tax income.
- Would like to see more focus on redevelopment.

Priority #3: Build the Region's Capacity for Solutions

## Tool J: Innovative Solutions for Natural Resources Preservation and Enhancement

### Overview

MVRPC would help raise awareness of established and innovative solutions for natural resource preservation and enhancement issues. MVRPC would help manage data resources for mapping and analysis. MVRPC would research best practices for natural resources preservation. Given the issues identified to date, this effort would focus on strategies for low impact development, managing stormwater runoff, and groundwater quality management.

### Anticipated MVRPC Role and Potential Partners

MVRPC Role: MVRPC's environmental planning program housed under the Department of Sustainable Solutions and Transportation Alternatives is currently leading the effort to promote and advance natural resource preservation with various regional partners. This program will serve as a foundation and facilitate advancing the Sustainable Solutions and Environment Goal in MVRPC's Strategic Plan.

Potential Partners: Partners may include Miami Conservancy District, Five Rivers MetroParks and other park districts, Greater Dayton Partners for the Environment, land conservation organizations (such as Tecumseh Land Trust and Three Valley Conservation Trust), county Soil & Water Conservation Districts, watershed groups, Ohio EPA, Ohio Department of Natural Resources, and Natural Resources Conservation Service.

### Committee Identified Benefits

#### *Local Benefits*

- Saves money
- Promote natural resources protection
- Improve aesthetics

#### *Regional Benefits*

- Attracting new uses for resources
- Maximize return on current investments
- Bring funding to the region
- Conservation of important assets

### Background

The Innovative Solutions for Natural Resources Preservation and Enhancement tool is a compilation of the following tools, as proposed by WEW, and identified for support from the Steering Committee and Planning Advisory Committee members during their review of these Tools for Consideration:

- Research and share sustainable design/low impact development methods, particularly for water management (Assets Theme, Tool J, reviewed on Nov. 13, 2013) \*new tool proposed by committees
- Increase support of watershed, groundwater and surface water issues in the region (Assets Theme, Tool F, reviewed on Nov. 13, 2013)

### Examples

- MVRPC Environmental Planning Program
- [Miami Conservancy District Low Impact Development Program](#)
- [Ohio Balanced Growth Program](#)

## **Tool J: Innovative Solutions for Natural Resources Preservation and Enhancement**

### ***Input and Feedback Summary Log***

#### **January 22, 2014 Steering Committee and Planning Advisory Committee meeting notes**

- See Tool I meeting notes

#### **February 6, 2014 Board of Directors meeting notes**

*None received*

#### **February 20, 2014 Technical Advisory meeting notes**

- How about researching practices that specifically can be used for transportation projects? Given the issues identified to date, this effort would focus on strategies
- Is the goal to “improve” strategies? Or “increase”? for low impact development, managing stormwater runoff, and groundwater quality management, Green Infrastructure
- It is the Three Valley Conservation Trust—not Twin Valley. MCD’s program is called "Building our Future" not "Low Impact Development".

#### **February 19, 20 and 25 Open Houses and Virtual Open House notes**

- Very important (3 commenters)
- Ask me about storm water runoff and plastic trash in ever creek, pond, and river. Why should we continue to pay to shovel up after the plastics vendors?
- How exactly will the MVRPC promote conservation? Is it simply an education program for local staffs or will they "score" environmental impacts on local projects?
- It might help to make people aware of all that has been done already.
- Good goal hopefully there are state and federal funding for implementation.
- We need natural resources preservation and enhancement for our environment.
- Be very innovative with our natural resources. Nature is a beautiful thing.
- A positive is the protection of what needs to be saved for the future as well as the present. Those who just plan to develop is very short sighted. I would like to see conservation builders and realtors and others who included here, those who gain from building but care about out natural resources. A watershed plan is important—rural water planning, water runoff, saving flood plains, and wooded areas etc. is a must. This area is blessed with water but to put it in large ponds and to dump it in the streams and rivers is foolish and costly.

Priority #3: Build the Region's Capacity for Solutions

## **Tool K: Miami Valley Story Project for More Meaningful Regional Marketing and Increased Local Tourism**

### Overview

This tool is designed to market the Miami Valley as a region, to residents and to outside interests. Since the region has such a wide variety of communities and resources, this would reveal and articulate a series of authentic statements and images that can be woven into regional marketing efforts of all types. This initiative provides a positive way to raise general public awareness of the region as a whole. This initiative would not be led by MVRPC, but should be led by regional marketing and economic development specialists. The key challenge of this initiative is in promoting it, and therefore, a regional tourism agency would be a good lead agency.

### Anticipated MVRPC Role and Potential Partners

MVRPC Role: MVRPC will assist the lead agency, to be determined.

Potential Partners: Partners may include local jurisdictions, tourism agencies (Dayton Convention Center, Greene County Convention & Visitors Bureau, and Miami County Convention & Visitors Bureau), higher education institutions, chambers of commerce and young professionals groups, marketing agencies and organizations, and media.

### Committee Identified Benefits

#### *Local Benefits*

- Change conversation to positive aspects
- Bring more people to each locale
- Attraction/retention of talent
- Increased population
- Flourishing businesses

#### *Regional Benefits*

- Positive perceptions of region
- Awareness of opportunities
- Keep revenue circulating in the region

### Background

The Miami Valley Story Project tool is a compilation of the following tools, as proposed by WEW, and identified for support from the Steering Committee and Planning Advisory Committee members during their review of these Tools for Consideration:

- Build partnerships with other agencies to develop an "authentic narrative" about the region as a means to build internal understanding of the area's uniqueness and support more meaningful marketing (Image Theme, Tool G, reviewed on Oct. 10, 2013)
- Support development of a "Tourism for Locals" program (Image Theme, Tool H, reviewed on Oct. 10, 2013)

### Examples

- [Cincinnati Agenda 360's Story Project](#)
- [MVRPC's regional bike map](#) and regional marketing efforts

## Tool K: Miami Valley Story Project for More Meaningful Regional Marketing and Increased Local Tourism

### *Input and Feedback Summary Log*

#### January 22, 2014 Steering Committee and Planning Advisory Committee meeting notes

- This is probably the most outside of MVRPC's strengths. It probably isn't the entity to craft the message, but help find the salient points to discuss.
- This is perceived to help with regional discussions of integrating other assets/institutions, such as the arts organizations.
- MVRPC demonstrated an example of this as the River Project and how bike planning and coordination has led to regional promotion of the totality of the bike trail assets.
- There are challenges here in promotion because there is no regional convention and visitors' bureau.
- Appreciated because it gives a voice to the concept of "We are a Region!"
- *If MVRPC is not the lead, who is the alternate entity?* No one offered alternate.
- We are the weakest region in Ohio explaining our benefits, when viewed in for example, Ohio tourism website.

**Recommendation from the January 22 meeting:** Forward this tool to the Board and TAC in February for their review and input.

#### February 6, 2014 Board of Directors meeting notes

*None received*

#### February 20, 2014 Technical Advisory meeting notes

- Need clarification on appropriate entities—possibly a list of possible entities

#### February 19, 20 and 25 Open Houses and Virtual Open House notes

- Very important! We need to stand united as a region! (2 commenters)
- Work on directing marketing to all citizens including people with disabilities and other special need groups. (2 commenters)
- Who or what exactly would be the lead agency? Would this be at no cost to local governments? (2 commenters)
- Important to Miami County
- Family history and historical homesteads should not be forgotten in marketing area. Genealogy is big business and people travel to research families and homes and neighborhoods.
- Great concept - and centralization of the stories will improve their preservation and availability.
- I have one specific question: Does gambling opportunities increase or decrease tourism (and other business) in a community? Thanks.
- The area has one of the nation's best recreational trail systems but nobody knows it. Must have instant recognition of this just as the ATA from Pittsburgh to DC is recognized. People will come if they only know it is here.
- Once you figure out what the story will be, marketing effectively is vital.



## General Comments

### Board of Directors exit survey notes

- Support means? Can MVRPC staff act as planners for smaller jurisdictions?
- Excellent Plan! Let's hope it is embraced and implemented region-wide!
- Public awareness of meetings is important.
- Figure out your niche. Such as mapping and data services. Applying best practices to TRANSPORTATION PROJECTS. Get them to clean up their practices. Maybe MVRPC should focus on improving and expanding their current services rather than taking on new services.
- This set of tools are ambitious and will be difficult for staff to implement in a reasonable amount of time. This may result in their delay and lack of confidence in there [sic] usage and staff ability to apply. I still feel MVRPC staff will be stretched thin trying to accomplish these tools successfully. MVRPC budget can't increase long term to implement these tools.
- How do these tools related to the "GP Vision" document? There seems to be a disconnect between the two phases.
- Good Job!
- Too many tools. Need to be combined and/or eliminated. Previously commented on specifics.
- Not enough comments were received from board members outside committee. Based on percent of response, not on committee and percent of disagreement with certain tools, a significant percent of respondents not on committee disagree with some tools.
- I appreciate the hard work and persisting commitment to this project. I am very encouraged how helpful these tools will be for us.
- There are a lot of tools. Are you going to lose the core of transportation in the organization.
- Great job, very happy about the "tools" concept.
- Far too many tools for MVRPC staff to implement without compromising primary responsibilities.
- If all tools are implemented, it could change the role of MVRPC staff, increase staff, and require acceptance and understanding of "outside" partners.
- Keep the theme "Tools not Rules" (build acceptance). "Going Places" has potential, positive benefit to our region.
- It is unclear where MVRPC will get funding to take on these additional activities. There is also a great risk of duplication of services already offered by other agencies. MVRPC's proposed role for all the tools needs to be better defined and vetted by "potential partners".
- With all the discussions, think MVRPC really turned this around into a very positive tool box.
- No, suggestion to reach out to I-70-75 Development Association to present Going Places presentation.

### Technical Advisory exit survey notes

- I don't see how this initiative addresses the fact that we are all competing against each other. It sort of glazes over the fact that the region identified that it wants development to go where infrastructure already exists, yet communities have little opportunity to increase (and in almost all our cases replace) revenue except to grow their tax base and develop.
- Really need to stress the fact that these are strictly tools-not obligations being put on the public.
- Stop the madness and forget you ever started this

- Sustainability is a widely used term across many disciplines today. Please clarify what it means in terms of development and community livability.

### February 19, 20 and 25 Open Houses and Virtual Open House notes

- I'm pleased to see the progress of this endeavor over the years. The results of earlier steps are clearly evident as this moves forward.
- All of these tools sound good, but if I had to pick one I'd request Tool A: Shared Regional GIS. I also would endorse Tool D: regional dashboard. The development of these two tools would bring extra decision-making tools.
- My interpretation of the event and handout is that MVRPC wants to develop "tools" described herein, and that these tools will then be available and useful to many entities in the MV. I was expecting a presentation on a MVRegional Plan--or some ideas that could be under consideration. Our unique location at the crossroads of I-75 & I-70, 90 minutes and 500 mile access to a high % of Americans is exciting. Is there a vision? Plan?
- Projects need to be chosen that benefit public transit riders. Economic development in this region focuses on drivers and promotes separateness and not inclusion of all people.
- Keep up the good work!
- I would like to see more development in the area and more better paying and high-tech jobs coming to this area than what we have currently. I am a recent college graduate and I cannot find a position in my career field at all in this area and if I could, I would move out of this area in order to find a job but for now I am stuck here in the Miami Valley area.
- Thank you for the newspaper insert invitation. I came here by RTA Rt. 12 N and RTA Rt. 1W buses. This Center for Regional Cooperation facility is nice. I read all the seven poster boards. I read the 24-page executive summary. I'm glad I came. I will file the executive summary for future reference. Thank you for the snacks.
- There appears to be more tools than the MVRPC staff can implement without affecting their present responsibilities
- Inviting those to the table who have interest in the past, present and future of the region. Especially citizen that are interested in the quality of life. Where do you find these people? Look at different social groups not normally thought of? Look at senior citizen centers, churches and Sunday school classes, 4-H leaders and 4-H members, school students- FFA and environmental groups, school teachers, nature centers, veterans, Granges, Farm Bureau, granary owners, Soil and Water and those who belong to historical groups. Also the City council, plan and zoning board members of cities, counties and townships.
- Many of the cities, counties and townships representatives to the regional are here at this region for the jobs and will leave when another job comes along. Some of these citizen's families have lived here for generation and need to be included. Inviting the stakeholders to the table is a must.
- Would have preferred a video presentation. Keep up the good work. I don't care how you do it just get it done.
- I took up a lot of Mr. Kim's time with questions and discussion. He was very gracious patient & kind in responding. I am naturally suspicious of this kind of "group think" planning and possible ties to sustainable development--Agenda 21 movement. I am also wondering why this kind of vast regional planning is necessary when each county and many townships have their own zoning resolutions, planning commissions, land use boards, etc. Same for area municipalities. I appreciated very much Mr. Kim's time, but I am

disappointed that there was no speaker or presentation about Going Places wherein we could have expressed our concerns. Going around looking at posters of materials I had already seen on the web was not very meaningful or informative. -- But thank you for coming. I am also not convinced contrary to what Mr. Kim expressed that MVRPC board members do not go back to their constituent cities, townships, zoning boards, etc. and begin implementing/imposing aspects of the MVRPC "vision."

- I feel that all these tools can be helpful as long as they can be used to benefit all people as long as [sic] endanger their safety and well-being.
- I am very happy to see the leadership and direction you are going to help the area. Thanks for your insights. Good luck on implementation of your goals.
- I read the draft 'Going Places' recommendations and the Executive Summary from the WEW. I strongly support the WEW recommendations. I believe the Executive Summary provided a good set of practical recommendations and next steps. I strongly support development and coordination of tools and information for sharing on a local basis. First, it represents tremendous common sense to centralize and share the creation of the information. Second, those central tools and services offer consistency in the methodology to be used to collect and share the information. I recommend a method for non-governmental entities to take advantage of the information and tools, as the benefits could be expanded significantly when the tools and info are shared more widely within our region. Even a project that does not rise to the top priority regionally should be able to glean the benefits of these locally funded tools and information as they assemble their best information and ROI analysis. Thank you for your consideration of my comments.
- Thank you for your online presentation. In my opinion the use of Tool G must be emphasized. I believe it would be clearer if you called Tool G—Meetings of MVRPC Stakeholders on Targeted Issues Requiring Local Jurisdiction Coordination. All the other Tools look great and I look forward to your continued assistance as we live and work and plan our shared future. Thank you for asking me to comment on your proposal.