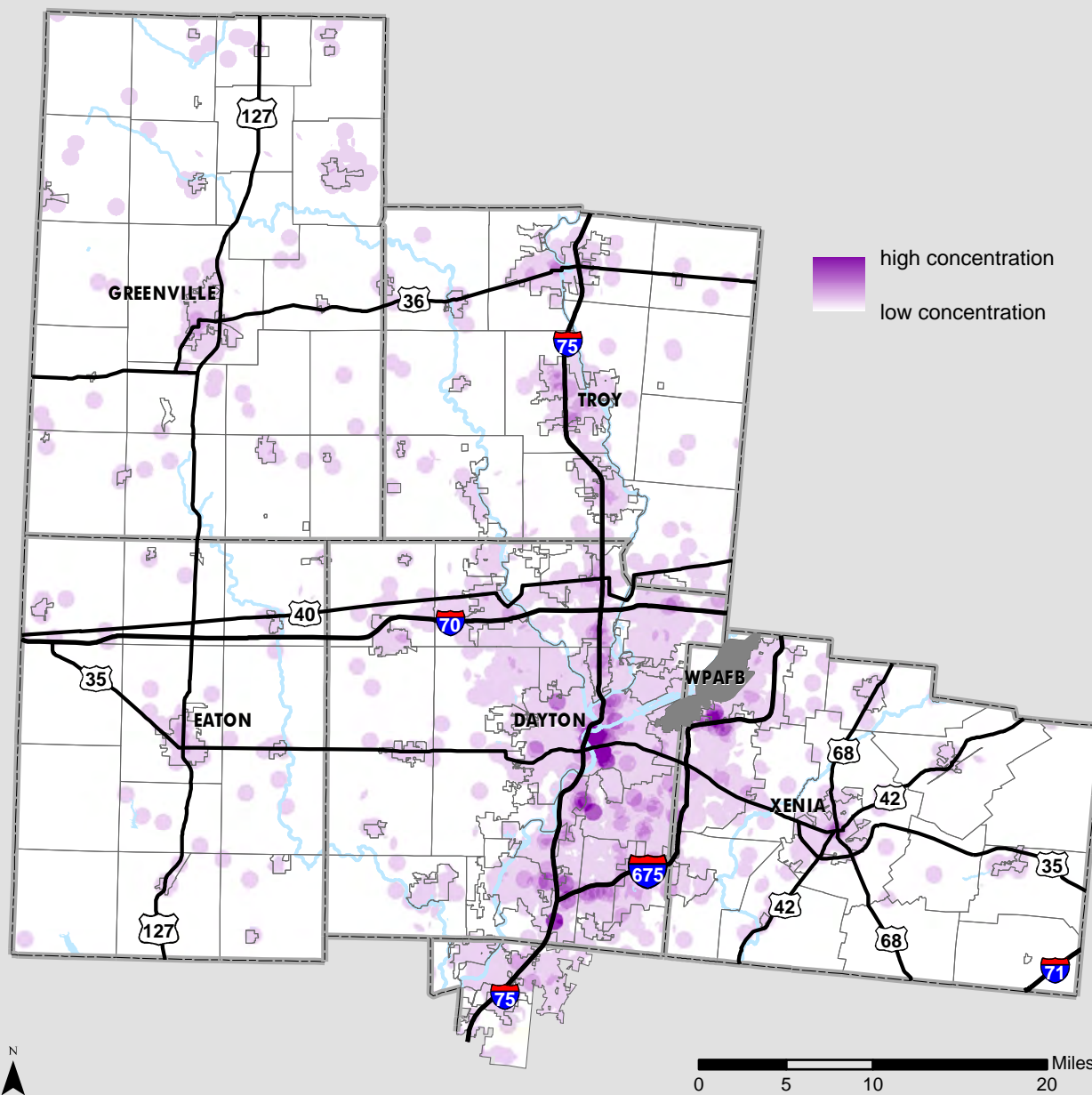


2011 Employment: Regional Profile

Employment Concentration: All Jobs



map created in September 2014

The Census Bureau, in partnership with other federal and state agencies, produces data on employment and where employees live. It is important to note that not all jobs are counted in this data, which derives from unemployment insurance records. Examples of jobs not counted in this data set include military in uniform, self-employed workers, informally employed people, and postal employees. The information presented in these maps is based on the workplace, not the worker's home. These maps are of all jobs, not just an employee's primary job.

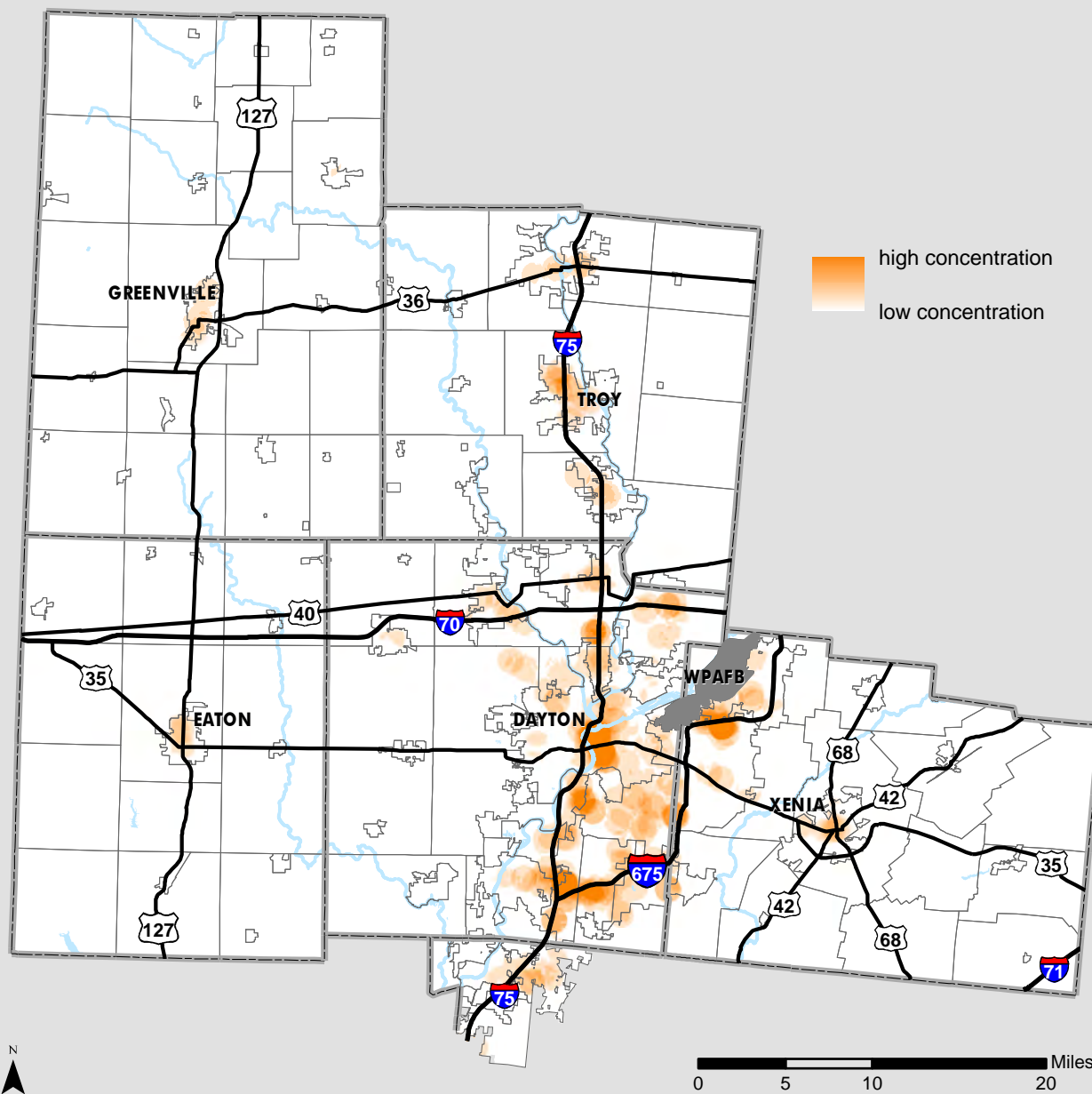
source: U.S. Census Bureau. Longitudinal Employer-Household Dynamics Origin-Destination Employment Statistics (LODES), 2011.
<http://lehd.ces.census.gov/>



One South Main Street, Suite 260 Dayton, Ohio 45402
Tel: 937-223-6323 Fax: 937-223-9750 Website: www.mvrpc.org

2011 Employment: Regional Profile

Employment Concentration: Workers Under Age 30



map created in September 2014

The Census Bureau, in partnership with other federal and state agencies, produces data on employment and where employees live. It is important to note that not all jobs are counted in this data, which derives from unemployment insurance records. Examples of jobs not counted in this data set include military in uniform, self-employed workers, informally employed people, and postal employees. The information presented in these maps is based on the workplace, not the worker's home. These maps are of all jobs, not just an employee's primary job.

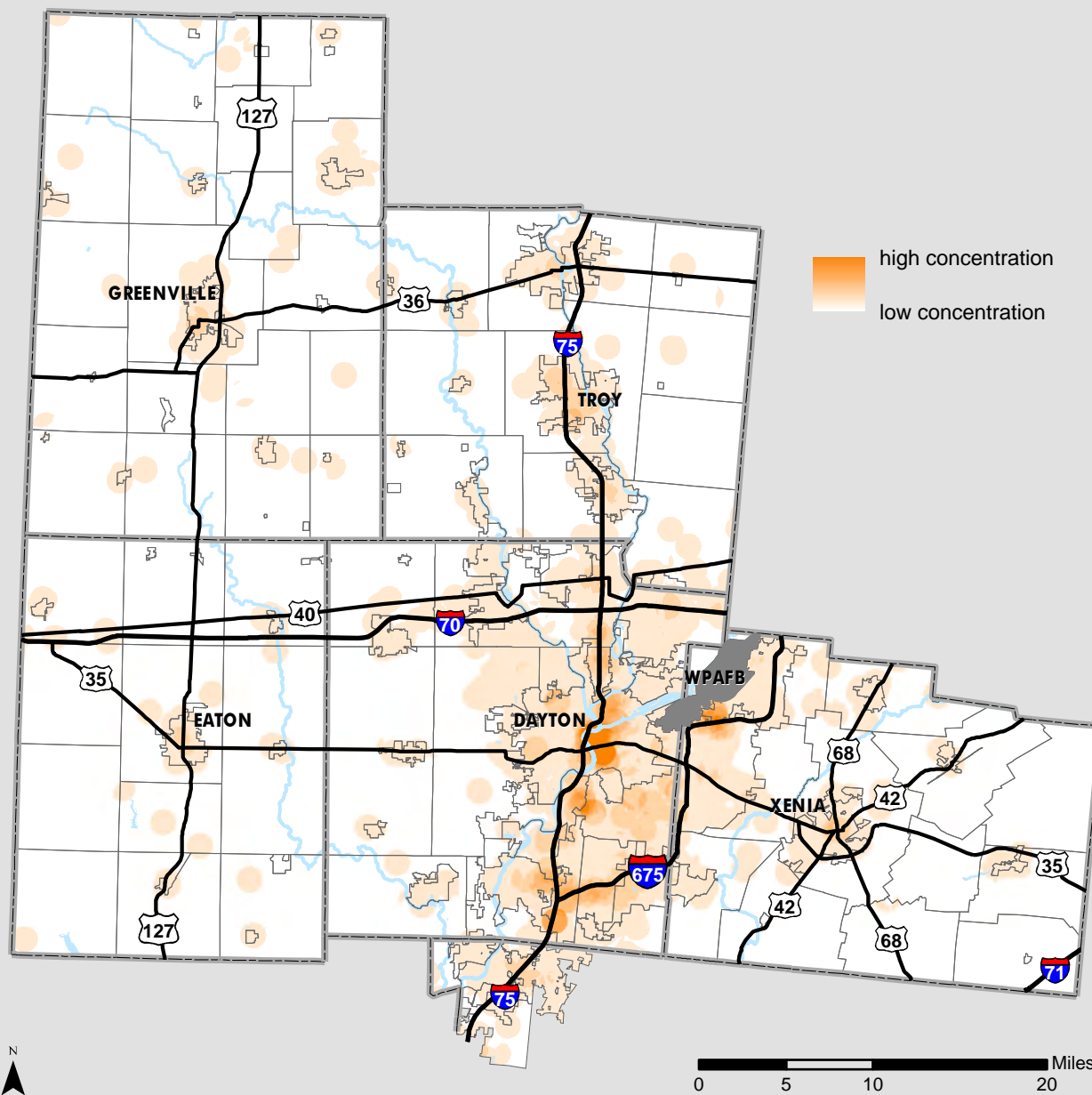
source: U.S. Census Bureau. Longitudinal Employer-Household Dynamics Origin-Destination Employment Statistics (LODES), 2011.
<http://lehd.ces.census.gov/>



One South Main Street, Suite 260 Dayton, Ohio 45402
Tel: 937-223-6323 Fax: 937-223-9750 Website: www.mvrpc.org

2011 Employment: Regional Profile

Employment Concentration: Workers Age 30 to 54



map created in September 2014

The Census Bureau, in partnership with other federal and state agencies, produces data on employment and where employees live. It is important to note that not all jobs are counted in this data, which derives from unemployment insurance records. Examples of jobs not counted in this data set include military in uniform, self-employed workers, informally employed people, and postal employees. The information presented in these maps is based on the workplace, not the worker's home. These maps are of all jobs, not just an employee's primary job.

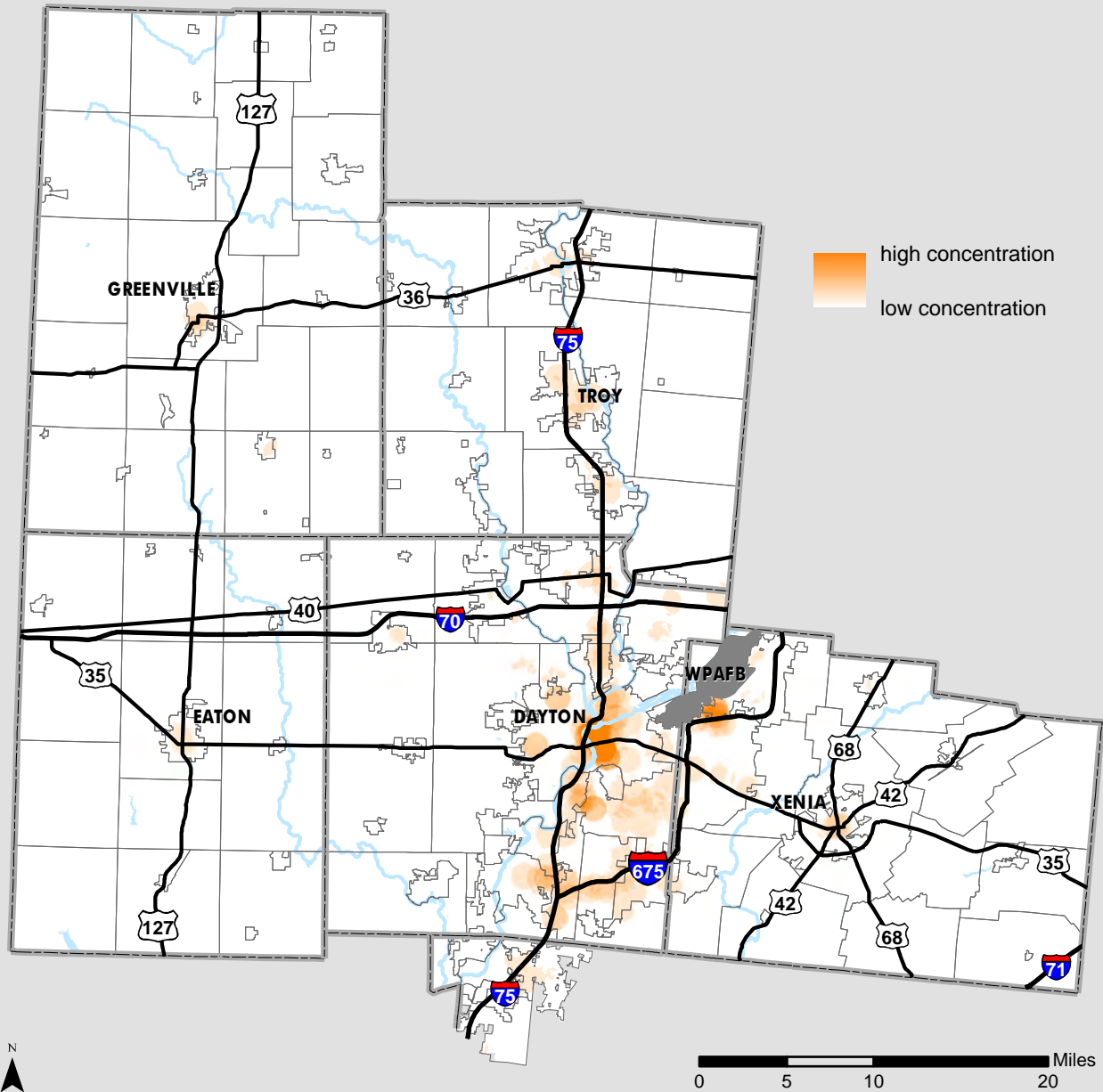
source: U.S. Census Bureau. Longitudinal Employer-Household Dynamics Origin-Destination Employment Statistics (LODES), 2011.
<http://lehd.ces.census.gov/>



One South Main Street, Suite 260 Dayton, Ohio 45402
Tel: 937-223-6323 Fax: 937-223-9750 Website: www.mvrpc.org

2011 Employment: Regional Profile

Employment Concentration: Workers Age 55 and Over



map created in September 2014

The Census Bureau, in partnership with other federal and state agencies, produces data on employment and where employees live. It is important to note that not all jobs are counted in this data, which derives from unemployment insurance records. Examples of jobs not counted in this data set include military in uniform, self-employed workers, informally employed people, and postal employees. The information presented in these maps is based on the workplace, not the worker's home. These maps are of all jobs, not just an employee's primary job.

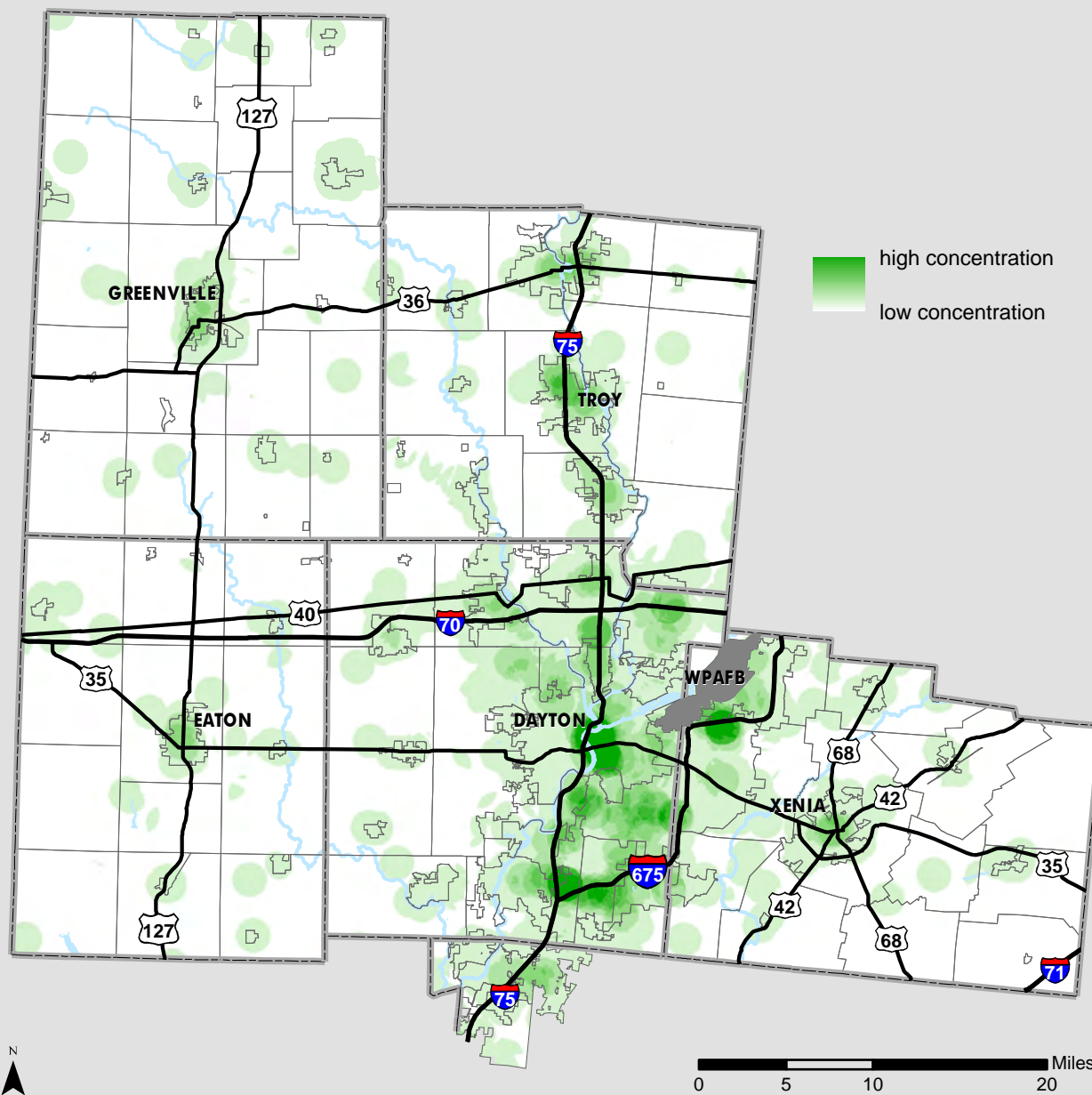
source: U.S. Census Bureau. Longitudinal Employer-Household Dynamics Origin-Destination Employment Statistics (LODES), 2011.
<http://lehd.ces.census.gov/>



One South Main Street, Suite 260 Dayton, Ohio 45402
Tel: 937-223-6323 Fax: 937-223-9750 Website: www.mvrpc.org

2011 Employment: Regional Profile

Employment Concentration: Workers with Monthly Earnings \$1,250 or less



map created in September 2014

The Census Bureau, in partnership with other federal and state agencies, produces data on employment and where employees live. It is important to note that not all jobs are counted in this data, which derives from unemployment insurance records. Examples of jobs not counted in this data set include military in uniform, self-employed workers, informally employed people, and postal employees. The information presented in these maps is based on the workplace, not the worker's home. These maps are of all jobs, not just an employee's primary job.

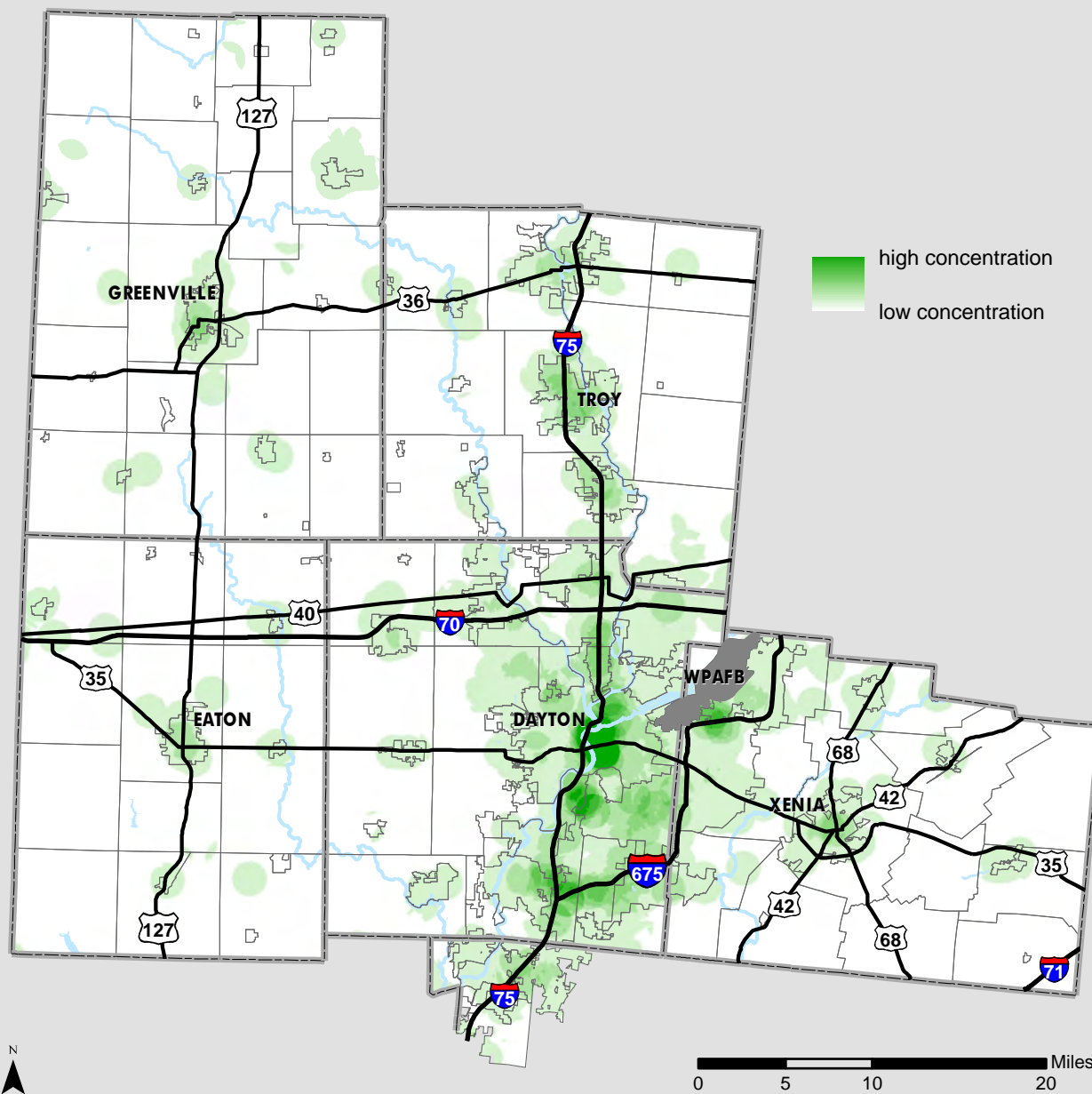
source: U.S. Census Bureau. Longitudinal Employer-Household Dynamics Origin-Destination Employment Statistics (LODES), 2011.
<http://lehd.ces.census.gov/>



One South Main Street, Suite 260 Dayton, Ohio 45402
 Tel: 937-223-6323 Fax: 937-223-9750 Website: www.mvrpc.org

2011 Employment: Regional Profile

Employment Concentration: Workers with Monthly Earnings from \$1,251 to \$3,333



map created in September 2014

The Census Bureau, in partnership with other federal and state agencies, produces data on employment and where employees live. It is important to note that not all jobs are counted in this data, which derives from unemployment insurance records. Examples of jobs not counted in this data set include military in uniform, self-employed workers, informally employed people, and postal employees. The information presented in these maps is based on the workplace, not the worker's home. These maps are of all jobs, not just an employee's primary job.

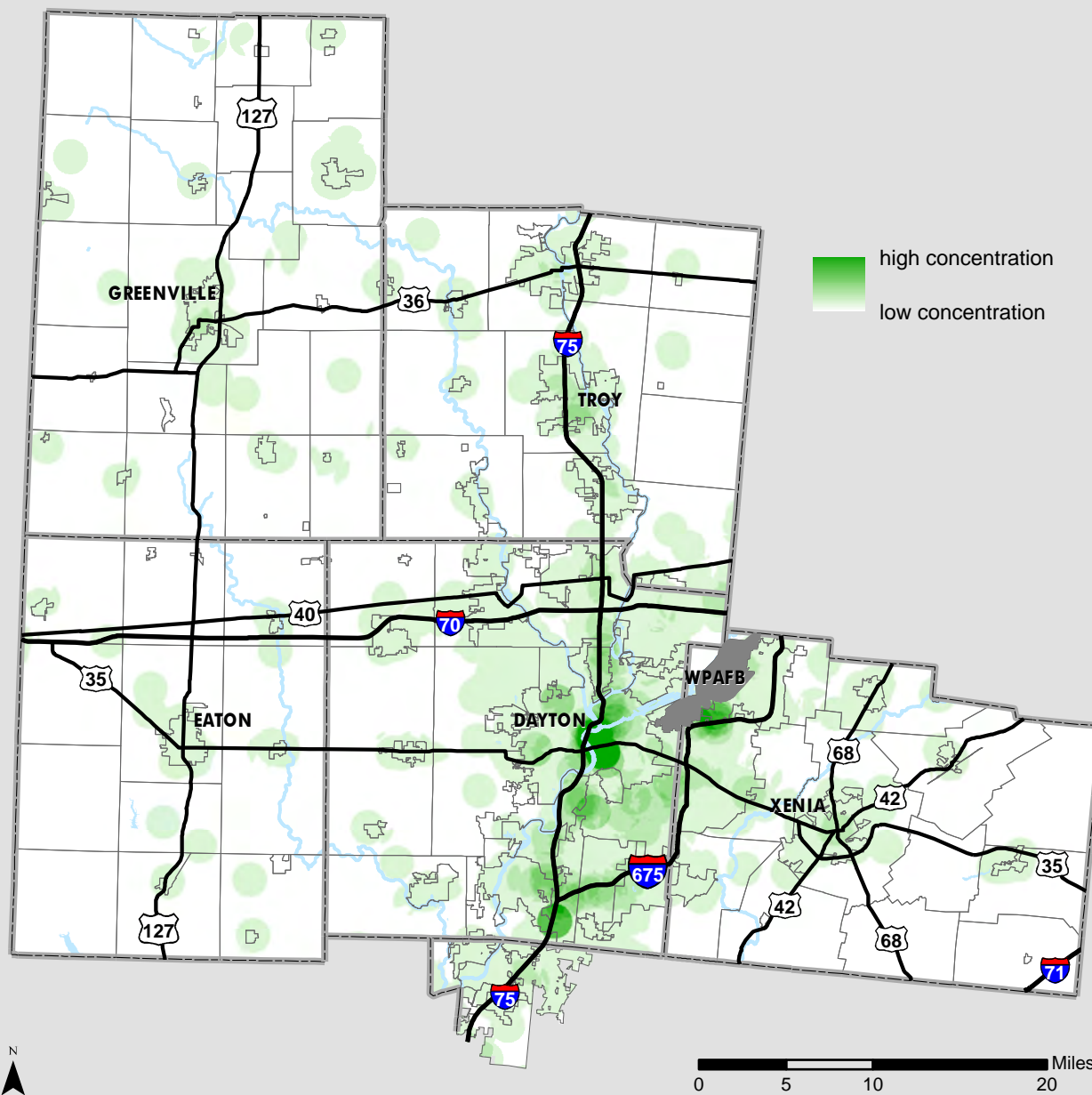
source: U.S. Census Bureau. Longitudinal Employer-Household Dynamics Origin-Destination Employment Statistics (LODES), 2011.
<http://lehd.ces.census.gov/>



One South Main Street, Suite 260 Dayton, Ohio 45402
Tel: 937-223-6323 Fax: 937-223-9750 Website: www.mvrpc.org

2011 Employment: Regional Profile

Employment Concentration: Workers with Monthly Earnings over \$3,333



map created in September 2014

The Census Bureau, in partnership with other federal and state agencies, produces data on employment and where employees live. It is important to note that not all jobs are counted in this data, which derives from unemployment insurance records. Examples of jobs not counted in this data set include military in uniform, self-employed workers, informally employed people, and postal employees. The information presented in these maps is based on the workplace, not the worker's home. These maps are of all jobs, not just an employee's primary job.

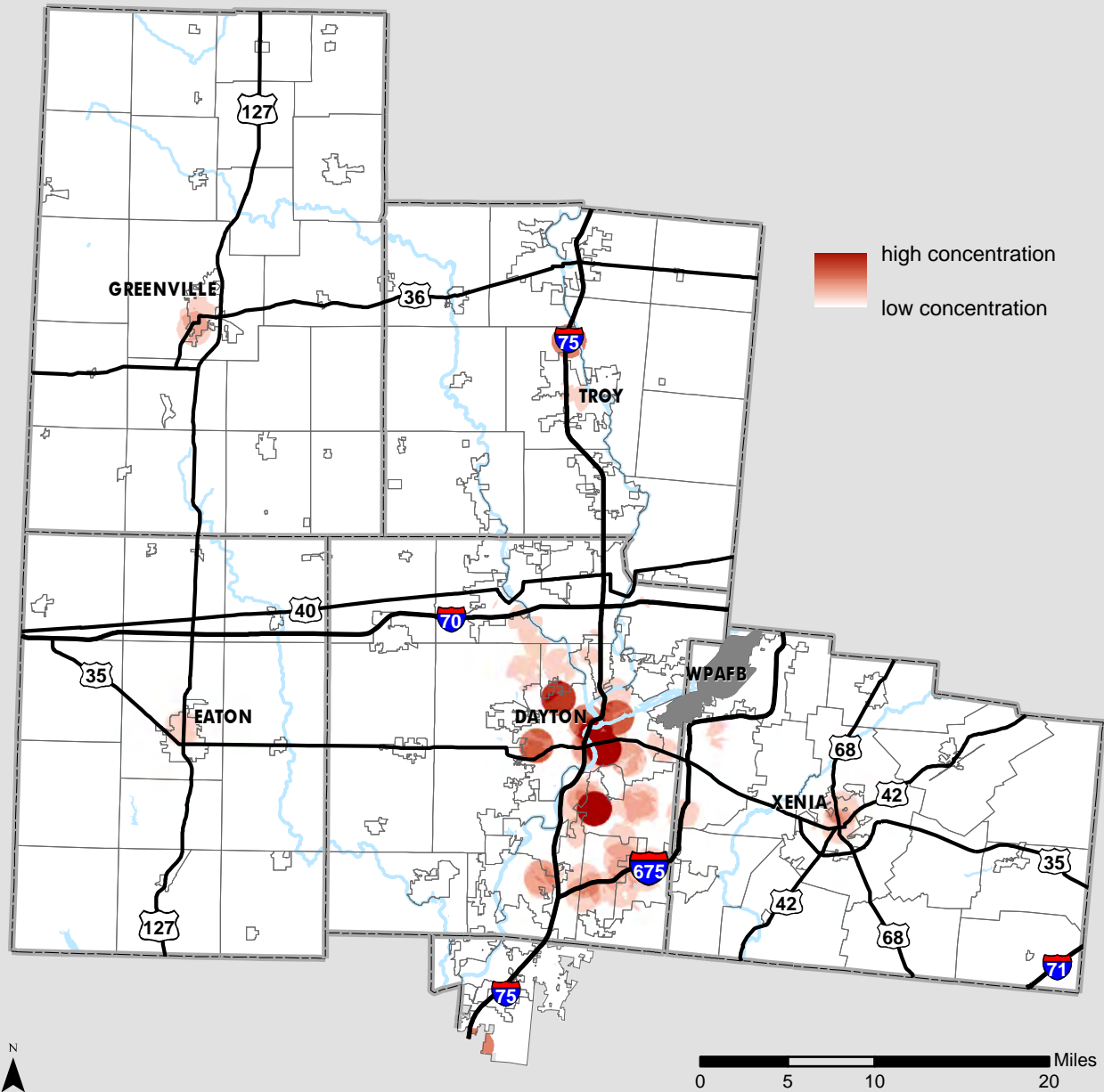
source: U.S. Census Bureau. Longitudinal Employer-Household Dynamics Origin-Destination Employment Statistics (LODES), 2011.
<http://lehd.ces.census.gov/>



One South Main Street, Suite 260 Dayton, Ohio 45402
Tel: 937-223-6323 Fax: 937-223-9750 Website: www.mvrpc.org

2011 Employment: Regional Profile

Employment Concentration: Workers in Health Care and Social Assistance (NAICS sector 62)



map created in September 2014

The Census Bureau, in partnership with other federal and state agencies, produces data on employment and where employees live. It is important to note that not all jobs are counted in this data, which derives from unemployment insurance records. Examples of jobs not counted in this data set include military in uniform, self-employed workers, informally employed people, and postal employees. The information presented in these maps is based on the workplace, not the worker's home. These maps are of all jobs, not just an employee's primary job.

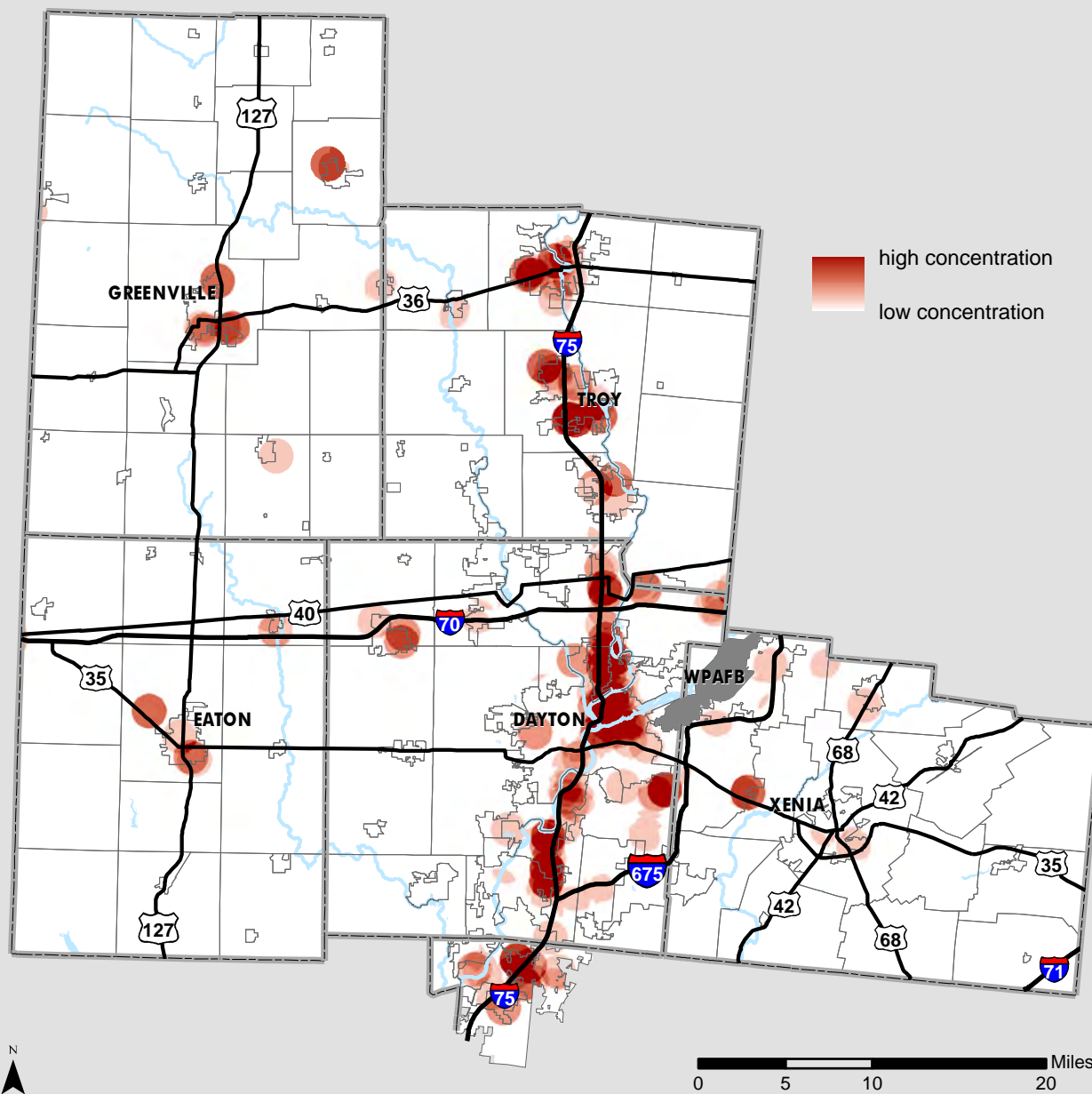
source: U.S. Census Bureau. Longitudinal Employer-Household Dynamics Origin-Destination Employment Statistics (LODES), 2011.
<http://lehd.ces.census.gov/>



One South Main Street, Suite 260 Dayton, Ohio 45402
Tel: 937-223-6323 Fax: 937-223-9750 Website: www.mvrpc.org

2011 Employment: Regional Profile

Employment Concentration: Workers in Manufacturing (NAICS sector 31-33)



map created in September 2014

The Census Bureau, in partnership with other federal and state agencies, produces data on employment and where employees live. It is important to note that not all jobs are counted in this data, which derives from unemployment insurance records. Examples of jobs not counted in this data set include military in uniform, self-employed workers, informally employed people, and postal employees. The information presented in these maps is based on the workplace, not the worker's home. These maps are of all jobs, not just an employee's primary job.

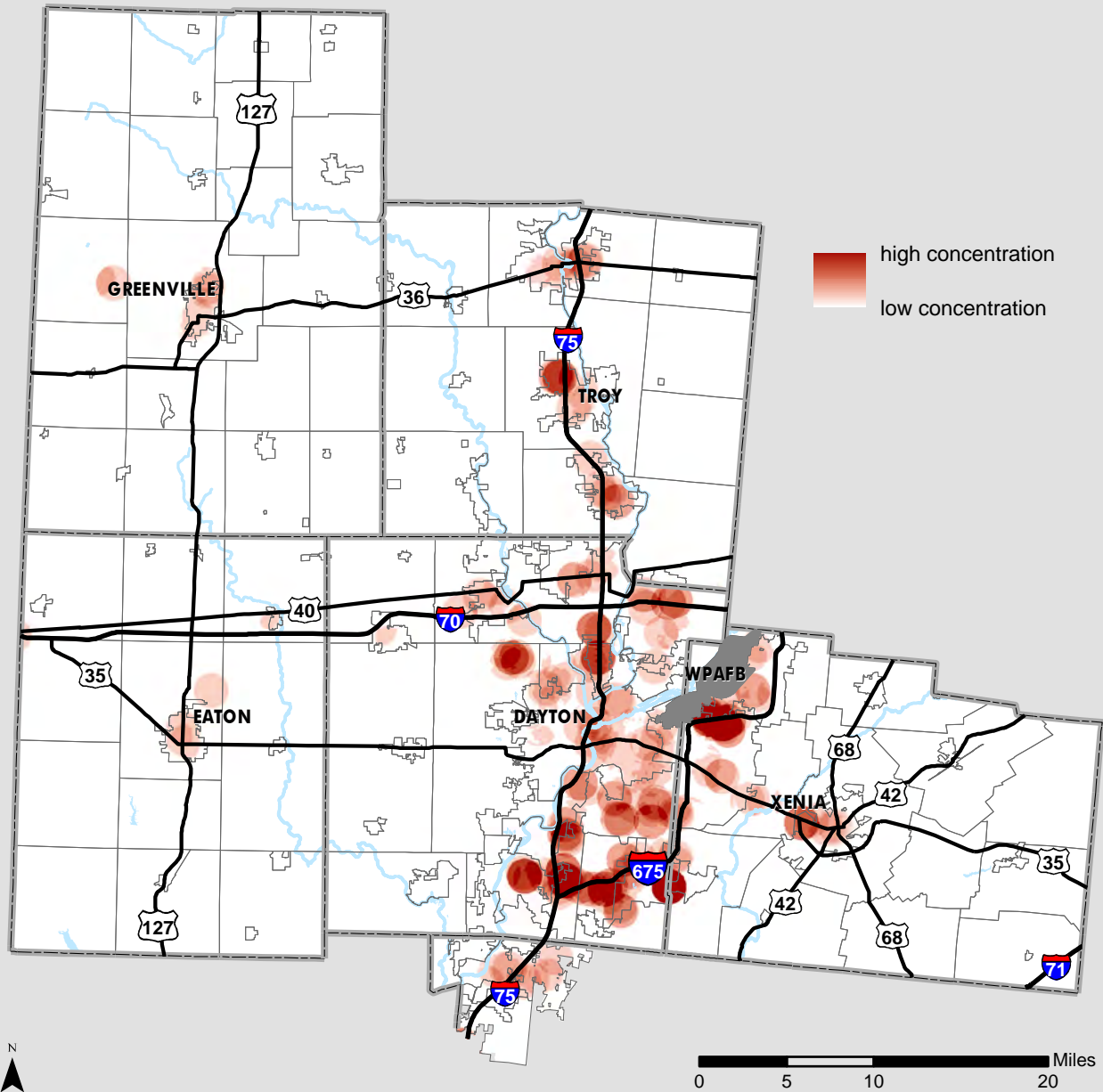
source: U.S. Census Bureau. Longitudinal Employer-Household Dynamics Origin-Destination Employment Statistics (LODES), 2011.
<http://lehd.ces.census.gov/>



One South Main Street, Suite 260 Dayton, Ohio 45402
Tel: 937-223-6323 Fax: 937-223-9750 Website: www.mvrpc.org

2011 Employment: Regional Profile

Employment Concentration: Workers in Retail Trade (NAICS sector 44-45)



map created in September 2014

The Census Bureau, in partnership with other federal and state agencies, produces data on employment and where employees live. It is important to note that not all jobs are counted in this data, which derives from unemployment insurance records. Examples of jobs not counted in this data set include military in uniform, self-employed workers, informally employed people, and postal employees. The information presented in these maps is based on the workplace, not the worker's home. These maps are of all jobs, not just an employee's primary job.

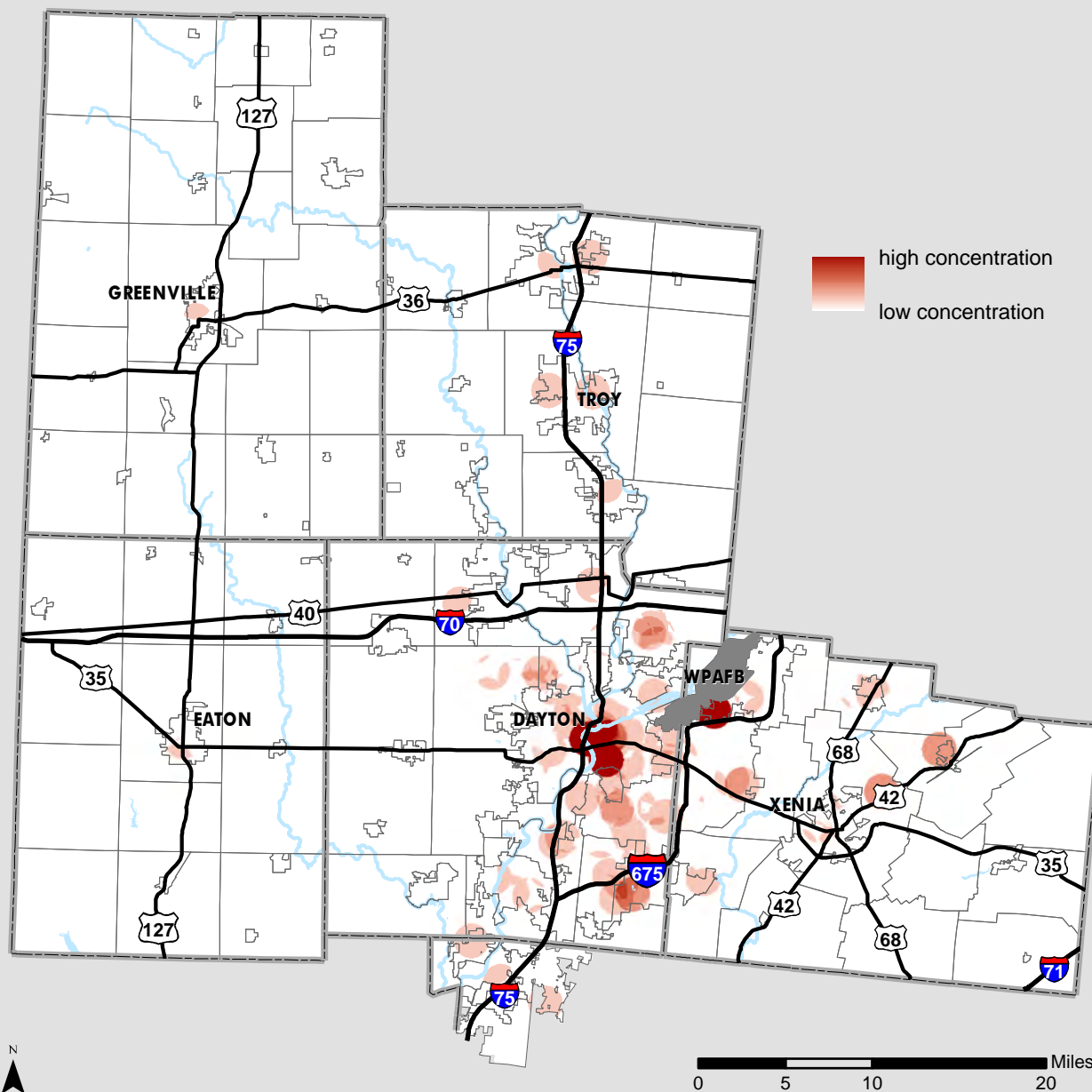
source: U.S. Census Bureau. Longitudinal Employer-Household Dynamics Origin-Destination Employment Statistics (LODES), 2011.
<http://lehd.ces.census.gov/>



One South Main Street, Suite 260 Dayton, Ohio 45402
Tel: 937-223-6323 Fax: 937-223-9750 Website: www.mvrpc.org

2011 Employment: Regional Profile

Employment Concentration: Workers in Educational Services (NAICS sector 61)



map created in September 2014

The Census Bureau, in partnership with other federal and state agencies, produces data on employment and where employees live. It is important to note that not all jobs are counted in this data, which derives from unemployment insurance records. Examples of jobs not counted in this data set include military in uniform, self-employed workers, informally employed people, and postal employees. The information presented in these maps is based on the workplace, not the worker's home. These maps are of all jobs, not just an employee's primary job.

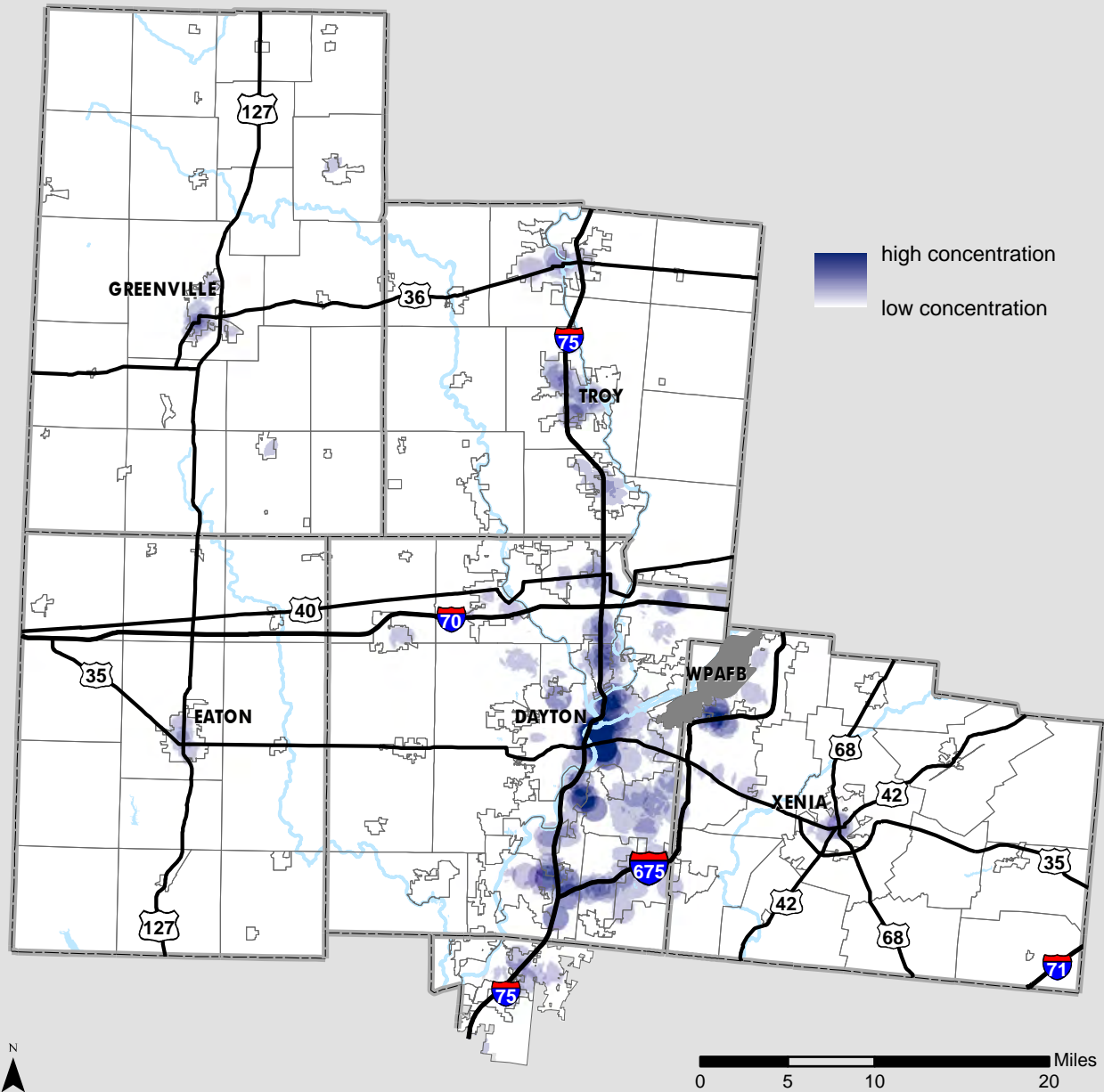
source: U.S. Census Bureau. Longitudinal Employer-Household Dynamics Origin-Destination Employment Statistics (LODES), 2011.
<http://lehd.ces.census.gov/>



One South Main Street, Suite 260 Dayton, Ohio 45402
Tel: 937-223-6323 Fax: 937-223-9750 Website: www.mvrpc.org

2011 Employment: Regional Profile

Employment Concentration: Workers with a High School Diploma



map created in September 2014

The Census Bureau, in partnership with other federal and state agencies, produces data on employment and where employees live. It is important to note that not all jobs are counted in this data, which derives from unemployment insurance records. Examples of jobs not counted in this data set include military in uniform, self-employed workers, informally employed people, and postal employees. The information presented in these maps is based on the workplace, not the worker's home. These maps are of all jobs, not just an employee's primary job.

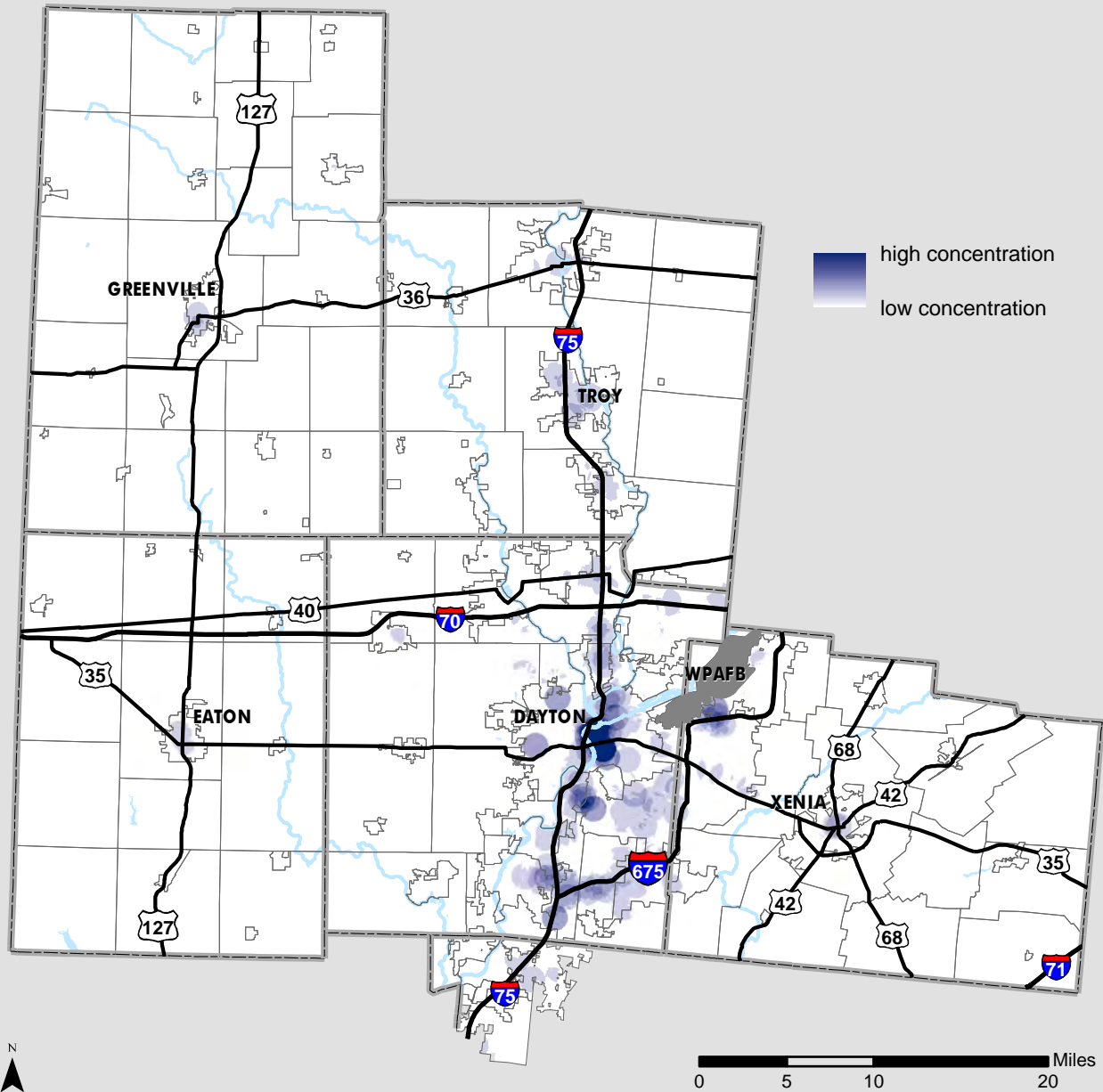
source: U.S. Census Bureau. Longitudinal Employer-Household Dynamics Origin-Destination Employment Statistics (LODES), 2011.
<http://lehd.ces.census.gov/>



One South Main Street, Suite 260 Dayton, Ohio 45402
Tel: 937-223-6323 Fax: 937-223-9750 Website: www.mvrpc.org

2011 Employment: Regional Profile

Employment Concentration: Workers with Some College



map created in September 2014

The Census Bureau, in partnership with other federal and state agencies, produces data on employment and where employees live. It is important to note that not all jobs are counted in this data, which derives from unemployment insurance records. Examples of jobs not counted in this data set include military in uniform, self-employed workers, informally employed people, and postal employees. The information presented in these maps is based on the workplace, not the worker's home. These maps are of all jobs, not just an employee's primary job.

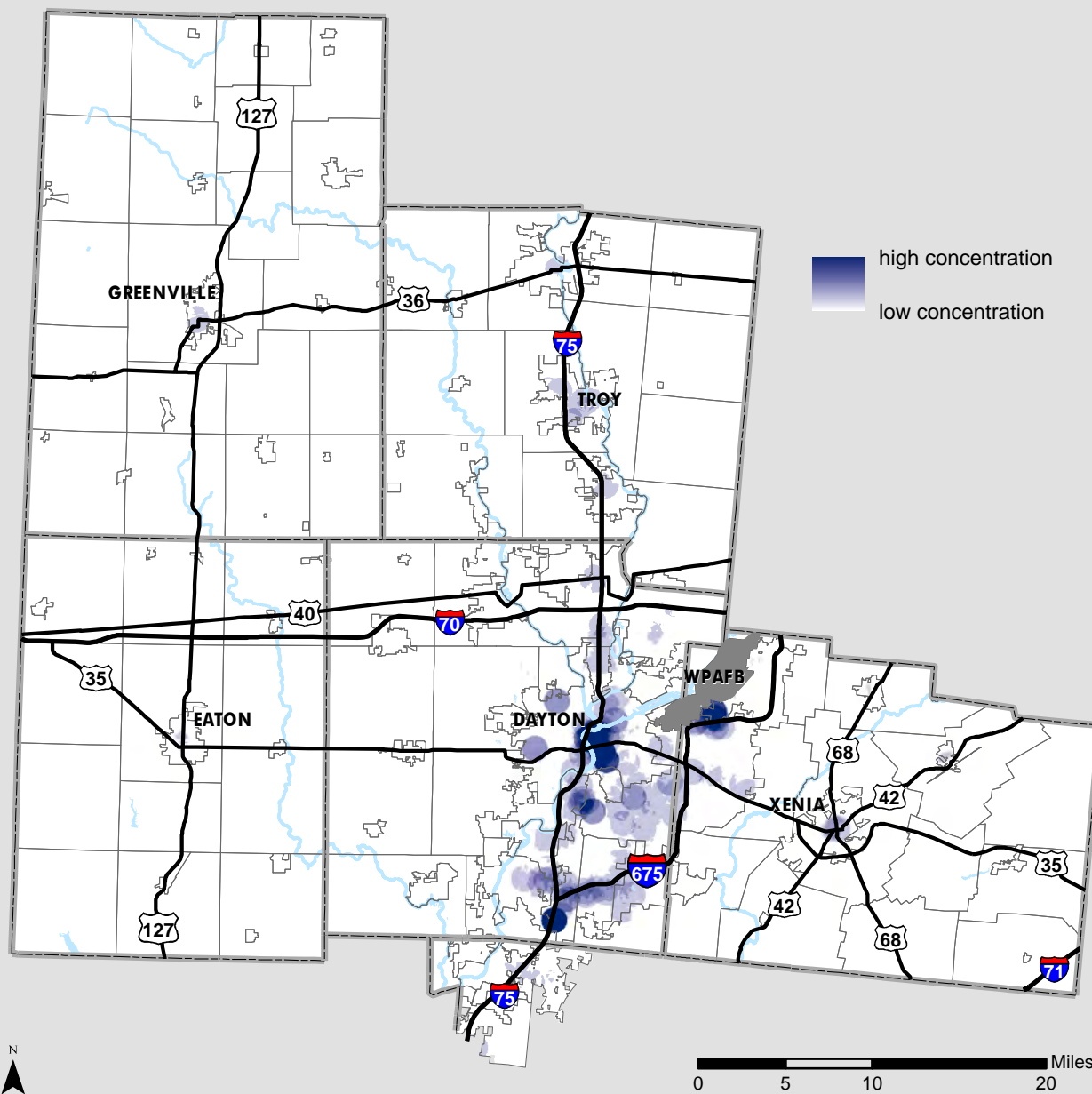
source: U.S. Census Bureau. Longitudinal Employer-Household Dynamics Origin-Destination Employment Statistics (LODES), 2011.
<http://lehd.ces.census.gov/>



One South Main Street, Suite 260 Dayton, Ohio 45402
Tel: 937-223-6323 Fax: 937-223-9750 Website: www.mvrpc.org

2011 Employment: Regional Profile

Employment Concentration: Workers with a Bachelor's Degree or Advanced Degree



map created in September 2014

The Census Bureau, in partnership with other federal and state agencies, produces data on employment and where employees live. It is important to note that not all jobs are counted in this data, which derives from unemployment insurance records. Examples of jobs not counted in this data set include military in uniform, self-employed workers, informally employed people, and postal employees. The information presented in these maps is based on the workplace, not the worker's home. These maps are of all jobs, not just an employee's primary job.

source: U.S. Census Bureau. Longitudinal Employer-Household Dynamics Origin-Destination Employment Statistics (LODES), 2011.
<http://lehd.ces.census.gov/>



One South Main Street, Suite 260 Dayton, Ohio 45402
Tel: 937-223-6323 Fax: 937-223-9750 Website: www.mvrpc.org