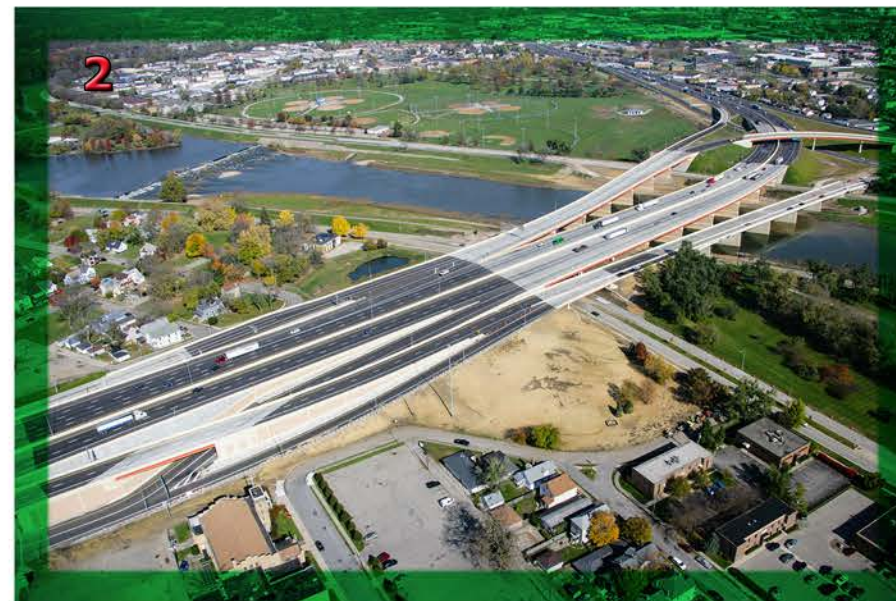
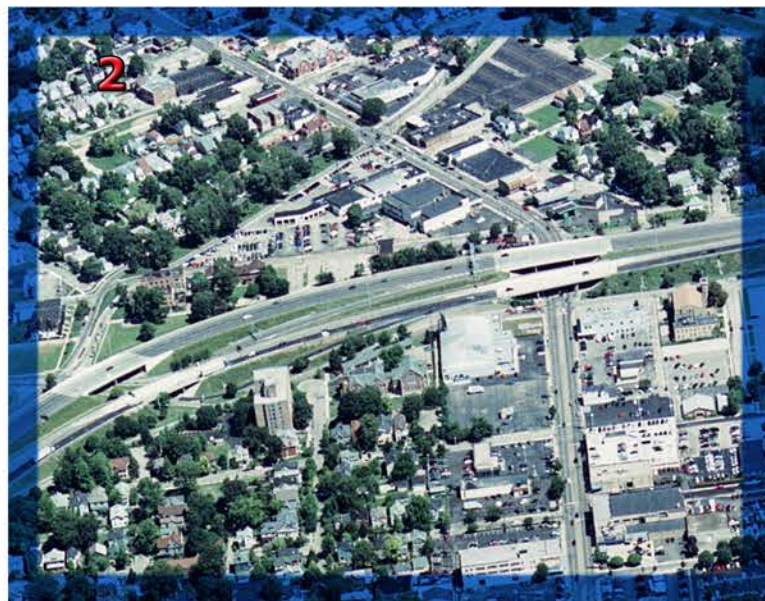
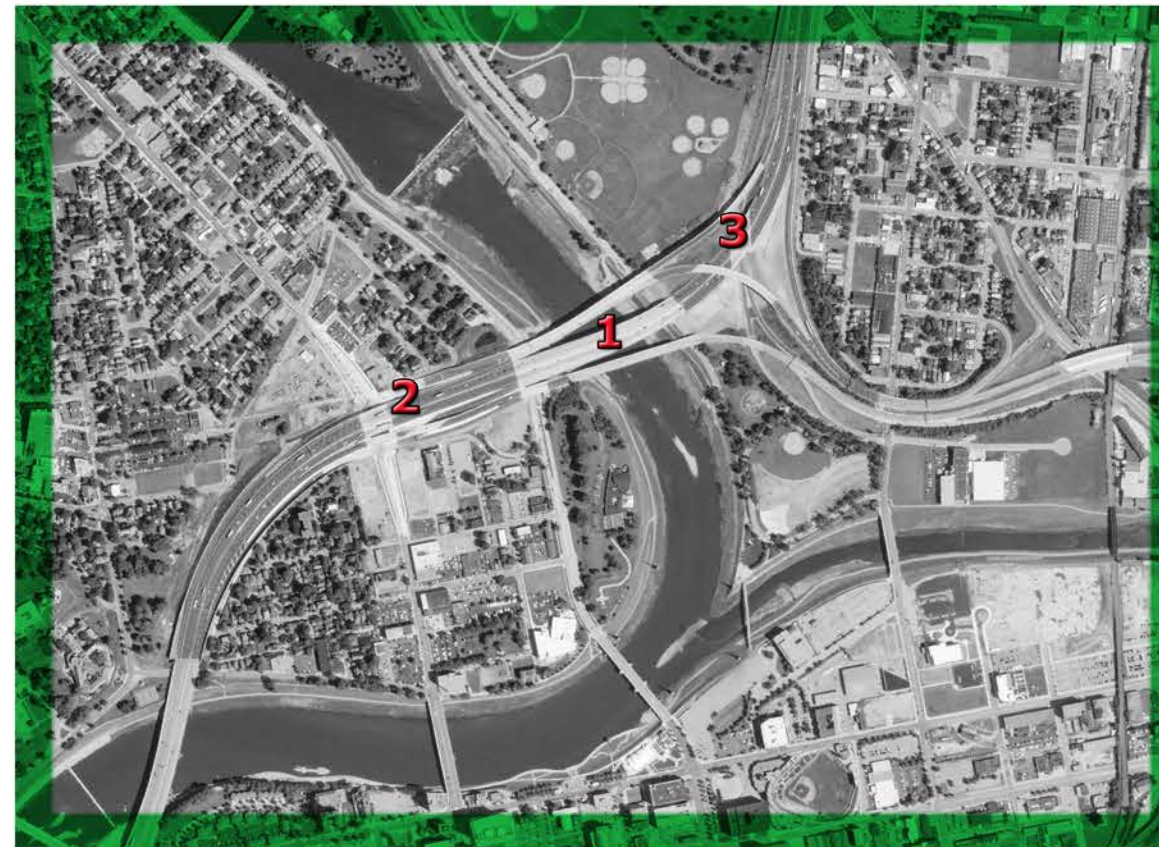
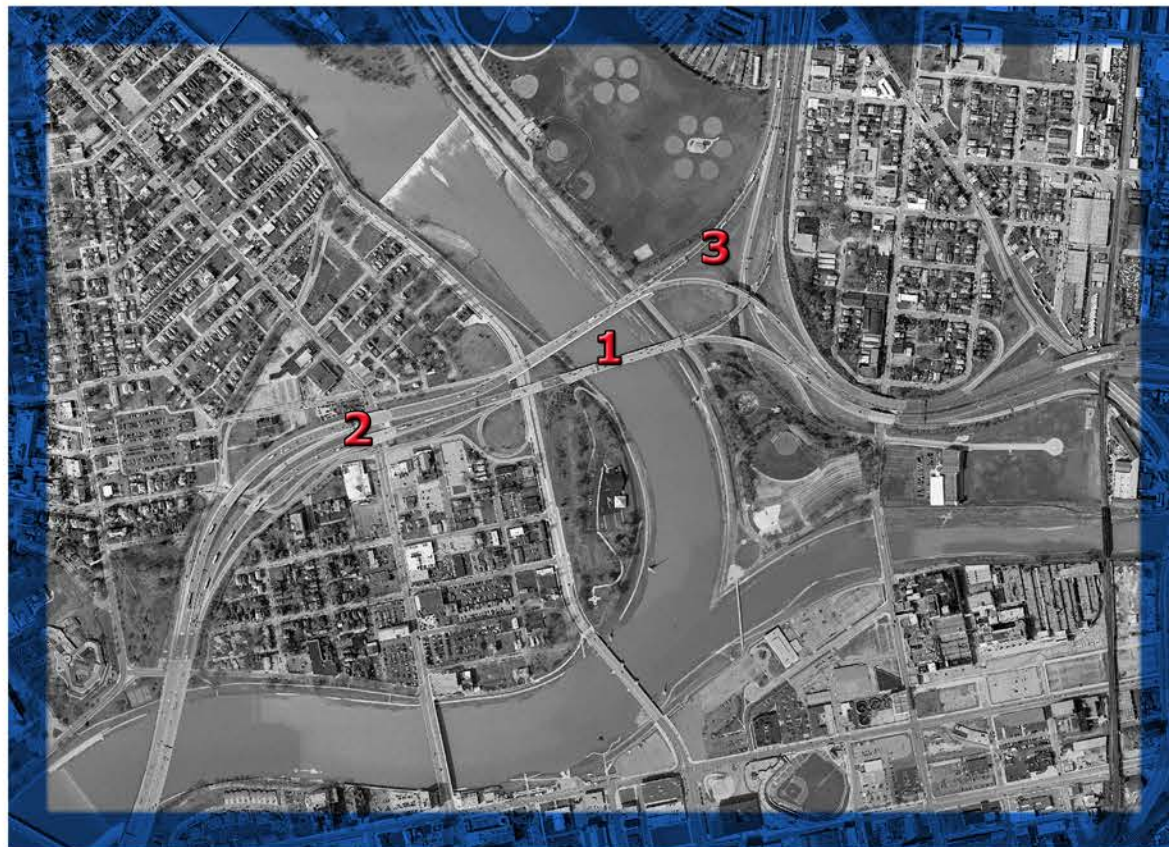


# I - 75 Downtown Reconstruction Phase 1-A

Before & After

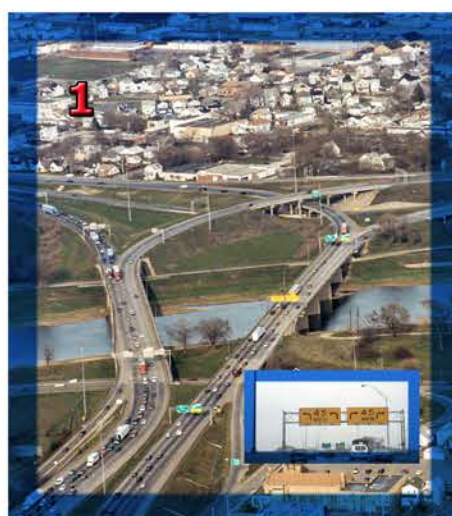
Source: ODOT, Montgomery County and NAIP

Aerial photos of I-75 before and after completion of Phase 1-A



Northbound View  
Reconfigured mainline with braided ramp

- Southbound View
- Merging problems
  - Left Entrances & Exits
  - New braided ramp eliminates weaving
  - Right Entrances & Exits
  - Consolidated Access



- 45mph curve slows down traffic
- Improved to a softer curve (60 mph)

- Before and after photos of completely redesigned I-75/SR4 interchange
- Aesthetic Treatments

