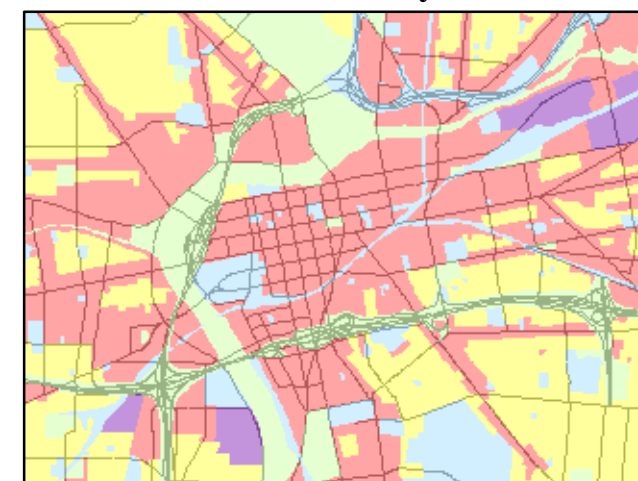




Miami Valley
Regional Planning Commission
Dayton, Ohio USA
www.mvrpc.org

Montgomery and Warren Counties Generalized Land Use/ Land Cover in 2000

Downtown Dayton

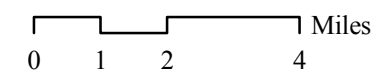


Land Use

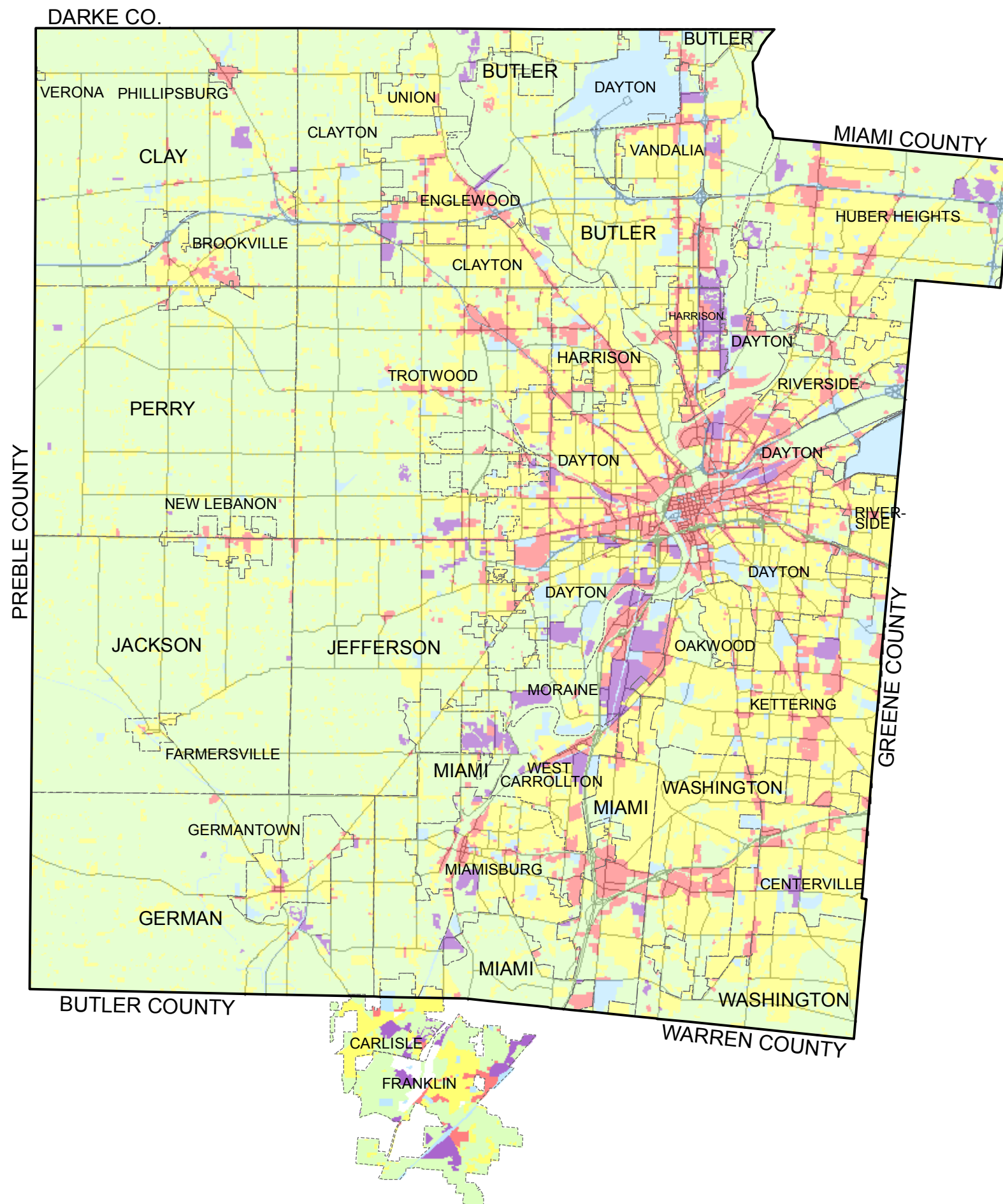
- Residential
- Agriculture; Open Space
- Industrial
- Commercial
- Public Institution

Source: Land Use/Land Cover Maps by the Ohio Department of Natural Resources and Montgomery County 2000 and Warren County 2000 Orthophotographies

Generalized Land Use/Land Cover map illustrates how land is occupied or utilized at a given point of time. The map provides a snapshot of various land uses in a spatial context.



Date: March 2005



Land Use