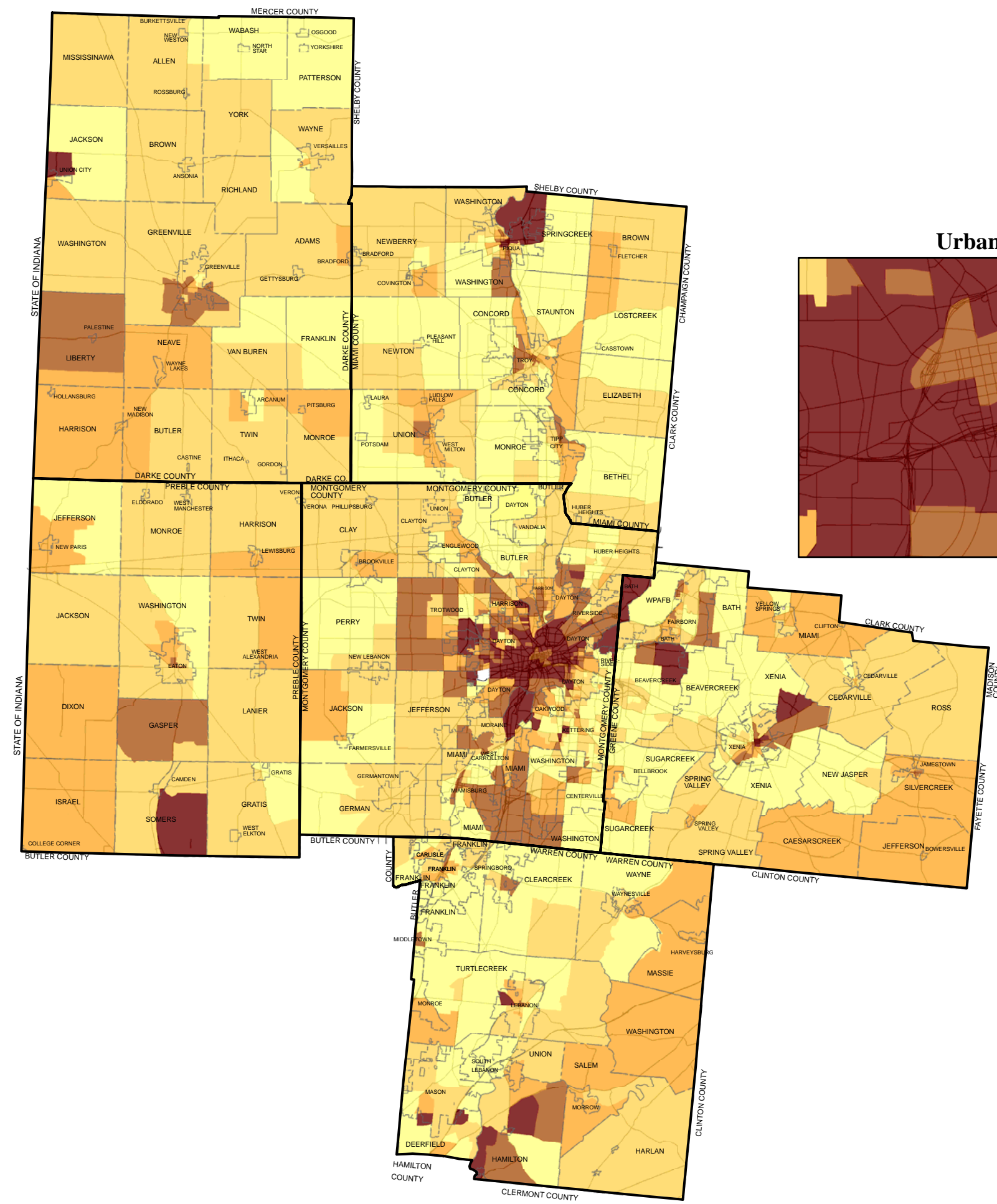


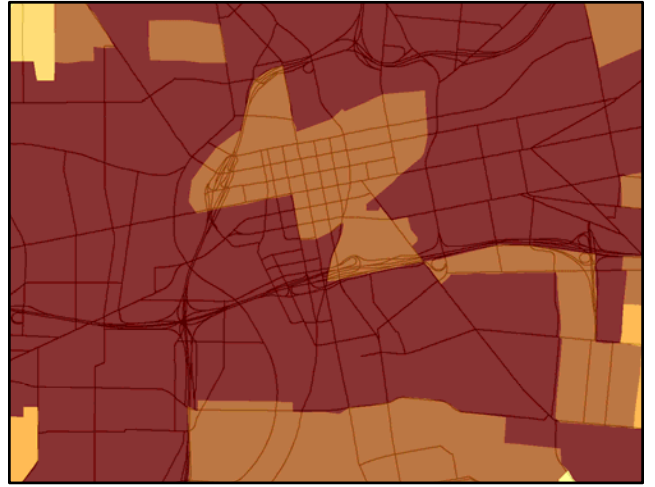


Miami Valley
Regional Planning Commission
Dayton, Ohio USA
www.mvrpc.org







Housing Vacancy Rate In 2000



Urban Core



Vacancy Rate By Block Group

-  Low (0.0% - 3.0%)
-  Medium Low (3.1% - 5.0%)
-  Medium (5.1% - 7.0%)
-  Medium High (7.1% - 11.0%)
-  High (11.1% - 40.0%)
-  Zero Housing Units

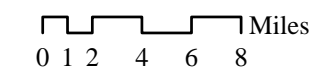
Vacancy Rate in a block group is the percentage of total vacant housing units out of the total housing units in that block group.

A housing unit is vacant if no one is living in it at the time of enumeration, unless its occupants are only temporarily absent. Units temporarily occupied at the time of enumeration entirely by people who have a usual residency elsewhere are also classified as vacant.

Housing Vacancy Rate By County

Darke County	5.4%
Greene County	5.0%
Miami County	5.2%
Montgomery County	7.7%
Preble County	6.9%
Warren County	4.6%

Source: U.S. Census 2000



Date: March 2005

Census

