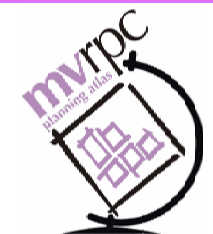
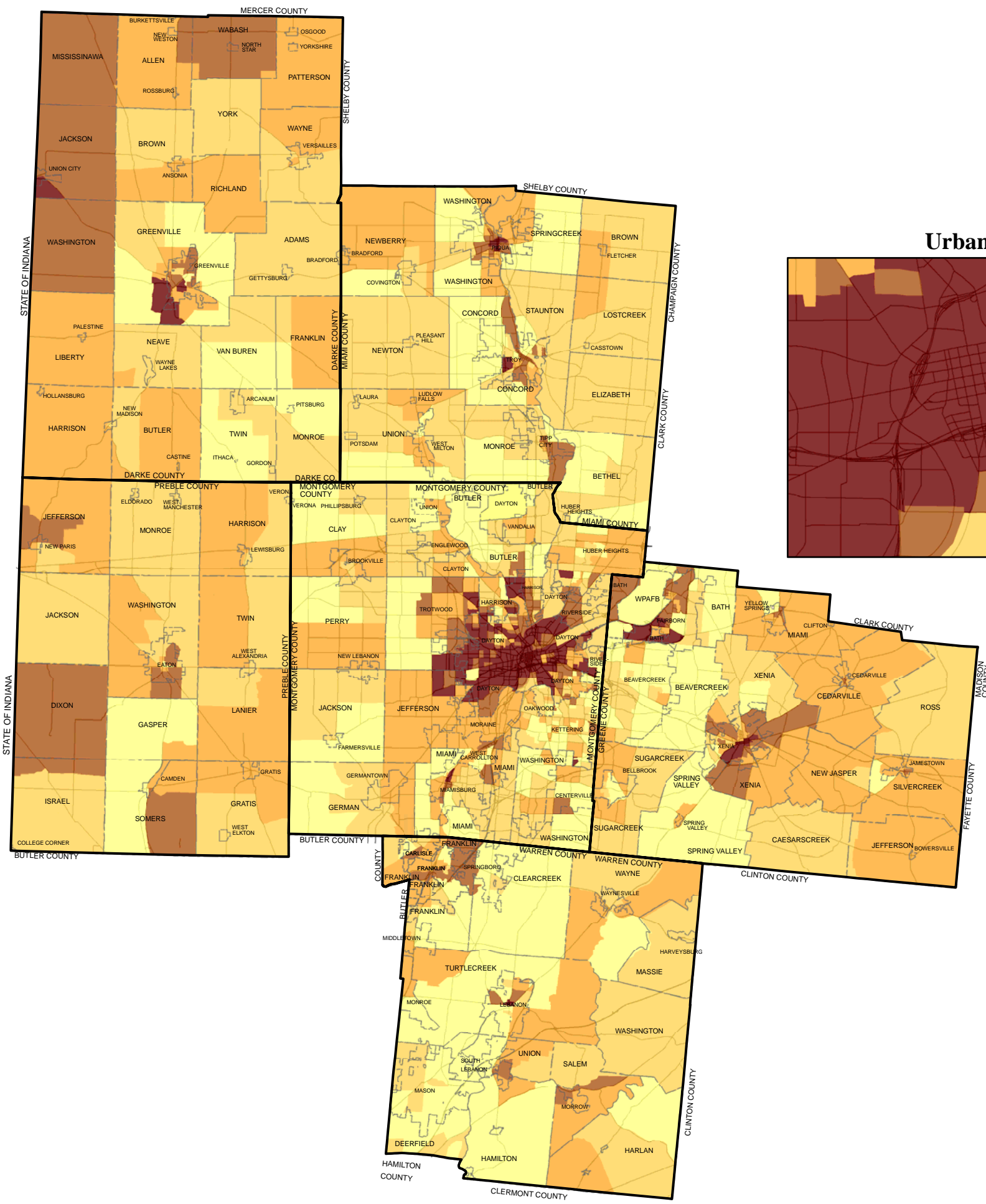


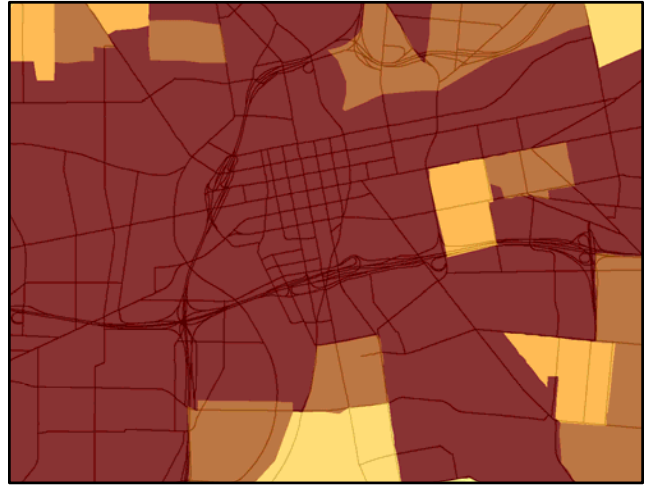
Population Below Poverty Level In 1999









Miami Valley
Regional Planning Commission
Dayton, Ohio USA
www.mvrpc.org



Urban Core



Percent of Population Below Poverty Level by Block Group

-  Low (0.0% - 2.0%)
-  Medium Low (3.0% - 5.0%)
-  Medium (6.0% - 10.0%)
-  Medium High (11.0% - 19.0%)
-  High (20.0% - 77.0%)
-  Zero Total Population

Poverty status is determined by the US Census Bureau for all people except institutionalized people, people in military group quarters, people in college dormitories, and unrelated individuals under 15 years old.

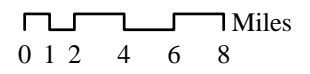
The poverty status of individuals in 1999 was determined using 48 thresholds (income cutoffs) determined by family size cross-classified by presence and number of family members under 18 years old.

If the total income of a person's family is less than the threshold appropriate for that family, then the person is considered poor, together with every member of his or her family.

Percentage of Population Below Poverty Level By County

Darke County	8.0
Greene County	8.5%
Miami County	6.7%
Montgomery County	11.3%
Preble County	6.1%
Warren County	4.2%

Source: U.S. Census 2000



Date: March 2005

Census

