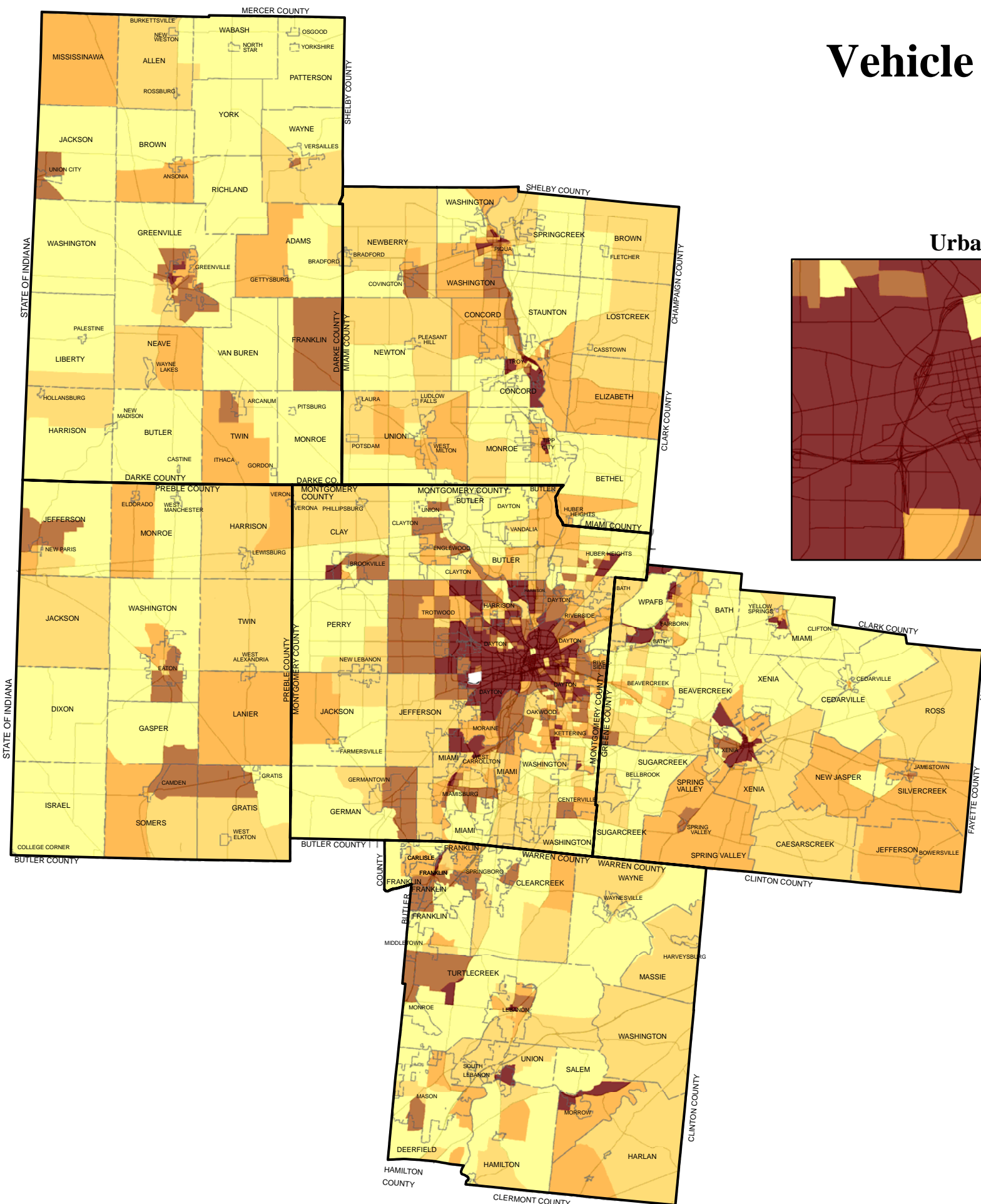


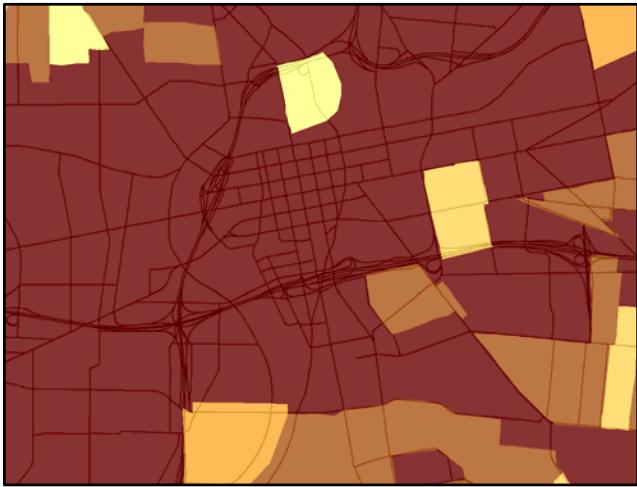
Vehicle Ownership In Occupied Housing Units In 2000



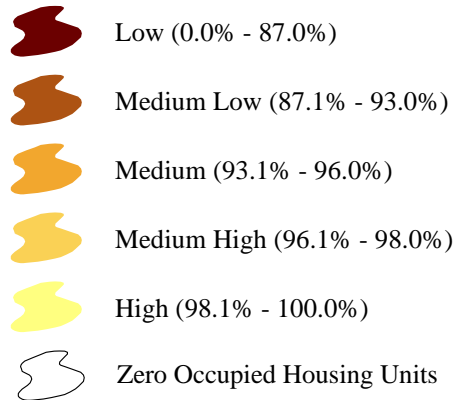
Miami Valley
Regional Planning Commission
Dayton, Ohio USA
www.mvrpc.org



Urban Core



Percent of Occupied Housing Units With Vehicles by Block Group

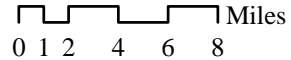


This map shows the percentage of occupied housing units in each block group in the region with at least one vehicle available for use by household members. "Vehicle available" refers to passenger cars, vans, and pickup or panel trucks of 1-ton capacity or less kept at home and available for use of household members.

Percent of Occupied Housing Units With At Least One Vehicle For Use By County

Darke County	95.2%
Greene County	94.8%
Miami County	95.0%
Montgomery County	90.2%
Preble County	95.5%
Warren County	96.4%

Source: U.S. Census 2000



Date: March 2005

Census

